

Information for Upgrading your Main Fuse

More information is on our website [here](#)



Why are you receiving this information?

If you need to upgrade your main electrical fuse to 80 or 100 amps, we can help you. Before we can upgrade your fuse safely, your equipment needs to meet certain safety and technical standards. This will vary depending on if you need an 80 or a 100 amp fuse.

Please read this information guide to see what you need to do before we can safely carry out the work.

When we upgrade your main fuse, we will need to turn the power off in the property briefly, the duration of this will depend on the scale of the works.

Looped Supplies – In some situations it may be that your power is linked to your neighbour, in these instances we may need to contact them. If you are aware that you have a looped supply, please let us know. Our engineers will attend and try to carry out the work on the first visit. There are some occasions where this is not possible, for example if you have a metal case around your main fuse. If further visits are necessary we'll let you know.

Need 80 amps?

Before we visit:

Step 1: Contact your electrician

We recommend contacting your electrician or installation company, to confirm whether 80 amps is sufficient. If sufficient you don't need to upgrade your tails and you can proceed to step 2.

Most homes with smaller fuses will have 16mm² tails, these can support up to 80 amps. The tail size refers to the cross-sectional area of the core of the cable, unless it is written on the cable it can be difficult to confirm the size just by looking.

Step 2: UK Power Networks visit

Our engineers will attend and try to carry out the work on the first visit. There are some occasions where this is not possible, if this is the case we'll let you know if further visits are necessary.

Need 100 amps?

Before we visit:

Step 1: Contact your electrician

If you need 100 amps, your electrician will need to check and change any internal equipment, isolation switches and consumer tails that do not support 100 amps, they may charge for this work. To support 100 amps, you will need the consumer tails changed to 25mm².

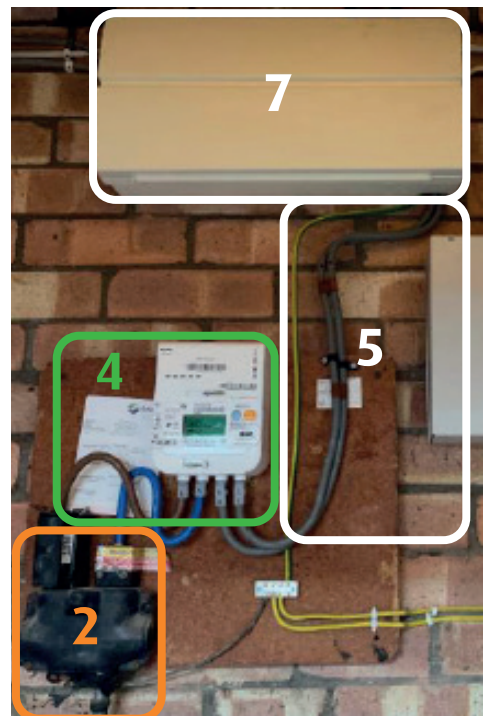
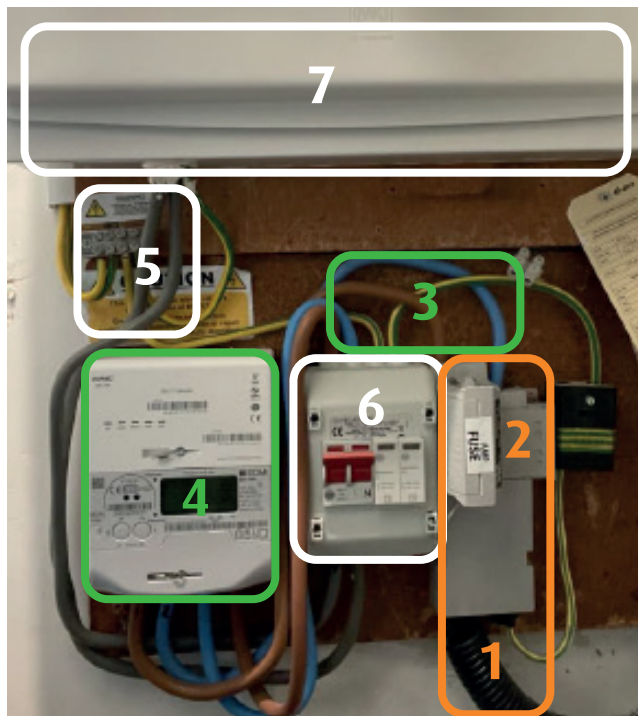
Step 2: Contact your energy supplier

They will need to check and change any electricity meters, time switches and tails that do not support 100 amps. They may charge for this work.

Step 3: UK Power Networks visit

Our engineers will attend and try to carry out the work on the first visit. There are some occasions where this is not possible, if this is the case we'll let you know if further visits are necessary.

Equipment Examples:



UK Power Networks Equipment

- 1 Service Cable
- 2 Cut Out

Supplier Equipment

- 3 Meter Tails
- 4 Meter

Electrician Equipment

- 5 Consumer Tails
- 6 Isolation Switch*
- 7 Consumer Unit

*The isolation switch (6) can involve the supplier as well as the electrician.

