

Pipeline snapshot

October – December 2022

The National Infrastructure Pipeline

The [National Infrastructure Pipeline](#) (Pipeline) is an online tool that helps to coordinate projects and inform decisions within the infrastructure sector. It plays an important role in providing a forward view of planned infrastructure projects in New Zealand. Each quarter, updated project

information comes directly from government agencies, councils, and private sector entities involved in providing infrastructure services that support the way New Zealanders live, work, and play.

What changed?

In December 2022 the total value of infrastructure projects in the Pipeline stands at \$78.5 billion, an increase of 2% from September 2022.

Increases in Pipeline value include:

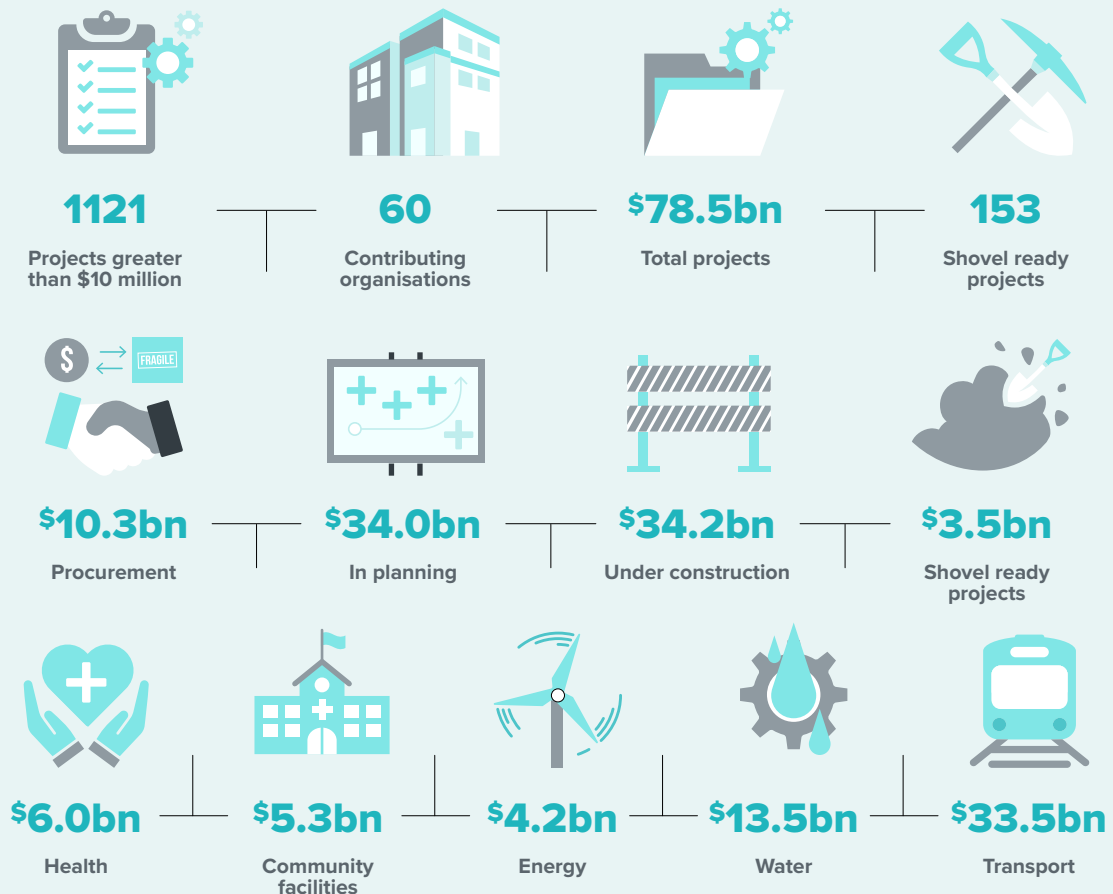
- \$1.21bn from new organisations providing their project data
- \$1.08bn from new projects from existing contributors
- \$1.09bn due to an increase in the value of existing projects.

Decreases in Pipeline value include:

- \$0.52bn of projects completed during the quarter
- \$0.21bn due to a reduction in the value of existing projects
- \$1.07bn of projects removed or replaced due to improvements in data quality.

Sixty contributing organisations provide project information to the Pipeline on more than 3000 planned and active projects for 150 infrastructure providers. A good response was received with 87% of contributors providing project updates.

Welcome to Marlborough District Council, Nelson City Council, Tasman District Council, and University of Canterbury who joined as new contributors between September and December 2022. We appreciate your efforts and look forward to our continued partnership.



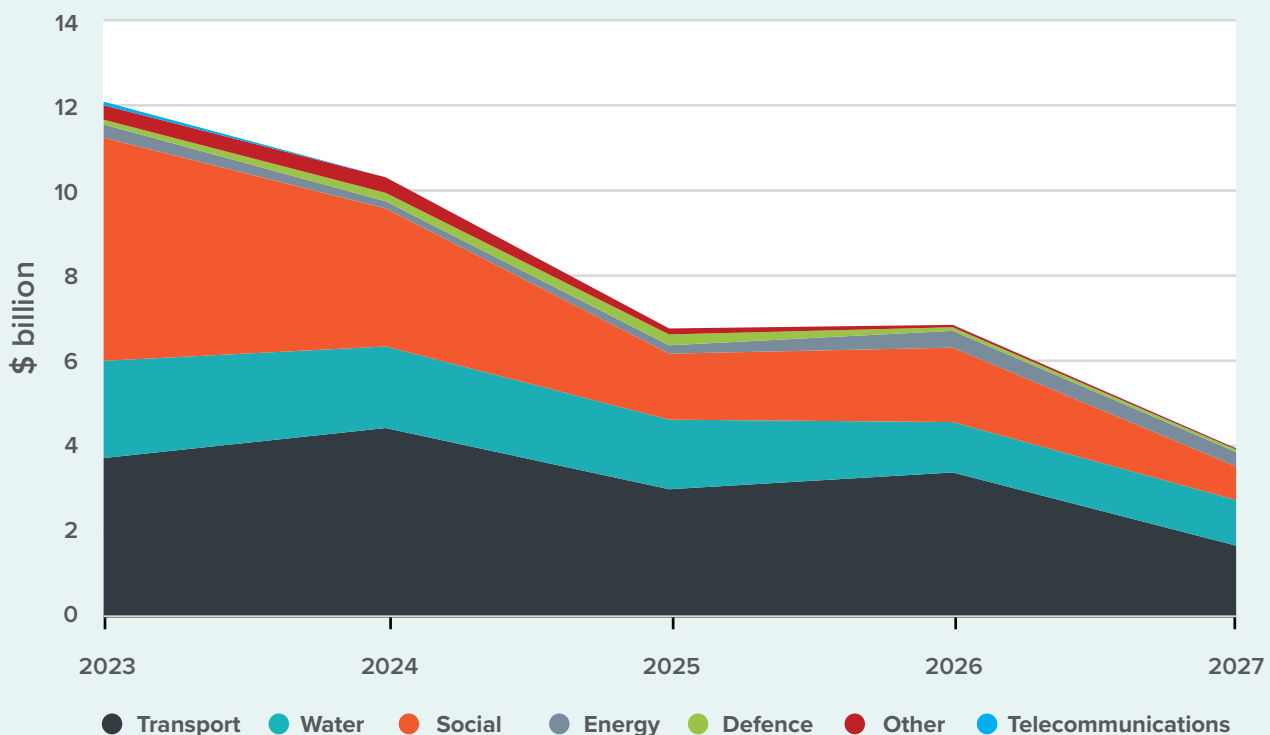
Forecast spend per sector

The forecast annual spend by sector for the projects in the Pipeline has been modelled and is illustrated in Figure 1. The spend projected for 2023 increased from \$11.8 billion in the September 2022 update to \$12.1 billion in the December 2022 update. This increase is mainly due to the addition of projects from new and existing contributors.

Figure 1:

Spending in transport, water, and social sectors dominates infrastructure spending over the next five years

Forecast project spend by sector 2023–2027



The significant spend in the social sector is expected to continue in the near term, accounting for \$5.3 billion or 43% of total forecast spend in 2023 (see Figure 1). These social infrastructure projects include 30% on social housing, 30% on education facilities, 21% on health infrastructure, and 18% on community facilities.

The value of forecast transport project spend is more even across the next five years; accounting for \$3.7 billion – or 31% – of the total

infrastructure spend forecast in 2023. The value of forecast transport spend currently peaks in 2024 at \$4.4 billion.

Based on the December 2022 returns from our contributors, annual spend on water projects was expected to peak in 2023 at around \$2.3 billion – and then decrease steadily to around \$1 billion by 2027. However, these figures will likely be revised significantly in upcoming quarters, following the flooding events across the country in the first quarter of 2023.

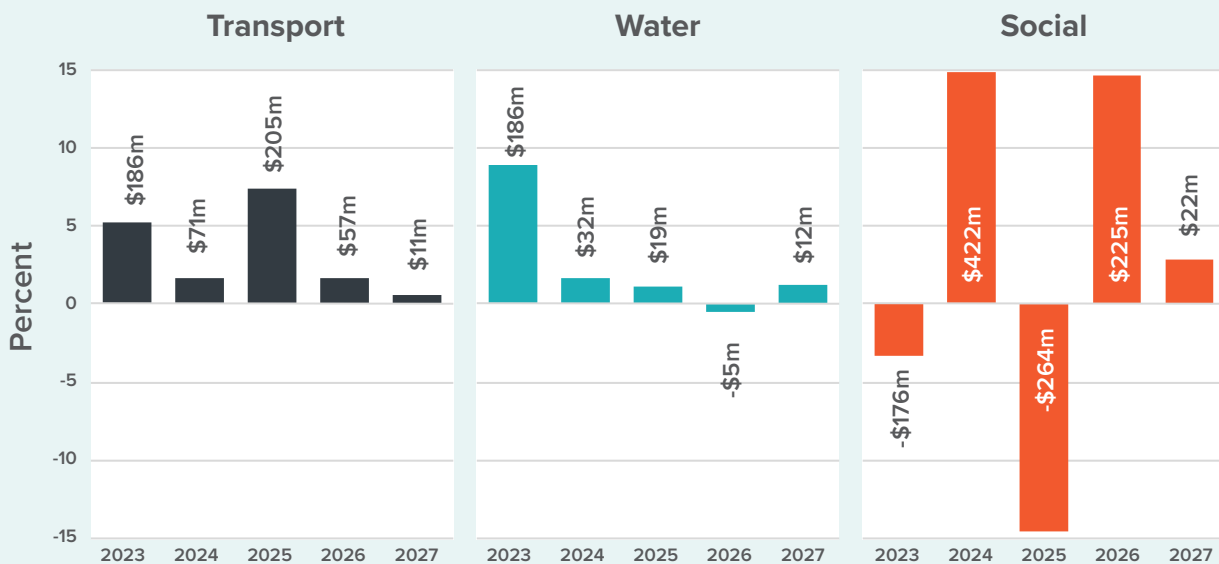
Forecast project spend continues to increase across key sectors

We are continuing to see increases in annual forecast spend across our main infrastructure sectors compared to the September 2022 quarter (see Figure 2).

Figure 2:

Change in forecast project spend from September 2022 to December 2022 Pipeline updates

Change in forecast project spend from September 2022 to December 2022 Pipeline updates



The main drivers behind the significant movements in the social sector are due to the addition of new projects, as well as projects that were replaced or removed following improvements in data quality.

Progress towards a complete Pipeline of infrastructure projects

Te Waihanga first published the Pipeline in the second quarter of 2020 (with regular updates since the fourth quarter of 2020) to support statutory functions required under the New Zealand Infrastructure Commission/Te Waihanga Act 2019.

The Pipeline continues to build towards the Commission's goal of providing a trusted and complete view of planned infrastructure activity

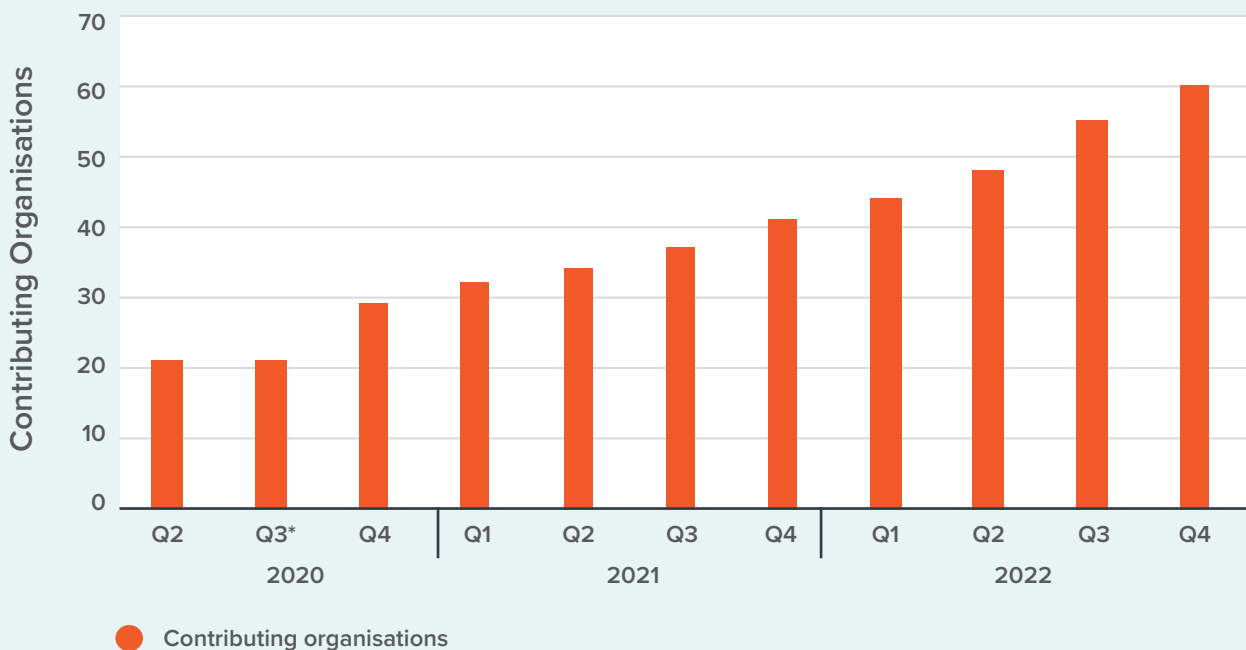
to the market. This continued development will facilitate improved planning, coordination, and delivery within New Zealand's broader infrastructure system.

We invite organisations not yet represented in the Pipeline to submit project data as we increase the breadth and depth of infrastructure projects in the Pipeline. The December 2022 quarter saw our contributing partners reach 60, up 5 on September 2022.

We thank our partners for their efforts with 87% providing updates this quarter.

Figure 3:

Quarterly count of Pipeline contributors, June 2020 to December 2022



*Pipeline project information was not updated in the third quarter of 2020

Are you aware of an infrastructure provider or project that we are missing?

Organisations do not need to be invited to submit their data; if your organisation has project information that is not included in the Pipeline, please contact the Pipeline team on pipeline@tewaihanga.govt.nz. View the Pipeline at www.tewaihanga.govt.nz/pipeline