

Dear Artist!

Welcome to Musikhuset Aarhus, Denmark



Here you will find General and Technical information for
"Symfonisk Sal" - The Symphonic Hall

The Symphonic Hall is a seated venue with a capacity of 1172 people

We look forward seeing you here in Aarhus, and don't hesitate to get in touch if you have any questions.



The Symphonic Hall

GENERAL INFORMATION

The Symphonic Hall is one of Denmark's most exclusive and impressive concert halls. The room really adds something extra to your event and presents it in an elegant way. The hall can accommodate 1.170 guests in an environment of light ash and acoustics, ranking among the best in the world.

SEATING CAPACITY

1172 seats (+8 wheelchair spaces)

LOAD-IN

At platform from Aros alle, Access to the stage through lift from level 0

Loading platform	0.90m
Lift door height	2.30m
Lift door width	1.85m
Lift depth	4.60m

ENTRANCE (MUSICIANS/CREW)

Upon arrival, please contact the Reception (Entrance via Skovgaardsgade 2C)

COMMUNICATION:

Free Wireless internet. Connect to "smart Aarhus" access code through sms.

Vouchers to access the WLAN will be handed out at the Reception (please order in advance)

DRESSING ROOMS

The Symphonic Hall has a lounge for 50-60 people.

There are 2 boys/girls dressing rooms, - and 3 soloist rooms, as well as 2-3 small warm-up rooms.

SMOKING

Smoking is prohibited in house. A dedicated outdoor smoking area is available.

LAUNDRY

Free access to 2 washing machines, tumble dryer, drying cabinet, irons and ironing boards.

CONTACT

Shipping/Load-in Address for "Symfonisk Sal":

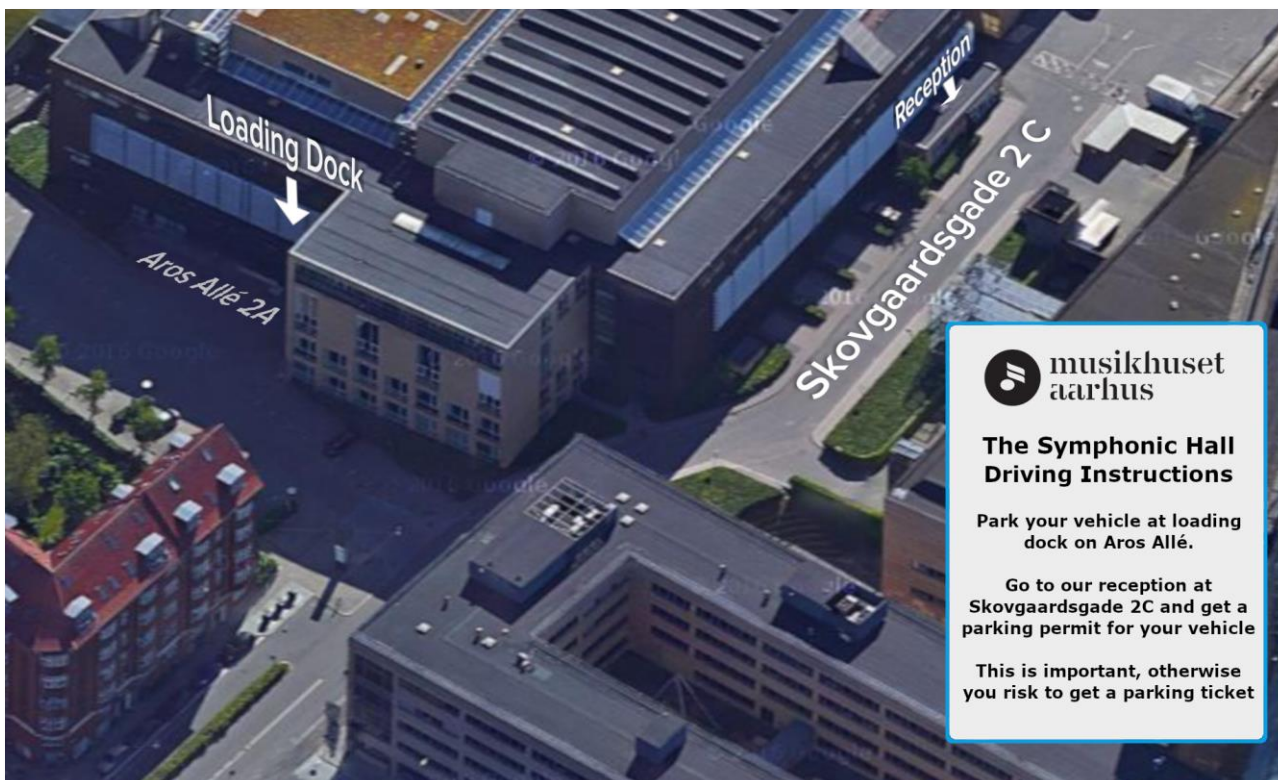
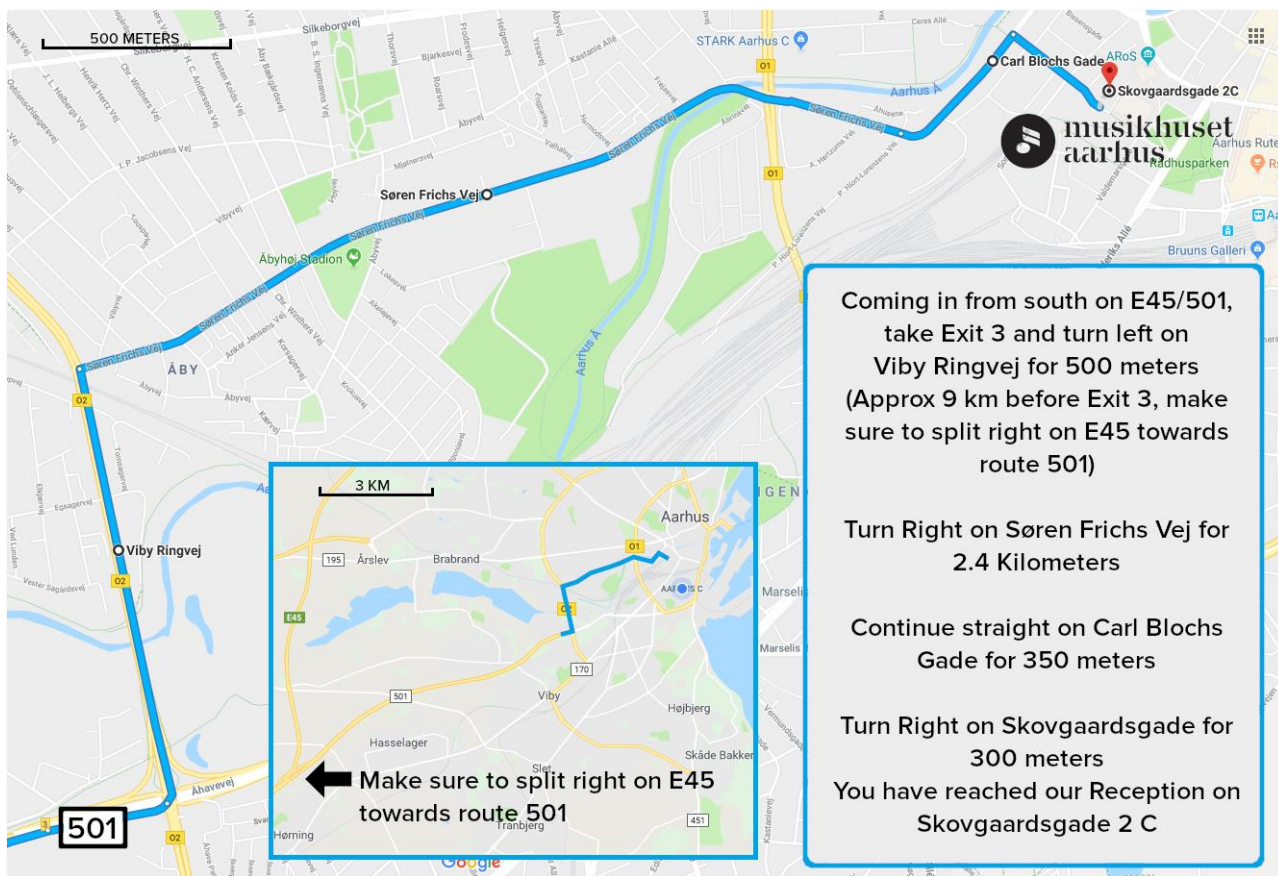
Musikhuset Aarhus
Aros allé 2A
DK-8000 Aarhus C
Denmark

DRIVING INSTRUCTIONS:

Address for GPS: **Street name:** Skovgaardsgade 2C **City:** Aarhus **Country:** Denmark

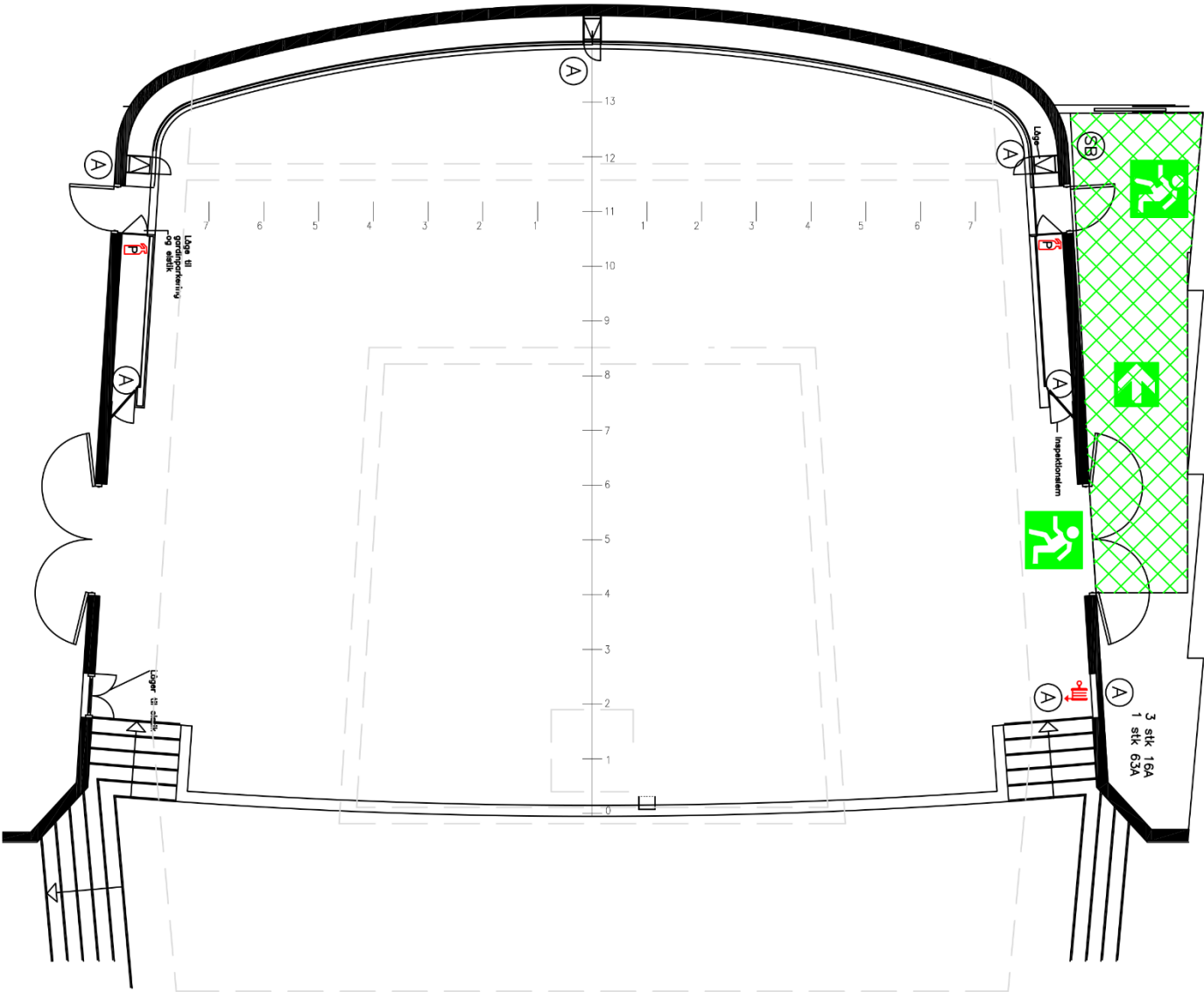
Coordinates: 56°09'10.7"N 10°11'52.6"E 56.152959, 10.197931

If you arrive by truck or big coach/bus, - please avoid the inner city, and follow the map below.



TECHNICAL SPECIFICATIONS

STAGE



SOUND

In The symphonic Hall, - we recommend a sound limit of 95 LAeq15 DB for amplified Music.
We have 10Eazy system available to measure the levels

F.O.H.

Allen & Heath D-Live dm32 Mixrack with; AES 2i/6o & Dante 128 Card
Allen & Heath D-Live C1500 Surface with Waves card

PA (ALL D&B)

Center cluster:

2 x Q7 – Floor and balconies
1 x Q10 – Floor and balconies
2 x C9 - Side balcony
1 x Q1 - Choir balcony

Additional Groundstack PA available:

Pr. Side:

3 x Q1 Tops
2 x V Subs
1 x Q10 Inner fill
3 x 44s Lip fill

For bigger setups where a larger PA is required, additional is available:

Pr. Side:

8 x XSL8
2 x XSL12
2 x V Subs
1 x Q10 Inner fill
3 x 44s Lip fill

MONITOR (NO DESK)

4 x d&b Max 2 wedges with 4 amp sides

Microphones:

AKG, Beyer, DPA, Neumann, Shure, Sennheiser DPA, BSS Line drivers
Wireless
Shure ULXD

LIGHTING

The standard hanging only include (white) front and top light for the symphony orchestra.

CANOPY (DOWNLIGHT):

107 pcs. GDS ArcSystem Pro 4 Fixture (4 Cell LED - 3000K)

BALCONY (FRONT/SIDE):

4 pcs. ROBE TX1 PosiProfile

4 pcs. ROBE TX1 PosiProfile (With gobo Module)

36 pcs. ETC Source Four Profile (750W Tungsten Halogen)

DMX controlled LED RGBW strips Dekolight in Ballustre and in woodwork behind stage

DMX controlled LED RGB strips Dekolight in orgel

16 pcs. 3kw Dimmer outputs on stage

LIGHTING CONSOLE

GrandMA3 Light

SMOKE/HAZERS:

it is not allowed AT ALL to use any kind of smoke, hazers etc. in The Symphonic Hall.

AV:

Projector Panasonic PT-DZ13K 12k ansilumen wuxga (1920*1080) Lens: ET-D75LE10(1,3-1,7:1) 1 x Rear
Projection screen 7,0m x 3,93 m (16:9)Stumpf Vario Flex rear CI

AUX POWER

Stage Right: 1 x 3 x 63A CEE form
1 x 3 x 32A CEE form
3 x 3 x 16A CEE form
230V single phase grounded LK plug

Stage Left: 1 x 3 x 63A CEE form
1 x 3 x 32A CEE form
3 x 3 x 16A CEE form
230V single phase grounded LK plug

