

Dear Artist!

Welcome to Musikhuset Aarhus, Denmark



Here you will find General and Technical information for
"Store Sal" = The Large Hall

The Large Hall is a seated venue with a capacity of 1572 people

We look forward seeing you here in Aarhus, and don't hesitate to get in touch if you have any questions



Downstage view with audience in orchestra pit

GENERAL INFORMATION

SEATING CAPACITY

1,572 seats including 96 chairs in the orchestra pit
Room for 16 wheel chairs

LOAD-IN

Directly on stage
Loading Platform: 0,80m high.
Loading Door: 4.3m wide x 4.0m high
Power for truck/bus: 1 x 3 phase 16A CEE 230 V + 1 x 1 phase 10A CEE 230V
+ 2 x 3 phase 32A CEE 230V

ENTRANCE (BAND/CREW)

Upon arrival, please contact the Reception (Entrance via Skovgaardsgade 2C)

EXTERNAL PRODUCTION OFFICE (G100)

15 m² office with computer, telephone and access to copy machine.

WI-FI

Free Wireless internet. Connect to "smart Aarhus" access code through sms.
Vouchers to access the WLAN will be handed out at the Reception (please order in advance)

DRESSING ROOMS

Level 1: (Same as stage)

5 rooms for 3 people with shower and toilet (G102 - G106)
3 rooms for 3 people with shower and toilet (G107 - G109)
1 room for 10 people (G101)

Level 0:

1 room for 22 people (G001)
1 room for 12 people (G002)
Showers and toilet by the end of the corridor.

SMOKING

Smoking is prohibited in-house. A dedicated outdoor smoking area is available.

LAUNDRY

Free access to 2 washing machines, tumble dryer, drying cabinet, irons and ironing boards.

CONTACT

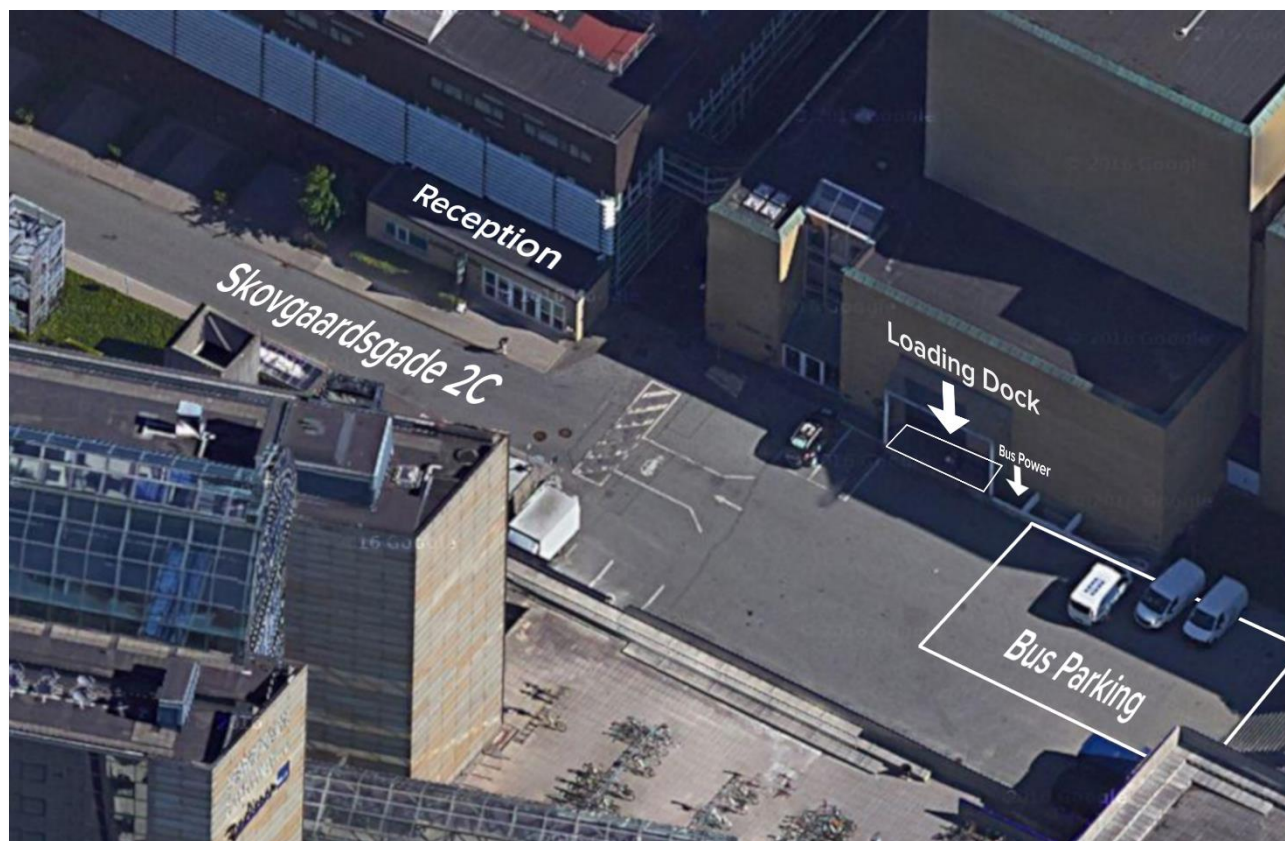
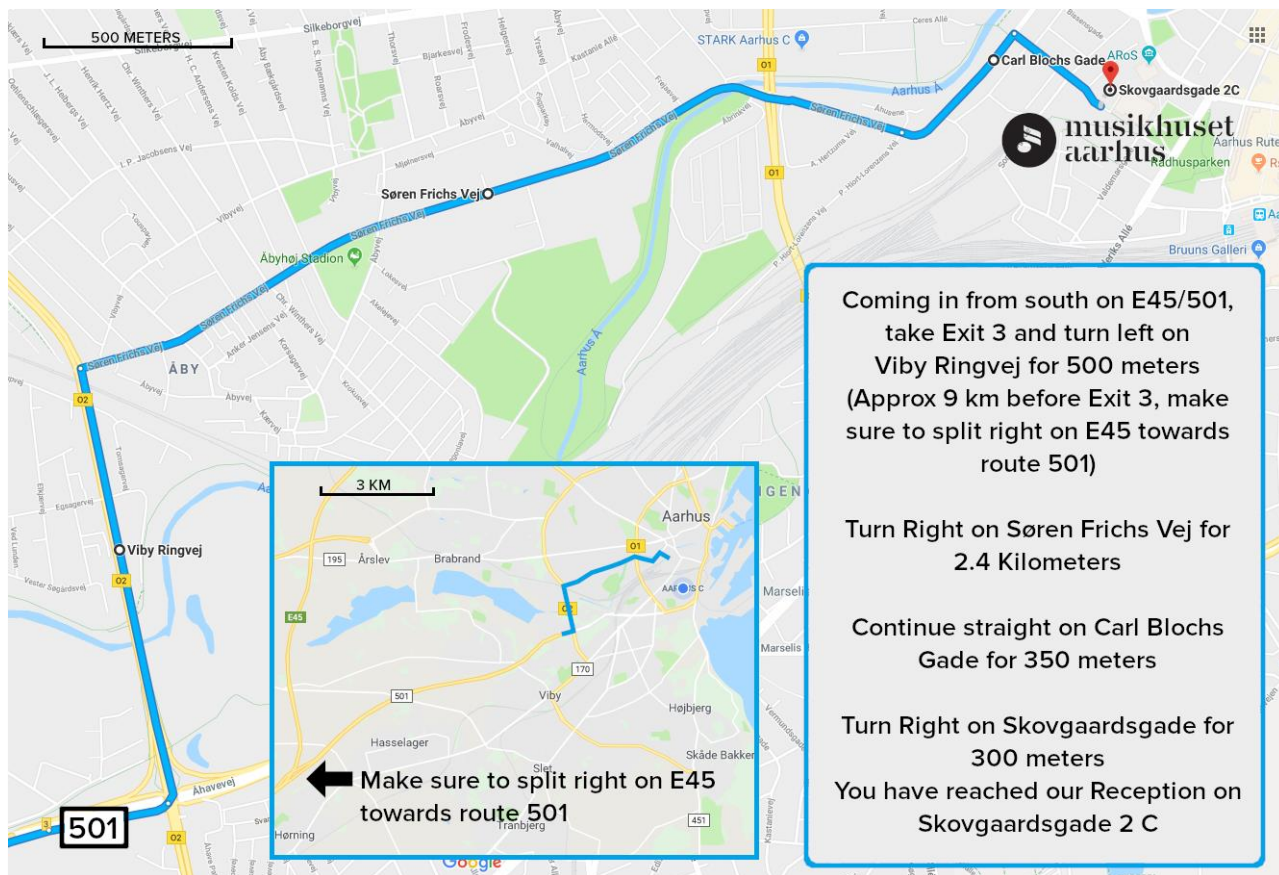
Shipping/load-in Address for "Store Sal":

Musikhuset Aarhus
Skovgaardsgade 2C
DK-8000 Aarhus C
Denmark

DRIVING INSTRUCTIONS:

Address for GPS: **Street name:** Skovgaardsgade 2C **City:** Aarhus **Country:** Denmark
Coordinates: 56°09'10.7"N 10°11'52.6"E 56.152959, 10.197931

If you arrive by truck or big coach/bus, - please avoid the inner city, and follow the map below.



TECHNICAL SPECIFICATIONS

STAGING

STAGE DIMENSIONS:

Width: 25.0m
Depth: 18.0m
Proscenium: 10.0m-18.0m wide x 8.1m high.
Stage Floor: Black painted wooden floor 40mm (Floor load: max 500 kg/m²)

FORESTAGE (RAISED ORCHESTRA PIT):

Black painted wooden floor over the orchestra pit
extend the stage a further 6.5m beyond the permanent stage edge

ORCHESTRA PIT

Width: 16.0m
Depth: 6.5m – 11,0m
The orchestra pit floor is divided into 3 platforms,
which can be lowered maximum 2.4m below stage level

WING STAGE/OFF STAGE

Stage Left: 90 m²
Stage Right: 150 m² (Loading Dock)

FLYING SYSTEM

Flying height: 23m
65 Motorised flybars (500 kg) - Pipe diameter: 50mm, Pipe length: 19.00m
2 Point hoists (250 kg)
5 Electric chain hoists (1000 kg)
1 Motorised house curtain (vertical and horizontal) with variable speed

FOH RIGGING POINTS

12 Rigging points 7 chain hoist 1000 kg

MASKING

1	Front border	19.0m x 10.0m (black)
5	Pair of legs	3.5m x 10.0m (black)
5	Borders	19.0 x 3.0m (black)
2	Full black	19.0m x 10.0m (black)
2	Side curtains	17.5m x 10.0m (black)

SCREENS

1	Cyclorama	19.0m x 10.0m (white)
1	Cyclorama	17.0m x 10.0m (grey)
1	Scrim/Bobbinet,	19.0m x 10.0m (black)
1	Scrim/Bobbinet,	19.0m x 10.0m (white)

RISERS/PLATFORMS

We offer a wide selection of portable Stage Risers in European (metric) standard sizes.
Available heights are: 200mm, 400mm, 600mm, 800mm, 1000mm, 1200mm, 1400mm.

FIRE CURTAIN

Fire curtain line is to remain cleared of any solid objects.

AUX POWER

Stage left: 1 x 3 phase 63A CEE form
2 x 3 phase 32A CEE form

Stage right: 2 x 3 phase 125A CEE form
2 x 3 phase 63A CEE form
3 x 3 phase 16A CEE for

INTERCOM

6 x Green-GO Belt packs Wired + 6 x Belt packs Wireless

SOUND

In The Large Hall, - we recommend a sound limit of 95 LAeq15 DB for Musical Theatre and 98 LAeq15 DB for Music. We have 10Eazy systems installed to measure the levels.

PA-SYSTEM

(per side) 6 x d&b V8
4 x d&b V12
6 x d&b V sub - Flown
2 x d&b C6 nearfill
3 x d&b 44s frontfill
1 x d&b Q7 Under Balkony Fill
1 x d&b Q7 Balcony Fill
1 x d&b E3 Under Balcony Fill
1 x d&b J Ultra sub

4 x d&b V12 Center cluster

F.O.H.

Soundcraft VI 1000 – Installed in booth
Soundcraft VI 7000 / VI 3000 or
Allen & Heath D-Live S7000 with & Dante 128 Card & Waves card + dm64 Mixrack with; AES
2i/6o
are available for FOH position in center of hall

MONITORS

Wedges

16 x d&b M4 wedges (18 amp sides)
8 x d&b MAX 2 wedges
2 x Sidefill : d&b 1 x C 4 Top , 2 x C 4 Sub per side

Speakers

4 x d&b C 6, with D&B P1200 controller/amps
10 x d&b E3 with E-pac amps

Mic's

AKG, Beyer, DPA, Neumann, Shure, Sennheiser
DPA ,BSS Line drivers

LIGHTING

Please find detailed lighting plots for The Large Hall, WYG, PDF, DWG in: [Dropbox folder](#)

DESK MA grandMA3 light

DIMMERS ETC Sensor Dimmer system
350 x 3 kW
10 x 5 kW

STANDARD HANGING

Profile spots

24 x Niethammer PHZ 2511 11° - 22°, 2500W (on 3rd and 4th bridge)
8 x Robert Juliat SX 611 Zoom, 11° - 26°, 1200W (on 2nd side tower)
15 x Robert Juliat SX 614 Zoom, 16° - 35°, 1200W (on 2nd bridge)

Fresnels

5 x Robert Juliat 329/339, 16° - 72°, 2000W (on 2nd bridge)

Moving Lights

Above stage(moveable):

10-meter Prerig truss (1): 6 x Robe spiider and 6 x High End Solaframe Theatre
12-meter Prerig truss (2): 8 x Robe spiider and 8 x High End Solaframe Theatre
12-meter Prerig truss (3): 8 x Robe spiider and 8 x High End Solaframe Theatre
12-meter Prerig truss (4): 8 x Robe spiider and 8 x High End Solaframe Theatre

Followspots

3 x Robert Juliat Cyrano HMI, 2500W

ADDITIONAL EQUIPMENT

Profile spots

54 x Robert Juliat SX 614 Zoom, 16° - 35°, 1200W
10 x Robert Juliat SX 613 Zoom, 28° - 54°, 1200W

Fresnels

22 x Robert Juliat 329/339, 16° - 72°, 2000W
4 x ADB 5000W

Par Cans

120 x Thomas Par64 standard CP 60/61/62, 1000W

Cyclorama

24 x Selecon Aurora Cyc, 1250 W
24 x Selecon Aurora Cyc (floor), 1250 W

AV

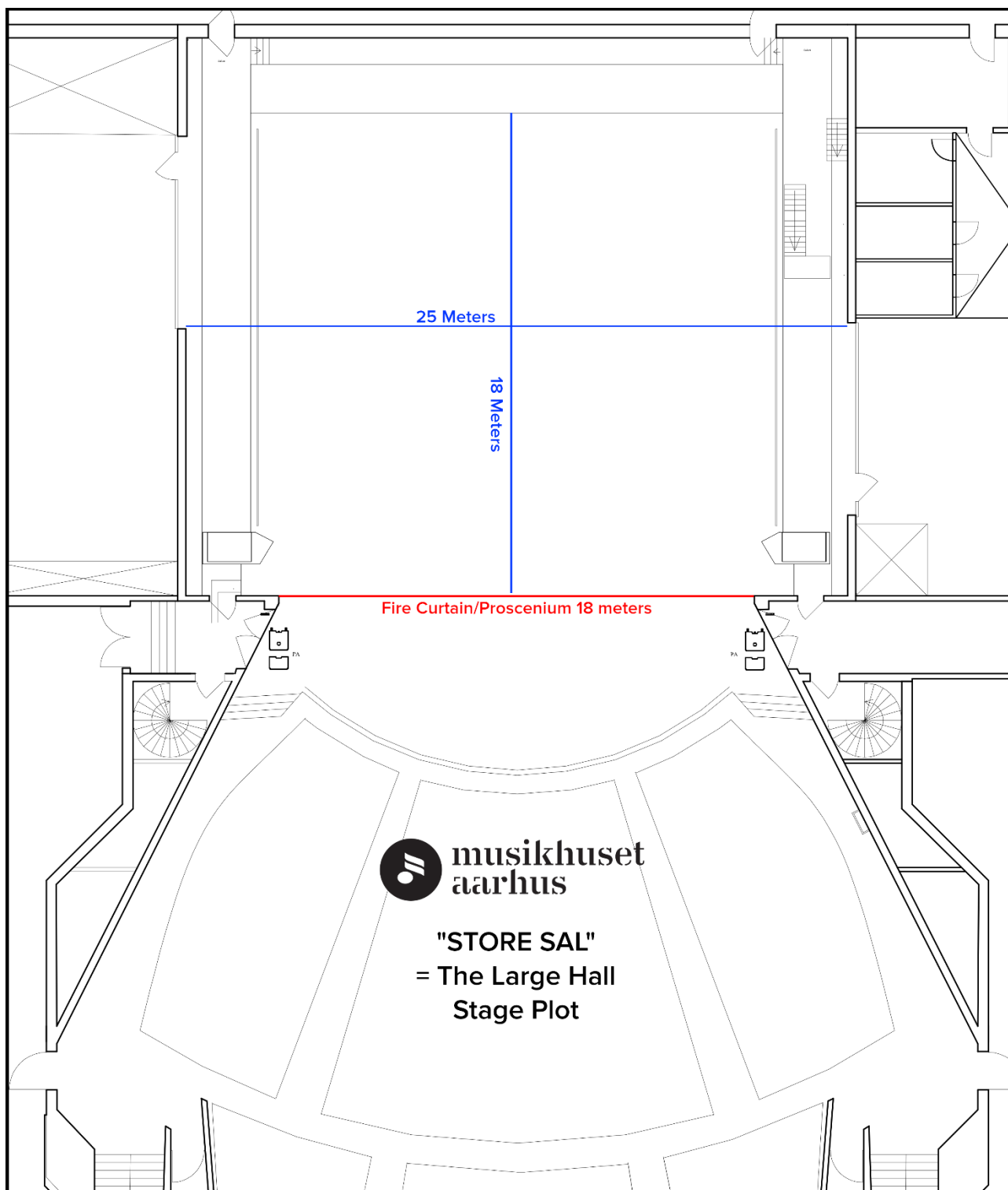
Projectors

2 x Panasonic PT-DZ21K2EJ 20k wuxga (1920*1080)
Lenses: 2 x ET-D75LE6 (0,9-1,1:1), 2 x ET-D75LE20 (1,7-2,4:1), 2 x ET-D75LE30 (2,4-4,7:1)
1 x Rear Projection screen 11,70m x 6,67m pic size 11,50m x 6,47 (16:10)
Stumpf Vario Flex rear CI
Distance from booth to fire curtain, approx. 33 meters

STAGE PLOT

Simple stage plot below

Please obtain PDF and WYG files by request to Musikhuset Aarhus

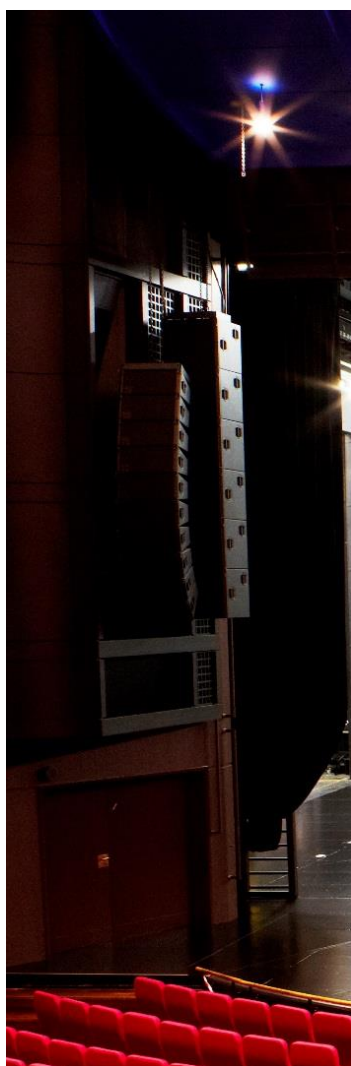


PICTURES

STAGE



Top Ceiling View



PA Hang D&B V series



Upstage view with orchestra pit in stage level



View from FOH with Forestage/Orchestra Pit in stage level



Stage sideview towards load-in dock



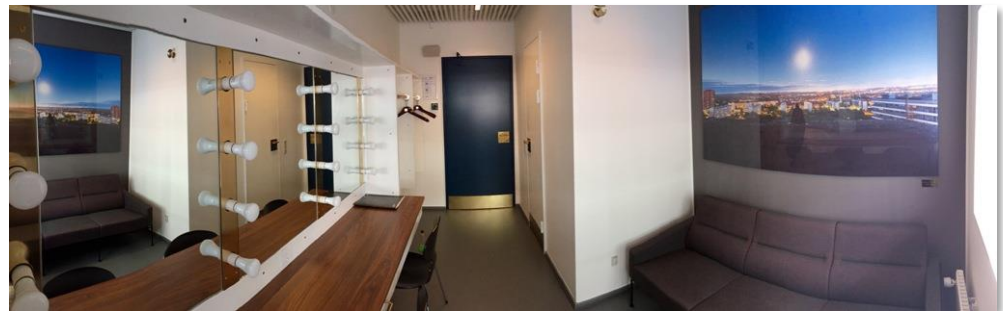
*FOH position
Removeable seats on row 15 makes size flexible*



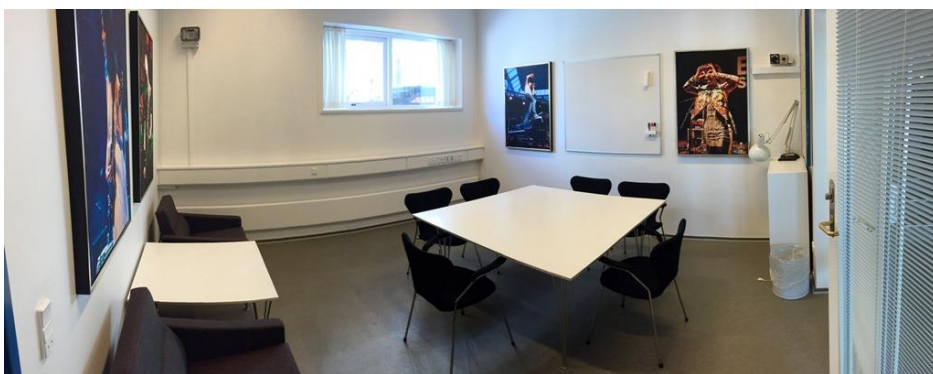
DRESSING ROOMS, EXTERNAL PRODUCTION OFFICE AND GREEN ROOM



Large Dressing Room G107



Soloist Dressing Room



External Production Office G100



Green room Lounge



Green room catering area.