



# WAREHOUSE SOLUTIONS **TAILORED** FOR YOU

WAREHOUSE AUTOMATION • NEW & USED MHE • LIQUIDATIONS • CONSTRUCTION • FACILITY WIND DOWN



**YOU** NEED A SINGLE SOURCE  
TO FULFILL YOUR GOALS.

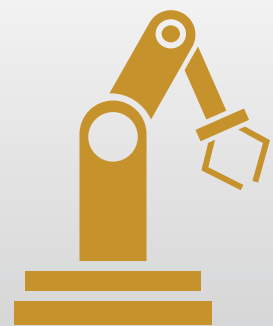
**These Solutions Require:**

**THE TIME** to implement the solution

**THE KNOWLEDGE** to ensure the solution works

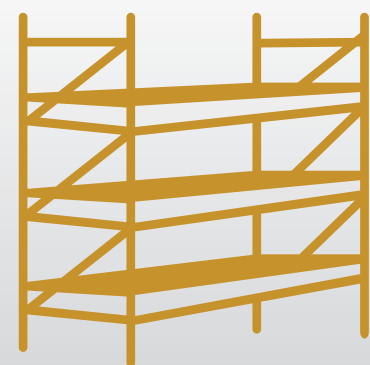
**THE RESOURCES** to execute the solution

# TAILORED SOLUTIONS, LEADING YOU TO SUCCESS!



## WAREHOUSE AUTOMATION

Conveyor Systems  
Mobile Robotics  
Robotic Picking Systems  
Sortation Systems  
Automated Storage & Retrieval  
Warehouse Software Solutions



## NEW & USED MHE

Pick Modules  
Pallet Rack  
Shelving  
Forklifts / Batteries / Chargers  
Bins & Containers  
Guards and Safety Rails



## LIQUIDATION

Storage Systems  
Conveyance & Automation  
Lift & Aerial Equipment  
Furniture & Fixtures  
IT & Office Equipment  
Tool & Fans



## CONSTRUCTION & IMPROVEMENTS

Design & Engineering  
Installation & Build Out  
Compliance and Permitting  
Project Management  
Technology Integration  
Site Cleanup and Final Inspection



## FACILITY WIND - DOWN

Equipment Removal  
Relocation Services  
Property Maintenance  
Asset Valuation  
Compliance Assistance  
Site Cleanup



# FEATURED PROJECT: BED BATH & BEYOND



## LOCATIONS:

Las Vegas, NV ~ 525K SF

North Las Vegas, NV ~ 189K SF

Lewisville, TX ~ 800K SF

Pendergrass, GA ~ 811K SF

Port Reading, NJ ~ 610K SF

Secaucus, NJ ~ 345K SF

## JOB DETAILS:

Over 3.5M Square Feet of Distribution Centers

Liquidated All Assets

350K+ Pallet Positions of Rack Dismantled & Re-purposed

20+ Miles of Conveyance Recycled

Prepared Facilities for Lease/Landlord Turnover

Cut, Cap & Remove MHE Mechanical Systems

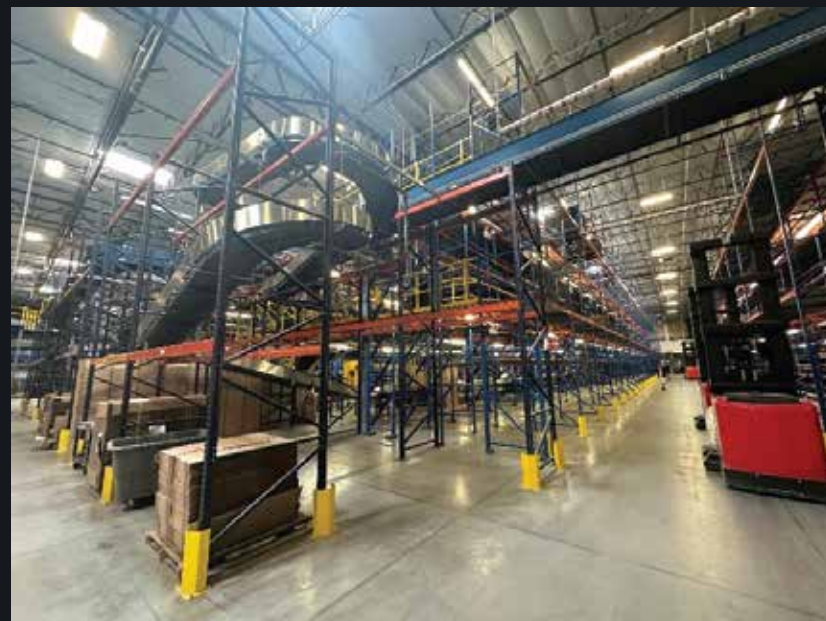
Code Out Obsolete Alarm System

Epoxy and Restore Warehouse Floor

Provided Guidance Throughout Business Wind-down,

All While Orchestrating Cost Effective Plans to Re-utilize

Assets Into New Facilities for Our Valued Customers





# FEATURED PROJECT: ZULILY



## LOCATIONS:

Bethlehem, PA ~ 800K SF

Reno, NV ~ 710K SF

Lockbourne, OH ~ 737K SF



## JOB DETAILS:

1.5M SF Distribution Center “White Box” Solution

250K SF Pick Modules Dismantled & Re-purposed

Over 10 Miles of Conveyance

Liquidated All MHE Assets

Prepared Facilities for Lease/Landlord Turnover

Code Out Obsolete Alarm System

Epoxy and Restore Warehouse Floor

Conserved Earth’s Natural Resources by

Re-purposing and Recycling Over 95% of Materials





# FEATURED PROJECT: FLEXPOR



## LOCATIONS:

Phillipsburg, NJ ~ 1.4M SF

Dallas, TX ~ 800K SF

Los Angeles, CA ~ 1.1M SF

## JOB DETAILS:

Dedicated Project Management

Provided Engineered Drawings

Permit Management and Execution

Provide Proper Licensing, Insurance, & Bonding

Procurement And Installation of the Following:

Over 100k Pallet Positions VNA Pallet Racking

Over 50k Bays RiveTier Shelving

Over 1M Product Bin Boxes and Labels

Installation Wire Guidance Systems

Facility Tenant Improvements

(New Led Lighting, Bathroom & Office Build Out, Paint)

Customer Liaison For Facility Start-Up



# FEATURED PROJECT: BOOHOO

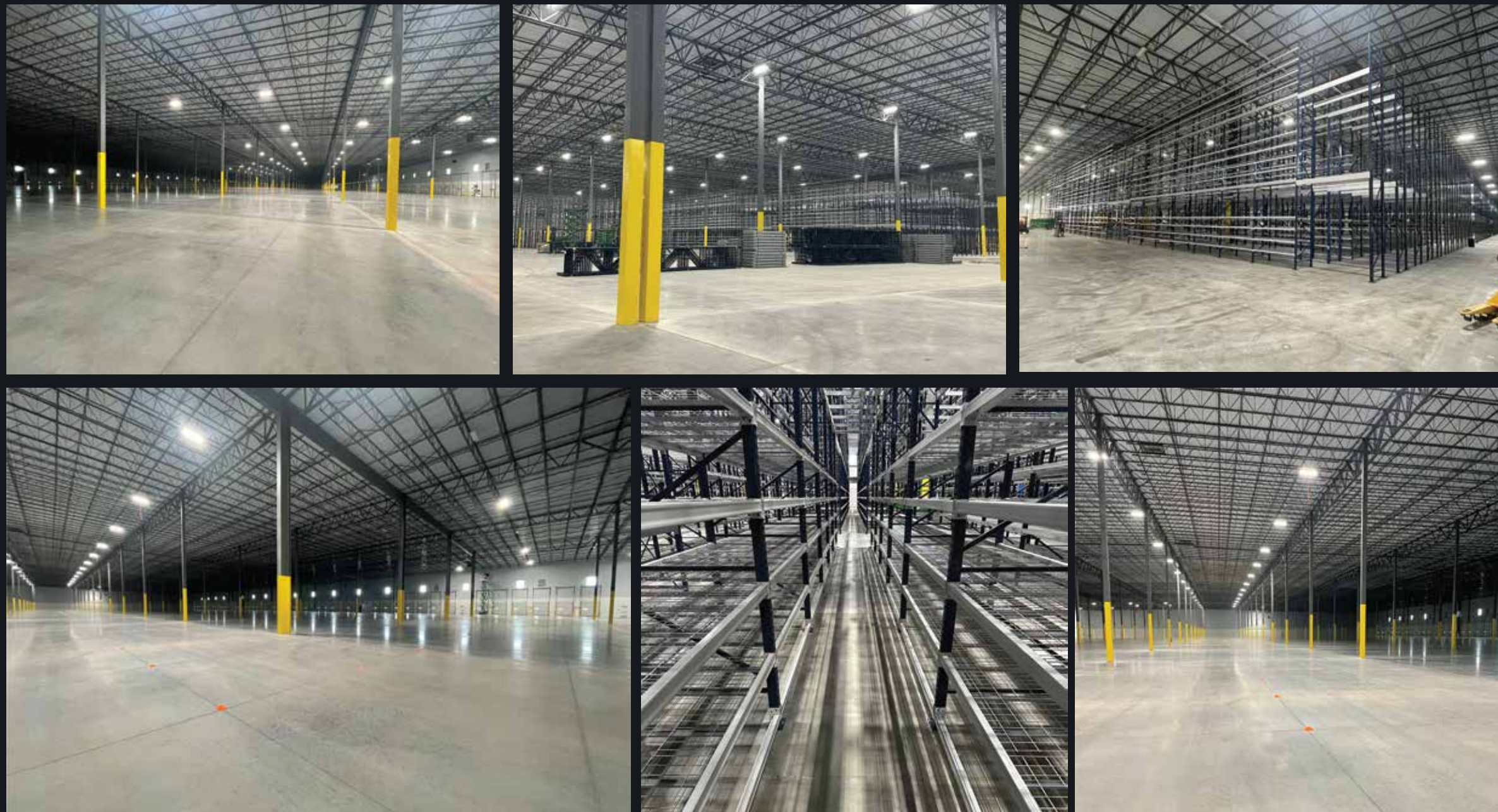


## LOCATIONS:

Elizabethtown, PA ~ 1.1M SF

## JOB DETAILS:

Design, Procurement & Installation of  
600K SF Pick Module  
Professional Management of MEP Systems  
Oversaw Permit Approval Process  
Managed Customer Logistics





# FEATURED PROJECT: AMERICAN NITRILE

## LOCATIONS:

Grovecity, OH ~ 527,127K SF

## JOB DETAILS:

Provided guidance and oversight to build a state-of-the-art facility  
Oversaw the freight logistics of nitrile glove manufacturing assembly lines.

- (Managed shipment from Malaysia to Columbus, OH)

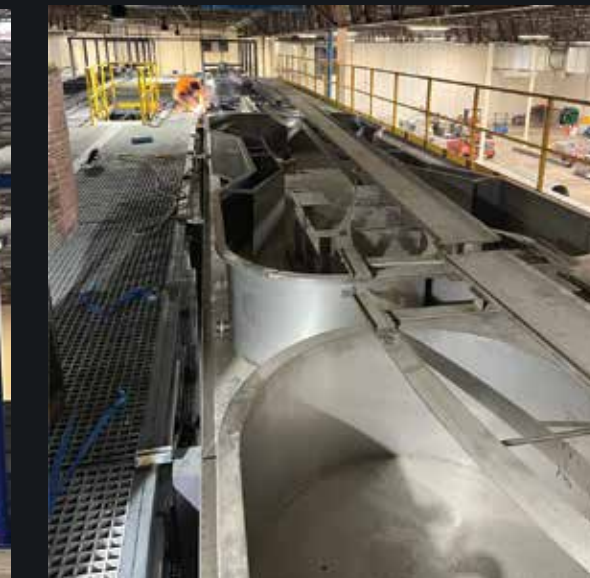
Installation of six nitrile glove assembly line structures.

Custom fabrication of components

Dedicated Project Management

Management & Scheduling of MEP Contractors

G&P Engineering Services Provided





# CO-FOUNDERS

“THE BROTHERS”



**NICK GOREY**



**MIKE GOREY**

The founders started nearly 30 years ago as a wholesaler and installer of industrial storage systems. After decades as regional distributors of pallet racking and building systems, we evolved into a full-service, turn-key industrial consulting firm. We specialize in material handling, warehousing, logistics, manufacturing, and commercial real estate management. Our extensive experience with large-scale operations and a focus on personalized service have positioned us to deliver exceptional value and satisfaction to clients nationwide.



# HOW ARE WE BUILT TO HELP YOU?

- **Founded in 2004**
- **50+ Regional MHE specialists nationwide**
- **Experience in decommissions, commercial construction, automation, warehousing and distribution**
- **Thought leaders, engineers, project managers, and doers**



**G&P Distribution Facilities**



**Auxiliary Locations**

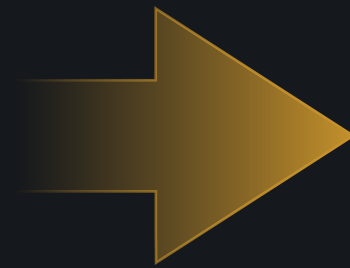


# HOW IT'S DONE:



## ASSESS YOUR NEEDS

Together we can talk through potential solutions to handle your day-to-day Operations. We can even set up an on-site visit.



## DEVELOP A PLAN

Next let's create a comprehensive plan including layouts, project timelines and deliverables.

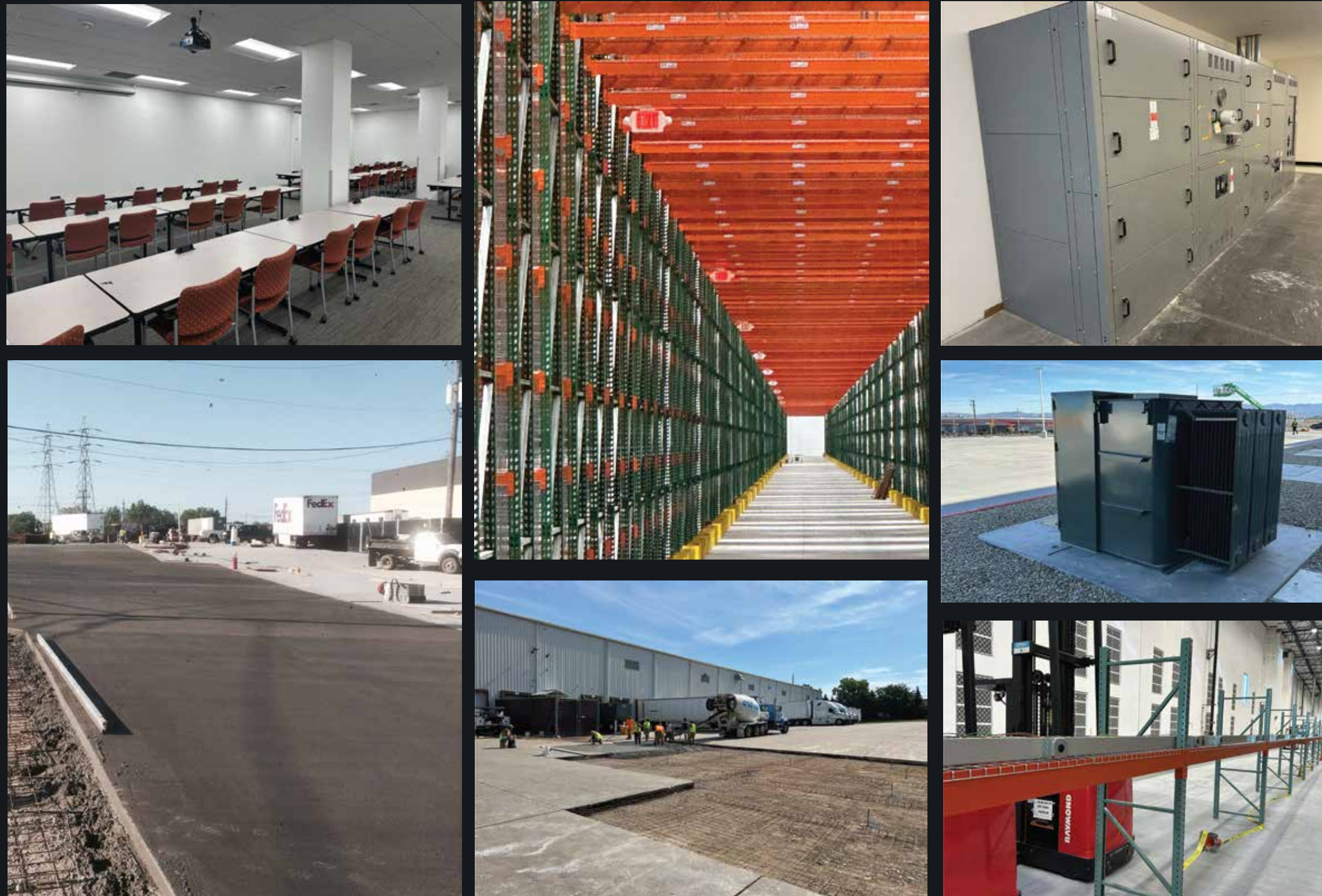


## MAKE IT HAPPEN!

Time to get to work. Execute your tailored solution on time and on budget!



# GENERAL FACILITY SOLUTIONS



- **LED RETROFITS**
- **LIGHTING CONTROL SYSTEMS & GENERATORS**
- **ELECTRICAL SERVICE UPGRADES**
- **TENANT IMPROVEMENTS**
- **FIRE SPRINKLER UPGRADES**
- **DOCK & DOOR SERVICES**
- **DATA & NETWORKING SYSTEMS**
- **CONCRETE & ASPHALT REPAIRS**





# FEATURED PROJECT: ALLSTATE



## LOCATIONS:

Coppell, TX ~ 98K SF

## JOB DETAILS:

98,000 SQ FT Complete White Box of  
4-Level Record Storage Facility

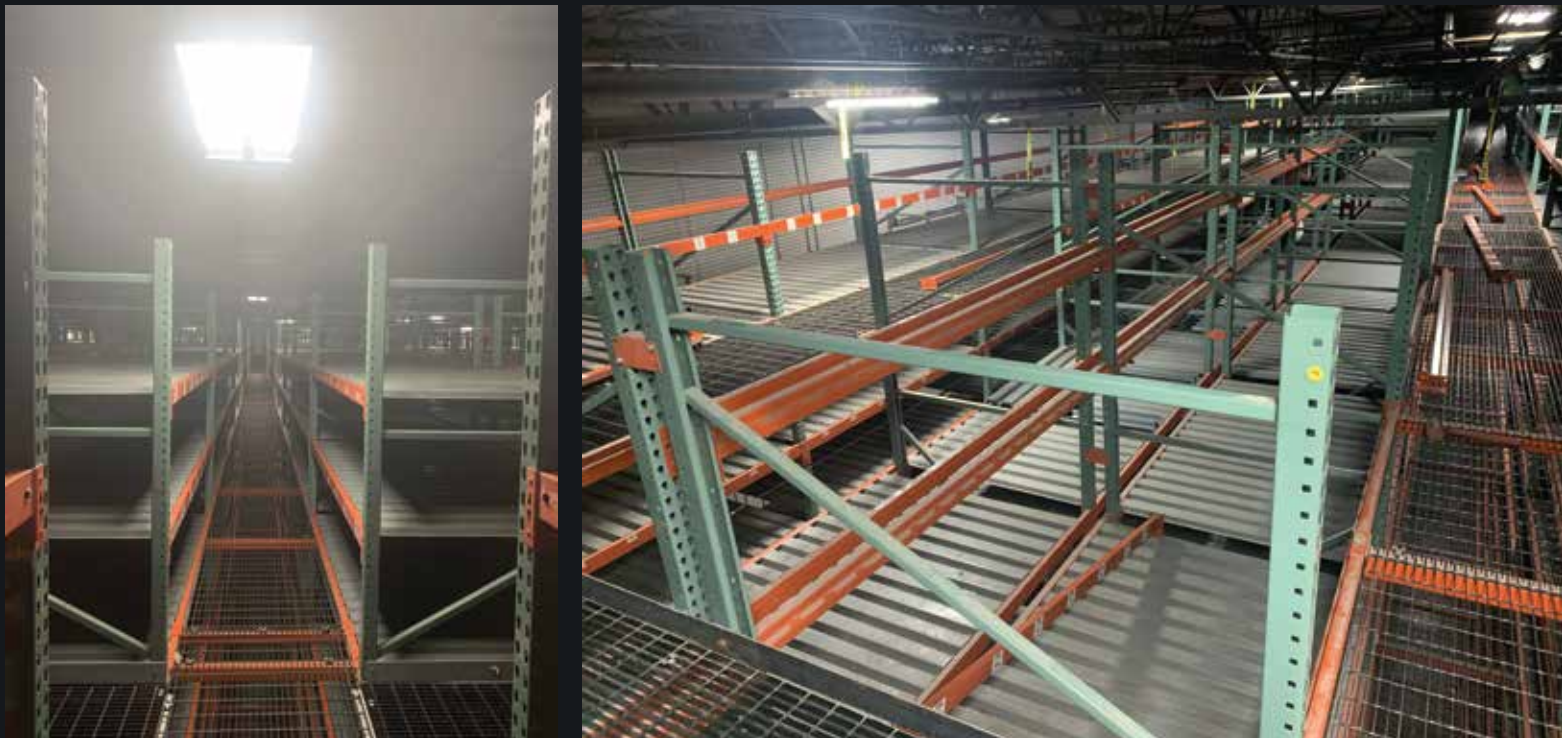
Electrical, Lighting, HVAC, and Sprinkler Removal

Sprinkler System Reprogram and Code Out Old Zones

Floor anchors cut clean

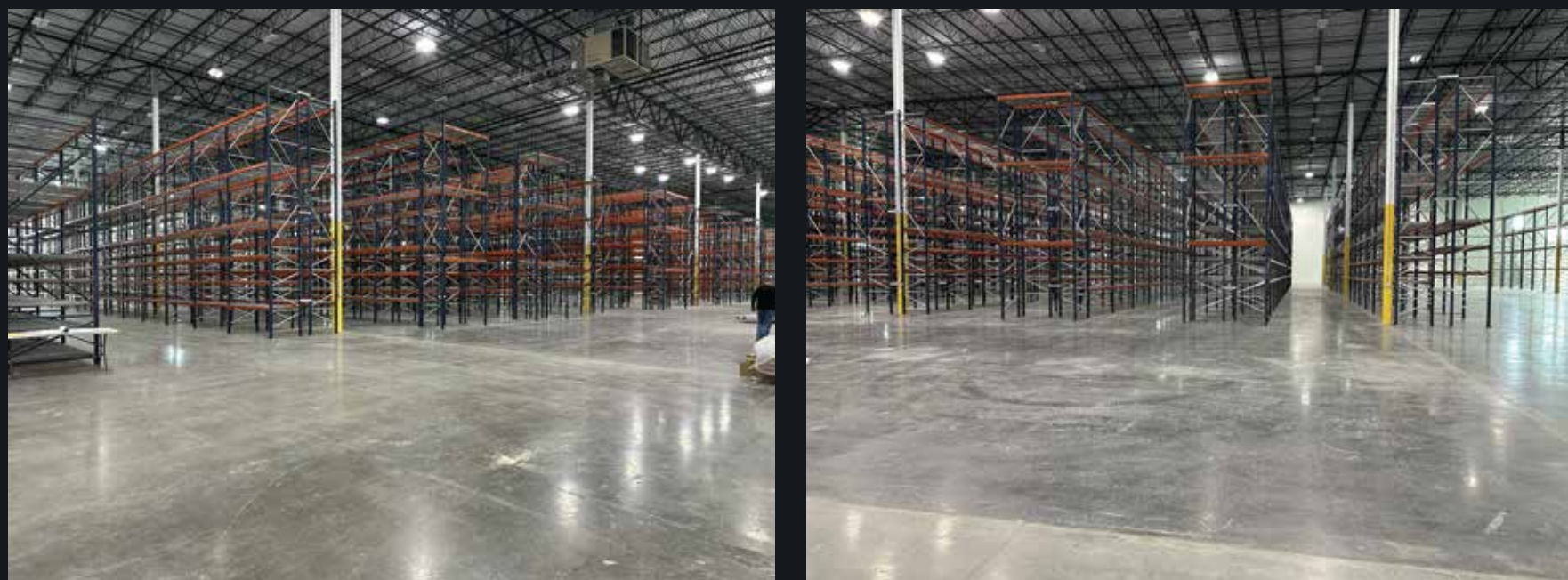
Floor repaired and cleaned

Under 5 Weeks





# FEATURED PROJECT: CHADWELL



## LOCATIONS:

Richmond, VA  
Indianapolis, IN  
Memphis, TN  
Charlotte, NC  
Kansas City, MO  
Louisville, KY  
Birmingham, AL  
Austin, TX  
Houston, TX  
Mobile, AL  
Stafford, TX  
La Porte, TX  
Braselton, GA

San Antonio, TX  
Dallas, TX  
Nashville, TN  
Raleigh, NC  
Orlando, FL  
Tampa, FL  
Chicago, IL  
Columbus, OH  
Detroit, MI  
Las Vegas, NV  
St. Louis, MO  
Lawnside, NJ

## JOB DETAILS:

Over 3.2M SF MHE installations  
Procured Engineered Drawings  
Implemented Cohesive Layout Across All Sites  
Oversaw Permit Approval Process  
Managed Customer Logistics



# FEATURED PROJECT: SEARS / KMART



## LOCATIONS:

Wilkes-Barre, PA ~ 1.4M SF

Jacksonville, FL ~ 1.1M SF

Manteno, IL ~ 1.8M SF

Dallas, TX ~ 2M SF

Chambersburg, PA ~ 1M SF

Warren, OH ~ 1.4M SF

## JOB DETAILS:

Over 8.7M SF Fully Fitted, White Boxed

Removed And Liquidated All Asset

Decommissioned 90 Miles Of Conveyance

13 Sorters, 100,000+ Positions Of Selective Rack, 12 Pick Modules,

Cut, Capped, And Removed All Electrical

Epoxied And Restored Warehouse Floor

Buildings All Returned To Owner's Specifications

Each Project Completed In Under 15 Weeks





# FEATURED PROJECT: PIER1



## LOCATIONS:

Columbus, OH ~ 1.3M SF

DuPont, WA ~ 800K SF

Aberdeen, MD ~ 800K SF

## JOB DETAILS:

2.9M SF White Box in total

Over 10K Bays Dismantled

Electrical, HVAC Spec Reset

Removed and Liquidated all assets

Cut, Cap and Remove Electrical

Epoxy and Restore Warehouse Floor





# FEATURED PROJECT: TOYS “R” US



## LOCATIONS:

Atlanta, GA ~ 1.4M SF  
Stockton, CA ~ 1.1M SF  
Flanders, NJ ~ 1.8M SF  
Lee's Summit, MO ~ 1.3M SF  
Joliet, IL ~ 900K SF  
Dallas, TX ~ 1.4M SF



## JOB DETAILS:

Over 8M SF White Box  
20 miles of Conveyance dismantled  
Remove and Liquidate all assets  
Cut, Cap and Remove Electrical  
Added new Security System for Tenant  
Remove and Restore Sprinkler System  
Epoxy and Restore Warehouse Floor





# FEATURED PROJECT: WHEELPROS



## LOCATIONS:

- |             |                |                |
|-------------|----------------|----------------|
| Arizona     | Maryland       | Oklahoma       |
| California  | Massachusetts  | Oregon         |
| Colorado    | Michigan       | Pennsylvania   |
| Connecticut | Minnesota      | South Carolina |
| Florida     | Missouri       | Tennessee      |
| Georgia     | Nevada         | Texas          |
| Illinois    | New Jersey     | Utah           |
| Indiana     | New York       | Virginia       |
| Kansas      | North Carolina | Washington     |
| Louisiana   | Ohio           | Wisconsin      |

## JOB DETAILS:

- Sole MHE Provider for Past 15 Years
- Over 5M SF MHE installations
- Procured Engineered Drawings
- Implemented Cohesive Layout Across All Sites
- Oversaw Permit Approval Process
- Manage Customer Logistics



# PROVIDING SOLUTIONS, NOT SALES

“

In working with G and P Construction for years what I really appreciate is their high level of professionalism and technical ability whether it is a small or extremely large project.

-Dan, Interlake Mecalux

”





# STRESS - FREE PROJECTS



## START WITH A CALL

+1 (855) 494 - 4832 • [info@gandpconstruction.com](mailto:info@gandpconstruction.com)



[view current inventory](#)



[view recent projects](#)