

ANIMAL PARADISE



Presented and built by

BRICKLIVE



OVER 45 AMAZING BRICK MODELS



BRICKLIVE ANIMAL PARADISE

ANIMAL PARADISE is a brick-tastic model trail with the mission of educating the next generation of children on the theme of endangered animal species in a fun and friendly environment, a day out that can be enjoyed by the whole family. The tour contains brick-built statues and photo opportunities which are themed around animals that exist within various habitats across the globe. Visitors will come face-to-face with amazing creatures such as an imposing Giraffe, a proud African Lion, a powerful Rhino and a graceful Dolphin.

The four habitats represented in ANIMAL PARADISE are Wildlands, Snow and Ice, Ocean and Jungle. The first set premiered in 2018 and has already visited 3 continents. Starting in the Bird's Nest Stadium, Beijing, the models then moved on to the Grimaldi Forum in Monaco before flying across the pond for events at the Dallas Cowboys and Brookfield Zoo, Chicago.

There are now 4 sets of ANIMAL PARADISE and this large set of models is perfect for zoos and large visitor attractions. Our partners use the models to create a trail map around their venue, each model comes with an ID card that can include a question to answer for the trail map.

MODELS





AARDVARK

MODEL STATISTICS

Dimensions: 175 x 46 x 76cm (LxWxH)

Brick Count: 31,787 bricks

Hours to Build: 170

Weight: 146kg



AFRICAN WILD DOG

MODEL STATISTICS

Dimensions: 68 x 42 x 103cm (LxWxH)

Brick Count: 12,871 bricks

Hours to Build: 43.5

Weight: 55.7kg



ALLIGATOR

MODEL STATISTICS

Dimensions: 326 x 78 x 35cm (LxWxH)

Brick Count: 46,240 bricks

Hours to Build: 363.25

Weight: 288kg



ARCTIC FOX

MODEL STATISTICS

Dimensions: 23 x 62 x 36cm (LxWxH)

Brick Count: 8,914 bricks

Hours to Build: 34.25

Weight: 30.5kg



BENGAL TIGER

MODEL STATISTICS

Dimensions: 231 x 131 x 236cm (LxWxH)

Brick Count: 81,350 bricks

Hours to Build: 392

Weight: 520kg



BLUE FIN TUNA

MODEL STATISTICS

Dimensions: 129 x 44 x 46cm (LxWxH)

Brick Count: 7,742 bricks

Hours to Build: 68

Weight: 93.5kg



BROWN BEAR WITH CUB

MODEL STATISTICS

Dimensions: 111 x 125 x 199cm (LxWxH)

Brick Count: 86,668 bricks

Hours to Build: 390

Weight: 357kg

CHINESE GIANT SALAMANDER

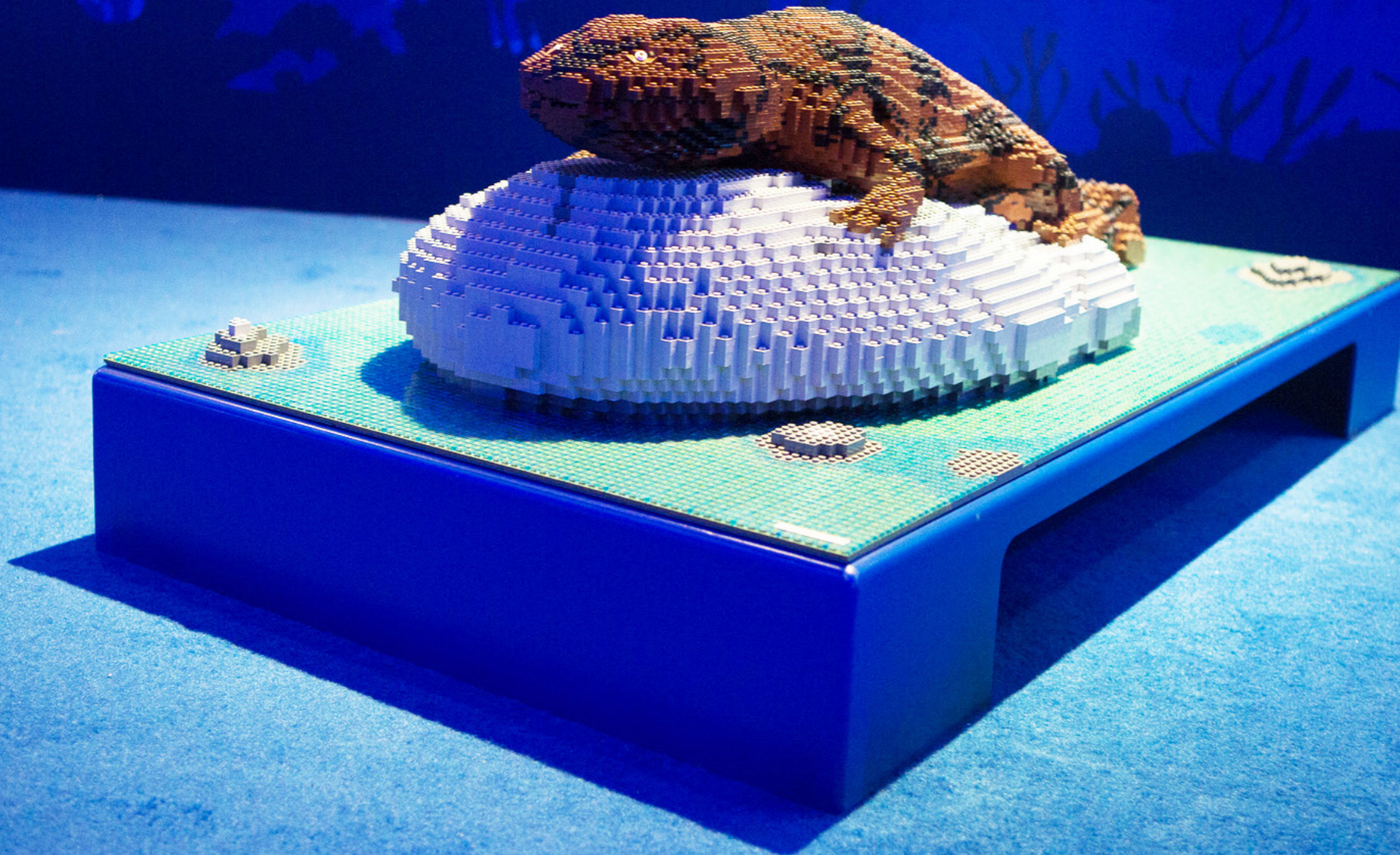
MODEL STATISTICS

Dimensions: 117 x 65 x 31cm (LxWxH)

Brick Count: 19,433 bricks

Hours to Build: 62.75

Weight: 72.5kg





DOLPHIN

MODEL STATISTICS

Dimensions: 126 x 61 x 128cm (LxWxH)

Brick Count: 22,298 bricks

Hours to Build: 101

Weight: 79kg



DUCK-BILLED PLATYPUS

MODEL STATISTICS

Dimensions: 61 x 34 x 18cm (LxWxH)

Brick Count: 6,411 bricks

Hours to Build: 36

Weight: 22.4kg



ELEPHANT

MODEL STATISTICS

Dimensions: 337 x 112 x 225cm (LxWxH)

Brick Count: 149,071 bricks

Hours to Build: 599.75

Weight: 1088.5kg



ELK

MODEL STATISTICS

Dimensions: 165 x 192 x 228cm (LxWxH)

Brick Count: 89,482 bricks

Hours to Build: 637.75

Weight: 448.5kg



EMPEROR PENGUIN

MODEL STATISTICS

Dimensions: 57 x 52 x 118cm (LxWxH)

Brick Count: 22,578 bricks

Hours to Build: 40.5

Weight: 47kg



EMPEROR PENGUIN CHICKS x2

MODEL STATISTICS

Dimensions: 40 x 40 x 35cm (LxWxH)

Brick Count: 1,700 bricks

Hours to Build: 11

Weight: 4.7kg



EXPLORATION VESSEL

MODEL STATISTICS

Dimensions: 323 x 60 x 75cm (LxWxH)

Brick Count: 82,500 bricks

Hours to Build: 54.75

Weight: 180kg



GIANT PANDA

MODEL STATISTICS

Dimensions: 102 x 132 x 132cm (LxWxH)

Brick Count: 62,351 bricks

Hours to Build: 206

Weight: 237.5kg



GIRAFFE

MODEL STATISTICS

Dimensions: 215 x 65 x 175

Height: 175

Weight: 523kg

CLASSIFIED



GORILLA

MODEL STATISTICS

Dimensions: 88 x 96 x 118cm (LxWxH)

Brick Count: 42,659 bricks

Hours to Build: 167

Weight: 158kg



KING COBRA

MODEL STATISTICS

Dimensions: 93 x 74 x 87cm (LxWxH)

Brick Count: 29,003 bricks

Hours to Build: 119.25

Weight: 96.5kg



LEOPARD ON A BRANCH

MODEL STATISTICS

Dimensions: 246 x 68 x 110cm (LxWxH)

Brick Count: 82,253 bricks

Hours to Build: 340

Weight: 335.5kg



LION CUBS

MODEL STATISTICS

Dimensions: 66 x 72 x 51cm (LxWxH)

Brick Count: 25,506 bricks

Hours to Build: 229.25

Weight: 59.5kg



LION

MODEL STATISTICS

Dimensions: 131 x 88 x 135cm (LxWxH)

Brick Count: 50,349 bricks

Hours to Build: 400

Weight: 214kg



MACAWS

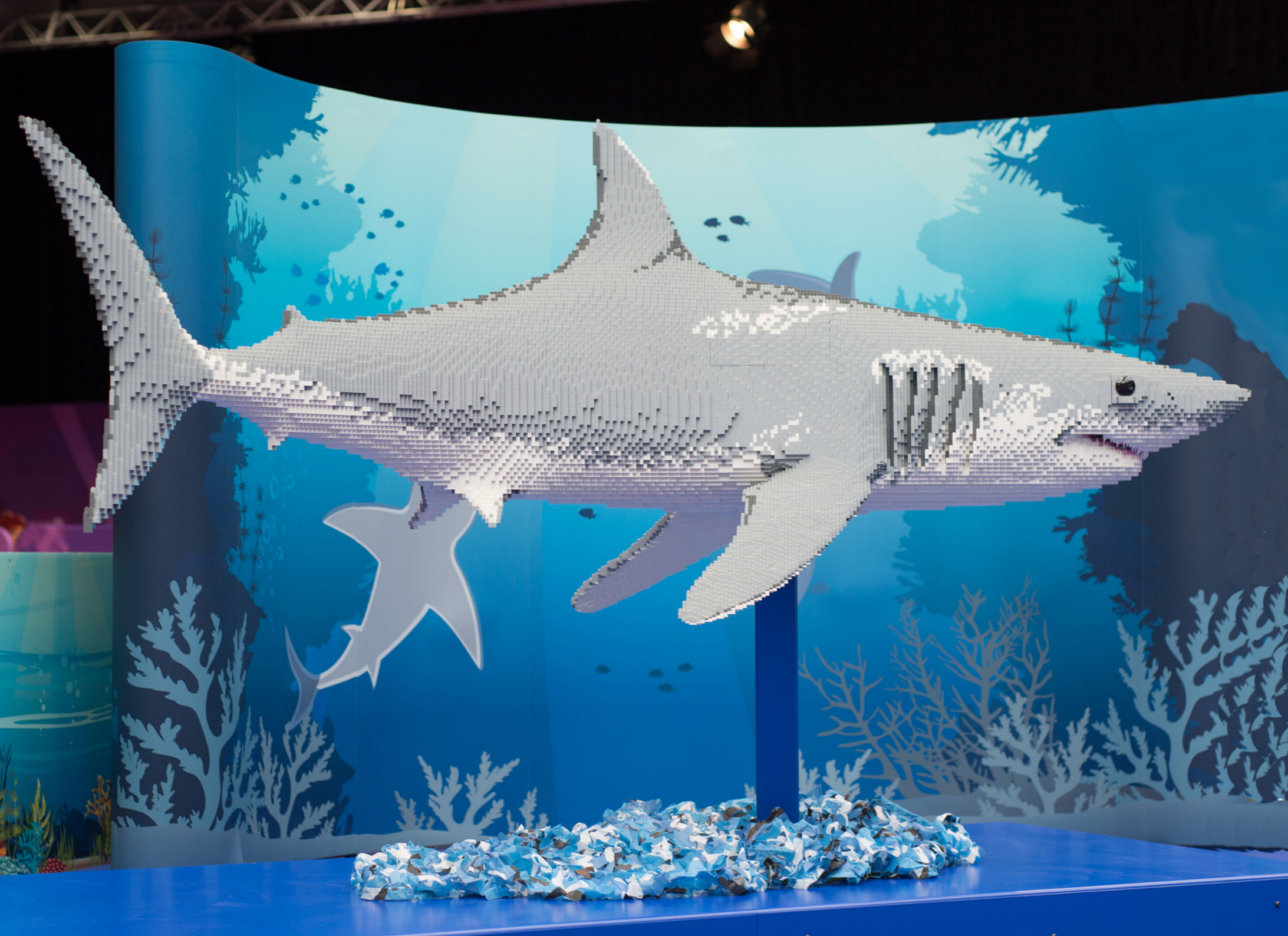
MODEL STATISTICS

Dimensions: 19 x 36 x 83cm (LxWxH)

Brick Count: 7,226 bricks

Hours to Build: 48

Weight: 18.38kg



MAKO SHARK

MODEL STATISTICS

Dimensions: 303 x 138 x 116cm (LxWxH)

Brick Count: 62,553 bricks

Hours to Build: 291

Weight: 530kg



ORANGUTAN

MODEL STATISTICS

Dimensions: 73 x 118 x 165cm (LxWxH)

Brick Count: 49,322 bricks

Hours to Build: 180.5

Weight: 212kg



PANDA CUBS

MODEL STATISTICS

Dimensions: 45 x 84 x 27cm (LxWxH)

Brick Count: 17,083 bricks

Hours to Build: 67.25

Weight: 28.5kg



PANGOLIN

MODEL STATISTICS

Dimensions: 65 x 26 x 20cm (LxWxH)

Brick Count: 1,500 bricks

Hours to Build: 21.5

Weight: 3.75kg



POLAR BEAR

MODEL STATISTICS

Dimensions: 241 x 107 x 139cm (LxWxH)

Brick Count: 100,715 bricks

Hours to Build: 312

Weight: 468kg



RED RUFFED LEMUR

MODEL STATISTICS

Dimensions: 84 x 37 x 48cm (LxWxH)

Brick Count: 10,521 bricks

Hours to Build: 54

Weight: 52.5kg



RHINO

MODEL STATISTICS

Dimensions: 270 x 98 x 170cm (LxWxH)

Brick Count: 92,532 bricks

Hours to Build: 402.75

Weight: 595kg



RING-TAILED LEMUR

MODEL STATISTICS

Dimensions: 72 x 35 x 59cm (LxWxH)

Brick Count: 16,244 bricks

Hours to Build: 5.75

Weight: 26kg



ROCK HOPPER PENGUIN

MODEL STATISTICS

Dimensions: 35 x 27 x 51cm (LxWxH)

Brick Count: 6,816 bricks

Hours to Build: 18

Weight: 11kg



ROCK HOPPER PENGUIN CHICKS x2

MODEL STATISTICS

Dimensions: 28 x 28 x 24cm (LxWxH)

Brick Count: 1,250 bricks

Hours to Build: 7

Weight: 2.3kg



SEA OTTER FAMILY

MODEL STATISTICS

Dimensions: 154 x 120 x 63cm (LxWxH)

Brick Count: 57,409 bricks

Hours to Build: 327.75

Weight: 245kg



SIBERIAN TIGER

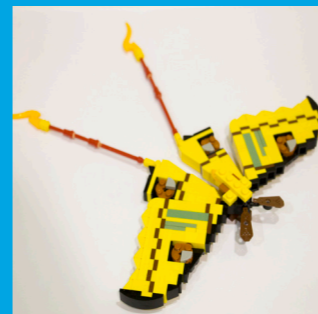
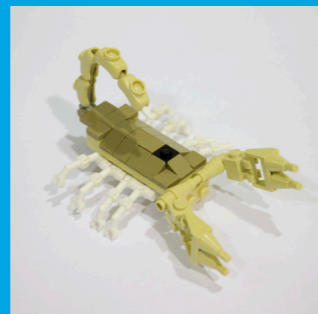
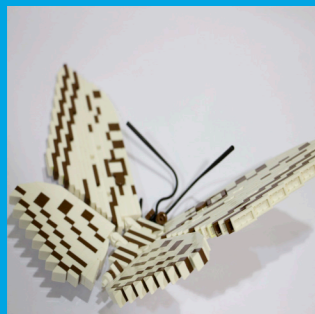
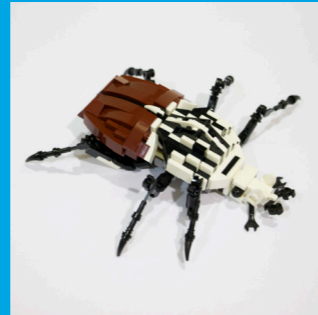
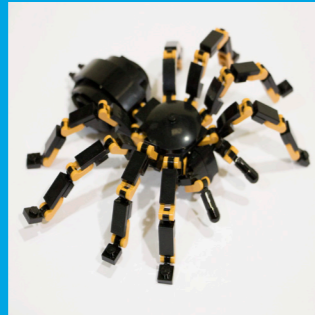
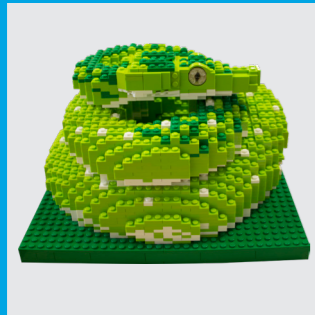
MODEL STATISTICS

Dimensions: 308 x 70 x 124cm (LxWxH)

Brick Count: 67,635 bricks

Hours to Build: 478.25

Weight: 419kg



SMALL JUNGLE ANIMALS

MODEL STATISTICS

Dimensions: VARIOUS

Brick Count: 8,200 bricks (total)

Hours to Build: 75

Weight: VARIOUS



SNOW LEOPARD

MODEL STATISTICS

Dimensions: 66 x 113 x 95cm (LxWxH)

Brick Count: 37,264 bricks

Hours to Build: 101

Weight: 137kg



TASMANIAN DEVIL

MODEL STATISTICS

Dimensions: 76 x 19 x 49cm (LxWxH)

Brick Count: 10,916 bricks

Hours to Build: 50

Weight: 17kg



TIGER CUBS

MODEL STATISTICS

Dimensions: 97 x 130 x 89cm (LxWxH)

Brick Count: 33,954 bricks

Hours to Build: 110.75

Weight: 154kg



TROPICAL FISH DIORAMA

MODEL STATISTICS

Dimensions: 110 x 90 x 34cm (LxWxH)

Brick Count: 11,400 bricks

Hours to Build: 70.75

Weight: 48kg



YELLOW FIN TUNA

MODEL STATISTICS

Dimensions: 110 x 45 x 46cm (LxWxH)

Brick Count: 6,612 bricks

Hours to Build: 60.25

Weight: 88.5kg



INTERACTIVE HEAD-IN HOLE SELFIE ZONE

MODEL STATISTICS

Dimensions: 90 x 192 x 129cm (LxWxH)

Brick Count: 38,400 bricks

Hours to Build: 90.75

Weight: 71.5kg



INTERACTIVE JEEP SELFIE ZONE

MODEL STATISTICS

Dimensions: 140 x 98 x 131cm (LxWxH)

Brick Count: 71,454 bricks

Hours to Build: 248.75

Weight: 258.5kg



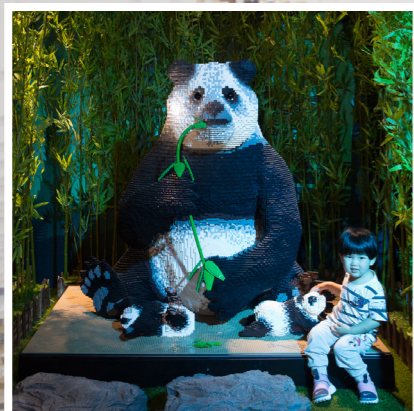
MODEL LIST

	Length (cm)	Width (cm)	Height (cm)	Brick Count
x1 Aardvark	175	46	76	31,787
x1 African Wild Dog	68	42	103	12,871
x1 Alligator	326	78	35	46,240
x1 Arctic Fox	23	62	36	8,914
x1 Bengal Tiger	231	131	236	81,350
x1 Blue Fin Tuna 1	129	44	46	7,742
x1 Blue Fin Tuna 2	129	44	46	7,688
x1 Brown Bear with Cub	111	125	199	86,668
x1 Chinese Giant Salamander	117	65	31	19,433
x1 Dolphin	126	61	128	22,298
x1 Duck-Billed Platypus	61	34	18	6,411
x1 Elephant	337	112	225	149,071
x1 Elk	165	192	228	89,482
x1 Emperor Penguin Adult	57	52	118	22,578
x2 Emperor Penguin Chicks	40	40	35	1,700
x1 Exploration Vessel	323	60	75	10,000
x1 Giant Panda	102	137		10,000
x1 Giraffe	215			10,000
x1 Gorilla	88			10,000
x1 King Cobra	93			10,000
x1 Leopard on a Branch	246			10,000
x1 Lion Cubs	66		51	25,506
x1 Lion	131	60	135	50,349
x1 Macaws	19	36	83	7,226
x1 Mako Shark	303	138	116	62,553
x1 Orangutan	73	118	165	49,322
x1 Panda Cubs	45	84	27	17,083
x1 Pangolin	65	26	20	1,500
x1 Polar Bear	241	107	139	100,715
x1 Red Ruffed Lemur	84	37	48	10,521
x1 Rhino	270	98	170	92,532
x1 Ring-Tailed Lemur	72	35	59	16,244
x1 Rock Hopper Penguin	35	27	51	6,816
x2 Rock Hopper Penguin Chicks	28	28	24	1,250
x1 Sea Otter Family	154	120	63	57,409
x1 Siberian Tiger	308	70	124	67,635
x15 Small Jungle Animals	VARIOUS SIZES			8,200
x1 Snow Leopard	66	113	95	37,264
x1 Tasmanian Devil	76	19	49	10,916
x1 Tiger Cubs	97	130	89	33,954
x1 Tropical Fish Diorama	110	90	34	11,400
x1 Yellow Fin Tuna	110	45	46	6,612
x1 Head-in-the-Hole Selfie Zone	90	192	129	38,400
x1 Jeep Selfie Zone	140	98	131	71,454



CASE STUDIES





BIRDS NEST STADIUM BEIJING

On 7th September 2018 Animal Paradise launched at the famous Birds Nest Stadium in Beijing.

The exhibition was staged in support of Prince Albert's Monaco Foundation to raise public awareness in China about the threatened disappearance of a large number of species.

Visitors experienced life-sized statues depicting the world's most loved and endangered animals, all located in their natural habitats, across four distinct zones.

**BROOKFIELD
ZOO**



BROOKFIELD ZOO CHICAGO

Brookfield Zoo's ANIMAL PARADISE exhibit ran from June through to September 2019 and featured more than 40 life-size animal sculptures, all constructed from millions of individual bricks. Set along a winding wooden pathway on the east side of the park, visitors both young and old were able to explore and get up close with their favourite animals in brick form. A giant panda sitting next to its cubs, an elephant raising its trunk in the air, and an orangutan resting on a tree were just some of the sculptures that could be seen along the way.

"We wanted to bring this here so that people can see world-wide animals and help people realise we can help animals that live a world away, they are literally works of art and they touch us on an emotional level."

Andre Copeland, Interpretive Programs Manager
Brookfield Zoo

CONTACT US

info@bricklivegroup.com



LIVE COMPANY GROUP

