

Han A Ram, *Biblio Vortex*, 2019, Ceramic, 210 cm diameter, Courtesy of Premium Pages Collective

EVENT REPORT

START

SAATCHI GALLERY 26-29 SEPTEMBER 2019



/// Such a wonderful opening night!
A very impressive show and most enjoyable.
The art spoke for itself...fabulous!
JACKIE DE HAVAS, VISITOR



START

SAATCHI GALLERY **26-29 SEPTEMBER 2019**

Sixth Edition, 26-29 September 2019

START returned to London's Saatchi Gallery in September to showcase emerging and established artists from new art scenes providing art collectors and enthusiasts alike the opportunity to discover works from developing global markets.

The fair kicked off London's art season with a glittering opening reception on Wednesday 25 September.

Guests of note who attended the opening included Sir Michael Caine, Denise Welsh, Nadia Sawalha, Kate Thornton, Anthea Turner, Jane Moore, Formula E Chairman Alejandro Agag, Formula E co-founder Alberto Longo together with Ambassadors and cultural attaches including H.E. Enna Park Republic of Korea, H.E. Antonia Jose Ardila, Columbia, H.E. Umit Yalcin, Turkey, H.E. Antonio Manuel R. Lagdameo, Phillipines and H.E. Libor Secka, Czech Republic.

Personalities from the world of fashion and style included the French fashion designer Roland Mouret who partnered with START this year to co-curate a space with Korean Eye curator, START Founder and PCA CEO Serenella Ciclitira.

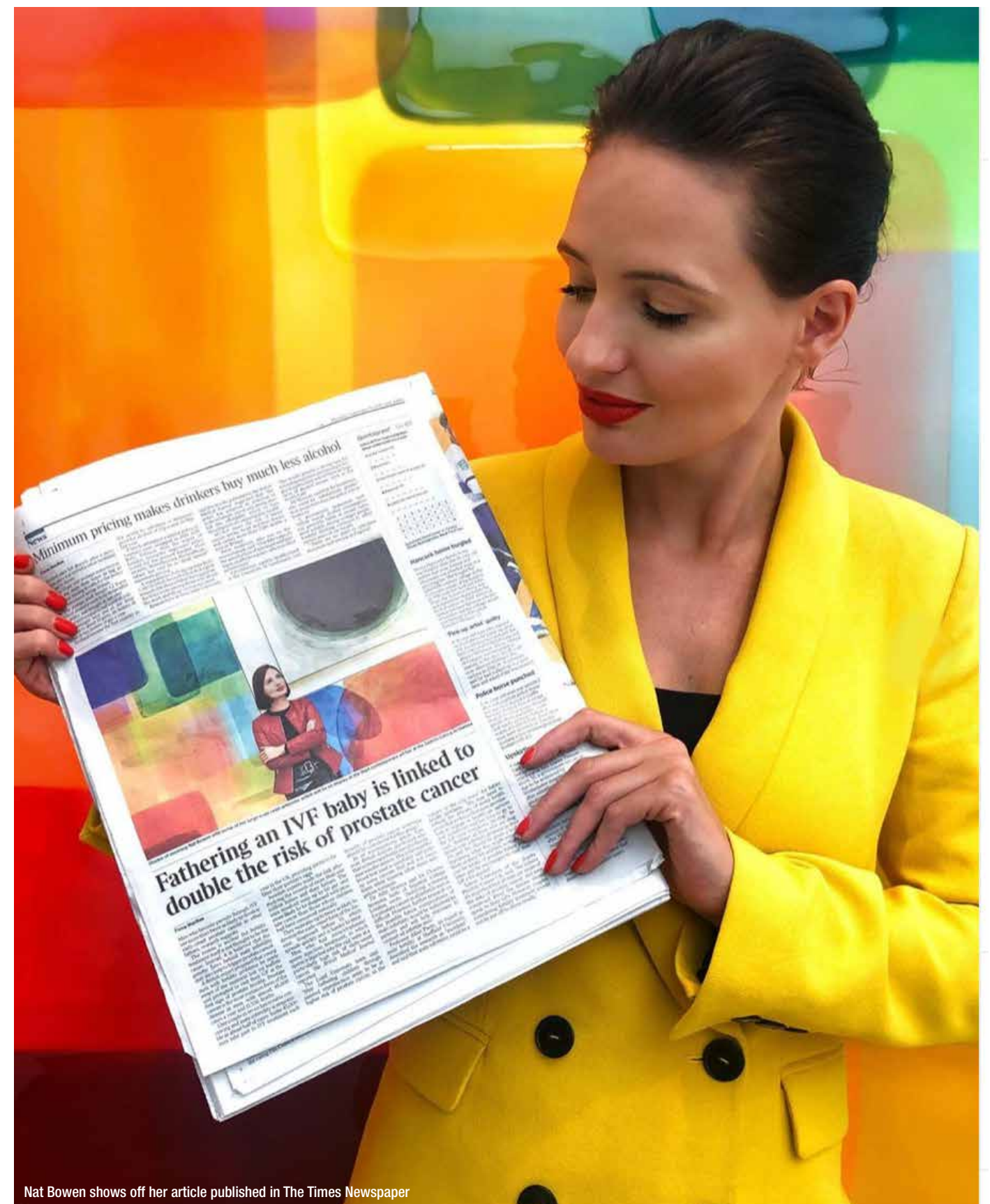
Discover Tomorrow's Art Today

WWW.STARTARTFAIR.COM



Very excited to be part of START and to have sold pieces in advance because of the vibe of the fair.

MARK SLOPER, ILLUMINATI NEON, BOOTH 7.8, FIRST FLOOR



Nat Bowen shows off her article published in The Times Newspaper

CONTENTS

Participating Exhibitors	07	VIP Private View	76
Floor plan	10	Korean Embassy Dinner	90
Exhibitor Installations	12	Collectors' Club Event	94
START Projects	24	Sponsors & Partners	100
Korean Eye 2020 Teaser Exhibition	32	START Catalogue	102
START x Formula E	62	START Website	104
Press Breakfast	68	Press Coverage	108
Art World Forum Conference	72	Social Media	136



START GALLERIES

ACAI Art Gallery / AN INC. / Area35 Art Gallery /
ART LABOR / Baga 06 / Berman Contemporary /
CAIS GALLERY / Eclectic Gallery / Galleri Oxholm /
Gallery Sumukha / Hafez Gallery / IADA /
Illuminati Neon / Jade Flower Gallery / MERKUR
Gallery / ODA I fine art / ONE EAST ASIA /
Premium Pages Collective / SHTAGER GALLERY /
SKIPWITHS / Sladmore Contemporary /
The Dragon Gallery / The gallery STEINER

START SOLO

Aigana Gali / Art Alla Studio / Bihop / Cengiz Yatagan /
EVA / Hana Shahnava / Irena Prochazkova /
Jennifer Morrison / Katya Shkolnik / Lincoln Townley /
Michelle Poonawalla / Ming Lu / NAT BOWEN /
Pedro Merry / PRIYARYAN / RACHAEL BROWN /
Roberto Lombana / Salvatore Battaglia / SARRA BADEL
/ SHEETAL AGARWAL / TANIA NASIR /
Tomonori Nishimura / Tristan Leicester /
Ulla Leigh / Yun Park

START PROJECTS

START x Roland Mouret /
Michelle Poonawalla: Introspection /
The Prince's Foundation School of Traditional Arts:
Fangfang Liu / Philip Colbert / Sandra Cronan /
MOP CAP Winner: Shirin Mohammad, Magic of Persia
Contemporary Art Prize / STARTnet



This was our first year at START and the reception couldn't have been better! It was a wonderful opening evening with a glamorous crowd which was an opportunity to meet marvellous new collectors as well as old friends. //

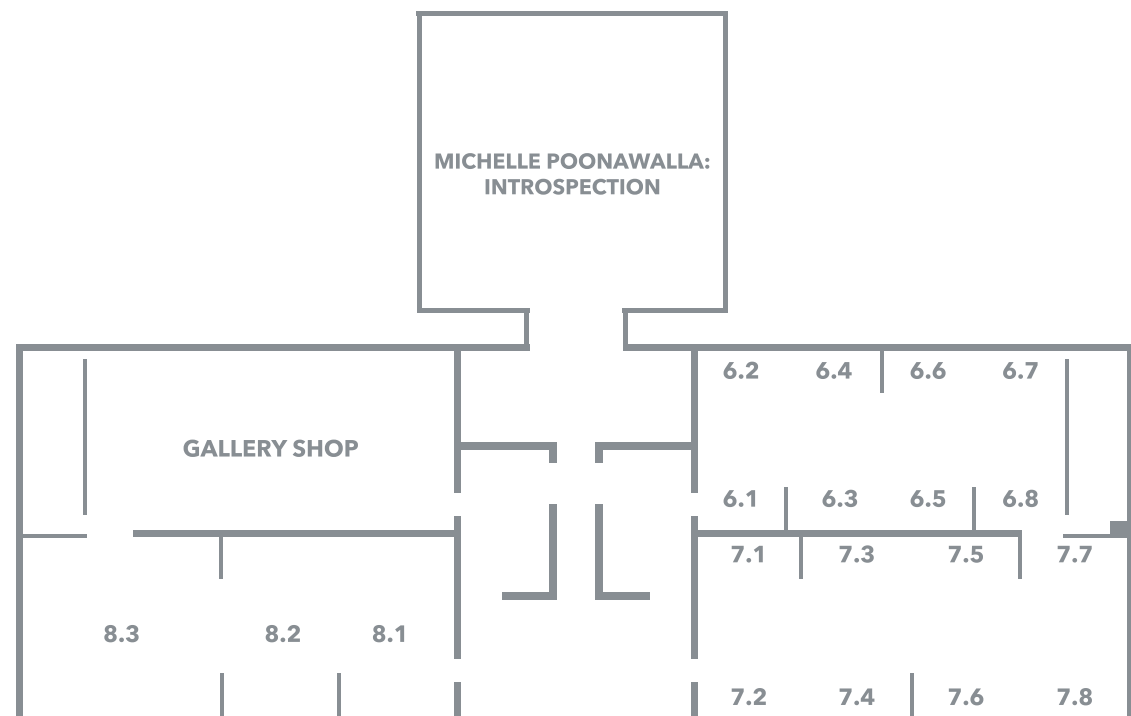
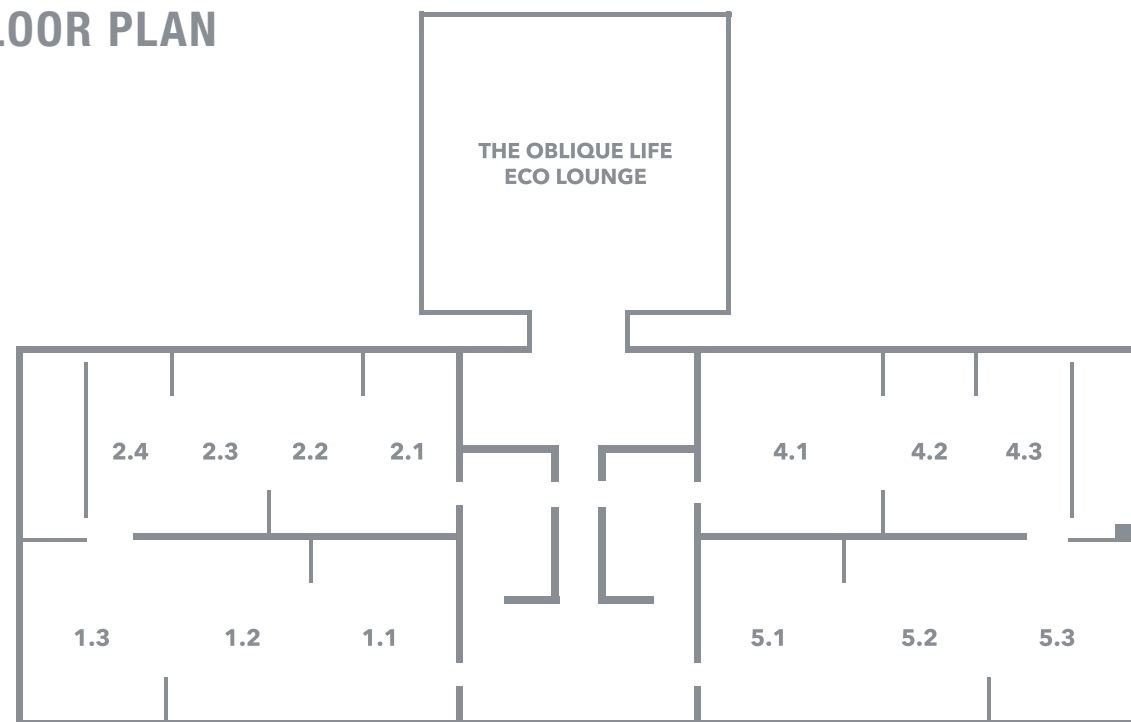
GERRY FARRELL, DIRECTOR OF MAYFAIR GALLERY SLADMORE CONTEMPORARY



// This is my second year showing at START and this year has been excellent. The fair is well organised and nicely put together.

BRITISH ARTIST LINCOLN TOWNLEY

FLOOR PLAN



GROUND FLOOR

- 1.1 SKIPWITHS
- 1.2 CAIS GALLERY
- 1.3 Galleri Oxholm
- 2.1 Sladmore Contemporary
- 2.2 Hafez Gallery
- 2.3 Pedro Merry
- 2.4 Jade Flower Gallery
- 3.0 The Oblique Life Eco Lounge
- 4.1 START x Roland Mouret
- 4.2 BiHop
- 4.3 Katya Shkolnik
- 5.1 ONE EAST ASIA
- 5.2 Lincoln Townley
- 5.3 Aigana Gali

FIRST FLOOR

- 6.1 Jennifer Morrison
- 6.2 Tomonori Nishimura
- 6.3 Gallery Sumukha
- 6.4 Area35 Art Gallery
- 6.5 SHEETAL AGARWAL
- 6.6 NAT BOWEN
- 6.7 ACAI Art Gallery
- 6.8 Tristan Leicester
- 7.1 ART LABOR
- 7.2 AN INC.
- 7.3 Cengiz Yatağan
- 7.4 Ming Lu
- 7.5 Ulla Leigh
- 7.6 MERKUR Gallery
- 7.7 SARRA BADEL
- 7.8 Illuminati Neon
- 8.1 SHTAGER GALLERY
- 8.2 ODA | fine art
- 8.3 Philip Colbert
- 9.0 Gallery Shop
- 10.0 Michelle Poonawalla: Introspection

SECOND FLOOR

- 11.1 STARTnet
- 11.2 The Dragon Gallery
- 11.3 Berman Contemporary
- 11.4 The gallery STEINER
- 12.1 Roberto Lombana
- 12.2 TANIA NASIR
- 12.3 PRIYARYAN
- 12.4 EVA
- 12.5 RACHAEL BROWN
- 12.6 Yun Park
- 12.7 Eclectic Gallery
- 12.8 The gallery STEINER
- 13.1 Salvatore Battaglia
- 13.2 Sandra Cronan
- 13.3 Art Alla Studio
- 13.4 Premium Pages Collective
- 13.5 Prince's Foundation School of
Traditional Arts: Fangfang Liu
- 13.6 Irena Prochazkova
- 13.7 IADA and ai projects
- 13.8 Baga 06
- 14.0 Korean Eye 2020 Teaser Exhibition
- 15.0 Hana Shahnava
- 16.0 Michelle Poonawalla

On 25th September the
START 2019
Private View was attended by
a staggering

3,504
VIP GUESTS

and over the 4 days
11,425
VISITORS
enjoyed the fair





1.1 SKIPWITHS



2.4 Jade Flower Gallery



1.3 Oxholm Galleri



2.3 Pedro Merry



2.1 Sladmore Contemporary



5.3 Aigana Gali



4.3 Katya Shkolnik



5.2 Lincoln Townley



5.1 ONE EAST ASIA



2.2 Hafez Gallery



8.1 SHTAGER GALLERY



7.4 Ming Lu



8.2 ODA | Fine Art



7.3 Cengiz Yatagan



8.1 Philip Colbert



7.6 MERKUR Gallery



8.1 SARRA BADEL



6.4 Area 35 Art Gallery



6.7 ACAI Art Gallery



6.1 Jennifer Morrison



6.6 NAT BOWEN



6.5 SHEETAL AGARWAL



Introspection

Michelle Poonawalla

How do we make sense of the barrage of images of violence and displacement that we are confronted with in endless news cycles? Have our senses been numbed to the extent that we unflinchingly move past these images? These are some of the questions out of which *Introspection* was born.

With this multi-media installation, Michelle Poonawalla has turned to sound, using a combination of audio clips from the news and ambient sounds to create an immersive experience. The journey through this artwork ends in a moment of catharsis – a deep exhale, as the intensity of sounds erupt into a fiery, lava-rain that gradually turns serene with a cacophony of ephemeral butterflies. The installation hopes to create a moment of pause, reminding us, the viewers, of our role towards humanity.

Gallery 10, Michelle Poonawalla: Introspection

FIRST FLOOR



13.8 Baga 06



13.4 Premium Pages Collective

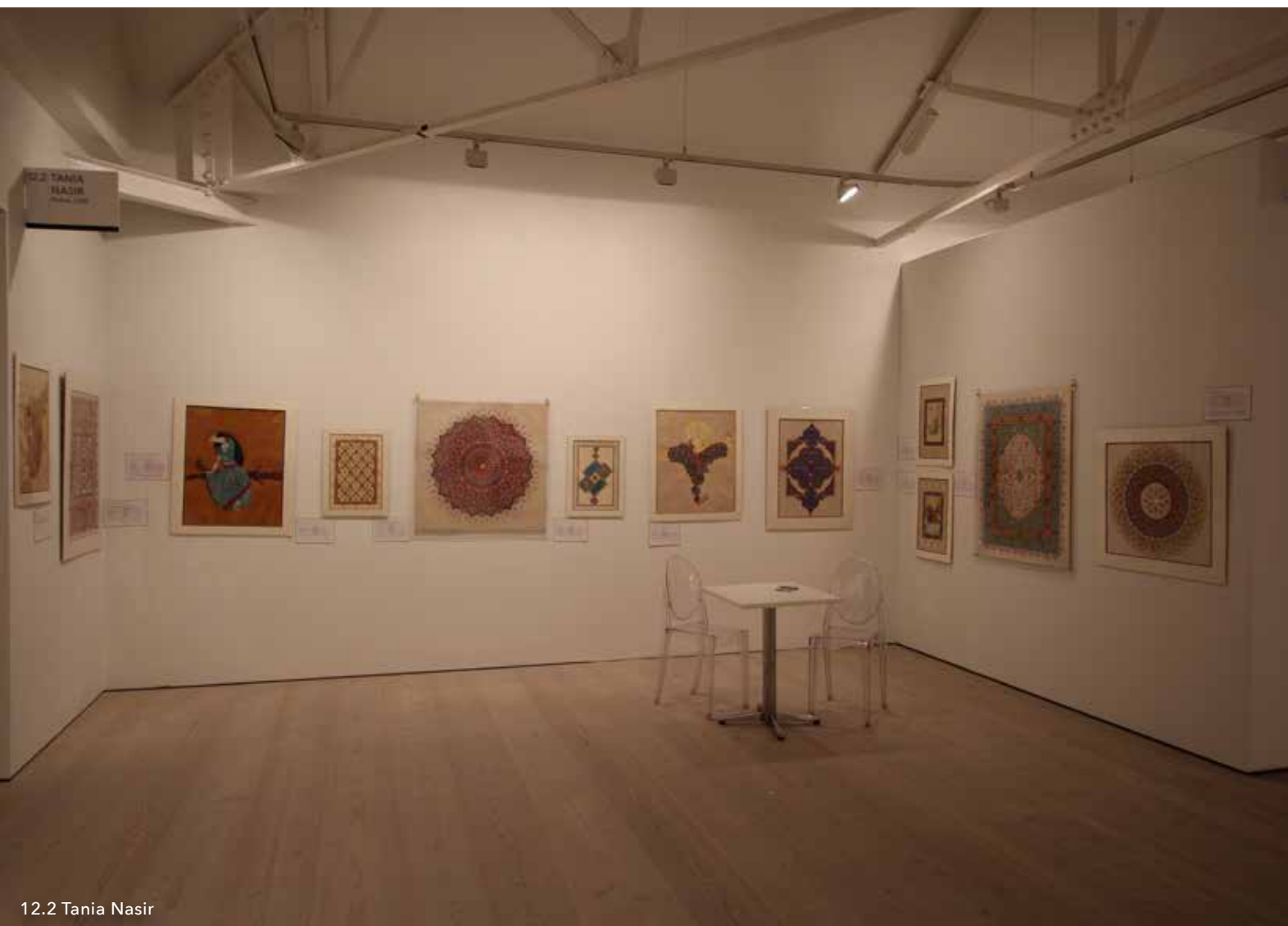
SECOND FLOOR



13.1 Salvatore Battaglia



13.1 Roberto Lombana



12.2 Tania Nasir



12.2 The Dragon Gallery



11.4 the Gallery Steiner

START PROJECTS

In compliment to START's ethos of presenting up and coming artists and galleries are a series of curated projects that reflect the fair's global agenda and reputation for combining credible and critically acclaimed exhibition projects alongside the gallery and artists exhibiting. The aim is always to offer our audience an alternative and engaging art fair experience and to provide artists with a dynamic platform, to generate stimulating dialogues with other artists and new audiences.

START Projects 2019 included:

START x Roland Mouret

Michelle Poonawalla: Introspection

Philip Colbert

The Prince's Foundation School of Traditional Arts: Fangfang Liu

Sandra Cronan

Magic of Persia Contemporary Art Prize: Shirin Mohammad

STARTnet



PHILIP COLBERT

FIRST FLOOR, 8.3



**// This room is so Korean, that's what I love about it. It's the materials.
Nobody is as innovative with the use of materials as they are there.**

SERENELLA CICLITIRA, FOUNDER OF GLOBAL EYE PROGRAMME





MICHELLE POONAWALLA



Michelle Poonawalla, Freedom, 2019, Acrylic on canvas with projection mapping, 106 x 198 cm





KOREAN EYE 2020 TEASER EXHIBITION

Parallel Contemporary Art and the Global Eye Programme are proud to present the Korean Eye 2020 Teaser Exhibition during the esteemed START Art Fair 2019 at Saatchi Gallery in London, sponsored by KEB Hana Bank.

Expected to become one of the largest Korean contemporary art exhibitions to date, the new iteration of Korean Eye 2020 marks the 10th anniversary of the Global Eye Programme, an initiative by co-founders David and Serenella Ciclitira, that nurtures Asian artistic talent and aims to build networks and opportunities for artists and galleries. Entitled 'Korean Eye 2020: Contemporary Korean Art', the exhibition will take place across three global locations: The State Hermitage Museum in St. Petersburg (Spring 2020), Saatchi Gallery in London (Summer 2020) and finally in Seoul (Autumn 2020).

In order to provide a glimpse to the touring exhibition, the Korean Eye 2020 Teaser exhibition included an eclectic mix of artists of Korean cultural heritage. Some living and working exclusively in South Korea, others traveling between South Korea and Europe, this mix highlights the subsequent influences to their artistic methods. The teaser exhibition showcased a wide variety from paintings on silk and traditional Korean fabric to photography to sculpture to light installations and performance art, which synthesizes the multifaceted nature of South Korean identities and triggers a consideration of the nation's artistic spirit, regardless of geographic location.

A special collaboration project by Korean artists Hyojin Park and Meekyoung Shin with French designer Roland Mouret especially highlights the creativity of material expression, so characteristic of Korean contemporary art. The project was co-curated by Serenella Ciclitira with Roland Mouret.

KOREAN EYE 2020 TEASER ARTISTS INCLUDED:

Cha Jongrye, Da In Park, Doo Hwa Chung, Doowon, Eemyung Kang, Hayoung Kim, Helena Parada Kim, Hun Kyu Kim, Kim Bumsu, Kim Jae Il, Lee Jeonglok, Soowhan Choi, and Yun Hee Toh.



Journalist Nana Lee interviews Serenella Ciclitira (Founder & CEO, START)



Helena Parada Kim (Artist) poses in front of her artwork



Official Ribbon Cutting and Opening of Korean Eye 2020 Teaser Exhibition



Da In Park (Live performance)



Chan Beom Park, General Manager, KEB Hana Bank UK and Hosik Nam, Deputy General Manager, KEB Hana Bank UK



// We are tremendously excited to be staging Korean Eye 2020. It is ten years since the inaugural Korean Eye, and we are proud to have been part of the Korean wave that brought, K-Pop and K-Cinema to the world. //

DAVID CICLITIRA, FOUNDER OF GLOBAL EYE PROGRAMME





/// The Korean Eye 2020 teaser gives an insight into the most exciting contemporary Korean artists. ///

UNITED DAILY NEWS



// Contemporary art is thriving in South Korea...but artists rarely get to showcase their work in big overseas exhibitions. Korean Eye 2020 fills that gap. //



Busy crowds gather to enter the exhibition



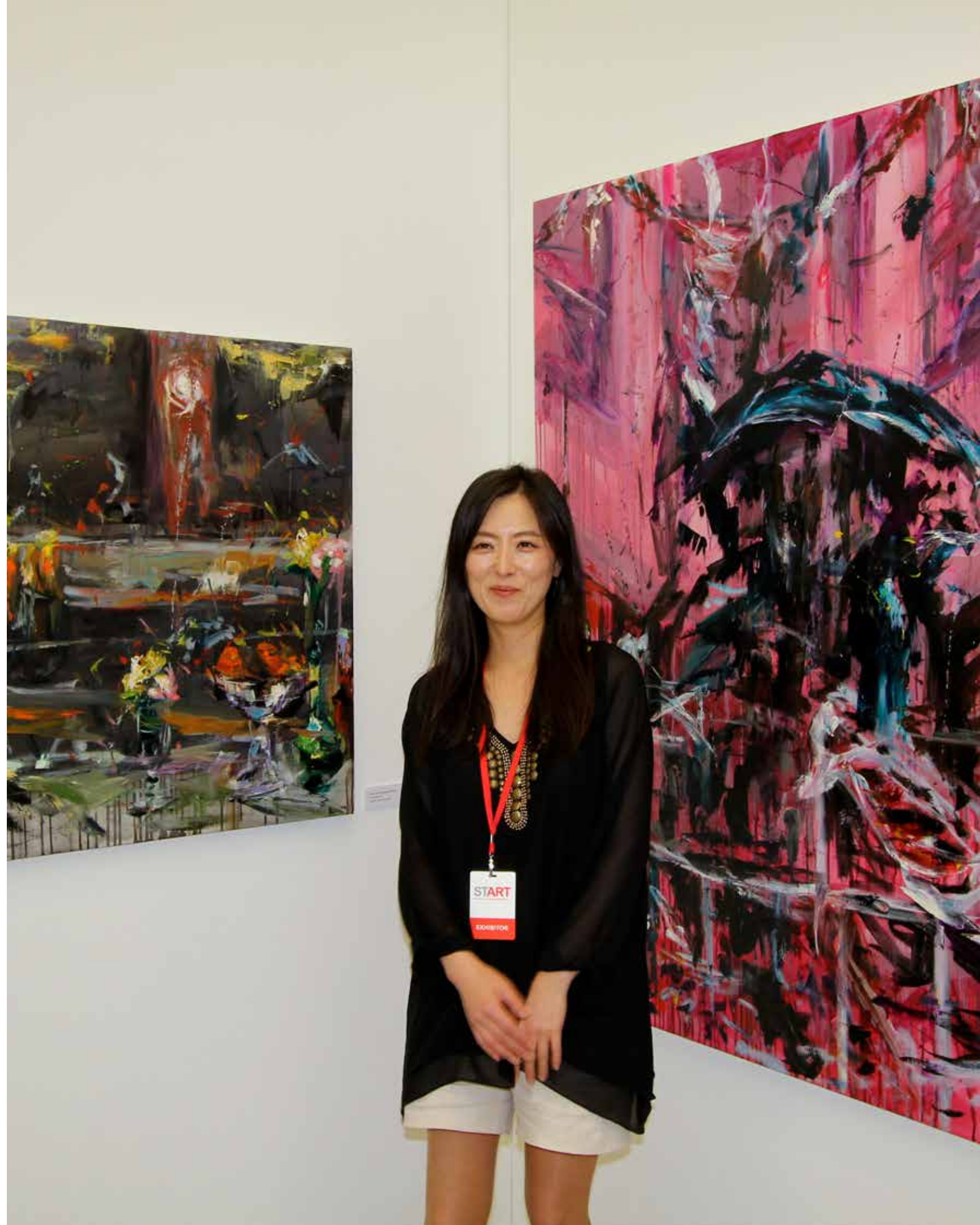
Chan Beom Park, General Manager, KEB Hana Bank UK and Philly Adams (Director, Saatchi Gallery)



KOREAN SHOWCASE

In-line with Korean Eye's mission to promote and expose emerging artists outside of their home countries on a global platform, exhibitors at START Art Fair 2019 included some of Korea's most exciting galleries and artists; ARTWA, An INC, BiHop, CAIS, Doo Wha Chung, Jade Flower Gallery, Kim Jae Il and Yun Park.















ERIKA NAVAS
The Gallery
STEINER



ERIKA NAVAS



START X FORMULA E

Inside the START x The Oblique Life Eco Lounge visitors discovered START x Formula E, a full size Gen2 race car in Union Flag livery and an incredible wall mounted installation by Korean artist Doowon in celebration of the recently announced inaugural FE Seoul race taking place in May 2020 and new London race in July 2020.



Pedro Merry, (Head of Legal, Formula E), Alejandro Agag (Chairman, Formula E), Albert Longo (Co-Founder, Formula E) and Simon Freer (Chairman, Formula E)



/// The inclusion in Korean Eye 2020 of self-trained artist Doowon's bold and vibrant mixed media works exemplify the Global Eye Programme's aim to showcase works by emerging artists. Korean Eye 2020 is the first time the artist's work has been exhibited outside Korea. ///



ABB FORMULA E
FORMULA E COMPETITION

Formula E is the fastest and most intense racing series on the planet. We bring electrifying racing to the streets of some of the world's most progressive cities, across four continents. Watch the most competitive line up in motorsport battle it out in a bid to be crowned champion.

GEN2 CAR	
POWER	250KW
TOP SPEED	250km/h
ACCELERATION	0-100km/h in 2.8 seconds

For the 2019/20 season, Formula E will see some of the world's leading brands in motorsport and the automotive industry going wheel-to-wheel. This season Mercedes-Benz and Porsche will be joining the likes of Audi, BMW, Jaguar and Nissan. In addition to this we're launching two new races: The Seoul E-Prix in South Korea on May 3, 2020 and the season finale double-header which will take place in the historical heartland of East London's docklands at ExCeL. London. Witness the crowning of a champion in the heart of the UK capital on July 25th.

Follow the ABB FIA Championship at www.formulae.com
#ABBFormulaE

Chan Beom Park, General Manager, KEB Hana Bank UK poses next to the full size Formula E Gen2 Race Car



Pedro Merry, (Head of Legal, Formula E) and Albert Longo (Co-Founder, Formula E) put red stickers on sold artworks





PRESS BREAKFAST

Members of the international and local press attended the press event on Wednesday 25 September hosted by START Founder David Ciclitira. Fair Director Grey Skipwith led a tour of the fair and the Korean Eye 2020 Teaser exhibition was officially opened by H.E. Ms Enna Park, Republic of Korea Ambassador to the United Kingdom.



David Ciclitira and Sungho Min, Head of Press Office, Embassy of Republic of Korea discuss Korean Eye with journalists



Serenella Ciclitira (Founder & CEO, START) talks to the press



With a long history of fine art tradition, contemporary Korean artists are fast reaching international audiences through film, pop culture, fine art and new technologies. Big changes on a global scale bridge divides with art, music and technology uniting the younger generations with a new appetite and diversity. Saatchi Gallery are excited and honoured to present Korean Eye 2020, the new voices of contemporary Korea, at the Saatchi Gallery, London.

PHILLY ADAMS, DIRECTOR SAATCHI GALLERY



AWF CONFERENCE

On Thursday 26 September Art World Forum presented their second annual half-day conference at START. This year's theme was "The Bigger Picture", the 300 strong audience were welcomed by AWF Founder Anni Oates and START Founder David Ciclitira. A meticulously curated discussion programme featuring exhibiting artists and art-world figures including DSL Collection Founder Sylvain Levy, V&A Curator Rory Hyde and START Fair Director Grey Skipwith quickly became a highlight of the fair's events programme.

Sylvain Levy (Collector & Founder, DSL Collection)

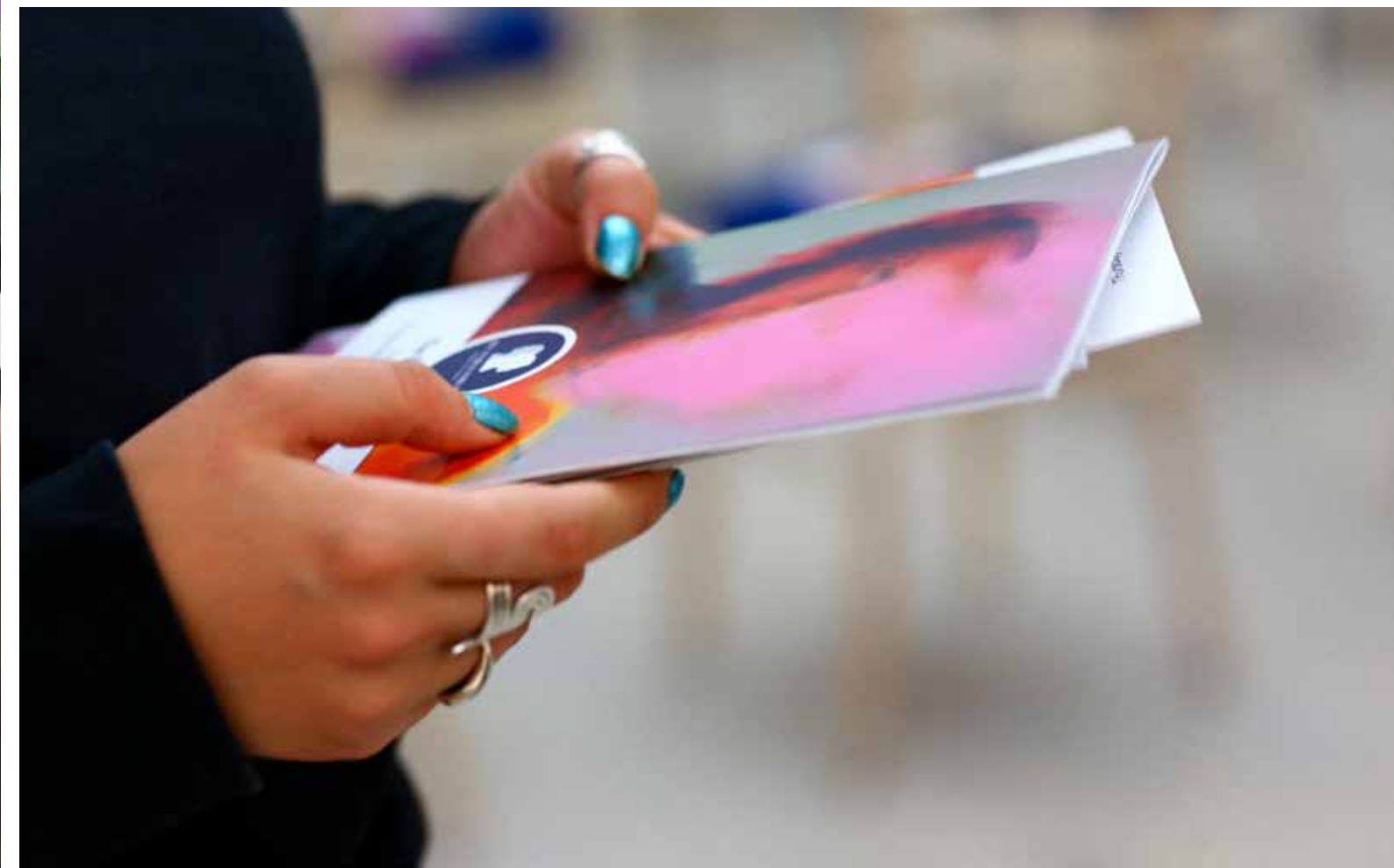
Grey Skipwith (START Fair Director) and Lincoln Townley (Artist)



Nat Bowen (Artist)



Wilhemina Madeley (Acute Art) and Rory Blain (Sediton Art)





Sir Michael Caine and David Ciclitira (Founder, START)



VIP PRIVATEVIEW

Guests of note who attended the opening included Sir Michael Caine, Denise Welsh, Nadia Sawalha, Kate Thornton, Anthea Turner, Jane Moore Formula E Chairman Alejandro Agag, Formula E co-founder Alberto Longo together with Ambassadors and cultural attaches including H.E. Enna Park Republic of Korea, H.E. Antonia Jose Ardila, Columbia, H.E. Umit Yalcin, Turkey, H.E. Antonio Manuel R. Lagdameo, Philippines and H.E. Libor Secka, Czech Republic.



Nikki Caine, Lincoln Townley and Denise Welsh share a selfie!



LOVING LIFE

DENISE SEEMED IN PARTICULARLY GOOD SPIRITS AT THE BASH AS SHE LARKED AROUND POSING FOR SNAPS ALONGSIDE SOME OF HER LOOSE WOMEN CO-STARS. **///**

David Ciclitira (Founder, START) and Anthea Turner







PEDRO MERRY, (HEAD OF LEGAL, FORMULA E) AND ALBERT LONGO (CO-FOUNDER, FORMULA E) PUT RED STICKERS ON SOLD ARTWORKS



Michelle Poonawalla



Kate Thornton



DJ Brydie



Connie Baxendale, Jenny Powell (TV Presenter), Andrew Downs (James English Productions Ltd) and Arabella Cant (Twenty6 Magazine, Cultural Editor at Large)



Artists and collectors at the VIP Private view



Simon Freer (Chairman, Formula E), Pedro Merry (Head of Legal, Formula-E) and David Ciclitira (Founder, START)



Diego Phillips Live Performance



Philip Colbert (Artist) & Phily Adams (Director, Saatchi Gallery) with two VIP Guests



KOREAN EMBASSY DINNER

On the eve of the opening of the Korean Eye 2020 teaser exhibition at START, Republic of Korea Ambassador to the United Kingdom H.E. Ms Enna Park, hosted an intimate dinner at her London residence.



H.E. Ms Enna Park (ROK Ambassador to UK) and Meekyoung Shin (Artist)



Helena Parada Kim (Artist) and H.E. Ms Enna Park (ROK Ambassador to UK)



Sungho Min, Head of Press Office, Embassy of Republic of Korea and Hosik Nam, Deputy General Manager, KEB Hana Bank UK



Mark Langthorne (CEO, Roland Mouret) and Justine Rouch (President, Roland Mouret)



Hosik Nam, Deputy General Manager, KEB Hana Bank UK meets Serenella Ciclitira



H.E. Ms Enna Park (ROK Ambassador to UK), Serenella Ciclitira and Philly Adams (Director, Saatchi Gallery)



Hyojin Park gives an artwork to H.E. Ms Enna Park (ROK Ambassador to UK)



COLLECTORS CLUB EVENT

On Friday 27 September, START Founders David and Serenella Ciclitira hosted a collectors' dinner. The VIP guests were led on a tour of START by Fair Director Grey Skipwith, after which they enjoyed drinks in the START lounge with artists and exhibitors before enjoying a private dinner at the Gallery Mess restaurant adjacent to Saatchi Gallery.



Dong-Wook Kim, Doowon (Artist), Stephan Korte, Dong-Hyung Kim, Jason Lee



Sonia Hong, Dana Diaconu, Jeana Pak and Shana Hong in the Oblique Life VIP Lounge

Michelle Poonawalla (Artist) and Anthea Turner (Far right) at the Collectors Club Event



Pre dinner tour of Korean Eye Teaser Exhibition





David Ciclitira (Founder, START), Fiona Cowan, Irving Blum, Jackie Blum and Serenella Ciclitira (Founder & CEO,

START

SAATCHI GALLERY 26-29 SEPTEMBER 2019

START would like to thank the following partners and sponsors for their support



SAATCHI GALLERY



SCHOOL OF TRADITIONAL ARTS



Embassy of the Republic of Korea in the United Kingdom

ROLAND MOURET



THE OBLIQUE LIFE



MY CHELSEA



SPONSORS & PARTNERS

As always START thanks all its partners and sponsors who help to make the annual event stand out in the crowded world of art fairs.



Illy Café Ape Truck



Formula E, Full Size Gen 2 Race Car



The Oblique Life Bar and Lounge



Drinks Menu and START Fair Brochure





START Catalogue for sale in the Gallery Shop

START CATALOGUE

The START 2019 Catalogue included four pages on each participating gallery or self-representing artist and provided information and contact details for each together with details of the artworks featured for sale at the fair.



70 Illuminati Neon

Illuminati Neon
London Calling, 2019
Neon on vintage
WW2 flag
145 x 75 cm

Illuminati Neon
God save the Queen,
2019
Hand painted
queen & neon
136 x 85 cm

Illuminati Neon
God save the Queen,
2018
Red neon on
painted wood
147 x 136 cm

Illuminati Neon
Queen in residence,
2019
Neon on vintage flag
100 x 80 cm

Illuminati Neon
Bet you look good,
2019
Neon on glitter board
110 x 90 cm

Illuminati Neon
Anarchy, 2019
Neon on vintage flag
70 x 45 cm



Illuminati Neon 71

The gallery STEINER

Vienna, Austria

Kurrentgasse 4/1, 1010 Vienna, Austria
Phone +43 660 712 28 17
www.gallery-steiner.com
office@gallery-steiner.com

Directors
Corinna Steiner & Dominic Steiner
Established 2008

Artists Featured
Samir Sammoun (Lebanon)
Erika Navas (Mexico)

The gallery STEINER is a modern art gallery in the heart of Vienna. Located at Kurrentgasse, one of the most prestigious locations in the city, the family-owned institution founded by Michelle Steiner, Corinna Steiner, and Dominic Steiner embodies their mission to represent professionalism, modernity, diversity and internationalism.

Since its foundation in June 2008, the gallery has established itself as a meeting point for qualified art collectors and a hub for internationally recognised and emerging artists.

The gallery STEINER only represents living artists from Europe, Asia, Australia and North America, who are exhibited regularly in group and solo shows at its premises in Vienna as well as at international art shows.

START 2019 marks the very first time the gallery's exclusive artists Samir Sammoun and Erika Navas will exhibit in London.

Samir Sammoun
Sunrise on the Beach, 2015
Oil on linen canvas
119 x 102 cm

108 The gallery STEINER



The gallery STEINER 109

START x Roland Mouret, Meekyoung Shin

Seoul, South Korea

Meekyoung Shin (b.1947) South Korea, completed her BFA and MFA at Seoul National University. In 1995, she moved to London to obtain her MFA at the Slade School of Art, University College London (1998) and Royal College of Art(2017).

Based in both London and Seoul Meekyoung is internationally renowned for her sculptures that probe the mis- and re-translations that often emerge when objects of distinct cultural and historical specificity are dislocated from their origins. Made from soap, her work replicates artefacts and works of art, from Asian porcelain vases to Greek and Roman sculptures, translating between continents, cultures and centuries in the process.

Meekyoung's focus of work was on the concept of 'Translation' something that grew following her re-location to London where the distinct cultural differences between western society and Korea were highlighted. This prompted Meekyoung to consider, in the development of her work, the importance of shifting localities and cultural understanding. She applied this thinking to museums and museum collections, and what this meant for the cultural objects contained within them focusing on objects that have been relocated from one society and culture to another. Working with a stately home in the UK is a natural extension of her thinking and offers new opportunities where status and class is as much a feature as the fixtures, fittings and artworks.

Meekyoung uses soap as her material of choice, a low cost, transient material that has many properties including the ability to erode and show the passage of time. Her interpretation in soap of classical sculpture and import porcelain from the sixteenth century has raised the question of value and permanence. In 2012 Meekyoung completed her largest commission to date, 'Woman in Soap' a sculpture of the Duke of Cumberland on a horse, this plinth project currently stands in Cavendish Square in central London.

Her work neatly straddles the divide between craft and conceptual art; her exquisite craftsmanship is evident throughout her work, which is equally as popular with critics and the public alike. She was shortlisted for the significant Korean Artists Prize 2013, which celebrates and supports talented artists that have made significant contributions to the advancement of Korean art.

Meekyoung Shin
Translation-vase series, 2012
Saatchi Gallery, London

250 START x Roland Mouret, Meekyoung Shin



START x Roland Mouret, Meekyoung Shin 251

All visitors were provided with a comprehensive 12 page fair brochure highlighting a selection of 2019's exhibitors, projects, partners and sponsors. Also included in the brochure was a complete events schedule and on the reverse the full floor plan.



START

The grid contains the following artworks:

- Row 1:**
 - Abstract painting with red, black, and white, featuring a central figure.
 - Abstract painting with a blue silhouette against a red and orange background.
 - Abstract painting with a colorful, heart-shaped composition.
- Row 2:**
 - Abstract painting with pink, purple, and white floral motifs.
 - Abstract painting with a yellow background and black and blue butterfly silhouettes.
 - Abstract painting of a white bear wearing a colorful floral collar.
- Row 3:**
 - Abstract painting of a woman's face with dark hair against a blue background.
 - Abstract painting of a gorilla's face.
 - Abstract painting of a colorful, stylized face or mask.

START focuses on emerging artists and new art scenes. Inside this brochure you will find highlights of the fair, The Oblique Life Eco Lounge events schedule and a plan of where to find all our amazing exhibitors across all three floors of Saatchi Gallery. With prices that range from £100 to £80,000 the fair has something for everyone, from seasoned collectors through to those looking to buy their first piece of art. Enjoy the fair!

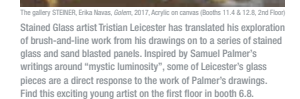


This eclectic mix of artists are all of Korean cultural heritage, some living and working exclusively in South Korea, and others travelling between their studios in South Korea and Europe. This mix highlights the growing importance of Korean contemporary art and the European influence on those artists living abroad. Local cultural influences have largely shaped their art practice, some reflect how they have negotiated and responded to changes in the international art scene, ultimately emphasising the interplay between various cultural worlds. From paintings on silk and traditional Korean fabric to photography to sculpture to light installations and performance, artists included in this exhibition have employed a wide array of artistic methods in their practice, which synthesises the multifaceted nature of South Korean identities and triggers a consideration of the nation's artistic spirit regardless of geographic location.

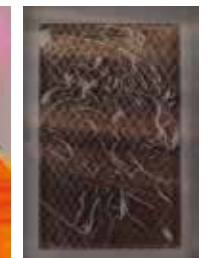


KOREAN EYE 2020
GALLERY 14 SECOND FLOOR

START Art Fair 2019 received an overwhelming volume of top quality artist and gallery applications from all around the globe, our only regret this year is not to have been able to offer all of them space to exhibit. Some of the team's personal highlights include: The gallery STEINER who embodies START's ethos of supporting emerging artists by occupying not one but two top-floor gallery spaces, in 11.4 they will present Samir Sammour and in 12.8 Erika Navas. Two artists who have never been shown in London before.



On the ground floor in 4.3 former nuclear physicist Katya Schlönk uses the medium of photography, manipulating the information collected by the matrix of a digital camera to demonstrate a different projection of any given subject in attempt to expose its essence. On the second floor in both 12.1 find Colombian artist Roberto Lombana whose photographic work is executed with a creative use of fish-eye lenses. And in the SALON on the Lower Ground floor MOP CAP winner Shirin Mohammad presents a multi-media installation that immerses the viewer.



GALLERY 3, GROUND FLOOR

Wednesday 25 September
 5:00 - 6:00pm DJ Brydile
 6:00 - 7:00pm Live Music: Diego Phillips
 7:00 - 8:00pm DJ Brydile
 8:00 - 9:00pm Live Music: Ben Joseph & The Laylows
 9:00 - 10:00pm DJ Brydile

Thursday 26 September
 4:00 - 5:00pm DJ Brydile
 5:00 - 5:30pm Live Music: Marcel
 5:45 - 6:15pm Live Music: Vincsat
 6:30 - 7:00pm Live Music: The fortySix
 7:00 - 8:00pm DJ Brydile
 7:30 - 8:00pm Live Music: The fortySix

Friday 27 September
 12:00 - 12:30pm Cocktail Masterclass with FAIR.
 2:00 - 2:30pm Cocktail Masterclass with FAIR.
 3:00 - 6:00pm DJ Brydile

Saturday 28 September
 12:00 - 12:30pm Cocktail Masterclass with FAIR.
 1:00 - 1:30pm Cocktail Masterclass with FAIR.
 2:00 - 5:00pm DJ Brydile



**Korean Eye 2020,
GALLERY 14, 2ND FLOOR**

Wednesday 25 September
10:15am Performance by Korean Eye artist, Da In Park
6:30pm KAYA, Korean Fusion Musical Team
7:30pm Performance by Korean Eye artist, Da In Park

THURSDAY 26 SEPTEMBER IN THE OBLIQUE LIFE ECO LOUNGE

GALLERY 3, GROUND FLOOR

11:00am Opening Remarks and Welcome from ART World Forum Ms. Anni Oates, Co-Founder	12:45am The Arts: Where Are The Women and How Do We Achieve Diversity? How has the gender gap influenced societal, historical and artistic successes?
11:10am Welcome Comments from START ART Fair David Cicchira, Founder START Art Fair	1:30pm ART Avenues: New Markets, Players and Audiences Catering for intergenerational needs, how are market players adapting their programming and outreach?
11:20am Collecting: What, How and Why? Defining art as an asset class, how do you start a collection?	2:15pm Artists' Case Study: START Art Fair Highlights Celebrating the 6th annual edition of START Art Fair, what are this year's artistic highlights? Where do artists' draw their inspirations from? How have their practice developed over time with their participation in international art fairs like START?
12:00am Art & Digital Technology: Practitioners at the Frontier How are artists, curators, galleries and institutions adopting digital technology into their practices?	3:00pm Closing Comments from ART World Forum

YOUR TICKET PERMITS ACCESS TO THE SYMPOSIUM. FEEL FREE TO POP-IN AND OUT

START x Formula E
FIND A GEN2 FORMULA E RACE CAR IN THE OBLIQUE LIFE ECO LOUNGE
WITH AN INSTALLATION BY KOREAN ARTIST. DOOWON





Visitors queue to enter START Art Fair



Duke of York Square 'What's On' Totems

Michael Caine, 86, shows off his youthful style in a bomber jacket and baseball cap as he joins glamorous wife Shakira, 72, at art fair

By REBECCA LAWRENCE FOR MAILONLINE

PUBLISHED: 00:35, 26 September 2019 | UPDATED: 12:18, 26 September 2019



They have been married for 46 years, after he saw her star in a coffee commercial.

Yet Michael Caine, 86, and his wife Shakira, 72, still looked as loved-up as ever as they attended the START Art Fair preview evening at Saatchi Gallery in London on Wednesday.

The pair seemed in high spirits as they posed for snaps at the event, which was also attended by several Loose Women stars.



© Dave Benett/Getty Images

Smitten: Michael Caine, 86, and his wife Shakira, 72, still looked as loved-up as ever as they attended the START Art Fair preview evening at Saatchi Gallery in London on Wednesday

rick Faure and the Start Art Fair at the Saatchi Gallery

and his new 'Agnostaphobia' series at the Launch of the Start Art Fair. A profusion of new art works by several artists was on display at this dynamic event.

In Monaco in 1952. He read Humanities at the State University of New York and his first art studio was in Virginia. He has exhibited his work and he was honoured with the International European Quality Award for Fine Arts in 1998.

It when he kindly explained: the meaning in his paintings and I realized he has a deep knowledge and understanding of the human condition. He has a deep knowledge and understanding of the human condition. He has a deep knowledge and understanding of the human condition.



START PRESS COVERAGE

In the run up to and during the sixth edition of START the fair attracted positive comment from the press globally including The Times, Culture Whisper, The Evening Standard, Art Asian Spectacle, Artsy and many more.



Michelle Poonawalla, *Introspection*, 2019, Multi-Media Installation.

The all-encompassing installation comes from the artist's long-term interest in the human condition and with digital technologies. It presents the public with an all-around experience of a continuous stream of orange-red hues. Visitors are assailed by a cacophonous flight of butterflies. Violence lies in the narrative recited by the enraged fluttering of the insects. The fiery background—brutal reality. The work clearly asks us to reflect upon our relationship with the world.

Michelle Poonawalla (b. 1977, India) is an artist who lives and works in London. A graduate of American College, London, Poonawalla's practice has since exhibited her work in solo and group shows in India and abroad. She has since exhibited her work in solo and group shows in India and abroad. She has since exhibited her work in solo and group shows in India and abroad.

START Art Fair, 26-29th September, Saatchi Gallery, Duke of York Place, London



About Irene MacLennan

Whenever there is an opportunity to take pictures and record the moment, I take it.



SEEING DOUBLE

Nadia brought her daughter Kiki along to the **LAVISH EVENT.** //



Kate Thornton looked glamorous in a black tulle skirt and shirt



// BLONDE BEAUTIES

whilst Jane Moore cut an edgy figure in a red leather jacket.

Michelle Poonawalla reflects on our Desensitisation to violence in 'Introspection' — START Art Fair 2019

Michelle Poonawalla will present a large-scale work titled *Introspection* at the START Art Fair (Saatchi Gallery, London, 26-29th September). The work was first shown as a collateral project at the fifth edition of the Kochi-Muziris Biennale 2018. At the Saatchi, it will be accompanied by a parallel exhibition of Poonawalla's recent paintings, encapsulating her varied practice.



Michelle Poonawalla, *Introspection*, 2019, Multi-Media Installation, START Art Fair 2019

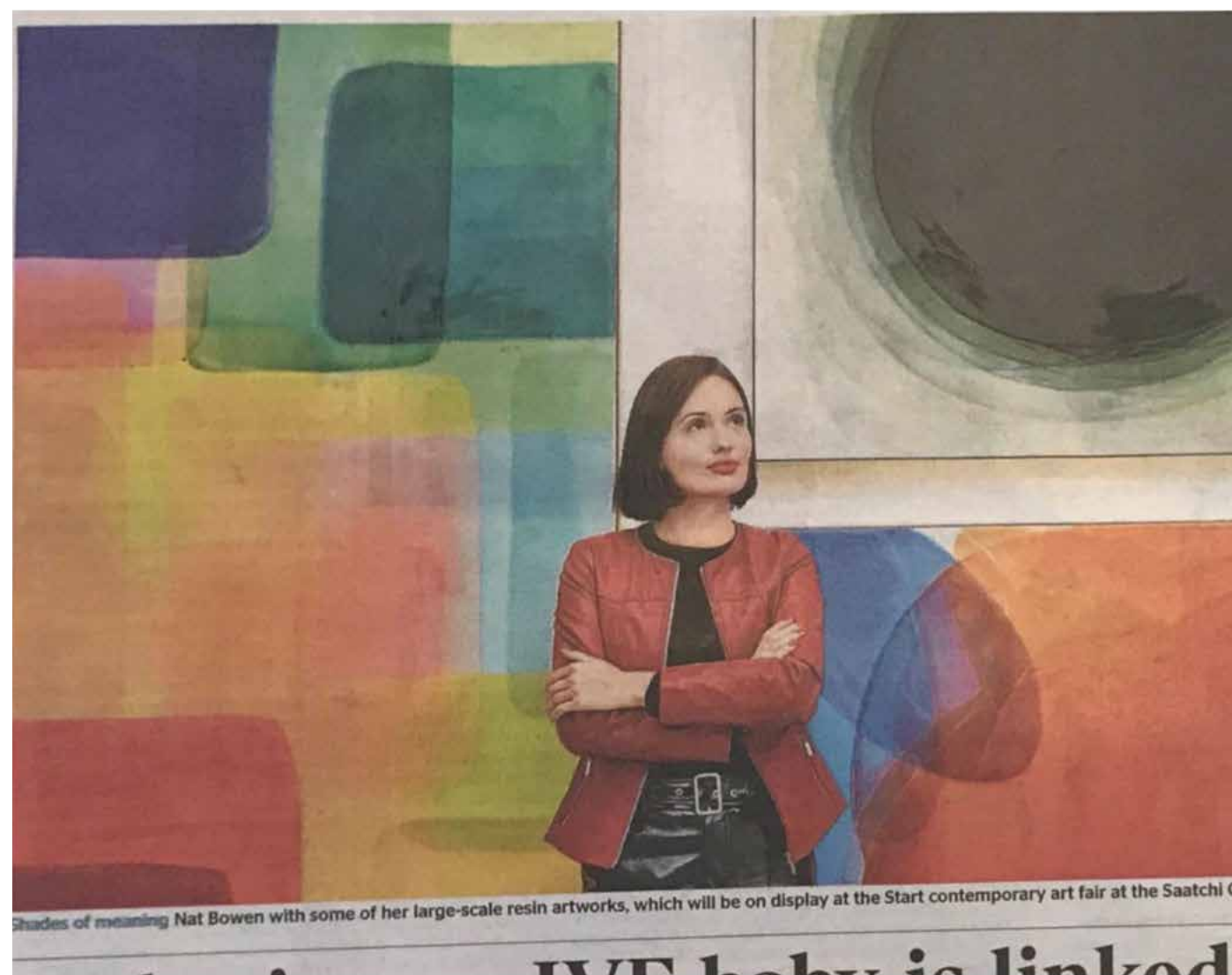
Introspection uses digital technology, a trademark in Poonawalla's work. It brings sound, motion sensor technology and digitally mapped visuals into play, which envelop the spectator at 360°. Using a combination of audio clips from newsreels and ambient recordings, it reaches an uncanny effect, based on the mediatised violence that surrounds us daily. The end result is a work of art that creates an intense and immersive experience. It forces the audience into a contemplative space between action and reflection.



Michelle Poonawalla, *Introspection*, 2019, Multi-Media Installation, START Art Fair 2019

The all-encompassing installation comes from the artist's long-term engagement with immersive projects, and with digital technologies. It presents the public with an all-around screen, characterized by a flaming orange-red hue. Visitors are assailed by a continuous stream of harsh news, which culminate in a heavy, cacophonous flight of butterflies. Violence lies in the narrative recounted by the news, as it is encapsulated by the enraged fluttering of the insects. The fiery background—bloody, inflamed, is another metaphor for a brutal reality. The work clearly asks us to reflect upon our relation to violence as it becomes mediatised.

Michelle Poonawalla (b. 1977, India) is an artist who lives and works between London (UK) and Pune (India). A graduate of American College, London, Poonawalla's practice emerged with her exhibition at the Gateway School, Mumbai, in 2016, for which she worked closely with special needs children. Poonawalla has since exhibited her work in solo and group shows in India and internationally. Poonawalla's practice marries a more formal paint on canvas style with experimental digital technology, particularly digital video mapping and motion sensor technology, to create interactive works that push the boundaries of conventional painting.



Shades of meaning Nat Bowen with some of her large-scale resin artworks, which will be on display at the Start contemporary art fair at the Saatchi G



I just wanted to say a HUGE thank you to you and the extended team for all your efforts for making START such an enjoyable and successful experience for my first time as an exhibitor. **NAT BOWEN, 2019 EXHIBITOR**



News

Patrick Faure and the Start Art Fair at the Saatchi Gallery

26th September 2019 0

Share Like Dislike 1 0

Patrick Faure presented his new 'Agnoiophobia' series at the Launch of the Start Art Fair. A profusion of new art works by several artists was welcomed by enthusiastic crowds at this dynamic event.

Patrick Faure was born in Monaco in 1952. He read Humanities at the State University of New York and his first art studio was in Virginia. Many world wide Galleries have exhibited his work and he was honoured with the International European Quality Award for Fine Arts in 2017. He is a regular contributor to 'Contemporary Istanbul'.

I met Patrick at the Launch when he kindly explained the meaning in his paintings and I realised he has a deep knowledge and understanding of Philosophy and Metaphysics. I began to see why he merges philosophy and poetry in his work while he seeks a new concept, 'Faurism'. He sees 'agnoiophobia' (fear of ignorance) and the return of Sophism (in an ancient and contemporary sense) as dangers to humanity today.

Patrick encourages viewers to explore his art in the context of our own vulnerability amidst powerful cosmic forces we cannot control. In his paintings there are threads of surrealism, but he emphasises that his inspiration comes from the conscious, not the unconscious as in surrealist art. His synthesis of mythical fantasy, modern humanity and vision of the future certainly makes an impact.

Patrick feels we should endeavour to understand our past, our environment. He has visited the Neolithic site at Gobekli in Turkey and seen there the world's probably most ancient megaliths also the site of Huaca Prieta in Peru which was inhabited c 12500 BC. At both sites he was conscious of 'agnoiophobia' He asks if we can learn from these sites and avoid their unexplained ending.

Patrick's work brings together dreams, sexual desire and wisdom. He draws on the 'Collective Unconscious' of Jung and on Socratic Philosophy. Socrates gave us the legacy that there is one good which is knowledge, one evil which is ignorance.

LONDON NEWS GLOBAL VIEWS
KCWtoday

WIA

START ART FAIR, SAATCHI GALLERY, LONDON

September 26 - September 29



Focusing on emerging artists and art scenes from around the world, the sixth edition of START art fair gives a voice to early-career artists and provides a strong platform for new and established collectors to discover talent that might otherwise have gone unseen.

Presented across all three floors of the iconic Saatchi Gallery, London, the fair reflects London's preeminent position as a global arts capital. "So many of the world's great artists have had important and enduring relationships with London that it has created an incredibly rich and diverse landscape of galleries, museums, schools and artists with international influence. I want to develop what START has done so well in continuing to bring exciting artists from around the world who we feel have great careers ahead" said Grey Skipwith, Director of START .

Opening Reception/Private View: Wednesday 25 September from 6-9pm

Public Show Days:

Thursday 26 September: 11:00 – 20:00

Friday 27 September: 11:00 – 18:00

Saturday 28 September: 11:00 – 18:00

Sunday 29 September: 11:00 – 17:00

START Art Fair 2019, Saatchi Gallery

26 SEP 19 - 29 SEP 19, TIMES VARY. SEE BELOW FOR DETAILS.

Discover the brightest rising stars of the contemporary art world at START Art Fair 2019

f t p 9 CW readers are interested



START Art Fair 2019, Saatchi Gallery

Exhibition season is warming up and the capital is buzzing with preparations for a myriad of art fairs. One of the most innovative must surely be START Art Fair, which returns to London this month for its sixth edition at the Saatchi Gallery. Specialising in emerging talent from across the globe, the fair will present the works of 100 artists, some representing themselves, others exhibiting with one of 25 galleries, hailing from 30 countries.

START gives voice to artists hoping to make a name for themselves on a global stage, while providing the perfect platform for new collectors to discover talent that might otherwise have gone unseen. Included in this year's programme is *Korean Eye 2020*, a teaser exhibition that gives an insight into the work of some of Korea's most exciting young artists. The series has been re-booted to present a new wave of Korean artists, the new show featuring 30 artists with an accompanying book published by SKIRA featuring 75 artists will launch next spring in St Petersburg before travelling to Saatchi and going on to Seoul next year.



Left: Pierre Fudarys, *Don't look back, just remember II*, (2019). Right: Katya Shkolnik, *Grey & Pink* (2019)

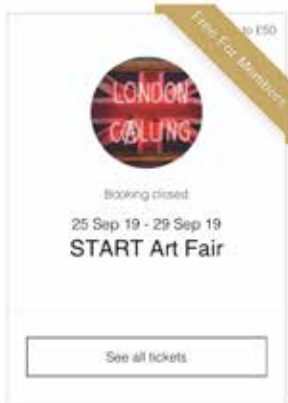
There will also be a presentation courtesy of multidisciplinary artist Philip Colbert, whose *Lobster World* promises to entertain visitors with an imagined universe like no other. Colbert, who uses familiar pop culture references in his paintings, furniture designs and even his 'wearable art,' describes himself as a 'neo pop surrealist,' so expect some trippy visuals.

Look out, too, for the beautifully intricate paintings of Hana Shahnavaz, who works on paper in the Iranian miniature tradition. Also not to be missed is Michelle Poonawalla's multi-sensory installation *Introspection*. Using audio clips from newsreels and ambient sounds, together with digitally mapped visuals, Poonawalla's 'uncanny sensorium' will rework and re-examine the endless march of news images that confront us on a daily basis.

This year's START Art Fair promises to be a heady, immersive experience from start to finish. Even the Oblique Eco Lounge and Bar will surround visitors with visual treats including a full size Formula E Gen2 race car and Formula E inspired installation by Doowon Lee and a full programme of music. This is the perfect venue to kick off London's art fair season, while experiencing some cutting-edge innovations.

START ART FAIR 2019 OPENING HOURS

*Wednesday 25 September VIP Private View 6-9pm
Thursday 26 September 11am-8pm
Friday 27 September 11am-6pm
Saturday 28 September 11am-6pm
Sunday 29 September 11am-5pm



Most popular



Best pumpkin patches near London



Everything you need to know about UK, Disneyland, Kent's London Resort



Eat, Drink and be Scary: best London Halloween Events, 2019

Editor's Picks



Art exhibitions in London this weekend



Exhibitions to book now



The best art exhibitions in London this October

A little more...

WE RECOMMEND NEARBY

VARDÔ RESTAURANT

Read more...

Map

ORÉE, KING'S ROAD

Calling all Francophiles. Indulge in heavenly breads and delicate tarts at Orée, the French bakery with three sites in Kensington and Chelsea. There are plenty of culinary treats on offer here to satisfy both your sweet and savoury cravings.

Book Map

LA CUISINE DE BAR

La Cuisine de Bar is nearby Cadogan Gardens



Art Spectacle International Asia

Now in its sixth edition, **START Art Fair** opens its doors to the public on 26 September 2019, offering a glimpse into emerging art practices from 30 countries worldwide. The fair, founded by David and Serenella Ciclitira, supports emerging artists and gives space to both galleries and individual artists to showcase their art within the walls of the Saatchi Gallery in London. Prices of the art on show range from as low as GBP100 to GBP80,000, allowing new and young collectors as well as established and seasoned ones to have a pick at the fresh art on offer.



Kim Jae Il, *Impact*, 2016, acrylic on fibreglass resin, 120 x 110 x 4.5 cm. Image courtesy the artist and START Art Fair.

In addition to the gallery and artist booths, there are a number of special projects as well as a half-day conference for the Collectors Club, organised by the Art World Forum. Co-founder of START David Ciclitira is quoted in the press release as saying:

"This year START will present 100 artists and 25 galleries from 30 countries - these are young artists and galleries that are not hugely wealthy, we try to support them as much as possible. As we all know, London isn't the cheapest place in the world, nor is it the cheapest place to buy art, so the key thing is to help them sell their work on an international stage. I believe that collectors - and especially younger collectors - are hugely important to that mission; it's why we're here. I am further delighted that following an extremely high volume of quality applications from galleries and self-representing artists we have opened a waiting list of accepted artists and for early applications to the 2020 show. This overwhelming volume of applications from so many exceptional undiscovered artists has led to an international expansion of the START brand details of which will be released in the coming months.

6 Questions: British-Iranian painter Hana Louise Shahnava



'Shabdiz', 2017. Natural pigments and 24ct gold on handmade hemp paper, Hana Louise Shahnava

British-Iranian artist Hana Louise Shahnava spent 6 years studying the art of traditional Persian painting in Iran under the tutorage of master painter Safoura Asadian before moving back to London to continue her studies at the Prince's School of Traditional Arts. In a week dominated by the ultra-contemporary and beyond abstract at Frieze London, we speak to a young living artist increasingly admired for her painstaking creation of materials – she mixes her own paints, from Persian soils – and her intricate artworks which possess a poetic, almost mystical quality as if merging ancient myth and the current zeitgeist for the authentic

1. Why is Iran so important in informing your art?

Iran has been, still is, and always will be absolutely vital to my artwork. I'm really inspired by Persian miniatures, Persian stories and Persian poetry, and for me it is really important to explore the roots and origin of these Persian art forms that influence and guide my own art so much. The obvious starting point of this exploration would be by visiting and honouring the location, which is in most part what we know as modern day Iran. I learnt to paint in Iran, having moved there post uni and ended up staying for around 6 years completely immersing myself in the arts. I therefore owe Iran a lot for the nurture it gave me and all it taught me.



Hana Louise Shahnava

Things to do

ART FAIR: The [Start Art Fair](#) specialises in showcasing emerging artists and new art scenes. Browse the work of exhibitors from several countries spread across three floors of the gallery – and perhaps take something home with you, as prices begin at £100. Saatchi Gallery (Chelsea), £12.50, [book ahead](#), 26-29 September

UNDERGROUND SPACE: The Railway Civil Engineers' Association digs deeps for a talk about the sustainable use and development of [tunnels and underground space in London](#). Professor Colin M Eddie talks about the past, present and future of tunnelling and underground space, and how the cost and time to deliver tunnelling projects can be drastically reduced in the future. Someone put that man in charge of Crossrail. ICE (Westminster) free, [book ahead](#), 6pm-8pm

FEMINIST HISTORY: Take a tour of [Bishopsgate Institute's impressive archive](#), with specific focus on items surrounding women's and feminist history. Learn about the woman who put up Ghandi in the East End, Britain's first ever female firefighter, and other inspirational women. Bishopsgate Institute (Liverpool Street), £7/£5, [book ahead](#), 6.30pm



Start Art Fair begins today

15 GREAT THINGS TO DO IN LONDON THIS WEEKEND: 28-29 SEPTEMBER 2019

Victoria Purcell on 23rd September 2019

Tagged [Central London](#) [East London](#) [North London](#) [South London](#) [West London](#)

5 START at Saatchi Gallery, Chelsea 26-29 September

The START Art Fair is returning to the Saatchi Gallery for its sixth edition to showcase the best UK and international emerging contemporary artists to collectors, investors and art lovers in London. This year the selection includes nearly 50 galleries and artists, including BiHop from South Korea, Bermon Contemporary from South Africa, The Gallery STEINER from Vienna and Illuminati Neon from Shepherd's Bush. After the success of the inaugural Art World Forum symposium at START 2018, this year's programme has been expanded to include a half day conference as well as additional talks and Collectors Club events.

Duke of York's HQ, King's Road, Chelsea SW3 4RY; startartfair.com

READ MORE

- **AD FEATURE** **MONIKER ART FAIR MOVES TO CHELSEA FOR 2019 LONDON EDITION**

» Events » London events » Saatchi Gallery

start art fair, london, 26-29 september 2019

📍 Saatchi Gallery in London

📅 Thursday 26th - Sunday 29th September 2019

🕒 Thu 11:00am til Sun 6:00pm

👤 Minimum Age: 18

START Art Fair is a high-profile platform for emerging contemporary artists and new art scenes from around the world.



[event info](#) [hotels & airbnbs](#) [venue](#) [reviews](#)

this event has already happened!

This event occurred in September 2019. If you're looking for a upcoming event, try the links below:

- [Leave a review of this event »](#)
- [View more events at Saatchi Gallery »](#)
- [View more events in London »](#)
- [Search for 'START Art Fair, London, 26-29 September 2019' »](#)

recommended events



reviews of this event

Be the first to leave your review of this event »

start art fair, london, 26-29 september 2019 on thursday 26th - sunday 29th september 2019

EXCELLENT

★★★★★

4.5 Average
8834 Reviews

Reviews.co.uk

✓ **fair refunds**
if the event is cancelled
you'll get a full refund

✓ **official tickets**
100% guaranteed

✓ **uk's biggest
events and what's
on guide**



In its sixth year, START Art Fair will return to **Duke of York Square**'s Saatchi Gallery from 26-29 September, to showcase emerging artists and young galleries from across the globe.

The fair will present over 50 rising artists from more than 25 countries to collectors, investors and art lovers at the gallery, which is at the height of the contemporary art scene.

Receive an exclusive 20% discount on ticket prices when you enter "Cadogan" at the checkout. Purchase tickets [here](#).



Press Release

START focuses on emerging artists and new art scenes. Inside this brochure you will find highlights of the fair, The Oblique Life Eco Lounge events schedule and a plan of where to find all our amazing exhibitors across all three floors of Saatchi Gallery. With prices that range from £100 to £80,000 the fair has something for everyone, from seasoned collectors through to those looking to buy their first piece of art. Enjoy the fair!

Follow Artists In This Show

More Booths from START Art Fair 2019

Sladmore Contemporary

START Art Fair 2019

SLADMORE CONTEMPORARY
Booth 2.1



Area35 Art Gallery

START Art Fair 2019

AREA35 ART GALLERY
Booth 6.4



© 2004 Blackwell Publishing Ltd

[f](#)
[w](#)
[e](#)



- A teaser exhibition ahead of the international presentation of Korean Eye 2020, presented by parent company PCA and marks the Global Eye Programme's 10th Anniversary. The exhibition is co-curated by PCA Founder and CEO Serenella Ciditira, Dimitri Ozerkov, and Saatchi Gallery Director Philly Adams. This exciting teaser will bring a group of the most forward-thinking and pioneering young contemporary artists in Korea today to central London and an international audience. The full show of 30 artists will open in Russia in Spring 2020 before travelling back to the Saatchi Gallery and finishing in Seoul next autumn. Korean Eye 2020 is supported by Principal Sponsor **KEB Hana Bank**.



Date/Time
Saturday 28th of September, 2019
10:00 AM - 6:00 PM

Location
Satchi Gallery,
Duke of York's HQ, Chelsea, London SW3_UK

Nearest Stations
 Tube: Sloane Square (5 min walk)
 Train: Victoria Station (20 min walk)

Program

26 Sep 2019 - 29 Sep 2019

Irena Procházková at START art fair at Saatchi Gallery



Works by Czech artist Irena Procházková will be presented at this year's START art fair at the Saatchi Gallery. Irena's current focus is people and their portraits, as well as composition drawings using oil on canvas.

Irena Procházková was born in Tábor, Czech Republic in 1973. She currently lives and works in Prague. Her paintings are inspired by her travel experiences and her daily life. Irena's style is influenced by impressionism, post-impressionism and expressionism. She cites Monet, Van Gogh, Gauguin and Czech painters such as Špála and Slaviček as her favorite artists. Her work is full of colour, especially blue, red and orange, which enable her to vividly express her emotions. Many of her still-life paintings were created during her training under the academic painter Bedřich Uzdilová.

START returns to London's Saatchi Gallery this September, showcasing emerging artists from new art scenes to give art collectors and enthusiasts alike the opportunity to discover artwork from developing global markets. Founded and organised by Parallel Contemporary Art and Saatchi Gallery, START takes place across all three floors of Saatchi Gallery. It aims to introduce a young generation of galleries and artists to an international audience and provide an insight into the future of contemporary art.

<http://startartfair.com>
www.saatchi-gallery.com

Opening hours:

Wednesday 25th September: VIP Private View & Opening Reception 3pm-9pm
 Thursday 26th September: late night opening
 Friday 27th September: 11am-6pm
 Saturday 28th September: 11am-6pm
 Sunday 29th September: 11am-5pm

[Book tickets](#)

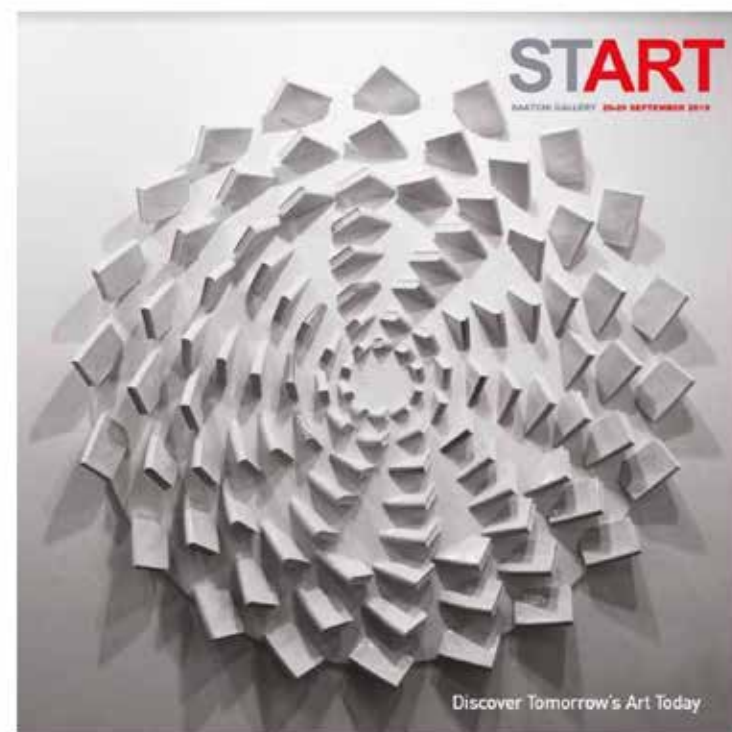
Foto



Remind me

This event has already started.

ART



ART FAIR

Start Art Fair

26 Sep 2019 - 29 Sep 2019

[Times and details](#) ▼

START Art Fair returns for its sixth edition, as it continues to provide a vital platform for emerging artists and young galleries from around the world.

About

START Art Fair returns for its sixth edition, as it continues to provide a vital platform for emerging artists and young galleries from around the world. Taking place from 26-29 September 2019, the fair will present over 50 artists from more than 25 countries to collectors, investors and art lovers on a global stage. In compliment to the exhibitor booths START will present a variety of Projects including a teaser exhibition of *Korean Eye 2020* a collaboration between the State Hermitage Museum, St Petersburg, Parallel Contemporary Art and Saatchi Gallery.

Art form

[+](#) Drawing
 [+](#) Prints
 [+](#) Painting
 [+](#) Design

Twitter

[@saatchi_gallery](#)

Website

startartfair.com/

Facebook

www.facebook.com/saatchigalleryofficial

Instagram

[instagram.com/saatchi_gallery](https://www.instagram.com/saatchi_gallery)

Added by

Helena
 + 1

Start Art Fair

Update this event

Telephone: 020 7225 2000

Email: info@startartfair.com

Website: startartfair.com

An exhibition focusing on emerging artists and contemporary art.



Housed in London's Saatchi Gallery, START Art Fair was established in 2014. The fair's aim is to lead the art world by focusing on international emerging artists and new art scenes. In a few short years the fair has quickly gained a strong critical reputation and is regarded by London's collector set as the place to discover artists at the beginning of their careers. The fair is a high-profile platform which presents emerging artists in a museum quality environment and attracts in excess of 10,000 high net worth, art lovers, collectors and investors over four days.

The sixth edition will open with a VIP Private View on 25 September and to the public from 26 -29 September 2019, coinciding with the opening of FRIEZE London and kicking off London's autumn art season with exhibitors' presentations and curated projects. As part of the Global Eye Programme a teaser exhibition of Korean Eye:2020 will open at the fair ahead of its official launch at the State Hermitage Museum, St Petersburg in Spring 2020.

[Show more...](#)

Text supplied by third party.



A Different Kind Of Fair

Those of you still reminiscing over summer probably haven't even noticed that London's exhibition season is ON! The Frieze, The Other Art Fair, LAPADA, PAD: the city is practically buzzing with art fairs, leaving Londoners spoilt for choice of things to do and more than satisfying the average art lover's appetite.

Art fairs play a major role in the industry for a number of reasons, from the impact of digital to the rise of the nomadic gallery model, and as a result some of the biggest names in contemporary art have been discovered at these events.



©Saatchi Gallery

But what about START Art Fair? Held in Chelsea's prestigious Saatchi Gallery, it could be described as a more "boutique" alternative to its contemporaries. Focusing on international emerging talent, START brings together a meticulously curated selection of around 100 artists and 25 galleries from 30 countries. Saatchi not only lends a voice to these artists looking to get exposure on the global stage but is a perfect platform on which to educate new collectors, allowing them to discover talent that might otherwise have gone unnoticed.

Michelle Poonawalla



©Start Art Fair 2019

Everyone loves an Insta-friendly installation but be sure to take a moment in between posting stories to fully experience the magic of Michelle's "Introspection". Housed in its very own dedicated space on the ground floor, many viewers appeared ever so slightly agitated at the opening line of the introduction on the wall: "How do we make sense of the barrage of images of violence and displacement that we are confronted with in endless news cycles?"

boutiquelondon
property & places

Nat Bowen

It was certainly a wonderful pleasure to speak to this self-taught showstopper, a British resin artist who made a fascinating transition from the world of fashion, to property, to art. Her large-scale resin works reflect her study of Chromology, the psychology of colour and its growing necessity in the realm of mental health and wellbeing. This message is particularly hard hitting in a world where it is increasingly difficult to combat unhealthy levels of exposure to technology.



©Start Art Fair 2019

Everyone loves a splash of colour in their lives and art collectors are no exception! The pieces on show went down spectacularly well with potential buyers thanks to Nat having deliberately worked with the most vibrant of mediums to enhance their physical and emotional impact, as well as their healing qualities. With shows in Miami, New York, Hong Kong and Hamburg, Nat Bowen is one to watch!

ILLUMINATI NEON: MARK SLOPER

Someone once said, "sometimes it makes a world of difference to meet the artist" and that statement could not be more accurate in this case! The Boutique London team were quick to learn that Mark Sloper (behind the "Illuminati Neon" brand) was quite the celebrity on the second floor.



©Start Art Fair 2018

His fabulous works with light stole the show on the opening night, bringing a remarkable turnout that congregated en masse around his corner of the room. Mark also happens to be a remarkable storyteller, taking the time to ponder aloud whether it was worth selling a piece including the t-shirt of the Sex Pistols' drummer, and drawing attention to the antique of an American flag with only 48 stars that had "Hardiness and Valor", "Purity and Innocence" and "Vigilance and Justice" emblazoned across it.

Pedro Merry at the START Art Fair

26 Sep 11:00 am - 29 Sep 6:00 pm | Saatchi Gallery | London



START was founded in 2014 to present international emerging art and artists on a global platform, six years later the fair remains true to its international scope and devotion to emerging art. We are delighted to communicate that the Spanish artist, Pedro Merry, will be participating in the sixth edition of START at Saatchi Gallery, from 26-29 September.

Pedro Merry:

With an extensive legal career in leading European firms and as a founding team member of the motorsport Championship FIA ABB Formula E, London-based artist Pedro Merry has nurtured an intense artistic practice in parallel to his daily job. By participating in START his work will be exhibited for the first time.

Passionate about the Spanish masters and influenced by the latest expressionism of the 20th century as well as Pop Art, Pedro has recently been focused on commissioned works for high profile personalities in motor racing.

His recent works, rich in colour and prolific in hand-made collage elements, are meticulously painted and assembled in different layers, exploring the limits between humans and machines through notions of speed, competition and transformation.



📷 LONDON ART FAIRS IN 2019



ARTS

London art fairs 2019: From Affordable to Frieze, the fairs you should visit this year

START Art Fair

Emerging artists and young galleries from around the world are the focus of START, which comes to the Saatchi Gallery at the end of September, offering their predictions for the future of international contemporary art.

September 26-29, Saatchi Gallery; startartfair.com

EveningStandard.

START Art Fair

26 - 29 September

Saatchi Gallery, Duke of York's HQ, King's Rd, Chelsea, London SW3 4RY



Andres Barrioquinto, From The Edge of The Deep Blue Sea, 2019, 122x152cm, Oil on canvas, START Art Fair 2019 exhibitor

2019 marks the sixth edition of START Art Fair, which will be held in London's Saatchi Gallery. The fair presents the best from the emerging art scene, so is a great opportunity to buy from these early career artists with bright futures.

go
with
Yamo

Every Major Art Fair in the UK in 2019



Emerging artists and young galleries from around the world are the focus of START, which comes to the Saatchi Gallery at the end of September, offering their predictions for the future of international contemporary art. For those struggling to see the difference between START and the Other Art Fair, this fair definitely focuses more on an international community of artists. It's a startling melange of colour and form and there's a diversity of thought and practice amongst artists from Buenos Aires to Taipei. Feeling more like an exhibition than a fair, this is an important one for artists reputations perhaps over their pockets.

- Where: Saatchi Gallery, King's Road, London SW3 4RY
- When: 26th - 29th September 2019
- Website: <http://startartfair.com/>



South Korean artist Ung Pil Byen's self-portraits at START Art Fair - Image Credit - [Diary of a Londoness](#)



START Art Fair

The goal of START is to allow visitors and buyers to discover tomorrow's art today. Founded by Parallel Contemporary Art and the well-known Saatchi Gallery, START aims to enable collectors, curators, and the greater public to discover new artistic talent. This event features 70 galleries from around 40 cities. Held each year in September in the esteemed Saatchi Gallery, the fair creates the best possible showcase for young galleries and new artists. START is the perfect event to discover the future stars and fresh names of the contemporary world in a luxurious environment.

Practical info START Art Fair 2020



Location

Saatchi Gallery
Duke of York's HQ
King's Road
London SW3 4RY
United Kingdom



Opening hours

September 2020: TBA



Entrance Fee

Adult: £12 (on gate)
Adult: £12 (advance purchase)



Mediums

Painting
Sculpture
Photography
Drawing



Art Periods

Contemporary



Contact

info@startartfair.com
0207 811 3085
Wobelt



Housed in London's Saatchi Gallery, START Art Fair was established in 2014. The fair's aim is to lead the art world by focusing on international emerging artists and new art scenes. In a few short years the fair has quickly gained a strong critical reputation and is regarded by London's collector set as the place to discover artists at the beginning of their careers. The fair is a high-profile platform which presents emerging artists in a museum quality environment and attracts in excess of 10,000 high net worth, art lovers, collectors and investors over four days.

The sixth edition will open with a VIP Private View on 25 September and to the public from 26 -29 September 2019, coinciding with the opening of FRIEZE London and kicking off London's autumn art season with exhibitors' presentations and curated projects. As part of the Global Eye Programme a teaser exhibition of Korean Eye:2020 will open at the fair ahead of its official launch at the State Hermitage Museum, St Petersburg in Spring 2020.

<https://eventsforlondon.co.uk/event/start-art-fair-london-26-29-september-2019/>

London. Honestly.

St. Petersburg Pass Card - Buy online from €61 only

Save on museum tickets and fare. Easy buy online & get the best price!
petersburgcard.com

OPEN

What's Near Me? WHAT'S ON - EATING & DRINKING - DIRECTORY - VISIT - OUR PICK - SITEMAP -

Google Custom Search

Home / What's On / Exhibitions / START Art Fair, London, 26-29 September 2019

START Art Fair, London, 26-29 September 2019

Saatchi Gallery, Duke of York's HQ, King's Road, London

Tweet Like 0

Event location:
The Saatchi Gallery, Duke of York's Building, Kings Road.

new

ALL on Social Media

f t i

What's New?

Even Universal in for a touch of film



staceyforsey Follow



612 likes

staceyforsey Such an inspiring evening #saatchigallery private view #lincolntownley #retrospective you smashed it last night @LincolnTownley @RealDeniseWelsh

View all 17 comments

START SOCIAL MEDIA

START 2019 received 1,000's of mentions on a variety of local and international Social Media platforms.



11:41

TOP POSTS
#startartfair2019

aramzy0204 @pjs7174 쌤이 더 멋지십니다.~^^😊

sonhyegyeong594 언니완전최고닷

25 September · See Translation

aramzy0204 · Following
Saatchi Gallery



Liked by start_artfair and 36 others

aramzy0204 말로만 듣던 사치갤러리에 입성중. START Art fair 2019 VIP Opening day... more

11:36

TOP POSTS
#startartfair2019

aramzy0204 · Follow

한겨레 the Leader

작가 한아람 런던 사치 갤러리 '2019 스타트 아트페어' 초청 받아

신작 'Bibliovortex' 현대사회 복잡한 상황에서 지식이 정보화는 역동성 표현

머니투데이 더리더 최정면 기자 2019.09.05 07:15 + 크게

TALK

 A photograph of a woman with short dark hair, wearing a white lace top, standing in front of a large, white, geometric sculpture made of many small, interconnected cubes.

Liked by start_artfair and 72 others

aramzy0204 제 전시에 많이 관심을 가져 주셔서 감사합니다. 국내 언론에서 기사를 많이 내 주셨어염.~😊📢 A lot of my articles were also published by the Korean... more

View all 13 comments

eungyeong_ryu 축하드려요

TOP POSTS
#startartfair2019

littlesisterlondon · Follow



Liked by start_artfair and 32 others

littlesisterlondon What a great night at the launch of #STARTartfair - three floors full of exciting contemporary art, with the opportunity to meet many of the exhibiting artists. @candyieldham_ and I had the pleasure of meeting wonderful Turkish artist @nuribattal.artstudio, whose work we loved and also I got to see the work of @mark_illuminati, which I was excited about! It's on at the @saatchi_gallery until Sunday. #startart #startartfair2019 #saatchi_gallery #contemporaryart #nuribattal #markilluminati #artlovers #londonartscene #dynamic #contemporaryartists #colourandshape #neonlight #creativity #inspirationalartwork #saatchigallerylondon #londongalleries #londonart #artistsinlondon #saatchiart #saatchigallery #colourlovers #art #contemporary #artistsoninstagram #nuribattalart #nuribattalstudio



vernissagep • Follow
Saatchi Gallery

vernissagep #Saturday #spot on #start artfair #startartfair @saatchi_gallery gallery and meeting #friend and fellow #artist @allabrooksmit @artallastudio . Definitely the best #artwork of the exhibition - measured , #poetic and fluent in her subtle #colour narrative . Here with Alla in front of her #paintings taking in the # hues and delicate #chanting of the #creative #soul .. #artwatch #artistway #izabellaway #livingincolor #arteverywhere 🌈

2d

looksatbrooks Two gorgeous women ❤️❤️

2d 2 likes Reply

56 likes 2 DAYS AGO

Add a comment... Post



rheasophia • Follow
Saatchi Gallery

rheasophia He told me, 'Darling, you're a piece of art.' 🌸

3d

bonnyrose_g 🥰🥰🥰 babygirl

3d Reply

kiragr33nx Gorgeous babe 🥰🥰

3d Reply

darlin.daisyteam Hey beautiful we came across your feed and would love to collab! Dm us @DARLINDAISY.OFFICIAL 💖

3d

178 likes 2 DAYS AGO

Add a comment... Post



theobiquelife • Follow
START Art Fair

theobiquelife The Oblique Life's partnership with @start_artfair 2019 START is a highly acclaimed and influential fair which casts the spotlight on the contemporary art scene's fire faces and young galleries. It is internationally recognised as a crucial platform for upcoming names in the world, and has previously hosted exhibitors from over two dozen cities across the globe, from hotspots like Paris and New York to lesser known locations including Beirut and Lagos. This year, from the 28th to the 29th September, START has returned to the Saatchi Gallery in London to offer art amateurs and connoisseurs alike the opportunity to celebrate the hottest undiscovered, talent.

18 likes



redeightgallery • Follow
Saatchi Gallery

redeightgallery Come and find the Red Eight Gallery team at @mark_illuminate display on the first floor in the @saatchi_gallery interested in one of these pieces? Get in touch or send us a DM! 📧 #art #saatchigallery #redeightgallery #neonart #royalfamily

4d

derekharepaintings Looks great! Sorry I couldn't be there. 🙏

4d 4 likes Reply

battissathelabel Fantastic to see you all yesterday and to meet @mark_illuminate illuminate 🌟

91 likes 4 DAYS AGO

Add a comment... Post



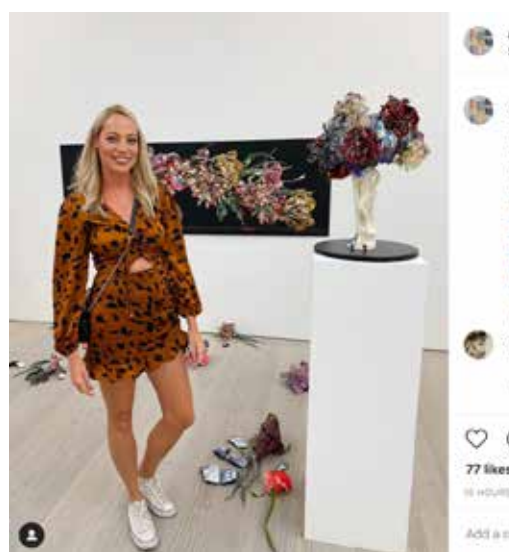
sherryx... • Follow
Saatchi Gallery

1349ffib [爱心] Chanel, Gucci, LV, YSL, Dior, Celine, Hermes, Fendi, 等等, 需要: 🛍️ + shoes1349 🛍️ + clothes1349 🛍️ + corral1319, 男装bag1349

1d Reply

28 likes 2 DAYS AGO

Add a comment...



artbydominique • Follow
Saatchi Gallery

artbydominique Spent the afternoon at the Start Art Fair at the Saatchi Gallery. It was definitely worth a visit. I saw so many incredible works of art and left feeling so inspired and bursting with new ideas that I headed straight to my studio afterwards! #startartfair #saatchigallery #londonart #artfair #artlife #contemporaryart #contemporaryartist #londonartscene #londonartfair #art #artshow #roandmouret

15h

raulranet Great!! Did you see my work over there ?? 🙏🙏

15h 1 like Reply

77 likes 16 HOURS AGO

Add a comment...



singaporetag • Follow
START Art Fair

singaporetag #startartstyle #STARTARTFAIR @onesastale @start_artfair @barrioquinto @saatchi_gallery -

"Creative Congrats" Andre Barrio - on your superb sell out show. So lovely to see everyone! Enjoy London Tour! 🌟

#barrioquinto #andresbarrioquinto

29 likes 1 DAY AGO

Add a comment...



roberto_grosso_art • Follow
London, United Kingdom

roberto_grosso_art When artists discuss about concept, colors, and anything you can think of.

Me and @patricklaure17 Start art Fair At @saatchi_gallery #saatchi #patrick #art

18 likes 2 DAYS AGO

Add a comment...



damsonpr • Follow
Saatchi Gallery

damsonpr The thought provoking multimedia installation 'Introspection' by @michelle_poonawalla seeks to translate the sense of discomfort and unease in the way images of violence are consumed today.

A must see at @startartfair!

#michelle_poonawalla #Introspection #immersive #installation #startartfair #womenartists

3d

michelle_poonawalla 🙏🙏🙏

3d Reply

25 likes 3 DAYS AGO

Add a comment...



nat.bowen • Follow
Saatchi Gallery

nat.bowen This time last year, after seeing on IG that @incolntowney was exhibiting @start_artfair, I attended the show at the Saatchi Gallery as a visitor to check out his works. This year I am here but as a solo artist showcasing my own works - a goal I had set 12 months back. Lincoln and I connected on IG 2 years ago when I was just starting out as an artist and he has been supportive of my work from the beginning. I have

426 likes 2 DAYS AGO

Log in to like or comment.



thedragongallery • Follow
Saatchi Gallery

thedragongallery Join us at @start_artfair @saatchi_gallery. The Dragon Gallery is one of 41 galleries exhibiting at the sixth edition of this year's START Art Fair at the Saatchi Gallery. We're here all weekend until the 29th of September.

We are proud to present our Artists Fernando Velazquez, @fernandovelazquez @mikek107 and

23 likes 2 DAYS AGO

Log in to like or comment.



thedragongallery • Follow
Saatchi Gallery

thedragongallery Join us at @start_artfair @saatchi_gallery. The Dragon Gallery is one of 41 galleries exhibiting at the sixth edition of this year's START Art Fair at the Saatchi Gallery. We're here all weekend until the 29th of September.

We are proud to present our Artists Fernando Velazquez, @fernandovelazquez @mikek107 and

11 likes 2 DAYS AGO

Log in to like or comment.



alan.waring.art • Follow

alan.waring.art START ART FAIR, Saatchi Gallery, London 2019. Gallery: Ohden, Copenhagen.

#gallerishden #saatchigallery #startartfair2019 #londonartscene #contemporaryart #artsoninstagram #artworld #artscene #loveart #artdisplay #danishartist #sculptureart #sculptureart #businessart #businessart

91 likes 1 DAY AGO

Log in to like or comment.



aramzy0204 • Follow
Saatchi Gallery

aramzy0204 사치갤러리 내 아티스트에서 아인 아트페어 도록을 판매중이요. 판매 - 📖

This art fair catalogues are on sale in a Saatchi gallery art store.

#saatchistore #aramhan #catalogue #startartfair2019 #premiumpages #london #koreanartist #ceramicsculpture #contemporaryart

3d

eungyeong_ryu 상장이 발행예정 하겟어요 🙏🙏🙏🙏🙏

3d 1 like Reply

59 likes 2 DAYS AGO

Log in to like or comment.



monsieurpaulchronicle • Follow

monsieurpaulchronicle Last was such a treat. Private tour of @start_artfair by a fantastic diner in such a company. Was awesome to be down with some of the artist discussing around delicious wine. What more would you like Thank you.

#vip #privateview #art #startart #startartfair2019 #artist #palm #saatchigallery #diner #celebrity #londonart #saatchiart

2d



cengizyaganofficial • Follow
Saatchi Gallery

nevhangunduz Kardeşim tebrik ederim 🎉🎉

1d 1 like Reply

celiklerant16 Tebrikler 🎉

1d 1 like Reply

278 likes 2 DAYS AGO

Log in to like or comment.



noicecilaolaine • Follow
Saatchi Gallery

noicecilaolaine Some people butterfly than others! Thank magic, Michelle! #Introspecti #michelle_poonawalla #startart

4d

michelle_poonawalla 🙏🙏

3d 1 like Reply

62 likes 4 DAYS AGO

Log in to like or comment.



artworldforum • Follow
Saatchi Gallery

artworldforum With the first few images of our 2nd annual #london event emerging, "The Bigger Picture", watch this page for more. 📺

#artworldforum #artworld #art #artbusiness #artbusinessconference #artworldart

26 likes 4 HOURS AGO

Log in to like or comment.



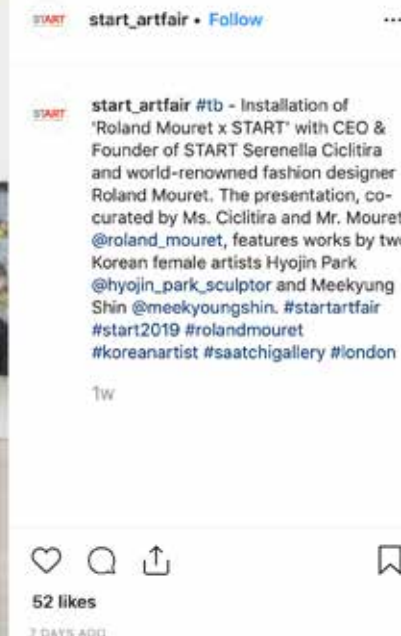
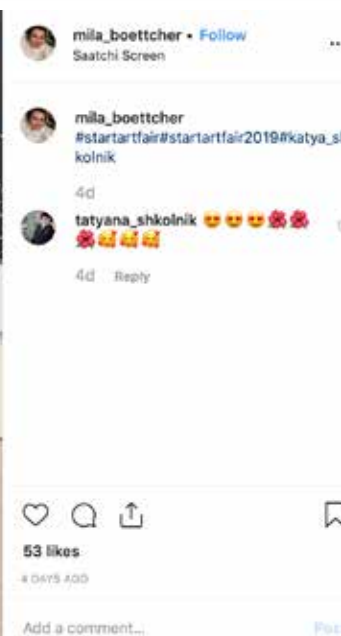
bermancontemporary • Follow
START Art Fair

bermancontemporary Putting South African Contemporary Art on the map at the START Art Fair 2019 was a good experience. We invited a lot of people to have a closer look at the works of Natalie Field, Ingrid Bolton and Marian Hester and introduced and explained the art world in South Africa. Interesting plans for an international collaboration with artists from around the world have been discussed and collectors were pleasantly surprised by the approach of the artists around the environmental issues.

@start_artfair @ingridboltonart @natalie.fieldart @marianhester #start2019 #startfair #artfair #saatchigallery #london #londonart

50 likes 18 HOURS AGO

Add a comment...



SEE YOU IN 2020!



Nat Bowen (Artist)

START

SAATCHI GALLERY 26-29 SEPTEMBER 2019