

BRICKLIVE™

ANIMAL PARADISE



EDUCATIONAL BRICK-TASTIC MODEL TRAIL



15
AMAZING
MODELS



BRICKLIVE[®]
ANIMAL PARADISE

BRICKLIVE ANIMAL PARADISE

ANIMAL PARADISE is a brick-tastic model trail with the mission of educating the next generation of children on the theme of endangered animal species in a fun and friendly environment, a day out that can be enjoyed by the whole family. The tour contains brick-built statues and photoopportunities which are themed around animals that exist within various habitats across the globe. Visitors will come face-to-face with amazing creature such as an imposing Tiger, a proud African Lion and a graceful Dolphin.

The four habitats represented in ANIMAL PARADISE are Wildlands, Snow and Ice, Ocean and Jungle. The first set premiered in 2018 and has already visited 3 continents. Starting in the Bird's Nest Stadium, Beijing, the models then moved on to the Grimaldi Forum in Monaco before flying across the pond for events at the Dallas Cowboys and Brookfield Zoo, Chicago.

There are now 4 sets of ANIMAL PARADISE and this set of 15 models is perfect for shopping malls, town centres and smaller visitor attractions. Our partners use the models to create a trail map around their venue, each model comes with an ID card that can include a question to answer for the trail map.

MODELS





AFRICAN LION

MODEL STATISTICS

Dimensions: 131 x 88 x 135 (LxWxH)

Brick Count: 50,349 bricks

Hours to Build: 400

Weight: 214kg



AFRICAN WILD DOG

MODEL STATISTICS

Dimensions: 68 x 42 x 103cm (LxWxH)

Brick Count: 12,871 bricks

Hours to Build: 113

Weight: 55.7kg



BENGAL TIGER

MODEL STATISTICS

Dimensions: 231 x 131 x 236cm (LxWxH)

Brick Count: 81,350 bricks

Hours to Build: 392

Weight: 520kg



BLUE FIN TUNA

MODEL STATISTICS

Dimensions: 129 x 44 x 46cm (LxWxH)

Brick Count: 7,742 bricks

Hours to Build: 68

Weight: 93.5kg



DOLPHIN

MODEL STATISTICS

Dimensions: 126 x 61 x 128cm (LxWxH)

Brick Count: 22,298 bricks

Hours to Build: 84

Weight: 79kg



EMPEROR PENGUIN

MODEL STATISTICS

Dimensions: 57 x 52 x 118 (LxWxH)

Brick Count: 22,578 bricks

Hours to Build: 49

Weight: 47kg



GIANT PANDA

MODEL STATISTICS

Dimensions: 102 x 132 x 132 (LxWxH)

Brick Count: 62,351 bricks

Hours to Build: 206

Weight: 237.5kg



GORILLA

MODEL STATISTICS

Dimensions: 88 x 96 x 118 (LxWxH)

Brick Count: 42,659 bricks

Hours to Build: 167

Weight: 158kg



GREEN SEA TURTLE

MODEL STATISTICS

Dimensions: 109 x 93 x 29 (LxWxH)

Brick Count: 27,208 bricks

Hours to Build: 160

Weight: 118kg



MACAWS IN TREE

MODEL STATISTICS

Dimensions: 60 x 60 x 170 (LxWxH)

Brick Count: 7,226 bricks

Hours to Build: 48

Weight: 40kg



ORANGUTAN

MODEL STATISTICS

Dimensions: 73 x 118 x 165 (LxWxH)

Brick Count: 49,322 bricks

Hours to Build: 180

Weight: 212kg



SNOW LEOPARD

MODEL STATISTICS

Dimensions: 66 x 113 x 95 (LxWxH)

Brick Count: 37,264 bricks

Hours to Build: 101

Weight: 137kg



TASMANIAN DEVIL

MODEL STATISTICS

Dimensions: 78 x 78 x 52 (LxWxH)

Brick Count: 10,916 bricks

Hours to Build: 50

Weight: 17kg



INTERACTIVE HEAD-IN HOLE SELFIE ZONE

MODEL STATISTICS

Dimensions: 90 x 192 x 129cm (LxWxH)

Brick Count: 38,400 bricks

Hours to Build: 90

Weight: 71.5kg



INTERACTIVE JEEP SELFIE ZONE

MODEL STATISTICS

Dimensions: 140 x 98 x 131 (LxWxH)

Brick Count: 71,454 bricks

Hours to Build: 248

Weight: 258.5kg



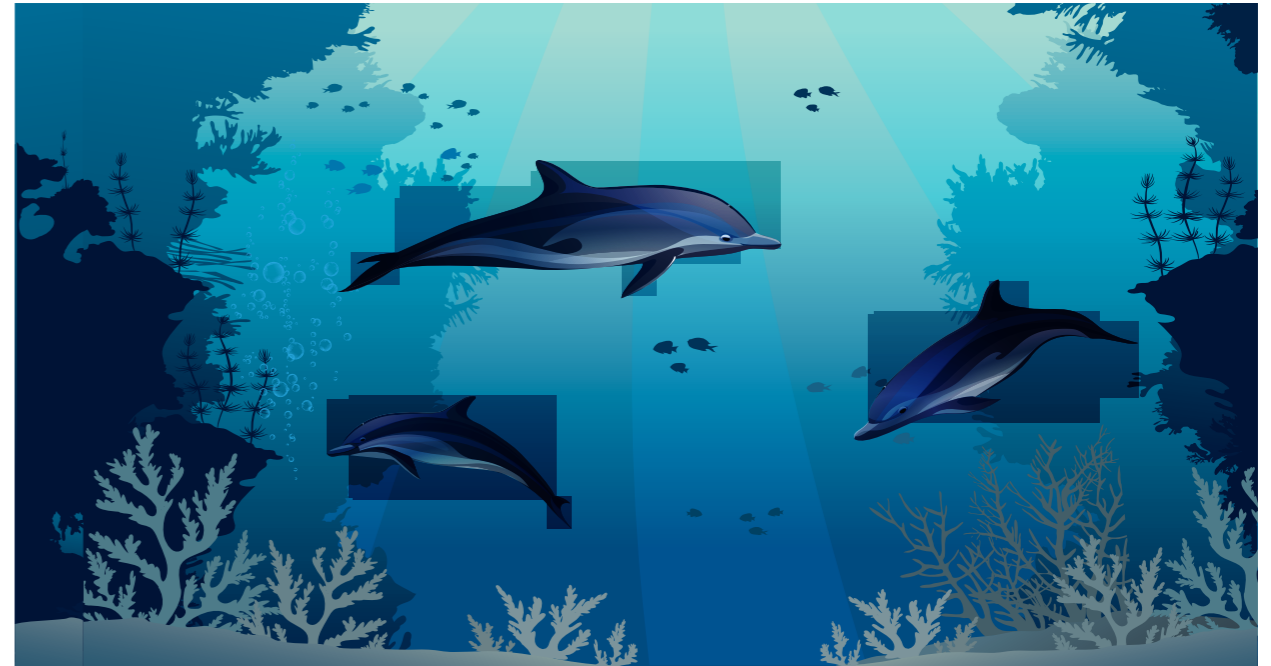
MODEL LIST	Length (cm)	Width (cm)	Height (cm)	Brick Count
x1 African Lion	131	88	135	50,349
x1 African Wild Dog	68	42	103	12,871
x1 Bengal Tiger	231	131	236	81,350
x1 Blue Fin Tuna	129	44	46	7,742
x1 Dolphin	126	61	128	22,298
x1 Emperor Penguin	57	52	118	22,578
x1 Giant Panda	102	132	132	62,351
x1 Gorilla	88	96	118	42,659
x1 Green Sea Turtle	109	93	29	27,208
x1 Macaws	60	60	170	7,226
x1 Orangutan	73	118	165	49,322
x1 Snow Leopard	66	113	95	37,264
x1 Tasmanian Devil	78	78	52	10,916
x1 Head-in-the-Hole Selfie Zone	90	192	129	38,400
x1 Jungle Jeep Selfie Zone	140	98	131	71,454

BACKDROPS



BACKGROUNDS AND GRAPHICS

BRICKLIVE can provide a whole range of various backgrounds and graphics to compliment your model trail/exhibition.



CASE STUDIES





CROYDON BID

Centrale and Whitgift Shopping Centre, in partnership with Croydon BID, played host to ANIMAL PARADISE to create an exclusive wildlife kingdom. From 21st August to 8th September 2019, ANIMAL PARADISE brought to life an incredible display of some of the world's most beautiful, endangered species.

"We're extremely proud to be welcoming Animal Paradise to Centrale & Whitgift from the 21st August to the 8th September. It's a very exciting time for us to be hosting this unique pop-up experience to the centre. We want to continue bringing more family experiences to Centrale & Whitgift, and think our visitors will have great fun creating photos and playing with the bricks at Animal Paradise!"

David Ordman,
General Manager at Centrale Shopping Centre



white rose
shopping centre



WHITE ROSE SHOPPING CENTRE, LEEDS

White Rose Shopping Centre welcomed some exotic visitors to Leeds in summer 2019. White Rose created a trail map around their shopping centre and included questions to answer on each model about the animal or habitat, making it a fun, educational experience for their visitors.

“We can't wait to see our visitors' reactions to spotting these incredible creations in White Rose. The animals really are breath-taking – who wouldn't be surprised by an African lion or gorilla outside Cineworld, by the play area”?

Steven Foster,
General Manager at White Rose Shopping Centre



CONTACT US

info@bricklivegroup.com