

GUBI

SPRING 2026 COLLECTION



GUBI

P3 LOUNGE CHAIR AND P3S CHAISE LONGUE

BY TITO AGNOLI



EXCLUSIVE DISTRIBUTION

IN-STORE AVAILABILITY & EMBARGO DATE: APRIL 9 2026

SPRING 2026



INDOOR COLLECTION



P3 LOUNGE CHAIR

Recommended Retail Prices:
€ 1,099 / \$ 1,699 / DKK 7,999

Colorway:
Rattan



P3S CHAISE LONGUE

Recommended Retail Prices:
€ 1,399 / \$ 2,099 / DKK 10,999

Colorway:
Rattan

OUTDOOR COLLECTION



P3 OUTDOOR LOUNGE CHAIR

Recommended Retail Prices:
€ 1,199 / \$ 1,799 / DKK 8,999

Colorway:
Natural Tone



P3S OUTDOOR CHAISE LONGUE

Recommended Retail Prices:
€ 1,499 / \$ 2,299 / DKK 11,999

Colorway:
Natural Tone

PRODUCT INFORMATION

IN STORES

Available from April 2 2026

RECOMMENDED RETAIL PRICES

P3 Lounge Chair:

7,999 DKK / 11,999 SEK / 12,999 NOK
999 GBP / 1,099 EUR / 2,299 AUD / 1,699 USD

P3 Outdoor Lounge Chair:

8,999 DKK / 12,999 SEK / 13,999 NOK
1,099 GBP / 1,199 EUR / 2,499 AUD / 1,799 USD

P3S Chaise Longue:

10,999 DKK / 14,999 SEK / 16,999 NOK
1,299 GBP / 1,399 EUR / 2,999 AUD / 2,099 USD

P3S Outdoor Chaise Longue:

11,999 DKK / 15,999 SEK / 17,999 NOK
1,399 GBP / 1,499 EUR / 3,199 AUD / 2,299 USD

DIMENSIONS

P3 Lounge Chair / P3 Outdoor Lounge Chair:

Length: 105 cm / 41,34 in
Height: 66 cm / 25,98 in
Width: 63 cm / 24,8 in

TOTAL WEIGHT 14.83 kg / 32.70 lbs (indoor)
TOTAL WEIGHT 15.23 kg / 33.58 lbs (outdoor)

P3 Chaise Longue / P3S Outdoor Chaise Longue

Length: 167,5 cm / 65,96 in
Height: 66 cm / 25,98 in
Width: 63 cm / 24,8 in

TOTAL WEIGHT 23.23 kg / 51.22 lbs (Indoor)
TOTAL WEIGHT 23.23 kg / 51.22 lbs (outdoor)

MATERIALS

Indoor: Galvanized steel, natural rattan

Outdoor: Galvanized steel, high-density polyethylene (HDPE) in a natural tone

SUSTAINABILITY

Indoor: Rattan is incredibly fast-growing and climbs up tree trunks, providing an incentive to preserve ancient forests. These factors combined with the longevity of the material – a carefully constructed rattan chair can last for over a century – make this a very sustainable choice. Parts can be separated and sorted for recycling.

Outdoor: As synthetic rattan is plastic-based, its long lifespan and minimal maintenance significantly extend product longevity and reduce resource use. Parts can be separated and sorted for recycling.

PRODUCT SUMMARY

Designed in 1964 by architect and designer Tito Agnoli for the Italian masters of rattan craft, Bonacina 1889, the P3 Lounge Chair and P3S Chaise Longue combine sculptural elegance, refined modernism, and ergonomic comfort. Formed from handwoven rattan strips fixed to a continuous tubular galvanized-steel frame, the P3 and P3S represent the highest level of rattan craft, beautifully showcasing the material's natural warmth and texture. In close collaboration with Bonacina 1889, GUBI introduces both pieces in outdoor-ready variants, bringing Agnoli's visionary forms into exterior environments for the first time, and, in the process, introducing GUBI's first sun lounger. Together, they create a cohesive aesthetic across indoor and outdoor spaces – a sculptural expression of crafted comfort, wherever they are placed.

USPs

- **Sculptural and timeless:** Tito Agnoli's architectural clarity and elegant sense of proportion give the P3 and P3S a striking, sinuous silhouette that transcends trends and harmonizes with any indoor or outdoor environment.
- **In and out:** Faithful to Bonacina 1889's archival drawings, GUBI has reimagined Tito Agnoli's vision in an outdoor-friendly format. The weather-, UV-, and humidity-resistant synthetic rattan editions, in a natural tone, extend the warmth and texture of rattan to exterior settings, making the P3S the first GUBI sun lounger.
- **A showcase of craft:** Pioneered by Bonacina 1889, the artistry behind each P3 or P3S is extraordinary. Every piece requires several days of meticulous handweaving, a process that imbues the design with strength and character.

A close-up photograph of a wooden chair with a cane backrest and seat. The chair is made of light-colored wood and features a woven cane pattern. The backrest is rectangular with rounded corners, and the seat is also rectangular with rounded corners. The chair is set against a plain, light-colored background.

GUBI

C-CHAIR OUTDOOR IN FRENCH CANE

BY MARCEL GASCOIN

IN-STORE AVAILABILITY & EMBARGO DATE: MARCH 12 2026

SPRING 2026





C-CHAIR OUTDOOR DINING CHAIR

Recommended Retail Prices:
€ 699 / \$ 1,099 / DKK 4,999

Seat:
Outdoor-friendly French Cane

Base:
Natural Teak



C-CHAIR OUTDOOR DINING CHAIR

Recommended Retail Prices:
€ 699 / \$ 1,099 / DKK 4,999

Seat:
Cord

Base:
Natural Teak



F-CHAIR OUTDOOR LOUNGE CHAIR

Recommended Retail Prices:
€ 899 / \$ 1,399 / DKK 6,999

Seat:
Cord

Base:
Natural Teak

C-CHAIR OUTDOOR IN FRENCH CANE



PRODUCT INFORMATION

IN STORES

Available from March 12 2026

RECOMMENDED RETAIL PRICES

4,999 DKK / 7,699 SEK / 8,099 NOK
599 GBP / 699 EUR / 1,499 AUD / 1,099 USD

DIMENSIONS

Width: 41 cm / 16.1 in
Depth: 53 cm / 20.9 in
Height: 81 cm / 31.9 in
Seat width: 41 cm / 16.1 in
Seat depth: 42 cm / 16.5 in
Seat height: 48 cm / 18.9 in
Backrest height: 39 cm / 15.4 in

TOTAL WEIGHT

5.7 kg / 12.6 lbs

MATERIALS

Solid teak frame with woven seat and backrest in high-performance French cane made from high-density polyethylene. Suitable for outdoor.

TEST & CERTIFICATES

EN 581 L 3 Outdoor Furniture. Strength and mechanical safety requirements for contract use.

SUSTAINABILITY

The C-Chair only uses farmed plantation teak with SVLK certification, which ensures biodiversity, sustainable forestry practices, and provides additional economic benefits to the local economy.

PRODUCT SUMMARY

Marcel Gascoïn's modernist classic, the C-Chair, is reimagined for outdoor living, crafted from solid teak and outdoor-friendly French cane. Preserving the balanced proportions and refined simplicity of the 1947 design, the C-Chair outdoor edition combines elegance and durability for contemporary living. Its slender silhouette and compact scale make it ideal for terraces, gardens, and balconies – perfect for gathering more guests around the table or where space is limited. The six-way woven French cane made from high-density polyethylene is handwoven, capturing the airy lightness and warm tactility of the indoor version. Functional, resilient, and timeless, the C-Chair outdoor edition embodies Gascoïn's enduring belief that good design should elevate everyday life.

USPs

- **Modernist design, made for the open air:** Marcel Gascoïn's 1947 C-Chair is reimagined for outdoor living, preserving its refined simplicity while embracing materials suited to the elements.
- **Handwoven outdoor performance:** The seat and backrest are handwoven in a high-performance material made from high-density polyethylene, offering the warmth and tactility of natural cane with enduring durability.
- **Solid teak foundation:** A frame crafted from teak provides inherent strength, stability, and natural weather resistance, developing a silvery patina over time.

GUBI

GRACE OUTDOOR CHAIR IN NATURAL TONE

BY TOVE KINDT-LARSEN

IN- STORE AVAILABILITY & EMBARGO DATE: MARCH 12 2026

SPRING 2026



COLLECTION OVERVIEW

OUTDOOR



GRACE OUTDOOR LOUNGE CHAIR

Recommended Retail Prices:
From: € 1,999 / \$ 2,699 / DKK 14,999

Colorway:
Natural Tone

Upholstery:
Seat: Plutarco 221, Back: Plutarco 221



GRACE OUTDOOR LOUNGE CHAIR

Recommended Retail Prices:
From: € 1,999 / \$ 2,699 / DKK 14,999

Colorway:
Black

Upholstery:
Seat: Lorkey 41, Back: Lorkey 43



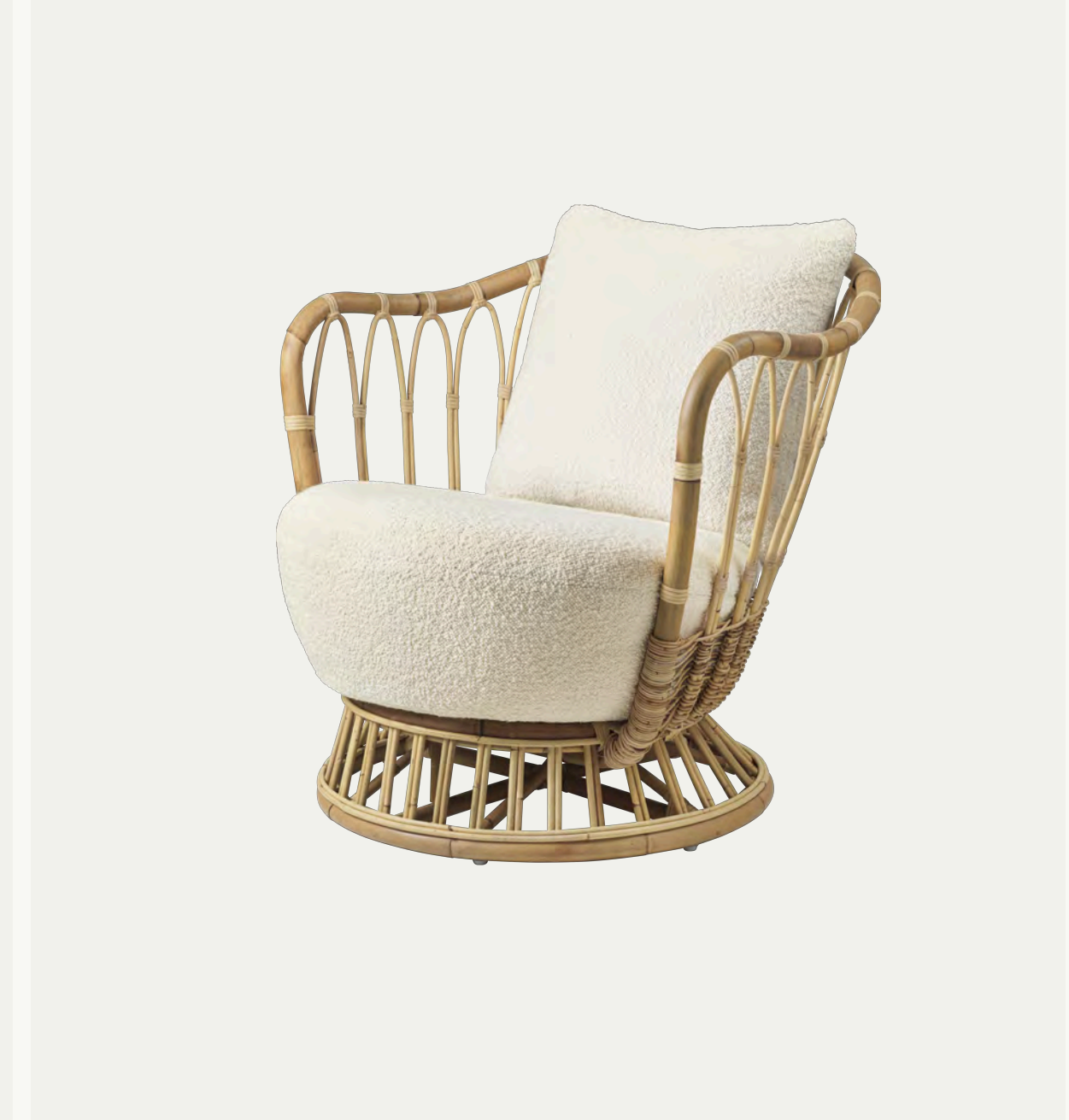
GRACE OUTDOOR LOUNGE CHAIR

Recommended Retail Prices:
From: € 1,999 / \$ 2,699 / DKK 14,999

Colorway:
Mushroom Gray

Upholstery:
Seat: Lorkey 41, Back: Lorkey 44

INDOOR



GRACE LOUNGE CHAIR

Recommended Retail Prices:
From: € 1,799 / \$ 2,499 / DKK 12,999

Colorway:
Natural Rattan

Upholstery:
Seat: Karakorum 001, Back: Karakorum 001

GRACE OUTDOOR CHAIR IN NATURAL TONE



CURATED UPHOLSTERIES



Plutarco 221



Plutarco 158

PRODUCT INFORMATION

IN STORES

Available from March 12 2026

RECOMMENDED RETAIL PRICES

Starting from:

14,999 DKK / 21,999 SEK / 22,999 NOK
1,799 GBP / 1,999 EUR / 3,999 AUD / 2,699 USD

DIMENSIONS

Width: 80 cm / 31.4 in
Depth: 75 cm / 29.5 in
Height: 74 cm / 29.1 in
Seat Width: 65 cm / 25.6 in
Seat Depth: 60 cm / 23.6 in
Seat Height: 43 cm / 16.9 in
Backrest Height: 45 cm / 17.7 in
Armrest Height 28 cm / 11 in

TOTAL WEIGHT

9.50 kg / 20.95 lbs

MATERIALS

Chair: aluminum, high-density polyethylene (HDPE) fibers

Cushion: foam, water-resistant interliner

Upholstery options: <https://gubi.com/upholstery>

Suitable for outdoor.

COLORWAYS

Natural Tone, Mushroom Gray, Alabaster White, Black

SUSTAINABILITY

Parts can be separated and sorted for recycling.

As synthetic rattan is plastic-based, its long lifespan and minimal maintenance significantly extend product longevity and reduce resource use.

PRODUCT SUMMARY

The Grace Outdoor Lounge Chair in a natural-tone weave reinterprets Tove Kindt-Larsen's 1936 design in a high-performance synthetic fiber that evokes the warmth and texture of natural rattan. Handwoven and hand-fished by skilled artisans, its soft honey tone, painted nodes, and subtle tonal variations bring crafted depth to outdoor settings. Lightweight and durable, the aluminum frame and airy, organic silhouette invite a sense of calm and tactility to terraces, gardens, and hospitality spaces alike.

USPs

- **Natural look, outdoor performance:** A high-performance synthetic weave with hand-painted nodes recreates the warmth and nuance of natural rattan, while delivering full weather resistance.
- **Handcrafted with enduring strength:** Expertly woven by Indonesian artisans and supported by a lightweight aluminum frame with concealed metal pillars for long-lasting stability.
- **Durable materials for long life:** Synthetic rattan and powder-coated aluminum minimize maintenance, extend longevity, and reduce replacements and resource use.

GUBI

OBELLO IN COLORS

BY BILL CURRY

IN-STORE AVAILABILITY & EMBARGO DATE: FEBRUARY 19 2026

SPRING 2026





OBELLO PORTABLE LAMP

Recommended Retail Prices:
€ 299 / \$ 399 / DKK 1,999

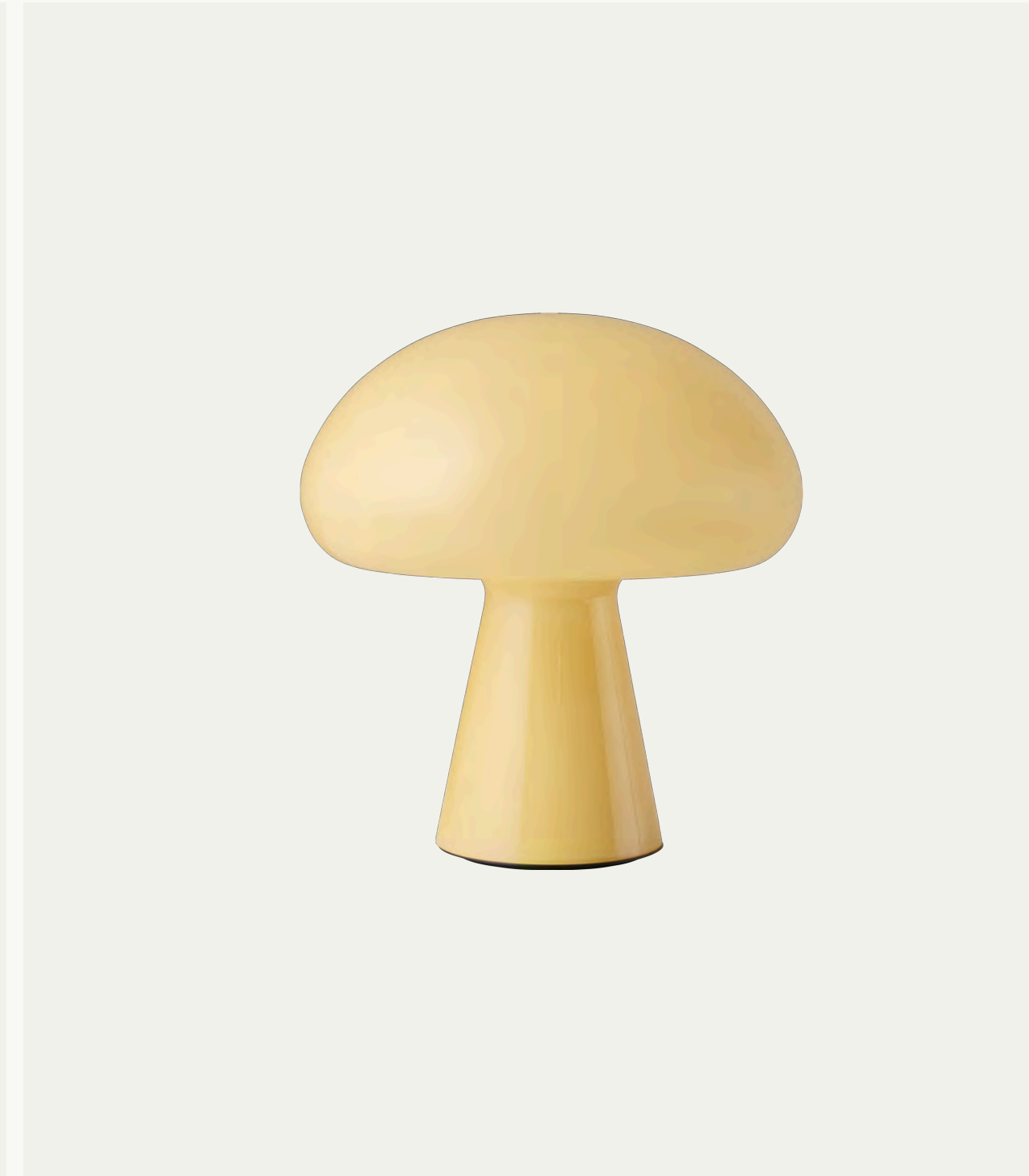
Colorway:
Soft Pink



OBELLO PORTABLE LAMP

Recommended Retail Prices:
€ 299 / \$ 399 / DKK 1,999

Colorway:
Pearl White



OBELLO PORTABLE LAMP

Recommended Retail Prices:
€ 299 / \$ 399 / DKK 1,999

Colorway:
Mellow Yellow



PRODUCT INFORMATION

RECOMMENDED RETAIL PRICES

1,999 DKK / 3,299 SEK / 3,499 NOK
299 GBP / 299 EUR / 599 AUD / 399 USD

DIMENSIONS

Lamp height: 24 cm / 9.45 in
Base: 10 cm / 3.94 in
Shade diameter: 22 cm / 8.66 in
Cord length: 100 cm / 39.37 in

TOTAL WEIGHT

1,16 kg

COLORWAYS

Mellow Yellow, Powder Pink, and Pearl White.

MATERIALS

Opal mouth-blown glass with glossy water-based lacquer finish, powder-coated steel and ABS plastic base, integrated dimmable LED system, high-capacity lithium battery.

TEST & SPECIFICATIONS

While Obello should always be stored and charged indoors, it is splash-proof, meaning it can withstand the occasional rain shower and is resilient against sand and soil.

CERTIFICATIONS

Certification:



Isolation Class: III

IP Classification: 65

This portable lamp can be sold in China with exemption of CCC certification.

DIMMING / CHARGING

Dimmer switch positions:

- Off
- Light at 20% (23 lumens)
- Light at 50% (92 lumens)
- Lights at 100% (193 lumens)

Full charge from 0%-100% in 6 hours.
The lamp can be used while charging, which extends charging time.

The charge will last different lengths of time depending on the brightness:

- Light at 20% = 58 hrs
- Light at 50% = 34 hrs
- Light at 100% = 16 hrs

ELECTRICAL SPECIFICATIONS

Bulb: LED integrated - 2,5 W - 200 lm

Switch: Touch on/off, and dimmable on base

Voltage: 5V - 1000 mAh

Bulb Included: Yes

Plug Type: USB-C / USB 2.0

NOTE

While Obello should always be stored and charged indoors, it is splash-proof, meaning it can withstand the occasional rain shower and is resilient against sand and soil. Designed to move with you, it brings ambience to interiors and atmosphere to outdoor spaces alike.

PRODUCT SUMMARY

Designed in 1962, Bill Curry's debut and bestselling design, the Stemplite, captures the spirit of mid-century modernism with its slender stem and floating globe. This edition returns to the lamp's original opal glass shade, infusing two table and two floor designs with renewed luminosity and warmth. Each mouth-blown globe diffuses light softly and evenly, casting a welcoming ambient glow. Paired with stems in Black Chrome, Pebble Gray, or Black Red, the Stemplite's sculptural silhouette is both graphic and graceful, remaining as relevant today as it was in the Space Age.

USPs

- **Portable and versatile:** Lightweight and cordless, Obello moves easily between indoor and outdoor spaces. The stem doubles as a handle, making it simple to carry from room to room or out to the terrace, balcony, or garden.
- **Crafted with care:** Made from opal mouth-blown glass and hand-finished with a glossy, water-based lacquer, each Obello may feature subtle artisanal variations that make it unique.
- **Designed for modern living:** Durable, rechargeable, and splash-proof, the Obello is powered by a high-capacity lithium battery that delivers up to 16 hours of light at full intensity.

GUBI

F300 LOUNGE CHAIR IN MOLÉ
BY PIERRE PAULIN

EXCLUSIVE DISTRIBUTION

IN-STORE AVAILABILITY & EMBARGO DATE: MAY 21 2026

SPRING 2026





F300 LOUNGE CHAIR

Recommended Retail Prices:
From: € 1,999 / \$ 2,599 / DKK 14,999 DKK

Colorway:
Molé



F300 LOUNGE CHAIR

Recommended Retail Prices:
From: € 1,999 / \$ 2,599 / DKK 14,999 DKK

Colorway:
Alabaster White



F300 LOUNGE CHAIR

Recommended Retail Prices:
From: € 1,999 / \$ 2,799 / DKK 14,999 DKK

Colorway:
Pastel Green



T877 SIDE TABLE

Recommended Retail Prices:
€ 299 / \$ 419 / DKK 2,299

Colorways:
Molé, Alabaster White, Pastel Green,
Honey Gold, Violet Ice

F300 LOUNGE CHAIR IN MOLÉ



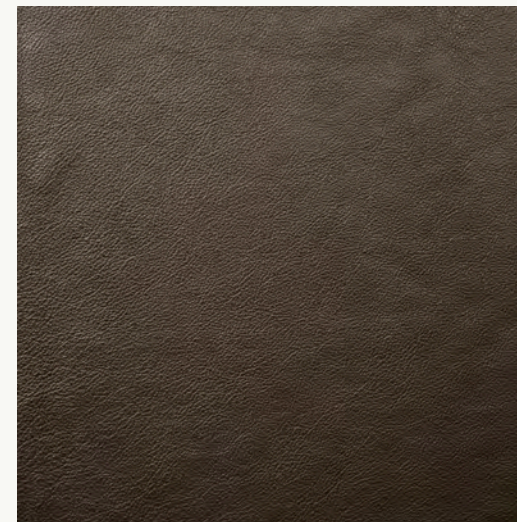
CURATED UPHOLSTERIES



Alpac Alto 015



Alberobello 002



Smooth Leather Coffee 006

PRODUCT INFORMATION

IN STORES

Available from May 21 2026

RECOMMENDED RETAIL PRICES

Starting from:

14,999 DKK / 21,999 SEK / 22,999 NOK
1,799 GBP / 1,999 EUR / 3,999 AUD / 2,599 USD

DIMENSIONS

Width: 80 cm / 31,5 in
Depth: 69 cm / 27,2 in
Height: 61 cm / 24 in

TOTAL WEIGHT

14 kg / 30,87 lbs

MATERIALS

Injection-molded HiREK[®] polymer,
with various upholstery options.
Foam (CA TB 117-2013 Compliant)

COLORWAYS

Molé, Alabaster White, Pastel Green

SUSTAINABILITY

HiREK is 100% recyclable. The internal part contains
20% to 30% of plastic material recycled from industrial
waste.

PRODUCT SUMMARY

Originally designed by Pierre Paulin in the late 1960s and reissued by GUBI in 2025, the F300 Lounge Chair embodies his sculptural approach to seating. Crafted in Italy from HiREK[®], a high-performance polymer made from industrial waste, the chair combines futuristic curves with architectural clarity. The introduction of Molé – a dark, rich brown inspired by Paulin’s original palette – shifts the focus from upholstery to structure, grounding the design with depth and presence while offering a bold alternative to the lighter tones in the collection. Versatile, durable, and visually striking, the F300 in Molé is a timeless addition to contemporary interiors, bridging 1960s modernism with today’s material innovation.

USPs

- **A new depth of color:** Molé introduces a dark, rich brown tone inspired by the deeper hues in Pierre Paulin’s original palette, transforming his sculptural 1960s icon and completing a light-to-dark spectrum that reveals the full power of its fluid silhouette.
- **Crafted in HiREK[®]:** Formed in Italy from HiREK[®], a high-performance polymer made from industrial plastic waste, the F300 delivers exceptional structural definition and a smooth, high-gloss surface that accentuates every curve.
- **Material richness and tactile balance:** Curated upholstery complements Molé’s depth, enhancing the chair’s sculptural presence through color and texture combinations.



GUBI

PEDRERA IN STRUCTURED GLASS

BY BARBA CORSINI

IN-STORE AVAILABILITY & EMBARGO DATE: FEBRUARY 19 2026

SPRING 2026



COLLECTION OVERVIEW



PEDRERA COFFEE TABLE

Recommended Retail Prices:
From: € 1,199 / \$ 1,999 / DKK 8,999

Top:
Transparent, Structured Glass

Base:
Steel frame in Black, Brass or Chrome



PEDRERA COFFEE TABLE

Recommended Retail Prices:
From: € 1,199 / \$ 1,999 / DKK 8,999

Top:
Bronze, Structured Glass

Base:
Steel frame in Black, Brass or Chrome



PEDRERA COFFEE TABLE

Recommended Retail Prices:
From: € 1,199 / \$ 1,999 / DKK 8,999

Top:
Smoke, Structured Glass

Base:
Steel frame in Black, Brass or Chrome



PEDRERA COFFEE TABLE

Recommended Retail Prices:
From: € 999 / \$ 1,599 / DKK 7,999

Top:
Transparent

Base:
Steel frame in Black, Brass or Chrome

PEDRERA IN STRUCTURED GLASS



PRODUCT INFORMATION

IN STORES

Available from February 19 2026

RECOMMENDED RETAIL PRICES

Starting from:

8,999 DKK / 12,999 SEK / 13,999 NOK

1,199 GBP / 1,199 EUR / 2,499 AUD

1,999 USD

DIMENSIONS

Length: 106 cm / 41.7 in

Width: 86 cm / 33.8 in

Height: 38 cm / 14.9 in

TOTAL WEIGHT

16,2 kg / 35.7 lbs

MATERIALS

Structured glass, steel frame in black, brass, or chrome

PRODUCT SUMMARY

Designed by Barba Corsini in 1955, the Gaudí-inspired Pedrera Coffee Table features a sculptural steel base and organically rounded glass top, echoing the undulating forms of Casa Milà. The design is reimagined with structured glass tops in three luminous finishes: Transparent, Smoke, and Bronze with frames in black, chrome, or brass. Crafted in Italy using traditional glass-fusing technique, each tabletop features a rippled underside that plays with light and reflection. Made from tinted glass with a dyed-through finish, this process preserves the glass's natural luminosity and transparency while preventing surface wear. Tempered for strength and durability, the structured glass tops bring texture, color, and sensory depth to Corsini's celebrated design, enriching its architectural character while maintaining its timeless elegance.

Re-edited by Galeria H20 in 1991 under the supervision of Joaquim Ruiz Millet, the Pedrera Coffee Table continues to unite architecture, craft, and modern design in enduring form.

USPs

- **Crafted through glass fusing:** Made in Italy, each top is formed through traditional glass fusing, naturally sagging into a handmade mold to create a sculptural underside and a smooth, refined surface.
- **Three luminous colorways:** Transparent, Smoke, and Bronze offer a spectrum from pure clarity to cool gray and rich brown, shifting subtly with the light.
- **Material richness and artisanal detail:** The dual-surface glass softens reflections and reveals the V-shaped steel frame below. Each top is cut, fused, and tempered for lasting strength.

COLORWAYS



Transparent



Bronze



Smoke

GUBI

STEMLITE IN OPAL

BY BILL CURRY





STEMLITE TABLE LAMP, H42

Recommended Retail Prices:
€ 599 / \$ 889 / DKK 4,499

Colorways:
Black Chrome, Pebble Gray or Black Red

Shade:
Opal Shade, Ø32



STEMLITE FLOOR LAMP, H110

Recommended Retail Prices:
€ 899 / \$ 1,499 / DKK 5,999

Colorways:
Black Chrome, Pebble Gray or Black Red

Shade:
Opal Shade, Ø38



STEMLITE FLOOR LAMP, H150

Recommended Retail Prices:
€ 999 / \$ 1,699 / DKK 6,999

Colorways:
Black Chrome, Pebble Gray or Black Red

Shade:
Opal Shade, Ø38



STEMLITE WALL LAMP

Recommended Retail Prices:
€ 599 / \$ 889 / DKK 3,999

Colorways:
Black Chrome

Shade:
Opal Shade, Ø32

STEMLITE IN OPAL

PRODUCT INFORMATION

IN STORES

Available from April 16 2026

RECOMMENDED RETAIL PRICES

H42

4,499 DKK / 6,599 SEK / 6,999 NOK
599 GBP / 599 EUR / 889 USD

H110

5,999 DKK / 9,899 SEK / 9,999 NOK
799 GBP / 899 EUR / 1,499 USD

H150

6,999 DKK / 10,999 SEK / 11,999 NOK
899 GBP / 999 EUR / 1,699 USD

Wall Lamp

3,999 DKK / 6,599 SEK / 6,999 NOK
499 GBP / 599 EUR / 889 USD

MATERIALS

Mouth-blown opal glass shade with a glossy finish. Powder-coated steel stem and die-cast metal base. Textile-covered electrical cord.

COLORWAYS

Stem: Black Chrome, Pebble Gray, Black Red.

TEST & CERTIFICATIONS

Certification:



Isolation Class: II

IP Classification: 20

DIMENSIONS

H42

Lamp height: 42 cm / 16.5 in

Lamp stand: Ø18 cm / 7 in

Shade diameter: Ø32 cm / 12.6 in

Shade height: 17 cm / 6.7 in

Cord length: 220 cm / 86.6 in

Total Weight: 3.6 kg

H110

Lamp height: 110 cm / 43.3 in

Lamp stand: Ø18 cm / 7 in

Shade diameter: Ø38 cm / 15 in

Shade height: 17 cm / 6.7 in

Cord length: 220 cm / 86.6 in

Total Weight: 7.9 kg

H150

Lamp height: 150 cm / 59 in

Lamp stand: Ø18 cm / 7 in

Shade diameter: Ø38 cm / 15 in

Shade height: 17 cm / 6.7 in

Cord length: 220 cm / 86.6 in

Total Weight: 8.2 kg

STEMLITE WALL LAMP

Lamp height: 70 cm / 27.5 in

Lamp stand: Ø18 cm / 7 in

Shade diameter: Ø32 cm / 15 in

Shade height: 17 cm / 6.7 in

Cord length: 220 cm / 86.6 in

ELECTRICAL SPECIFICATIONS

Bulb Socket: E27/E26

Recommended Bulb: Frosted bulb, 5W LED, 450 - 500 lumen, Max 10W LED

Switch: Rotary on/off, and dimmable on base

Voltage: 240V/120V

Bulb Included: No

Plug Type: EU - Type C, 2pin / US - Type A, 2 Pin

PRODUCT SUMMARY

Designed in 1962, Bill Curry's debut and bestselling design, the Stemplite, captures the spirit of mid-century modernism with its slender stem and floating globe. This edition returns to the lamp's original opal glass shade, infusing one table lamp, two floor lamps, and one wall lamp with renewed luminosity and warmth. Each mouth-blown globe diffuses light softly and evenly, casting a welcoming ambient glow. Paired with stems in Black Chrome, Pebble Gray, or Black Red, the Stemplite's sculptural silhouette is both graphic and graceful, remaining as relevant today as it was in the Space Age.

USPs

- **Original opal glass reintroduced:** The new opal shade restores Bill Curry's intended materiality, bringing renewed clarity, luminosity, and warmth back to the Stemplite designs.
- **Soft, even light diffusion:** The opal globe evenly distributes light to create a warm, ambient glow suited to both residential and hospitality settings.
- **Handcrafted glass expression:** Each shade is mouth-blown by skilled artisans, so slight natural variations in expression may appear, giving every lamp a unique character.

SPRING 2026 COLLECTION PRICE OVERVIEW

OBELLO IN COLORS



RECOMMENDED RETAIL PRICES

1,999 DKK / 3,299 SEK /
3,499 NOK / 299 GBP /
299 EUR / 599 AUD / 399 USD

ITEM NUMBERS

10147246 - PEARL WHITE
10147243 - POWDER PINK

PEDRERA IN STRUCTURED GLASS



RECOMMENDED RETAIL PRICES

Starting from:
8,999 DKK / 12,999 SEK / 13,999 NOK
1,199 GBP / 1,199 EUR / 2,499 AUD
1,999 USD

ITEM NUMBER

Black Base
10148702 - Transparent, Structured Glass
10148703 - Smoke, Structured Glass
10148704 - Bronze, Structured Glass

Chrome Base

10148699 - Transparent, Structured Glass
10148700 - Smoke, Structured Glass
10148701 - Bronze, Structured Glass

Brass Base

10148705 - Transparent, Structured Glass
10148706 - Smoke, Structured Glass
10148707 - Bronze, Structured Glass

STEMLITE IN OPAL



RECOMMENDED RETAIL PRICES

Stemplite Table Lamp, H42
4,499 DKK / 6,599 SEK / 6,999 NOK
599 GBP / 599 EUR / 889 USD

Stemplite Floor Lamp, H110

5,999 DKK / 9,899 SEK / 9,999 NOK
799 GBP / 899 EUR / 1,499 USD

Stemplite Floor Lamp, H150

6,999 DKK / 10,999 SEK / 11,999 NOK
899 GBP / 999 EUR / 1,699 USD

Stemplite Wall Lamp

3,999 DKK / 6,599 SEK / 6,999 NOK
499 GBP / 599 EUR / 889 USD

ITEM NUMBER

Stemplite Table Lamp, H42
10149878 - Black Chrome / Opal Shade
10149879 - Black Red / Opal Shade
10149880 - Pebble Grey / Opal Shade

Stemplite Floor Lamp, H110

10149863 - Black Chrome / Opal Shade
10149864 - Black Red / Opal Shade
10149865 - Pebble Grey / Opal Shade

Stemplite Floor Lamp, H150

10149872 - Black Chrome / Opal Shade
10149873 - Black Red / Opal Shade
10149874 - Pebble Grey / Opal Shade

Stemplite Wall Lamp

10149901 - Black Chrome / Opal Shade

P3 LOUNGE CHAIR, P3 OUTDOOR LOUNGE CHAIR



RECOMMENDED RETAIL PRICES

P3 Lounge Chair:
7,999 DKK / 11,999 SEK /
12,999 NOK / 999 GBP /
1,099 EUR / 2,299 AUD / 1,699 USD

P3 Outdoor Lounge Chair:

8,999 DKK / 12,999 SEK /
13,999 NOK / 1,099 GBP /
1,199 EUR / 2,499 AUD / 1,799 USD

ITEM NUMBER

10148530 - P3 Lounge Chair
10148532 - P3 Outdoor Lounge Chair

C-CHAIR OUTDOOR CHAIR IN FRENCH CANE



RECOMMENDED RETAIL PRICES

4,999 DKK / 7,699 SEK /
8,099 NOK / 599 GBP /
699 EUR / 1,499 AUD / 1,099 USD

ITEM NUMBER

10148247

GRACE OUTDOOR CHAIR IN NATURAL-TONE



RECOMMENDED RETAIL PRICES

Starting from:
14,999 DKK / 21,999 SEK /
22,999 NOK / 1,799 GBP /
1,999 EUR / 3,999 AUD / 2,699 USD

ITEM NUMBER

10149825 - Upholstery: Plutarco 221
10150204 - Upholstery: Plutarco 158

F300 LOUNGE CHAIR IN MOLÉ



RECOMMENDED RETAIL PRICES

Starting from:
14,999 DKK / 21,999 SEK /
22,999 NOK / 1,799 GBP /
1,999 EUR / 3,999 AUD / 2,599 USD

ITEM NUMBERS

10143799 - Upholstery: Alpaca Alto 015
10150329 - Upholstery: Alberobello 02
10150330 - Upholstery: Smooth Leather, Coffee

P3S CHAISE LONGUE & OUTDOOR CHAISE LONGUE



RECOMMENDED RETAIL PRICES

P3S Chaise Longue:
10,999 DKK / 14,999 SEK /
16,999 NOK / 1,299 GBP /
1,399 EUR / 2,999 AUD / 2,099 USD

P3S Outdoor Chaise Longue:

11,999 DKK / 15,999 SEK /
17,999 NOK / 1,399 GBP /
1,499 EUR / 3,199 AUD / 2,299 USD

ITEM NUMBER

10148529 - P3S Chaise Longue
10148531 - P3S Outdoor Chaise Longue

A photograph of a white wall with a window, a large terracotta vase with a plant, and a brick pillar next to a dark door. The scene is lit with warm, golden light, suggesting late afternoon or early morning. The wall is textured and has a small window with a black metal grille. To the left of the window is a large, two-handled terracotta vase filled with a plant that has long, trailing white flowers. To the right of the window is a brick pillar and a dark door with a metal grille. The ground is paved with light-colored stones.

GUBI