



Mobility & Planning Practice

Middle East

IMAGINE
CREATE
ACHIEVE
a sustainable future

Editorial

2023, a watershed year for Egis

As a company that is both active today and focussed on the future, Egis is capable of living and evolving in step with its times. The provider of technical solutions in a fast-changing world, the Group acts with conviction wherever its expertise is required: the ecological and energy transition naturally, since Egis features among the world leaders in green engineering, but also the future reconstruction of Ukraine, with the country already heavily afflicted by a conflict that continues to drag on.



We have high expectations for 2023. Our group has spent many years preparing to fulfil its foremost ambition: to be among the world's top ten construction engineering firms by 2026. We are making every effort to get there: a new majority shareholder (Tikehau Capital), a new organisation and new market share conquered thanks to a powerful external growth policy. Today we are at the halfway point of our corporate strategic project, Impact the Future, that we launched in 2020. It is now up to us to seize all the opportunities that 2023 will undoubtedly bring and make the next twelve months a true watershed year and the springboard towards a destiny within our grasp.

Laurent Germain,
Egis Group Chief Executive Officer

contents

- 01** . Egis Profile
- 02** . Mobility & Planning
- 03** . Relevant Experience
- 04** . Team
- 05** . Why Egis



Egis Profile.



01.

About Egis

IMAGINE
CREATE
ACHIEVE

a sustainable future

Egis is an international player active in the consulting, construction engineering and mobility service sectors.

We design and operate intelligent infrastructure and buildings capable of responding to the climate emergency and helping to achieve more balanced, sustainable and resilient territorial development.

With operations in 120 countries, Egis places the expertise of its 18,000 employees at the disposal of its clients and develops cutting-edge innovation accessible to all projects. Through its wide-ranging fields of activity, Egis is a central player in the collective organisation of society and the living environment of citizens all over the world.

Our purpose

Improving people's quality of life and supporting communities

in their social and economic development, whilst drastically reducing carbon emissions and achieving vital 2050 net zero targets.

Our values



Our ethics in action



In line with our ethics policies, we will adopt a firm zero-tolerance approach to ethics and compliance issues:

Reinforce ethical behaviour in line with the group's values

Ensure our practices comply with national and international integrity regulations

ISO 37001 CERTIFICATION



Egis' anticorruption management system since 2021



Key figures

€1.48bn

2022 TURNOVER



65%
international

79%
Consulting & engineering



21%
Operation & mobility
services

2022 Turnover

Transportation 62 %
Building, Urban
Development & Energy 38 %



€48 M

DISTRIBUTABLE
NET PROFIT 2022

€176M
EBITDA

28

ROAD OPERATING
COMPANIES

20

AIRPORTS

21

URBAN PARKING
CONTRACTS IN
EUROPE

ENR 21st
ENGINEERING NEWS
RECORD GLOBAL RANKING

1st

FRENCH ENGINEERING
COMPANY

8th

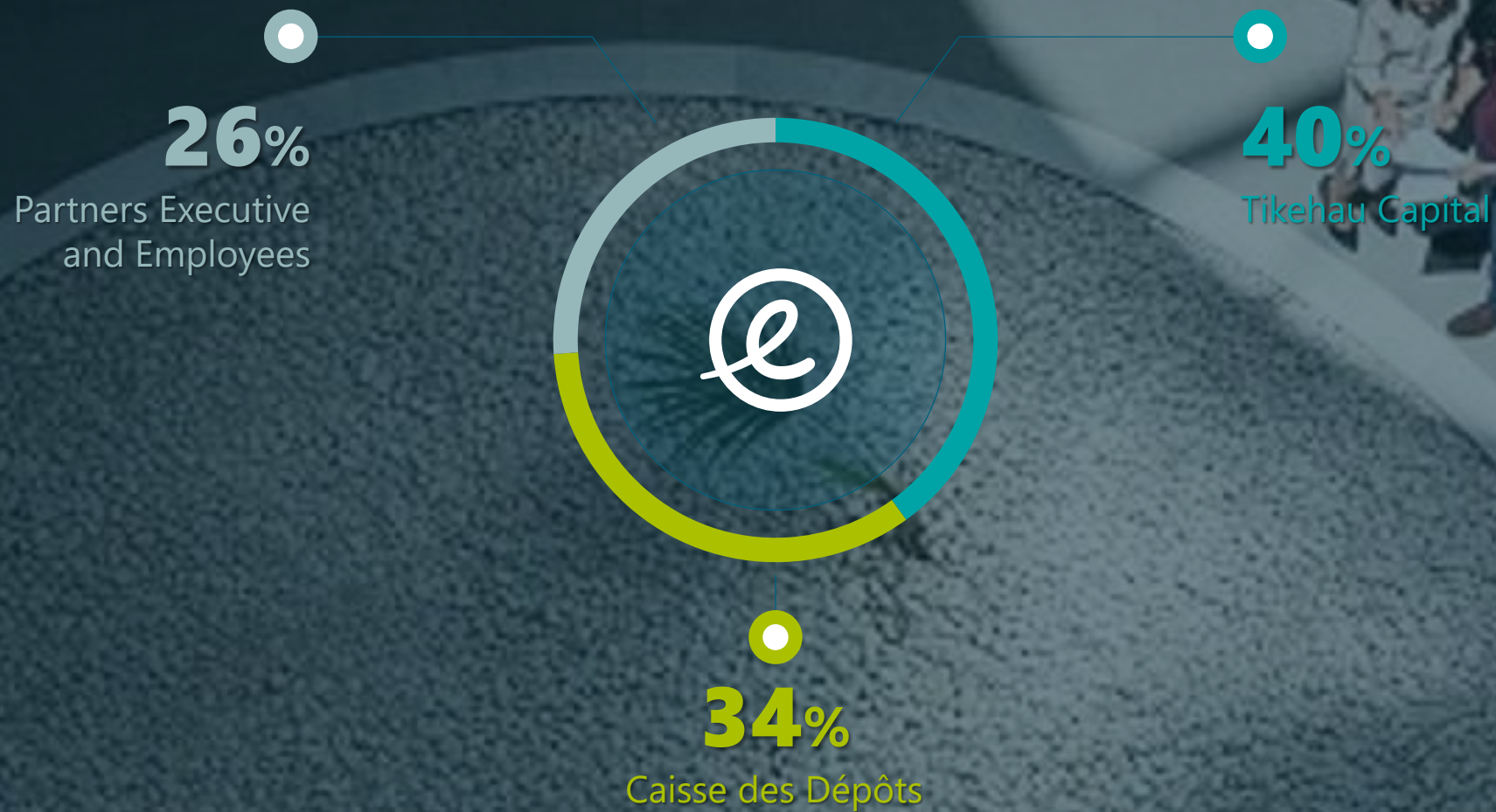
IN TRANSPORTATION
MARKET



18,000
EMPLOYEES
IN THE WORLD

74% Consulting & engineering 26% Operation & mobility services

Our shareholder structure



Our employees in France and abroad



More than 3,000 recruitments in 2022*

EGIS CERTIFIED



A new organization that supports our growth

3 major "Business Lines" organized in "Service Lines" serving 4 "Regions"

Transportation

- Urban Transport & Urban Development
- Intercity Transport
- Structures

Consulting & Operation

- Consulting
- Operation & Maintenance
- Aviation (*consulting and engineering*)
- New services

Energy & Sustainable Cities

- Water & Energy Environment
- Building Engineering Architecture
- Façade & Sustainability Nuclear

Increased
Resource
&
Knowledge
sharing

France

Europe &
Africa

Middle East
& South Asia

Americas &
Pacific

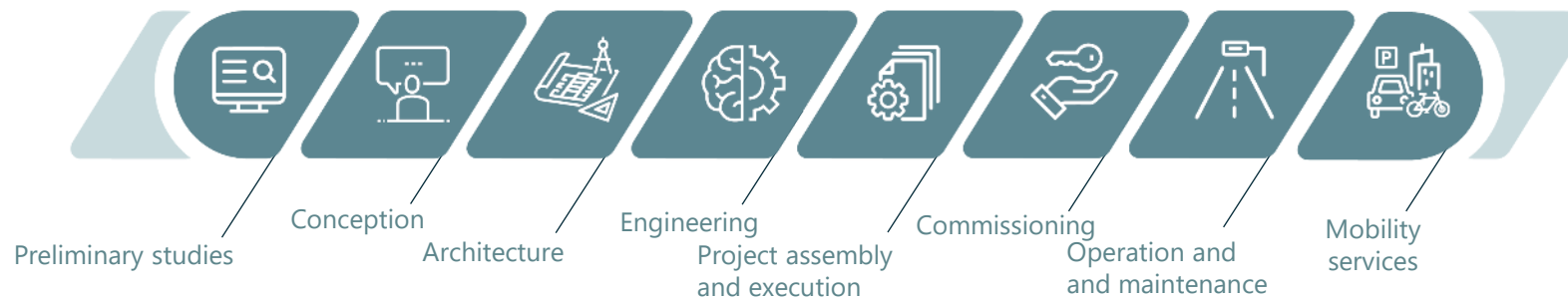
3 Business Lines with shared interests, clients or markets, and enabling better skill and resource management

4 Regions organised according to operational and strategic interests to enable greater proximity with our clients

Our global offer



Throughout the project value chain



Our global offer in details



Mobility

Urban transport

- Metro
- Tram
- Bus
- Cable cars

Intercity and long distance transportation

- Railways
- Roads
- Aviation
- Maritime and river

Structures

- Tunnels
- Bridges and viaducts



Urban and Sustainable living

Buildings

- Shops and offices
- Health
- Sports and events
- Education, culture and administration
- Housing

Water and environment

- Storage, transportation and water treatment
- Protection of biodiversity
- Natural resources
- Air, odours, health
- Littoral



Energy and Industry

Low carbon energy

- Renewable energy
- Nuclear

Industrial facilities

- Automotive
- Aeronautics
- Agrifood
- Pharmaceuticals and chemicals
- Data center
- Logistics

A local international player

NORTH AMERICA

Toronto, Canada
2 countries
1,000 employees

LATIN AMERICA

São Paulo, Brazil
5 countries
2,000 employees

EUROPE

Paris, France
35 countries
7,500 employees

INDIA

New Delhi
2,500 employees

ASIA

Hong-Kong, China
17 countries
900 employees

AUSTRALIA NEW ZEALAND

Melbourne, Australia
2 countries
700 employees

AFRICA

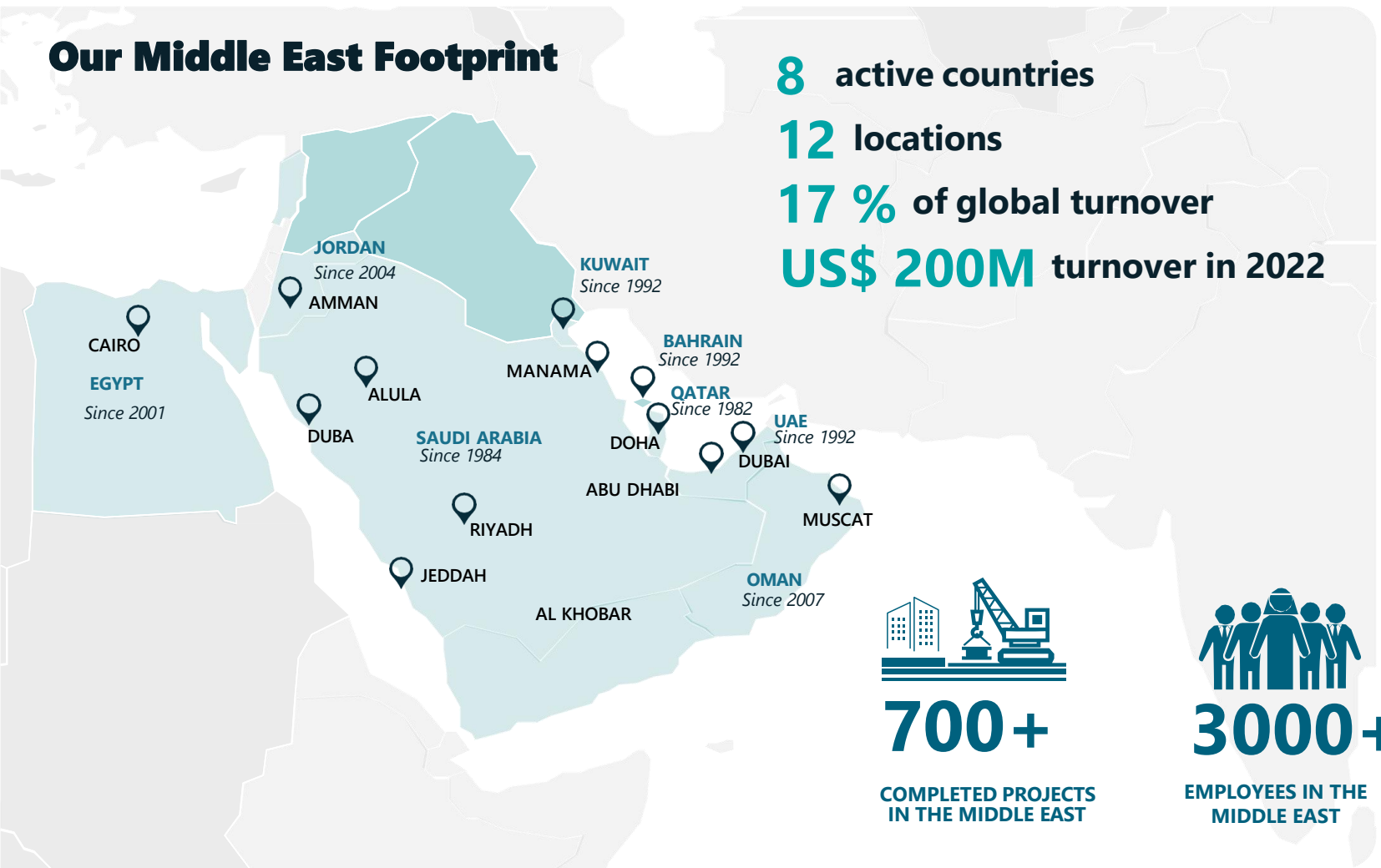
Casablanca, Morocco
11 countries
400 employees

MIDDLE EAST

Dubai, United Arab Emirates
9 countries
3,000 employees

Egis in the Middle East

Our Middle East Footprint



INTERNATIONAL SUBSIDIARIES



MIDDLE EAST SUBSIDIARIES



our awards

**CBNME
MEP
AWARDS
2023**

**MECHANICAL PROJECT OF THE
YEAR INNOVATION PROJECT OF
THE YEAR
(UAE Pavilion Expo2020)**

**Middle East
Consultant
AWARDS
MULTI-
DISCIPLINARY
CONSULTING
COMPANY OF THE YEAR 2022**

**TOP EMPLOYER
OF THE YEAR 2023 - UAE**

**top[®]
EMPLOYER**

**الإمارات العربية
المتحدة
UNITED
ARAB EMIRATES
2023**

CERTIFIED EXCELLENCE IN EMPLOYEE CONDITIONS

**Mechanical
Electrical &
Plumbing AWARDS
2022**

**RETROFIT PROJECT
OF THE YEAR
AWARD
(Atlantis The Palm - Domestic
Hot Water Project)**



Our partnerships

**Egis is a Member/Industry Partner of the
Emirates Green Building Council.**



The Emirates Green Building Council (EmiratesGBC) is an independent forum, formed in 2006 with the goal of advancing green building principles for protecting the environment and ensuring sustainability in the United Arab Emirates. The formation of EmiratesGBC was considered a milestone and a breakthrough towards creating and maintaining a sustainable built-environment and protecting the ecosystem in the UAE, which has become a model for the region to follow.

Our 10 strategic priorities to 2026

01

Contributing to global **carbon neutrality** by 2050

02

Become a **leading industry figure**

03

Accelerate in Egis' most **successful markets and zones**

04

Impose the **transition to a low-carbon future** as the Group's third pillar

05

Place **intelligence** at the heart of cities and mobility

06

Stay **close to our clients**

07

Step up our **development in Southeast Asia**

08

Link up the **chain of expertise**

09

Enhance **technical and digital excellence**

10

Help our employees grow, and continue to attract **new talent**

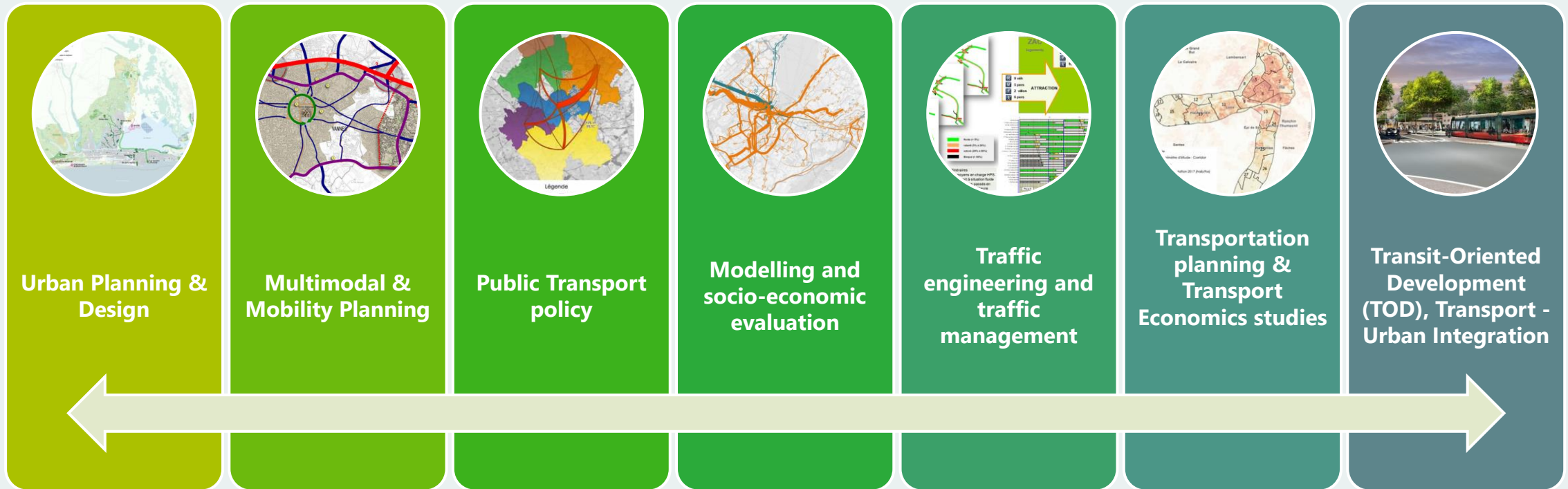


Mobility & Planning.



02.

Our mobility & planning scope of services



Focus on technology, innovation and sustainability

Applied innovation - using our technologies



Transit-Oriented Development (TOD)/ Transport -Urban Integration

MULTI-MODAL INTEGRATION



CONNECTIVITY AND SEAMLESS INTEGRATION



SMART SYSTEMS



Smart mobility & systems activity



From upstream to downstream Consultancy and expertise through to proposals for action

Transport planning and policy

- Upstream infrastructure project studies aimed at policymakers

Institutional and organisational support

- Accompanies changes in the transport sector worldwide

Modelling and social & economic impact assessment

- Expertise in multi-modal modelling

Traffic and multi-modal regulation

- Multi-modal regulation studies and dynamic simulations



Smart mobility & **systems** activity



→ Information systems

- Service approach with information control and dissemination assistance systems
- New mobility (upstream ITS, smart parking, positive tolling)
- Optimisation of operation of strategic/complex infrastructure

→ Digital spatial planning

- PMC – Programme management – Telecom consulting
- Programme management for broadband and highspeed broadband electronic communication infrastructure



Financial advisory & green finance

In addition to the technical support, the consulting team of Egis Conseil can assist its clients from a financial perspective on the following points

1

We develop **feasibility studies** that help to understand if a project is profitable or not.

We help to structure the project to make it **possible** and **bankable**.

1. Overview of the project
2. Technical pros and cons/red flags
3. Financial model scenarios



2

We create **financial models/business plan** that facilitate decision making on:

- Source of **revenues and expenses**
- Project's **duration**
- Defining allocation of **financing sources**
- **Financing** strategy / Capital structure



3

We help our clients to obtain the necessary **financing sources** for their greenfield and brownfield projects *(mostly in France but applicable to other markets, if possible):*

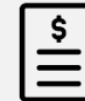
- **Equity** sponsor
- **Commercial/Mezz./Multilateral** debts
- Public **grants**
- **Credit enhancement** guarantees



4

We work along our clients by helping them with **financial analysis** tasks, such as:

- Budget and **prospective analysis**
- Financial performance **analysis in O&M** stage
- Financial **reporting**



5

We assist our clients by providing assistance with the **contract awarding process** and **procurement strategy/contract management**.

- **Risk analysis.**
- Definition of the **PPP models** and selection of the best PPP scheme applicable to a project. *(mostly in France and Europe but applicable to other markets, if possible)*





Relevant Experience

03.

Financial engineering / green finance



Riyadh to Qiddiya Q-Express

Financial Feasibility assessment,
recommendation on optimal tariff
[Ongoing]



Bus fleet electric conversion in Orléans

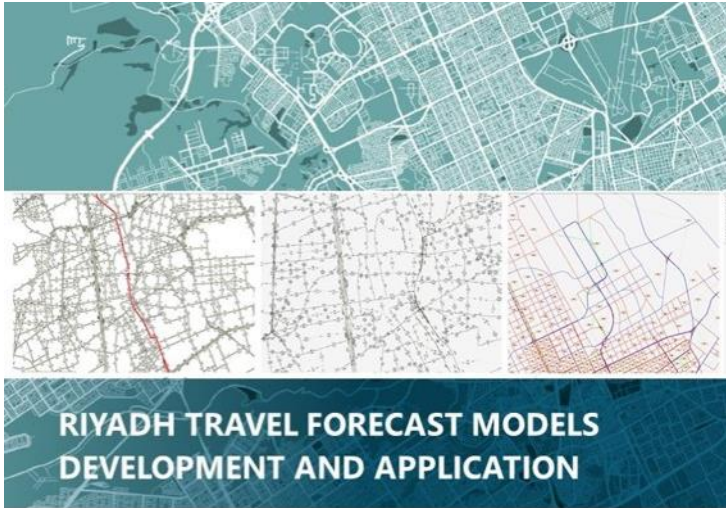
Feasibility study including technical feasibility,
real estate programming & organization
strategy for maintenance centers, economic
and financial feasibility studies, legal and
administrative support for contract awarding
and contract's monitoring and management



Road corridor PPP in Belo Horizonte

Assistance to the public authority with
assessment of different PPP structures
according to the institutional, financial and
contractual situation of the public owner and
assistance to the structure financing of the
project, the risk allocation matrix and to the
preparation of the procurement.

Financial engineering / green finance



Riyadh Travel Forecast Models

Operation, maintenance and upgrade of Riyadh Strategic Model, upgrading from 1500 zones to 3000 zones, allowing higher sensitivity to the socioeconomic and demographic factors in the City



Comprehensive Corridor Development Plan For Prince Meshal Bin AbdulAziz

- Strategic & transport planning
- Detail design and construction tender



Qatar – Group 8a project North

State of Qatar developed a comprehensive program called "Doha Expressway" to improve the country's road network, particularly in or near its capital - Doha.

Financial engineering / green finance



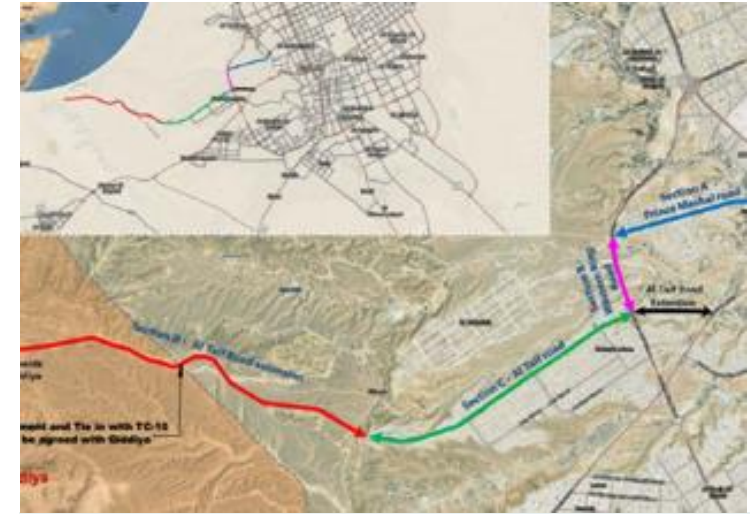
Updating Bahrain Transport Model & Preparation of Strategic Transport Master Plan / Consultancy Services

All major planning agencies in the Kingdom of Bahrain, worked together to achieve updated transport model as 'ONE MODEL' for Kingdom of Bahrain.



Project Management Services - Upgrading of Fifth Industrial Junction in Sharjah

The scope of works included the widening of the existing road, the construction of several interchanges or upgrading the existing ones in order to provide a free flow movement between Emirates road and the roads intersecting it. Total length of the upgraded segment is 12 km.



Comprehensive Corridor Development Plan for Prince Meshal Bin Abdulaziz Road – Al Taef Road (40km)

The scope is to deliver all the design services from Concept design up to Construction drawings including all the surveys, Traffic studies, environmental studies, etc.

Financial engineering / green finance



Pre and Post-Contract Consultancy Services for the Expressway Projects – Group 6 (123km)

The contract covered all consultancy services associated with the design, construction tendering and supervision of the 4 projects of Group 6 including all traffic studies.



Concept Design - NEOM Highway 55 Road Capacity Study From Duba Port to Gayal (95km)

Study of existing conditions and available capacity; Option development for suitable capacity improvement schemes; Design development for option recommendation and selection by Employer; Design interfaces coordination & management with stakeholders management.



Widening & Improvement of Sheikh Khalifa Bin Salman Highway

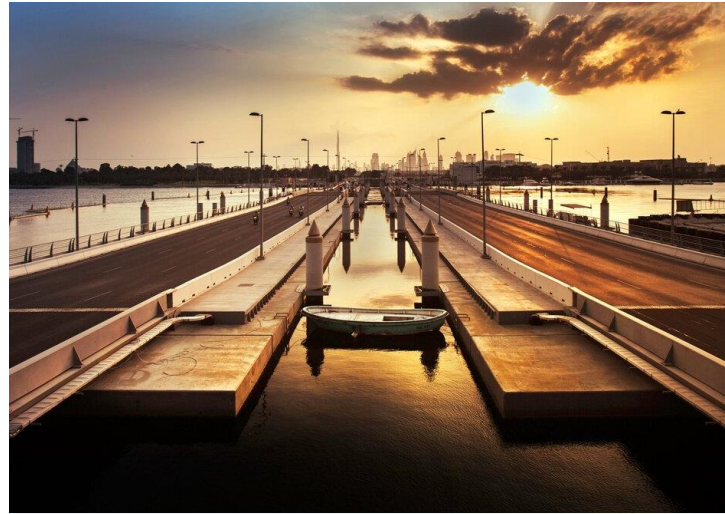
Egis has been awarded a Pre-consultancy services agreement to widen and improve the existing Sheikh Khalifa Bin Salman Highway to cater for the future traffic by the year 2030, generated by the development plans in surrounding areas and the rapid increase in traffic.

Roads, bridges and tunnels O&M



Sheikh Zayed Tunnel, Abu Dhabi

Maintenance of Sheikh Zayed Tunnel in Abu Dhabi, UAE



Floating Bridge, Dubai

Operations and maintenance of the floating Bridge in Dubai, UAE



Al Maqta Bridge

Al Maqta Bridge with a total length of 300m was the first landmark bridge in Abu Dhabi and the first solid connection of Abu Dhabi Island with the mainland. Constructed in 1967, it was the first project of Waagner Biro (Egis Subsidiary) in the region.

Mobility solutions O&M



Manchester Low Emission Zone

Transport for Greater Manchester (TfGM) has entrusted Egis with the operation of the largest low-emission zone project in the UK for the next five years. This project will contribute to improving air quality to promote healthy and sustainable growth.



Smart Parking Management Amsterdam

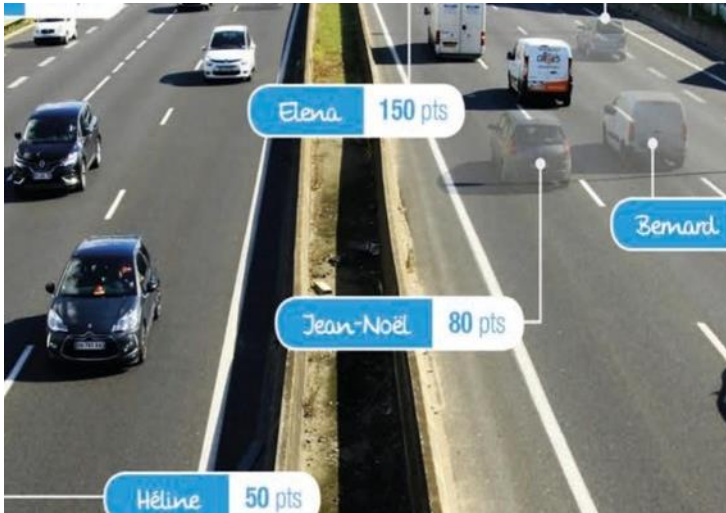
Since 2015, Egis has been responsible for the operation of Amsterdam's 160,000 on-street parking services. Using Automatic Number Plate Recognition (ANPR), Egis monitors more than 6 million vehicles per month reducing fraud and improving vehicle turnover.



Smart City Parking Management, Paris

Working under the Moovia brand, Egis have been fulfilling a 6-year contract to enforce street parking rules and manage administrative appeals in the 8th, 9th, 10th, 17th, 18th and 19th arrondissements of Paris.

Smart solutions



Positive Tolling, Ecological Mobility, Netherlands

Egis deployed this system that rewards road users when they avoid travelling at rush hour. This improves traffic flows and encourages road users to adopt environmentally friendly behaviour.



Smart Traffic, Floating Car Data

Egis was tasked to configure the technical FCD solution implemented by Eurisis and which substantially extends traffic coverage which was previously restricted to counting stations.



National Traffic Control Center, Scotland UK

Transport Scotland have awarded Egis/IBI JV a five-year contract to operate the Traffic Scotland National Control Centre & manage the Scottish Trunk road network that represents over 3500 km of roads including the key inter-city motorways.

Smart solutions



Intelligent Transport Systems, Wallonia

Introduction of an intelligent transport system deployment strategy in Wallonia, Belgium.



Smart and Dynamic Sharing of Bus Lanes

Testing and monitoring a technology for Bus Lanes sharing. When a bus enters the lane, it triggers a light system. This tells other motorists in real time whether the lane is being used by a bus or not.



ATMS for Marseille L2 bypass

Delivery and configuration of an ATMS in Marseille, France.

Smart cities



Al Mutlaa Smart City Feasibility Study, Kuwait

- Define the vision for Al Mutlaa Smart City
- Describe the portfolio of Smart City services & solutions as well as benefits to Al Mutlaa City
- Outline Al Mutlaa City operating model



Bhubaneswar Smart City

The smart city mission is based on four pillars:

- Enabling Local Development
- Improve Quality of Life
- Harnessing Technology
- Drive Economic Growth



Chandigarh Smart City

Egis in India has been appointed for PgMC for Chandigarh Smart city to plan, design, integrate, package, administer and manage the development and construction of Area based developments

Autonomous transport system (ATS)



ATS, Bluewaters Island, Dubai, UAE

Automated Transport System (ATS) - Consultancy Services for Dubai Bluewaters Island Group Rapid Transit (GRT), covering 3km and 2 stations



ATS, Jacksonville, USA

Design study for Autonomous Transport System project of Jacksonville, covering 4m and 8 stations



ATS, Technolac Chambery, France

Study of Autonomous Transport System in Technolac Business Park

Bus rapid transit (BRT)



BHLS, Lyon, France

General study for the development and improvement of the Lyon transport network
- line A7



5 BRT Lines, Monaco

Study relating to the definition of possible systems for Public Transport in Monegasque Own Site (TCSP) and their feasibility conditions.



BHLS, Nantes, France

Feasibility study and preliminary program for the extension of the CETEX Vertonne 2 which can accommodate 120 new electric and CNG vehicles in the long term.

Light rail transit (LRT)



Internal Transit System - King Saud University

Project management for the King Saud University Internal Transit System



Nice LRT, France

EPCM of Nice LRT lines 2, 3 and 4
22.1km, 39 stations



Parramatta LRT, Australia

Parramatta LRT - Technical assistance to owner 12km, 16 stations

Metro



Greater Cairo Metro Line 1

The rehabilitation includes the renewal of the Signaling system, telecommunications equipment, centralized control system, power supply, track repairs, the electrical and mechanical systems and the Civil & Architectural Works related.



Greater Cairo Metro Line 2

Egis acts as Feasibility Study Subconsultant for rehabilitation Cairo Metro Line 2. The line has been in operation since 1996 and there have been several improvements made to the line over the years.



Greater Cairo Metro Line 3

The construction of the Greater Cairo Metro Line 3 (Al Thawra Line) will connect Imbaba in western Cairo with the Cairo Int'l Airport in the east, totaling a length of about 45.5 km and 34 stations.

Metro



Greater Cairo Metro Line 6

The construction of Cairo Metro Line 6 is part of Egypt's plans to increase and improve public transport capacity and passenger experience for citizens. It will be 34 kilometres long and will accommodate around 1.5 million passengers.



Source: Siemens Mobility



Electric Express Train (High Speed Rail) – Green Line

The High-Speed Rail project is designed to connect major cities and regions within Egypt, offering passengers a fast, efficient, and sustainable mode of transportation.



Source: Systra



Alexandria Raml Tram Rehabilitation

Upgrade and extend the Alexandria Raml Tram into a modern reliable and efficient LRT system with an up-to-date infrastructure, Transportation Systems, Rolling Stock and operation and maintenance facilities, including, when possible, pedestrians and residents, etc.

Metro



SAR

Preliminary Design and Tender Documents for GCC Railway, Saudi Arabia, a railway to connect Saudi Arabia with Qatar, UAE and Kuwait.



Neom

Independent Safety Assessor (ISA) for the NEOM Spine Railway and the NEOM Industrial City Connector (NICC) which will comprise several individual lines: high speed rail lines, freight rail lines, Metro/GMT rail lines, depot rail lines and platform loops



Q-EXPRESS

Feasibility Study for Q-Express, connecting Qiddiya with Riyadh City

Metro



Riyadh Metro

Project and construction management for 6 automated lines and 92 stations covering 177km - 60km underground, 36km over ground and 81km of viaduct sections



Doha Metro

Project management for the Doha automatic metro system which comprises of four lines, 76 km of track (of which 55 km is underground and 17 km on viaducts) and 28 stations. It links the airport to the business centre and stadiums.



Bahrain Metro

Technical advisory and consultancy services following the recommendations made in Strategic Transport Master Plan for the Bahrain Metro project, phase 1 which consists of two lines, blue and red and will run for a total of 28.6 km.

Metro



Madinah Metro

Feasibility studies and preliminary design of Madinah metro to facilitate the mobility of the several million pilgrims that visit the holy city of Madinah each year. The plan included 95km of rails divided into three lines: green, blue and red with 25 km of underground and more than 48 km above ground.



Etihad Rail

Project management services for the railway network linking freight facilities and passenger stations, and forming part of the planned Gulf Cooperation Council (GCC) railway network

Metro

Egis, almost 20 years serving the urban transport and railway engineering sector in the Middle East!

ALEXANDRIA LRT PROJECT

EPCM of the renovation of Alexandria LRT for all operating systems and equipment, design responsibilities for most of these systems.

RIYADH METRO

Project management and construction supervision for Riyadh metro

In 2011, the Arriyadh Development Authority (ADA) got government approval to build a 176 km metro with 6 lines and 85 stations.

In 2012, Egis was consultant to the ADA and was heavily involved in the production of the preliminary design.

Since then, Egis has been at the heart of the Project Management and Construction Management of lines 1, 2 and 3.



AMMAN TRANSPORT MASTER PLAN

Transport modelling and feasibility study plan.

GCC RAILWAY

Preliminary and detailed design studies between Kuwaiti border and Ras Al-Khair (145 km).

DAMMAM PUBLIC TRANSPORT SYSTEM

Conception and modelling studies.

BAHRAIN METRO PROJECT

Technical Advisory and Consultancy Services for the Bahrain Metro Project Phase 1. It will consist of 2 lines, blue and red that will run for a total of 28.6 km.

DOHA METRO

Project management and construction for Doha Metro phase 1 including Gold Line, The Major Stations and all Elevated sections.



DUBAI METRO

Expolink 2020: Technical Management and coordination of the EPCM Contractor.



UAE RAILWAY

Program Management Consultant for the implementation of the UAE Railway - Phase 2 and Phase 3.

RIYADH TROLLEYBUS

Full Turnkey services for construction of trolleybus line serving King Saud Bin Abdulaziz University campus.

MADINAH METRO

Feasibility studies and preliminary design for 3 lines of this 95 km project.

MASHAAER METRO

Project Management Office for O&M of Al Mashaaer Al Mughaddassah Metro Line for operation during Hajj and Maintenance activities all year.



JEDDAH METRO

Feasibility study and preliminary design of the Blue and Orange lines. (91 km, 48 stations).

Planning & urban development



Hawana Salalah Masterplan

Hawana Salalah offers a variety of real estate options including villas, townhouses, and apartments, along with a marina, and an abundance of outdoor space.



Jeddah City Projects

Technical review services to several of Jeddah's PMO projects reviewing the infrastructure and engineering component, as well as the urban planning and development component.



Dubai Transit Oriented Development Strategy

A comprehensive TOD strategy for city of Dubai and a focused TOD Manual that provides regulatory guidance and supports Dubai 2040 Vision to promote mixed-use sustainable developments, walkability and vibrancy close to public transit stations.

Planning & urban development



Katara

Project management and technical support services for the cultural complex which consists of several Arabian style buildings, art organizations, museums, and galleries, as well as retail, restaurants and coffee shops.



Green Riyadh

Program management and technical support services for the implementation of the 'Green Riyadh' strategy contributing to increasing the per capita share of green space in the Saudi capital.



AlUla Infrastructure Program

Developing, monitoring and administering the overall Infrastructure Delivery Program, in coordination with the Asset Delivery Program, for the overall AlUla County (22,500 km³) aimed at making AlUla a sustainable, innovative and inclusive



Mobility & Planning Team.

04.

Egis global network – urban and mobility planning



**Technical
Community**



Mobility and planning leadership



Mathieu Cremer
Director Urban Transport &
Urban Development
France



Fanny Guyot
Director Mobility & Upstream
Studies - France



Muhammad Mustafa
Regional Director Mobility &
Planning - UAE



Omar Benzaria
Regional Director BL
Transportation - KSA



Zain Ali
Director Mobility
UAE



Matthias Bauer
Director Urban Planning
UAE



Anthony Simon
Project Director Urban
KSA



Tanios Elkhoury
Regional Director Urban
Development
KSA

Mobility and planning leadership



Mazen Houry
Mobility Planning Lead
KSA



Stelios Pelantakis
Director of Infrastructure & Land
Development
UAE



Olivier Oudin
Project Management &
Business Development - UAE



Ion Besteliu
Technical Director Urban
KSA

Mobility and planning key team



Monica Farmaha
Senior Transport Engineer
UAE



Hasan Hadi
Senior Transport Planner & Modeler
UAE



Rahaf Husein
Senior Transport Planner
UAE



Manju Pundir
Senior Urban Planner
UAE



Joseph Joson
Transport Analyst
UAE



Kishwerniha Buhari
Urban Designer
UAE



Jephin Philip
Urban Planner
UAE



Mughda Godbole
Urban Planner
KSA



Why Egis?

05.

Why egis?



- **Proven track record** of delivery
- Contribution to the development of **> 120 countries**
- **'Glocal' approach** - relevant experience internationally and locally
- **One-stop shop** - mix of expertise under one roof
- Covers the **full lifecycle** of the project
- Experience as **Consultant, Engineer, Project Manager, Operator and Investor**





Egis

Unit 308, 3rd floor, Building A1
Dubai Digital Park
UAE

04 501 5422
communication.middle-east@egis-group.com

www.egis-group.com



Photos © | Egis, Adobestock