



BRAZZAVILLE MAYA MAYA INTERNATIONAL AIRPORT
POINTE-NOIRE AGOSTINHO NETO INTERNATIONAL AIRPORT
OLLOMBO SASSOU N'GUESSO INTERNATIONAL AIRPORT

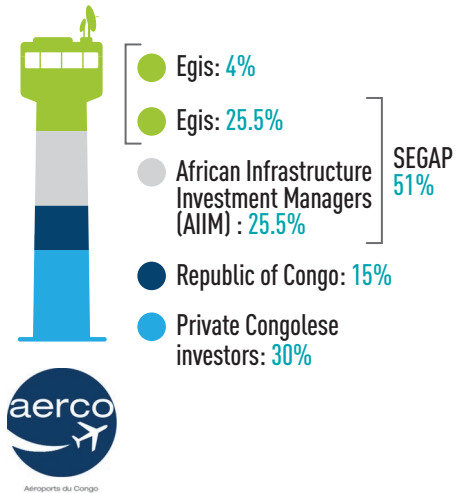
Brazzaville International Airport, which serves the capital, has seen considerable improvements since the start of the concession. A new passenger terminal and a new runway adapted to the Airbus A380, make it a safe and efficient air hub in Central Africa. It welcomed more than 700,000 travellers in 2022, and traffic has recovered to pre-pandemic levels. Brazzaville airport offers many connections across the region and the rest of Africa as well as to the major airport of Paris, Charles de Gaulle.

Pointe-Noire International Airport, located on the country's Atlantic coast, is gateway to the high potential ports of Central Africa. Passenger numbers have passed 500,000 thanks to a major investment plan, including the opening of a new passenger terminal in 2019 and the extension of the apron.

Opened in 2013, the new Ollombo International Airport, located in the central plateaux region, rich in mineral resources, provides access to a Special Economic Zone.



Shareholders:



EGIS KNOW-HOW

Egis supports the operating company AERCO with specialist expertise to develop, operate and manage the three airports. Egis has put in place teams of experienced senior executives who are providing effective management while ensuring the safety and quality of services. The airports managed by AERCO aim to achieve the highest international standards. Investment projects are underway in the short and medium term such as reorganising and modernising freight areas, strengthening utilities networks, extending parking areas and resurfacing the runway. These operations are led by experts based at Egis headquarters, who regularly conduct on-site missions.



Concession period: **25 years**

Start of concession: **2011**



Investment 2011-2016:

33 billion FCFA

50.3 million Euros

Construction of infrastructure such as passenger terminals, aprons, financed by the Republic of Congo



Economic assets Republic of the Congo

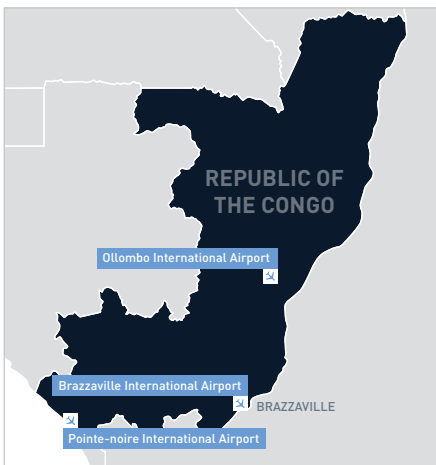
Area: **324,000 km²**

Population: **5,280,000**

- + Petrochemicals
- + Wood
- + Minerals

Republic of the Congo:

- > Gateway to the vast regional market of Central Africa; 200 million inhabitants in 12 countries
- > The Congolese forests, which cover 65% of the country, symbol of its rich biodiversity.
- > Industrial, agricultural and tourism potential.
- > Economic diversification supported by infrastructure development:
 - Port of Pointe Noire, one of the few deep-water ports in Africa
 - Construction of a road and rail network
 - Energy production and distribution projects



PRIORITIES



ACI AFRICA SAFETY AWARD 2019 - BRAZZAVILLE AIRPORT AWARDED
"EXCELLENCE IN SAFETY (UNDER 20,000 MOVEMENTS)"

- ⊙ Bring the airports up to international standards in accordance with ICAO recommendations
 - ⊙ Become a benchmark in Central Africa in terms of passenger experience
 - ⊙ Develop regional and international connectivity and optimise the commercial and service offering
- ⊙ **Infrastructure and Investments**
 - > New passenger terminal buildings:
 - Brazzaville (44,623 m², 7 boarding bridges),
 - Pointe-Noire (18,552 m², 6 boarding bridges)
 - Ollombo (15,730 m², 2 boarding bridges)
 - > New 3,300 m runway in Brazzaville able to accommodate all sizes of aircraft (code F)
 - > Pointe-Noire 2,600 m runway and Ollombo 3,300 m runway
 - > Major investment plan in Brazzaville and Pointe-Noire:
 - Construction of new perimeter fences and guardhouses compliant with ICAO standards
 - Refurbishment and reorganization of the cargo areas to satisfy international standards and industry practices
 - Upgrade of water, energy and road networks
 - Implementation of waste management facilities
 - > Construction of a new fuel hydrant system in Brazzaville
 - > Extension of apron to increase aircraft parking capacity and resurfacing of the runway in Pointe-Noire
- ⊙ **Further development**
 - > New regional and international routes for commercial flights
 - > International express freight
 - > Non-aeronautical activities
 - ⊙ **Raising operational standards**
 - > Airport Security Program
 - > Wildlife Management Plan implemented
 - > ASQ Survey (Airport Service Quality), an ACI initiative to improve quality and passenger experience
 - > Implementation of a safety management system (SMS)
 - > Development of training programmes to upgrade skills and transfer know-how to airport team

KEY FIGURES

	2019	2020 <i>Covid impact</i>	2021	2022
PASSENGERS	1,108,391 including 618,397 domestic traffic	569,036 including 370,248 domestic traffic	951,545 including 621,760 domestic traffic	1,156,790 including 726,770 domestic traffic
MOVEMENTS	23,247 including 10,366 domestic traffic	15,009 including 6,160 domestic traffic	19,336 including 12,333 domestic traffic	20,930 including 13,137 domestic traffic
CARGO (tonnes)	10,811 including 580 domestic traffic	8,165 including 372 domestic traffic	11,011 including 858 domestic traffic	12,800 including 1,340 domestic traffic

IMAGINE. CREATE. ACHIEVE.
the airports of tomorrow

www.egis-group.com

Follow Egis on:

Egis
15, avenue du Centre - CS 20538 - Guyancourt
78286 Saint-Quentin-en-Yvelines Cedex - France
Tel.: +33 1 39 41 40 00
E-mail: contact.egis-airport-operation@egis-group.com