



Egis In the Middle East 2024

IMAGINE
CREATE
ACHIEVE
a sustainable future

Our purpose

Improving people's quality of life and supporting communities

in their social and economic development, whilst drastically reducing carbon emissions and achieving vital 2050 net zero targets.



About Egis



01.

About Egis

IMAGINE
CREATE
ACHIEVE

a sustainable future

Egis is an international player active in the consulting, construction engineering and mobility service sectors.

We design and operate intelligent infrastructure and buildings capable of responding to the climate emergency and helping to achieve more balanced, sustainable and resilient territorial development.

With operations in 100 countries, Egis places the expertise of its 19,500 employees at the disposal of its clients and develops cutting-edge innovation accessible to all projects. Through its wide-ranging fields of activity, Egis is a central player in the collective organisation of society and the living environment of citizens all over the world.

Key figures

TURNOVER BREAKDOWN 2023

\$ 2bn



81%
Consulting & engineering



19%
Operation & mobility services



RAIL
29%



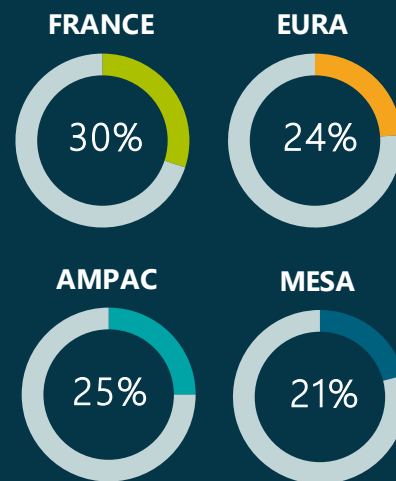
ROAD
27%



BUILDING
25%



ENERGY, WATER & OTHERS
19%



EURA: Europe . Africa
AMPAC: Americas . Pacific
MESA: Middle East . South Asia

28

ROAD OPERATING
COMPANIES

20

AIRPORTS

21

URBAN PARKING
CONTRACTS IN
EUROPE

ENR 20th

Engineering News Record
global ranking*

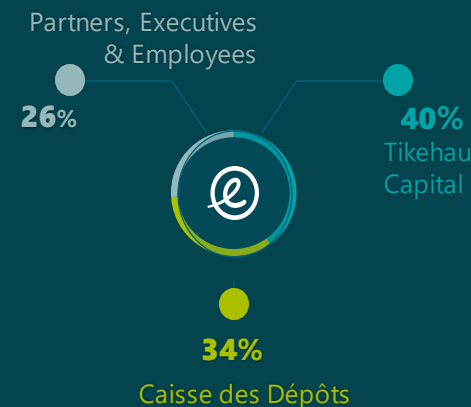
1st

FRENCH ENGINEERING
COMPANY

11th

IN TRANSPORTATION
MARKET*

*ENR TOP 225 ranking 2023



19,500
EMPLOYEES
IN THE WORLD

75% Consulting & engineering

25% Operation & mobility services

Our 10 strategic priorities to 2026

1

Contributing to global **carbon neutrality** by 2050

2

Become a **leading industry figure**

3

Accelerate in Egis' most **successful markets and zones**

4

Impose the **transition to a low-carbon future** as the Group's third pillar

5

Place **intelligence** at the heart of cities and mobility

6

Stay **close to our clients**

7

Step up our **development in Southeast Asia**

8

Link up the **chain of expertise**

9

Enhance **technical and digital excellence**

10

Help our employees grow, and continue to attract **new talent**

Climate emergency, our absolute priority



OUR 5 COMMITMENTS to take concrete action for the environment on a daily basis

- Reduce our greenhouse gas emissions
- Reduce emissions from our clients' projects
- Strengthen carbon sequestration
- Evolve our business portfolio in line with the Paris Agreement
- Strengthen the resilience of territories and infrastructures



○ **A wide range of engineering services and operational solutions**

to fight against climate change and biodiversity erosion

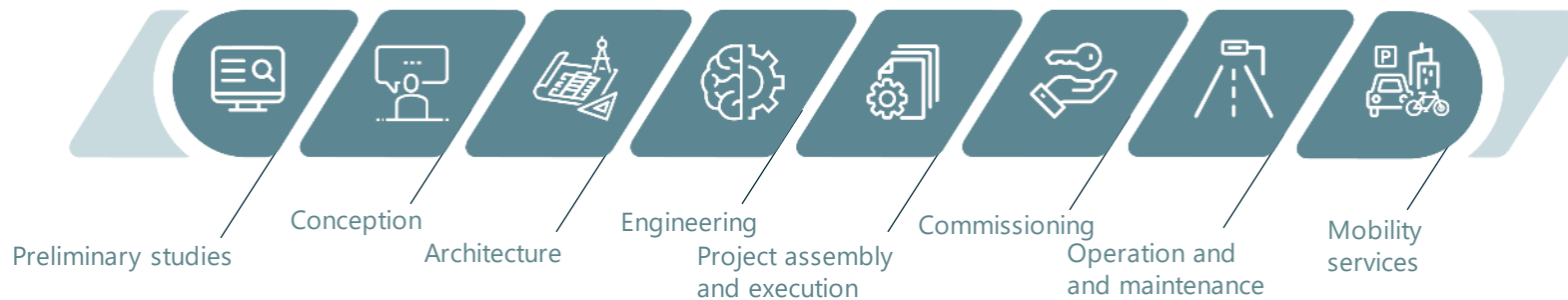
○ **The use of low-carbon alternatives with equivalent timeframes and costs**

on operations and projects entrusted to us

Our global offer



Throughout the project value chain



Our global offer in details



Mobility



Urban transport

- Metro
- Tram
- Bus
- Cable cars

Intercity and long-distance transportation

- Railways
- Roads
- Aviation
- Maritime and river

Structures

- Tunnels
- Bridges and viaducts



Urban and Sustainable living



Buildings

- Shops and offices
- Health
- Sports and events
- Education, culture and administration
- Housing

Water and environment

- Storage, transportation and water treatment
- Protection of biodiversity
- Natural resources
- Air, odours, health
- Littoral



Energy and Industry



Low carbon energy

- Renewable energy
- Nuclear

Industrial facilities

- Automotive
- Aeronautics
- Agrifood
- Pharmaceuticals and chemicals
- Data center
- Logistics

A local international player

NORTH AMERICA

2 countries
1,000 employees

LATIN AMERICA

5 countries
2,000 employees

EUROPE

35 countries
7,500 employees

INDIA

2,500 employees

ASIA

17 countries
900 employees

AUSTRALIA NEW ZEALAND

2 countries
700 employees

AFRICA

11 countries
400 employees

MIDDLE EAST

9 countries
3,000 employees



Egis in the Middle East

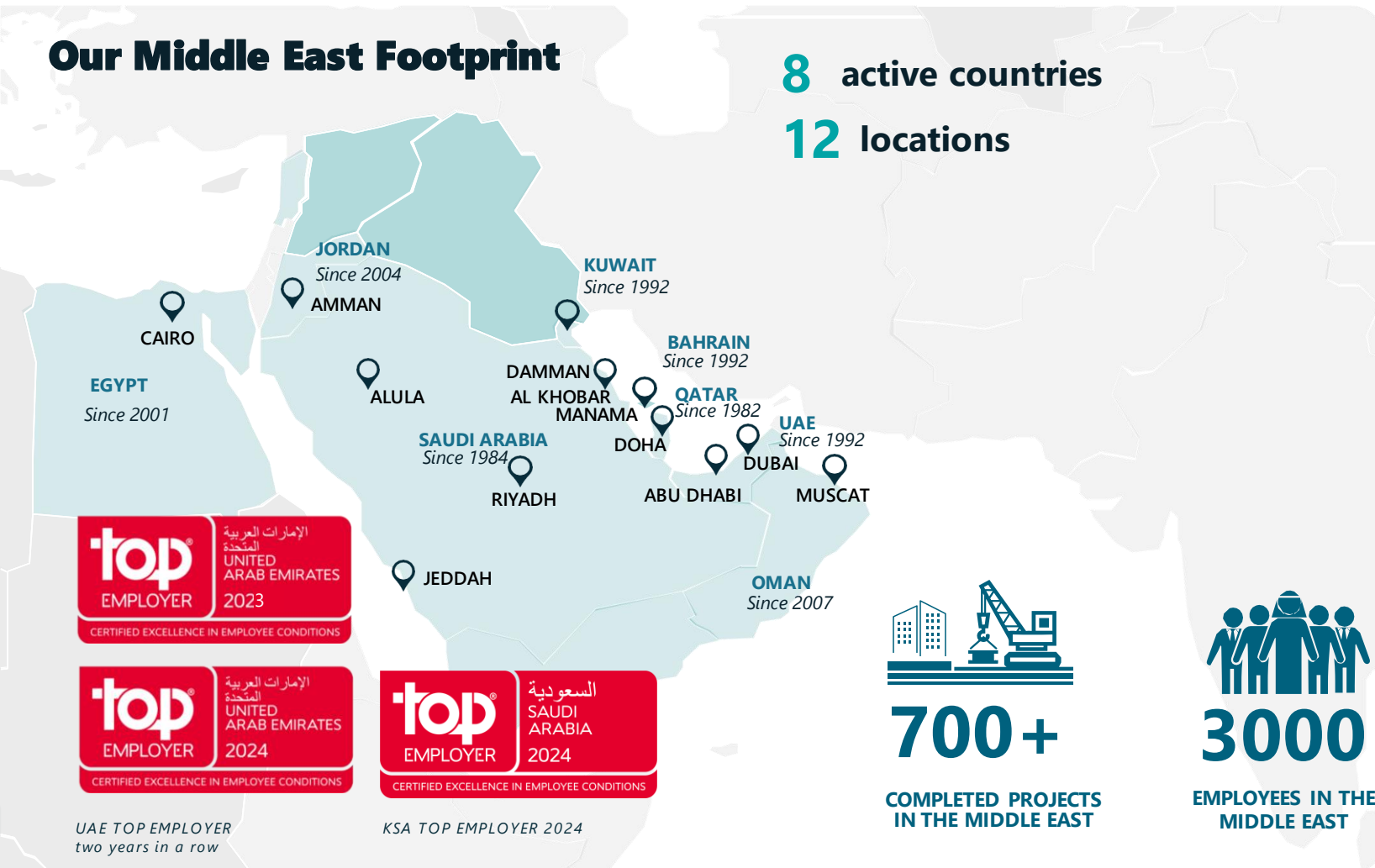


02.

Egis in the Middle East

Our Middle East Footprint

8 active countries
12 locations



700+

COMPLETED PROJECTS
IN THE MIDDLE EAST



3000+

EMPLOYEES IN THE
MIDDLE EAST

INTERNATIONAL SUBSIDIARIES

Voltere
by @egis

Inhabit

ARCHITECTS

IO

WW+P

MIDDLE EAST SUBSIDIARIES

UA
@egis

Omrania عمران
@egis GROUP

waagner biro
bridge services
@egis GROUP

PROJACS ACADEMY
by @egis



Partnerships and Awards

Our partnerships



Egis is a Member/Industry Partner of the Emirates Green Building Council.



EmiratesGBC
مجلس الإمارات للأبنية الخضراء
Emirates Green Building Council

The Emirates Green Building Council (EmiratesGBC) is an independent forum, formed in 2006 with the goal of advancing green building principles for protecting the environment and ensuring sustainability in the United Arab Emirates. The formation of EmiratesGBC was considered a milestone and a breakthrough towards creating and maintaining a sustainable built-environment and protecting the ecosystem in the UAE, which has become a model for the region to follow.



We are pleased to join forces with EmiratesGBC during the “Year of Sustainability” in the UAE and to support the transition towards more sustainable building practices in the country. At Egis, sustainability is the core part of our business strategy, and we believe that this partnership will enable us to make a real impact in the region. We will also closely collaborate with EmiratesGBC towards effective and fruitful participation in UNFCCC’s COP28 in Dubai. COP28 is especially significant because it comes at a critical time when the world is facing an unprecedented climate emergency. As such, we will have to ensure, bold actions are taken and effective decisions are made, to address the urgent climate crisis.



Alaa AbuSiam

CEO of Egis in the Middle East & South Asia

Our awards



Multi-Discipline Consulting Company of the Year – Middle East

- In December, Egis won the Multi-Discipline Consulting Company of the Year award in the **2022 Middle East Consultant Awards**.



Highly Commended Consultancy of the Year

- Egis was highly commended at the **Construction Week KSA Awards** in 2023.



Sustainable Project of the Year

- Seaboost & Egis won multiple awards for the 'Sustainable Project of the Year' award for making an important contribution to its surroundings.



Architect of the Year

- U+A by Egis Group has won the Architecture Company of the Year award recognising the continuous pursuit of excellence in delivering top-tier architectural projects in the MENA region.



Municipality Award for Architectural & Urban Creativity

- Omrania, an Egis subsidiary, has won the Municipality Award for Architectural and Urban Creativity, organized by **Riyadh Region Municipality**, for their work on the iconic Public Investment Fund (PIF) building.

Our awards



Best Innovation in Construction Award

- Our team at Egis was honored for their groundbreaking work on the ongoing Al Hamra Entertainment Complex in Riyadh. This project showcases remarkable achievements in innovation and BIM implementation.



Construction Executive of the Year

- Bob Hope receives the Construction Executive of the Year Award at the Construction Innovation Awards KSA 2024



Omrania by Egis Group: CEO of the Year

- Charles Trad, P.Eng., Omrania, has been honored with the CEO of the Year award at Design Middle East KSA Awards 2024!



Master Plan of the Year

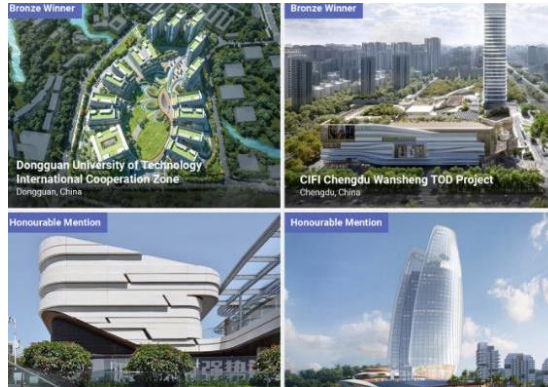
- U+A by Egis Group have won the "Master Plan of the Year" award at the Design Middle East KSA Awards for our outstanding project, Amaala.

Our awards



Mechanical Project of the Year & Innovation Project of the Year

- Egis won multiple awards for the **UAE Pavilion project** at the Construction Business News Middle East MEP Awards 2023.



International Design Award

- 4 projects by 10Design in China and Vietnam distinguished for their exceptional vision and design excellence.



Hospitality Project of the Year

- U+A by Egis Group's work on Six Senses, Amaala Triple Bay has won the 'Hospitality Project of the Year' in multiple awards, underlining our dedication to innovation and construction best practices.



Green Building Award 2023

- 11 of our projects were distinguished by this award, which honours projects and companies in the building sector that stand out for their performance and contribution to a sustainable built environment.



Project Reference

02.

Energy & Sustainable Cities



Environment, Water & Energy, Nuclear



Façade & Sustainability



Architecture



Building Engineering

Environment

Rehabilitation of Three Dumpsites

KUWAIT



The rehabilitation of three dumpsites, following a detailed site assessment, data collection and environmental impact assessment.

Environmental Conservation Measures for the Spine in NEOM



Assessment of environmental conservation measures including ecology assessments, trees and shrubs survey, spiny-tailed lizard survey, heritage and archaeology assessment, and baseline dust and noise monitoring reports.

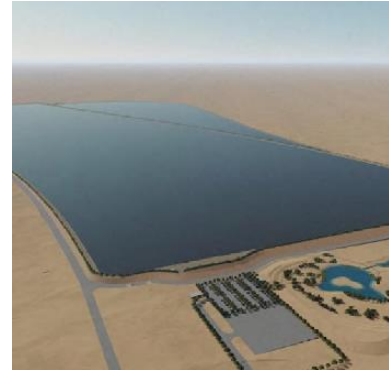
Kitchener Drain Depollution Solid



Project implementation support and construction supervision for the depollution of the drain and its catchment area, improving the health and environmental conditions in three governorates.

Treated Sewage Effluent (TSE) Lagoon

QATAR



Development of the detailed design of hydraulics, earthworks, infrastructure, and buildings, along with the Environment Management Plan and the Environmental Impact Assessment to create facilities capable of storing 130,000m³ of recycled water per day in winter, with a storage capacity of over 20 million m³.

Coral Reef Restoration in the Arabian Gulf

QATAR



Deployment of a new generation of artificial reefs that are developed to enhance coral larvae settlement and survival. Deployed close to healthy coral reefs, these artificial reefs are passively colonized by local coral species and develop into thriving coral reef units.

Rehabilitation of Al Karaana Lagoon

QATAR



Design and works supervision to rehabilitate the lagoon in five major phases: ecological survey, design, clean-up, and disposal of all sources of pollution, rehabilitation of the nature.

Water, Energy & Nuclear



Sharjah's Waste to Energy Plant

UNITED ARAB EMIRATES



Design review for the development of a waste to energy facility in the Emirate of Sharjah that will use up to 37.5 tons of unrecyclable solid waste an hour to generate 30MW of electricity, supplying electricity to 28,000 households and diverting over 300,000 tons of waste from the landfills.

Baraka Seawater Desalination Plant

OMAN



Design, review and construction supervision as the Owner's Engineer for the development of the largest plant in Baraka to cater for the increasing water demand in Oman.

Al Shuqaiq-3 IWP Desalination Plant

SAUDI ARABIA



Site supervision and contract management services for the Al Shuqaiq-3 IWP Desalination plant. The plant will use reverse osmosis (RO) membrane technology with the capacity to produce 450,000m³ of fresh water daily.

Oman Water Sector Restructuring

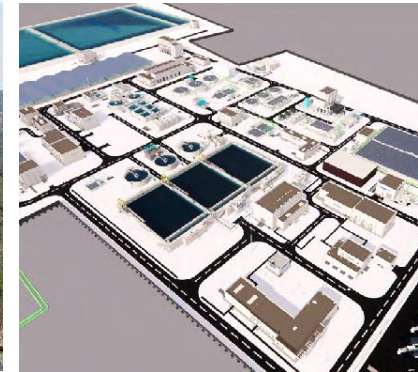
OMAN



Concept and detailed design based on optimal structure for planning and operational delivery of water and wastewater infrastructure services in Oman, as well as its implementation to improve the performance of the country's existing water and wastewater services.

Qatar Integrated Industrial Wastewater Treatment Works (IIWWTW)

QATAR



Design, build, operate and maintain phase 1 of IIWWTW, which will provide treatment for up to 10,000m³/d of tankard industrial wastewaters arising from light industries generated within the Doha industrial catchment area.

Façade & Sustainability



Palestine Museum

PALESTINE



Project management throughout the design, tendering, construction, and LEED rating process of Palestine's first green building following the LEED rating system. Energy - saving measures will help the museum save 15% of its annual energy consumption and 48% of its water consumption.



Muscat International Airport

OMAN



Façade, access and BMU consultancy services including reworking of the façade systems design, with construction support, technical reviews and site inspections for the new international airport terminal. The building is a significant piece of infrastructure for the area, accommodating up to 40 flights an hour.

National Bank of Kuwait Tower

KUWAIT



Project management and LEED Certification administration of National Bank of Kuwait's headquarters. The iconic tower is 300m high, spread over 60 floors and is LEED Gold certified for the sustainability, design and eco-friendly nature of the building.

UAE Pavilion Expo 2020 Dubai

UNITED ARAB EMIRATES



Façade, building maintenance consultancy, AV/IT engineering support and sustainable design for the UAE Pavilion, a major attraction at Dubai's Expo 2020. The pavilion's moveable roof structure consists of a hybrid system between a shell and a portal frame composed of 28 wings.

Swiss International School in Dubai

UNITED ARAB EMIRATES



Full range of engineering services, including structural, building, fire, infrastructure, and traffic engineering, as well as sustainability consultancy and the main consultant to design and supervise the construction of the new wing. The primary and secondary school buildings were the first in the region to be low-energy certified by the MINERGIE Association, Switzerland.

Terra – The Sustainability Pavilion

UNITED ARAB EMIRATES



Structural design and engineering of all cable façade systems, including the IGU glass and custom patch fittings of one of the top three attractions of Expo2020. The sustainability drivers for the pavilion were net zero energy and water.

Architecture



Park Heights I

UNITED ARAB EMIRATES



A prime residential tower comprised of a total of 270 one-, two- and three-bedroom apartments, supported by community retail, a multi-purpose room, a fully equipped gymnasium, and an outdoor infinity edge pool.

Dubai 2020 Rail Link

UNITED ARAB EMIRATES



The Dubai 2020 Rail Link is a 15km metro linking to the Expo 2020 site. Dubai Expo 2020 was one of the most important private sector events in the recent history of the United Arab Emirates.

Bluewaters Residences

UNITED ARAB EMIRATES



Architecture, master planning, sustainability and CGI for the residences, which comprise 10 elegant mid-rise buildings, providing 698 apartments, 4 penthouses, and 17 townhouses. The development offers a premium lifestyle with residential amenities.

Al Seef

UNITED ARAB EMIRATES



Architecture, master planning, and CGI of the contemporary area, which has enhanced 670m of the Dubai Creek waterfront with boutique food and beverage establishments, retail, hospitality, and marina amenities over a total GFA of 85,000sqm.

Amaala Eco Hotel

SAUDI ARABIA



The eco-luxury architecture and interiors will be in line with Amaala's sustainable development approach. The resort will include a large variety of facilities such as lush green gardens, a stunning leisure deck, an extensive kids club as well as an exceptional multipurpose venue for events and performances.

Green Planet

UNITED ARAB EMIRATES



Unlike any other building in Dubai, The Green Plant recreates the enchanting world of a tropical forest with over 3,000 plants and animals and the world's largest indoor man-made and life-sustaining tree.

Building Engineering

Yas Arena
UNITED ARAB EMIRATES



Peer review for a large multi-purpose arena project. The arena provides a year-round event space for sports and entertainment.

SRG Residential Tower
UNITED ARAB EMIRATES



Structural engineering, building services and AV/IT for this unique tower that required the MEP engineering to be actively involved in analysis techniques that would not normally exist in other projects.

Jeddah Pearl Hotel and Serviced Apartments
SAUDI ARABIA



Full engineering services for the 5-star hotel tower comprising of a 24-storey hotel building and a 17-storey residential building. The high-end façade is key to the client's vision, therefore integration of the MEP systems into the façade is fundamental within the design.

Nakheel Mall & Palm Tower
UNITED ARAB EMIRATES



Building services, fire and structural engineering, sustainability, AV/IT consultancy and roads and infrastructure as the lead engineer. Palm Tower comprises 300 hotel rooms and 200 serviced apartments.

Amaala Luxury Resort
SAUDI ARABIA



Amaala is a transformational project which incorporates a seven-star luxury hospitality experience on the Red Sea and is set to become a flagship of contemporary KSA, an aspiration strategy which is in line with the Saudi Vision 2030. Essentially, the project consists of three luxurious new resort destinations: Triple Bay, The Island and Miraya.

Opera Grand Tower
UNITED ARAB EMIRATES



Building and structural services, fire, acoustic and vertical transport engineers for the 64-storey residential project for the Opera District cultural hub in the Downtown area of Dubai.



Transportation



Urban Transport & Infrastructure



Intercity Transport



Structures

Urban Transport



Doha Metro QATAR



Project management for the Doha automatic metro system, which comprises of four lines, 76 km of track (of which 55 km is underground and 17 km on viaducts) and 28 stations. It links the airport to the business center and stadiums.

Madinah Metro SAUDI ARABIA



Feasibility studies and preliminary design of Madinah metro to facilitate the mobility of the several million pilgrims that visit the holy city of Madinah each year. The plan included 95km of rails divided into three lines: green, blue and red with 25 km of underground and more than 48 km above ground.

Riyadh Metro SAUDI ARABIA



Project and construction management for 6 automated lines and 92 stations covering 177km - 60km underground, 36km over ground and 81km of viaduct sections.

Alexandria Raml Tram EGYPT



Consultancy services for engineering, procurement, and construction management to rehabilitate the Alexandria Raml Tram by upgrading and enhancing the tramline into a modern and efficient one with up-to-date infrastructure, systems and rolling stock, while improving the associated urban environment.

Greater Cairo Metro, Line 3, Phase 3 EGYPT



Project Management Consultancy Services for Line 3 which will connect Imbaba in the west of the city with Cairo International Airport in the east, with total length of 45.5 km and 34 stations.

Bahrain Metro BAHRAIN



Technical advisory and consultancy services following the recommendations made in Strategic Transport Master Plan for the Bahrain Metro project, phase 1 which consists of two lines, blue and red and will run for a total of 28.6 km.

Urban Infrastructure



Hawana Salalah Masterplan

OMAN



Hawana Salalah offers a variety of real estate options including villas, townhouses, and apartments, along with a marina, and an abundance of outdoor space. The destination also features a series of hotels, restaurants, nightlife options, an aqua hut with beach courts, water sports and many other leisure activities for all visitors to enjoy.



Travel Forecast Models, Riyadh

SAUDI ARABIA



Consultancy services for the development and maintenance of the upgraded travel forecast model for Riyadh. This includes maintaining the existing transport model and developing the updated version by upgrading from 1,500 zones to 3,000 zones, taking into consideration the socio-economic and demographic factors in the city.

Katara

QATAR



Project management and technical support services for the cultural complex which consists of several Arabian style buildings, art organizations, museums, and galleries, as well as retail, restaurants and coffee shops.

Jeddah City Projects

SAUDI ARABIA



Technical review services to several of Jeddah's PMO projects reviewing the infrastructure and engineering component, as well as the urban planning and development component.

AIUla Infrastructure Program

SAUDI ARABIA



Developing, monitoring and administrating the overall Infrastructure Delivery Program, in coordination with the Asset Delivery Program, for the overall AIUla County (22,500 km³) aimed at making AIUla a sustainable, innovative and inclusive development designed to benefit the local population and visitors from around the world.

Green Riyadh

SAUDI ARABIA



Program management and technical support services for the implementation of the 'Green Riyadh' strategy contributing to increasing the per capita share of green space in the Saudi capital.

Intercity Transport



NEOM Highway 55

SAUDI ARABIA



Concept design from Duba Port to Gayal (95km) including the study of existing conditions, design development for recommended options and design interfaces management. In addition to the design of interchanges 1, 2, and 3 on NEOM's Highway 55.

Sheikh Khalifa Bin Salman Highway

BAHRAIN



Pre-consultancy services to upgrade and improve the existing Sheikh Khalifa Bin Salman Highway, by widening it to 5 lanes

Al Ghouse Road

KUWAIT



Supervision services for the construction, rehabilitation, and maintenance of one of Kuwait's major collector roads, including the rehabilitation and widening of 11 km of road, the construction of 9 intersections (3 elevated) and 3 footbridges, the creation of road services, and relocation of all existing utilities.

Fifth Industrial Junction in Sharjah

UNITED ARAB EMIRATES



Project Management of the 12km junction which included the widening of the existing road, the construction of several interchanges or upgrading the existing ones to provide free flow movement.

Etihad Rail

UNITED ARAB EMIRATES



Project Management Consultancy for the 1,200km railway network linking freight facilities and passenger stations, and forming a part of the planned Gulf Cooperation Council (GCC) railway network.

Structures



Qatar Expressway QATAR



Pre- and post- contract consultancy services for the Qatar Expressway Projects to improve the country's road network. The project will construct 9 multi-level interchanges comprising of 2 bridges, 7 underpasses, 1 tunnel and 1 flyover that will provide efficient connectivity between Al Rayyan Road and other widely used roads.



Za'abel Bridge UNITED ARAB EMIRATES



The design and built of the cable-stay bridge which consists of a long main support suspended from a tower with inclined hangers. The towers can be designed in numerous ways and the cables can be fixed in a fan-shaped or harp-shaped arrangements. As with suspension bridges, guarding against wind-based vibration is extremely important.

Maqta Bridge UNITED ARAB EMIRATES



Design and built of the iconic Al Maqta Bridge with a total length of approximately 300m. This bridge was the first landmark bridge in Abu Dhabi and the first solid connection of Abu Dhabi Island with the mainland constructed in 1967.

Yas Marina Hotel Access Bridge UNITED ARAB EMIRATES



Design and built of the only land connection to the Marina Hotel, which is surrounded by the Formula 1 racetrack. This special bridge consists of two reinforced earth walls, a steel Warren Truss Bridge and a streamlined composite panel cladding with lighting and two

Abu Dhabi National Exhibition Centre Bridge UNITED ARAB EMIRATES



Fabrication of the ADNEC Bridge from 600 tons of steel and 132 glazed panels. It is 162 m long and spans all eight lanes of the Khaleej Al Arabi Coast Road adjacent to ADNEC.

Abu Dhabi Ports Company UNITED ARAB EMIRATES



A framework contract for engineering services including Master planning, construction management, port operations, value engineering, cost estimating, quantity surveying and architecture services.



Consulting & Operations



Aviation Advisory &



Engineering

Operations & Maintenance



AlUla Heritage Valley

SAUDI ARABIA



Programming development of the new visitor attraction including the intended audience and visitation aspirations, rationale underpinning the proposed hospitality development program and supporting materials and data to populate the RCU's business plan assumptions.

Ecolodge Project

SAUDI ARABIA



Market and Feasibility Study for a waterfront, ecolodge project located on the Red Sea coast.

Q Express

SAUDI ARABIA



Financial feasibility assessment and recommendation on optimal staffing for a rail line Saudi's capital Riyadh, to Qiddiya.

National Museum of Egyptian Civilization

EGYPT



Marketing strategy and business plan for the museum which will display a collection of 50,000 artefacts, presenting Egyptian civilization from prehistoric times to the present day.

Abu Dhabi Louvre Museum

UNITED ARAB EMIRATES



Market study and attendance forecast for both UAE residents and tourists to assist in the positioning on the museum.

Aviation



Bahrain International Airport

BAHRAIN



Master plan for the concept, preliminary and detailed design for airside and landside, including buildings, tender management, and construction supervision for the Cargo Express Village.

Jeddah Airport

SAUDI ARABIA



Review and preparation of standard operating procedures (SOPs) and operations manuals for the new terminal, program oversight, ATC systems integration, ANS Consultancy & Transition and Design Services (Structure & MEP).

Riyadh Airport

SAUDI ARABIA



Project management services for the development and expansion of Saudi Arabia's second largest airport.

Sharjah International Airport

UNITED ARAB EMIRATES



Project & Construction Management of Sharjah International Airport which included a new departure area, expansion of the passenger check-arrivals area and food court. Externally the airports three aerobridges were replaced and another three added and additional parking was added.

UAE General Civil Aviation Authority (GCAA)

UNITED ARAB EMIRATES



UAE Airspace restructuring which included Program Management, quality, safety & data management, airspace planning & design, verification, validation & publication, ATC migration, transition & contingency planning and training & implementation.

MATARAT

SAUDI ARABIA



Consulting services, establishing phased project management portals, updating airport project management policies and procedures, and providing technical support for planning, designing, and following up the implementation of capital projects with MATARAT subsidiaries for 26 airports in Saudi Arabia.

Operations & Maintenance



Floating Bridge

UNITED ARAB EMIRATES



Design, build, operation & maintenance of Dubai's floating pontoon bridge with the width of 2 x 22m and a total length of 365m, **moving 6,000 vehicles per hour at peak capacity** across both directions.

Al Maktoum Bridge

UNITED ARAB EMIRATES



Operation and Maintenance of Al Maktoum Bridge Lift Span and its services, the works include but not limited to inspection and monitoring of all aspects required for a smooth and undisturbed performance of the Lift Span.

Road Structures in Dubai

UNITED ARAB EMIRATES



Since 1995: Routine, preventive and corrective maintenance of multiple road and bridge structures across Dubai.

Marine and Coastal Engineering Structures

UNITED ARAB EMIRATES



Maintenance of marine and coastal structures including beach improvement and protection solutions, beach stabilization and nourishment, maintenance of water transport stations, and maintenance of marina and berthing facilities across the UAE.

Operations & Maintenance of Package Treatment Plants

QATAR



Management, operation, and maintenance of all Package Treatment Plant (PTP) facilities including O&M activities on any equipment, systems or units installed. This includes planned, preventive and reactive maintenance, overhauling and repair, refurbishment or enhancement of the site.

Pedestrian Bridges and Tunnels in Abu Dhabi

UNITED ARAB EMIRATES



Routine and corrective maintenance and rehabilitation of several pedestrian tunnels and bridges around Abu Dhabi, including but not limited to the renovation and upgrade of the painting works, surface repair, joints sealant, tile works, handrails, channel grating.



www.egis-group.com

