



Kipi-Ipsala Bridge
Greece-Turkey

Kenitra-Marrakech high-speed line

Morocco



ON-Corridor GO Expansion programme

Canada - Toronto-Hamilton



AIUla
Saudi Arabia

Sanofi's EVF biopharmaceutical plant

France - Neuville-sur-Saône



Sizewell C nuclear island
United Kingdom - Suffolk



IMAGINE. CREATE. ACHIEVE.
a sustainable future

www.egis-group.com



EGIS HEADQUARTERS

15 avenue du Centre CS20538-Guyancourt
78286 Saint-Quentin-en-Yvelines Cedex France

Design and production:

Direction de la Communication et des Affaires publiques
Gilles L'hospitalier

Published in July 2023

Photos: ©DR, © Egis, © Egis - Germain Van Rossum,
© AdobeStock / brizardh / Anjelika Gretskaia.



At a glance
2023

Egis group

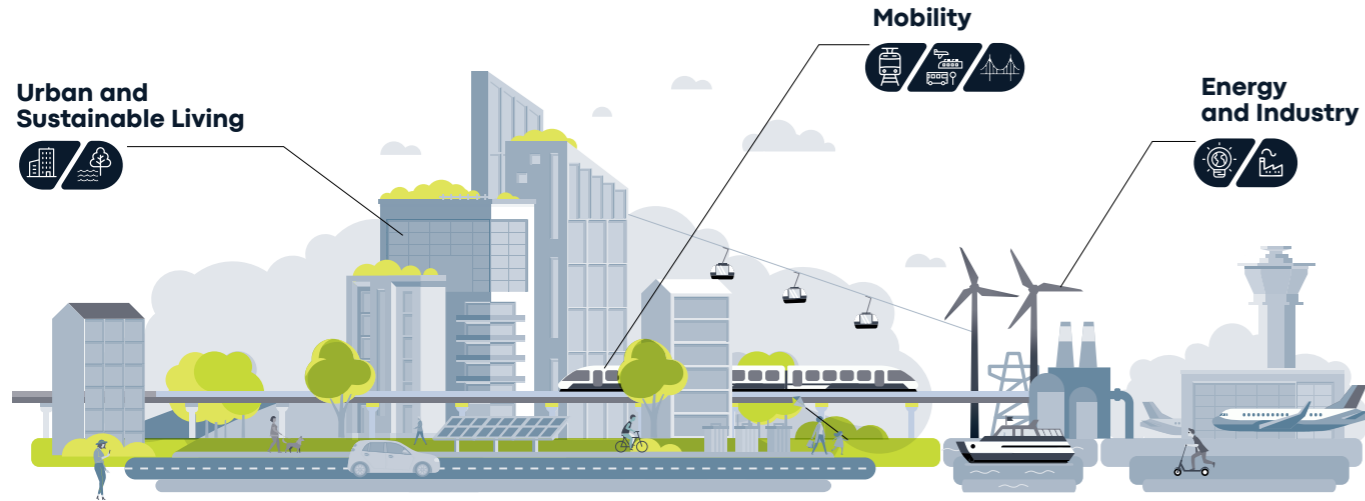
Egis is an international player active in the consulting, construction engineering and mobility service sectors.

We design and operate intelligent infrastructure and buildings capable of responding to the climate emergency and helping to achieve more balanced, sustainable and resilient territorial development.

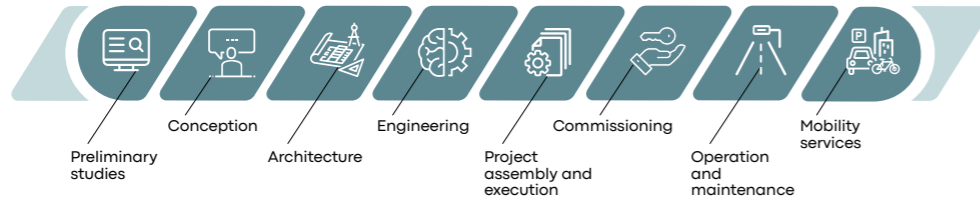
With operations in 120 countries, Egis places the expertise of its 18,000 employees at the disposal of its clients and develops cutting-edge innovation accessible to all projects.

Improving people's quality of life and supporting communities in their social and economic development, whilst drastically reducing carbon emissions and achieving vital 2050 net zero targets, that's our purpose.

Our global offering



Throughout the project value chain



Mobility

- Urban transport
 - Metro
 - Tram
 - Bus
 - Cable transport
- Structures
 - Tunnels
 - Bridges and viaducts
- Intercity and long distance transportation
 - Railways
 - Roads
 - Aviation
 - Maritime and river

Urban and sustainable living

- Buildings
 - Shops and offices
 - Health
 - Sports and events
 - Education, culture and administration
 - Housing
- Water and environment
 - Storage, transportation and water treatment
 - Protection of biodiversity
 - Natural resources
 - Air, odours, health
 - Littoral

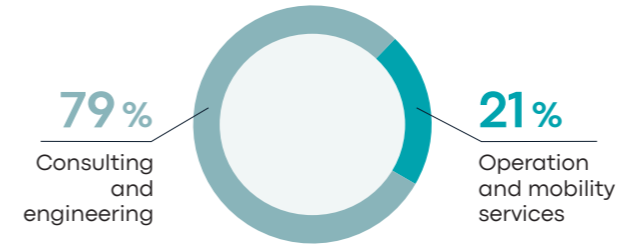
Energy and industry

- Low carbon energy
 - Renewable energy
 - Nuclear
- Industrial facilities
 - Automotive
 - Aeronautics
 - Agrifood
 - Pharmaceuticals and chemicals
 - Data center
 - Logistics

Key figures

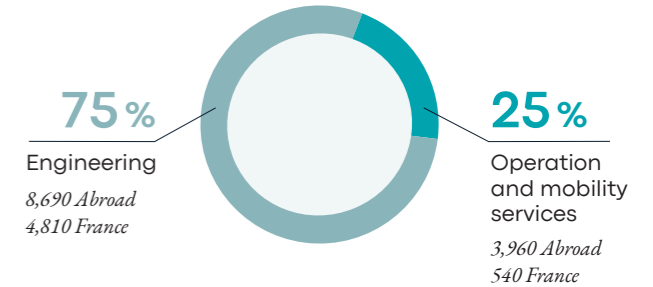
2022 turnover

€1.48 Bn



Our employees

18,000
Employees worldwide



Shareholders

40%

Tikehau Capital
via its T2 Energy
Transition fund

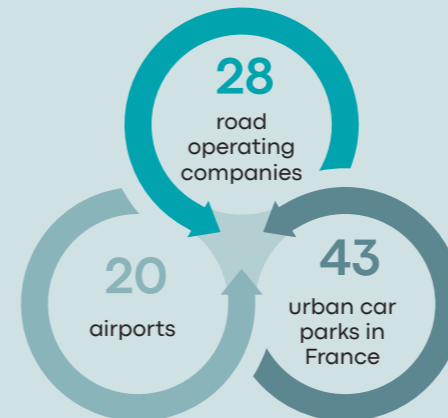
34%

Caisse
des dépôts

26%

Executive
partners and
employees

Infrastructure operation



Performance

#1

French
engineering firm

#8

on the transport
market

#21

in the global
Engineering
News Record
company
listings

Our values

- People-first**
Develop the careers and skills of its employees
- Responsible**
Build consideration for sustainability and ethics into projects and our dealings with our stakeholders
- Creative**
Adopt a proactive attitude to innovation to address the challenges of tomorrow