



IN THE
**MIDDLE
EAST**

2023

Egis is an international player active in the **consulting, construction engineering and mobility service sectors**. We create and operate intelligent infrastructure and buildings capable of responding to the climate emergency and helping to achieve more balanced, sustainable and resilient territorial development. With operations in **120 countries**, Egis places the expertise of its **16,000 employees** at the disposal of its clients and develops cutting-edge innovation accessible to all projects. Through its wide ranging fields of activity, Egis is a central player in the collective organisation of society and the living environment of citizens all over the world.

Egis' goal is to acquire a position as a leading figure, in terms of market share and reputation, in all its target geographies. This means reaching critical mass in all these zones, which globally entails a target of doubling business in the next five years. The development strategy revolves around three main priority areas: transportation and mobility of the future, sustainable city construction, and energy transition - in an integrated approach encompassing eco-design, ecoconstruction and sustainable operation. **To meet the challenges of climate change**, Egis is pursuing an ambitious strategy by positioning itself in **low-carbon energies**, with growth in its nuclear activity and the ambition to become **a leader in the renewable energy sector**.

IMPACT
the future

**Our driving force
and our ambition.**

Egis worldwide

AMERICAS

6 countries
10 locations
1,400 employees

EUROPE

17 countries
79 locations
8,900 employees

AFRICA

14 countries
14 locations
550 employees

MIDDLE-EAST

8 countries
12 locations
2,600+ employees

ASIA-PACIFIC

13 countries
27 locations
1,350 employees

SOUTH ASIA

3 countries
2,800 employees

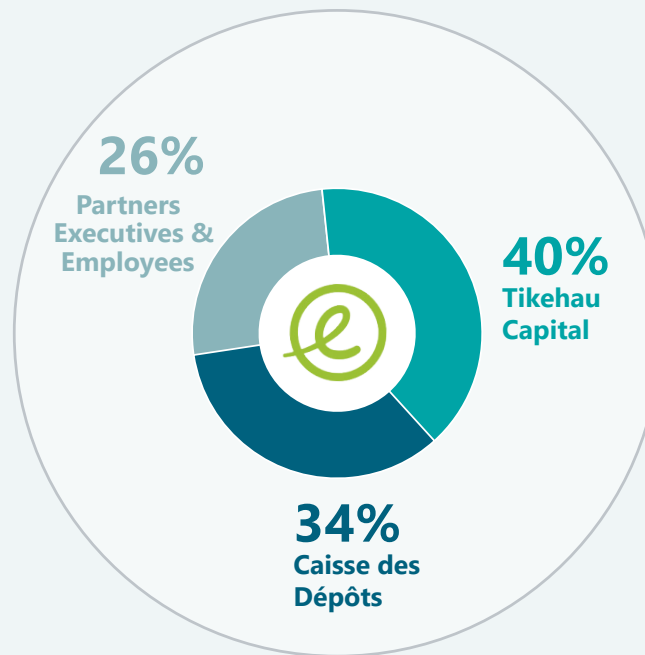
Key figures



2022 Turnover



Our shareholder structure



Rankings



Operations



Our values



A RESPONSIBLE
COMPANY



A PEOPLE FIRST
COMPANY



A CREATIVE
COMPANY

Our ethics in action



ISO 37001 CERTIFICATION



**Egis' anticorruption
management system**



In line with our ethics policies, we will adopt a firm zero-tolerance approach to ethics and compliance issues:

Reinforce ethical behaviour in line with the group's values
Ensure our practices comply with national and international integrity regulations

Sustainability

We're proud to lead the way in sustainable infrastructure, mobility and energy, innovating across the entire value chain and every aspect of the built environment. Whether it's fighting climate change, cutting carbon emissions or protecting biodiversity, sustainability is at the heart of every project.

Climate emergency, our absolute priority

Our 5 Commitments

to take concrete action for the environment on a daily basis

- 1 Reduce our greenhouse gas emissions
- 2 Strengthen carbon sequestration
- 3 Evolving our business portfolio in line with the Paris Agreement
- 4 Strengthen the resilience of territories and infrastructures
- 5 Reduce emissions from our clients' projects



A wide range of engineering services and operational solutions to fight against climate change and biodiversity erosion

The use of low-carbon alternatives with equivalent timeframes and costs on operations and projects entrusted to us

Creativity is a founding value of the Egis group. Our operational teams are committed to providing innovative solutions, particularly in the context of projects entrusted to us by our clients.

All this creativity is illustrated by this innovation book, which has become a must have, presenting more than 50 innovations in 4 main areas: mobility and transport of the future, building sustainable cities, ecological and energy transition and engineering 4.0.



Our Middle East Footprint



8 active countries
12 locations
17 % of global turnover
US\$ 200M of global turnover in 2022


700+
 COMPLETED PROJECTS
 IN THE MIDDLE EAST


3000+
 EMPLOYEES IN THE
 MIDDLE EAST

INTERNATIONAL SUBSIDIARIES

Voltere
 by @egis




ARCHITECTS



WW+P

MIDDLE EAST SUBSIDIARIES

WME
 @egis GROUP

waagner biro
 bridge services
 @egis GROUP

U+A


 PROJACS ACADEMY
 by @egis

Our 10 strategic priorities to 2026

1

Contributing to global **carbon neutrality** by 2050

2

Become a **leading industry figure**

3

Accelerate in Egis' most **successful markets and zones**

4

Impose the **transition to a low-carbon future** as the Group's third pillar

5

Place **intelligence** at the heart of cities and mobility

6

Stay **close to our clients**

7

Step up our **development in Southeast Asia**

8

Link up the **chain of expertise**

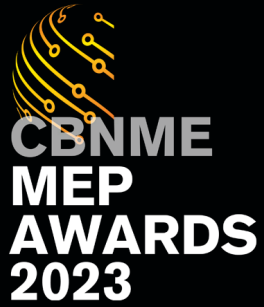
9

Enhance **technical and digital excellence**

10

Help our employees grow, and continue to attract **new talent**

Our awards



**MECHANICAL PROJECT OF THE YEAR
INNOVATION PROJECT OF THE YEAR
(UAE Pavilion Expo2020)**



**MULTI-DISCIPLINARY
CONSULTING
COMPANY OF THE YEAR 2022**

**Mechanical
Electrical &
Plumbing AWARDS
2022**
MIDDLE EAST

**RETROFIT PROJECT
OF THE YEAR AWARD
(Atlantis The Palm - Domestic
Hot Water Project)**



Our partnerships






Egis is a Member/Industry Partner of the Emirates Green Building Council.

The Emirates Green Building Council (EmiratesGBC) is an independent forum, formed in 2006 with the goal of advancing green building principles for protecting the environment and ensuring sustainability in the United Arab Emirates. The formation of EmiratesGBC was considered a milestone and a break through towards creating and maintaining a sustainable built-environment and protecting the ecosystem in the UAE, which has become a model for the region to follow.

Our expertise

Energy & Sustainable Cities

-  Environment, Water & Energy, Nuclear
-  Façade & Sustainability
-  Architecture
-  Building Engineering

Transportation

-  Urban Transport & Infrastructure
-  Intercity Transport
-  Structures

Consulting & Operations

-  Advisory
-  Aviation
-  Operations & Maintenance



Energy & Sustainable Cities



Environment, Water & Energy, Nuclear



Façade & Sustainability



Architecture



Building Engineering





Environment



Rehabilitation of Three Dumpsites

KUWAIT

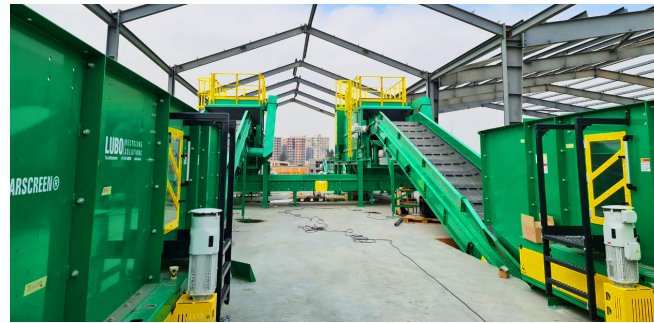
The rehabilitation of three dumpsites, following a detailed site assessment, data collection and environmental impact assessment.



Environmental Conservation Measures for the Spine In NEOM

SAUDI ARABIA

Assessment of environmental conservation measures including ecology assessments, trees and shrubs survey, Spiny-Tailed lizard survey, heritage and archaeology assessment, and baseline dust and noise monitoring reports.



Kitchener Drain Depollution Solid Waste Management

EGYPT

Project implementation support and construction supervision for the depollution of the drain and its catchment area, improving the health and environmental conditions in three governorates.



Coral Reef Restoration in the Arabian Gulf

QATAR

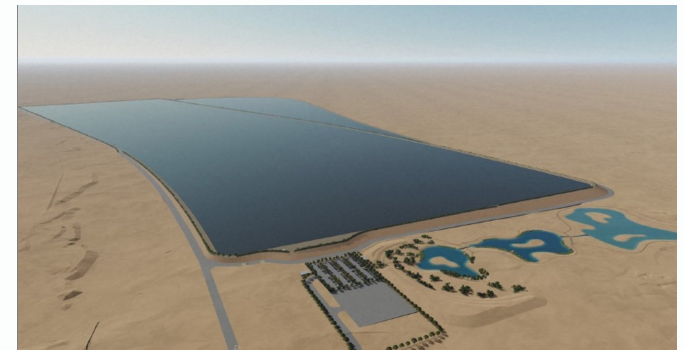
Deployment of a new generation of artificial reefs that are developed to enhance coral larvae settlement and survival. Deployed close to healthy coral reefs, these artificial reefs are passively colonized by local coral species and develop into thriving coral reef units.



Rehabilitation of Al Karaana Lagoon

QATAR

Design and works supervision to rehabilitate the lagoon in five major phases: ecological survey, design, clean-up, and disposal of all sources of pollution, rehabilitation of the nature



TSE Lagoon

QATAR

Development of the detailed design of hydraulics, earthworks, infrastructure, and buildings, along with the Environment Management Plan and the Environmental Impact Assessment to create facilities capable of storing 130,000m³ of recycled water per day in winter, with a storage capacity of over 20 million m³.



Water, Energy & Nuclear



Sharjah's Waste to Energy Plant

UNITED ARAB EMIRATES

Design review for the development of a waste to energy facility in the Emirate of Sharjah that will use up to 37.5 tonnes of unrecyclable solid waste an hour to generate 30MW of electricity, supplying electricity to 28,000 households and diverting over 300,000 tonnes of waste from the landfills.



Baraka Seawater Desalination Plant

OMAN

Design review and construction supervision as the Owner's Engineer for the development of the largest plant in Baraka to cater for the increasing water demand in Oman.



Al Shuqaiq-3 IWP Desalination Plant

SAUDI ARABIA

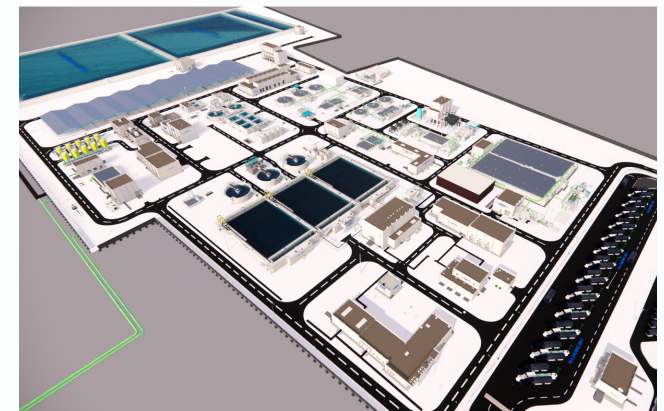
Site supervision and contract management services for the Al Shuqaiq-3 IWP Desalination plant. The plant will use reverse osmosis (RO) membrane technology with the capacity to produce 450,000m³ of fresh water daily.



Oman Water Sector Restructuring

OMAN

Concept and detailed design based to best structure for planning and operational delivery of water and wastewater infrastructure services in Oman as well as its implementation to improve the performance of the country's current water and wastewater services.



Qatar Integrated Industrial Wastewater Treatment Works (IIWWTW)

QATAR

Design, build, operate and maintain phase 1 of IIWWTW, which will provide treatment for up to 10,000m³/d of tankered industrial wastewaters arising from light industries generated within the Doha Industrial Area Catchment.



Façade & Sustainability



Palestine Museum
PALESTINE

Project Management throughout the design, tendering, construction, and LEED rating process of Palestine's first green building following the LEED rating system. Energy - saving measures will help the Museum save 15% of its annual energy consumption and 48% of its water consumption.



Muscat International Airport
OMAN

Façade, access and BMU consultancy services including reworking of the façade systems design, with construction support, technical reviews and site inspections for the new international airport terminal. The building, is a significant piece of infrastructure for the area, accommodating up to 40 flights an hour.



National Bank of Kuwait Tower
KUWAIT

Project management and LEED Certification administration of National Bank of Kuwait's headquarters. The iconic tower is 300m high spread over 60 floors and is **LEED Gold certified** for the sustainability, design and eco-friendly nature of the building.



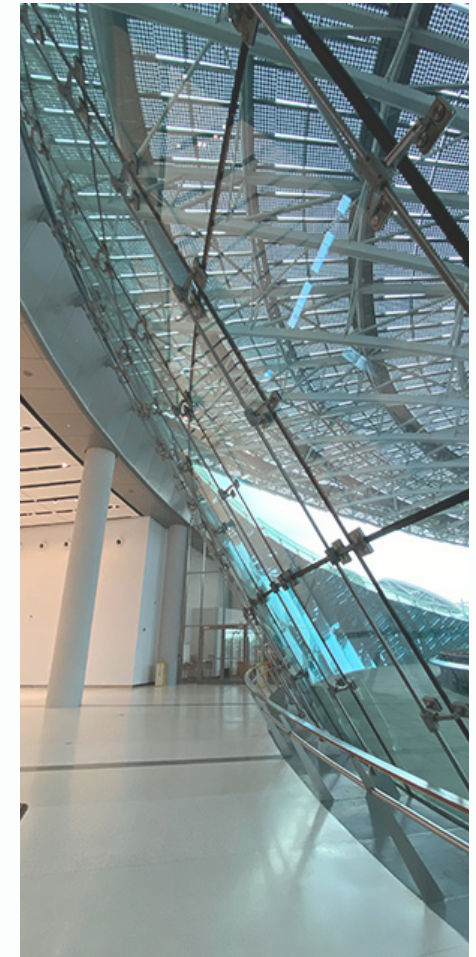
UAE Pavilion Expo 2020 Dubai
UNITED ARAB EMIRATES

Façade, building maintenance consulting, AV/IT engineering support and sustainable design for the UAE Pavilion, a major attraction at Dubai's Expo 2020. The pavilion's moveable roof structure consists of a hybrid system between a shell and a portal frame, composed of 28 wings.



Swiss International School in Dubai
UNITED ARAB EMIRATES

Full range of engineering services, including structural, building, fire, infrastructure, and traffic engineering, as well as sustainability consultancy and the main consultant to design and supervise the construction of the new wing. The primary and secondary school buildings were the first in the region to be low-energy certified by the MINERGIE Association, Switzerland.



Terra - The Sustainability Pavilion
UNITED ARAB EMIRATES

Structural design and engineering of all cable façades systems including the IGU glass and custom patch fittings of one of the top three attractions of Expo2020. The sustainability drivers for the pavilion were net zero energy and water.



Architecture



Park Heights I

UNITED ARAB EMIRATES

A prime residential tower comprised of a total of 270-, one-, two- and three-bedroom apartments, supported by community retail, a multi-purpose room, a full equipped gymnasium, and an outdoor infinity edge pool.



Dubai 2020 Rail Link

UNITED ARAB EMIRATES

The Dubai 2020 Rail Link is a 15-km metro linking to the Expo 2020 site. Dubai Expo 2020 was one of the most important private sector events in the recent history of the United Arab Emirates.



Bluewaters Residences

UNITED ARAB EMIRATES

Architecture, Master planning, Sustainability and CGI for the residences which comprise of 10 elegant mid-rise buildings providing 698 apartments, 4 penthouses, and 17 townhouses. The development offers a premium lifestyle with residential amenities.



Al Seef

UNITED ARAB EMIRATES

Architecture, Master planning, and CGI of the contemporary area which has activated 670m of the Dubai Creek waterfront with boutique food and beverage, retail, hospitality, and marina amenities over a total of GFA of 85,000sqm.



Amaala Eco Hotel

SAUDIA ARABIA

The eco-luxury architecture and interiors will be in line with Amaala's sustainable development approach. The resort will include a large variety of facilities such as lush green gardens, a stunning Leisure Deck, an extensive Kids Club as well as an exceptional Multipurpose Venue for events and performances.



Green Planet

UNITED ARAB EMIRATES

Unlike any other building in Dubai, The Green Planet recreates the enchanting world of a tropical forest with over 3,000 plants and animals and the world's largest indoor manmade and life-sustaining tree.



Building Engineering



Yas Arena

UNITED ARAB EMIRATES

Peer review for a large multi-purpose arena project. The arena would provide a year-round event space for sports and entertainment events.



SRG Residential Tower

UNITED ARAB EMIRATES

Structural engineering, building services and AV/IT for this unique tower that required the MEP engineering to be actively involved in analysis techniques that would not normally exist in other projects.



Jeddah Pearl Hotel and Serviced Apartments

SAUDI ARABIA

Full engineering services for the 5-star hotel tower comprising of a 24-storey hotel building and a 17-storey residential building. The high end façade is key to the client's vision, therefore integration of the MEP systems into the façade is fundamental within the design.



Nakheel Mall & Palm Tower

UNITED ARAB EMIRATES

Building services, fire and structural engineering, sustainability, AV/IT consultancy and roads and infrastructure as the Lead engineer for Nakheel Mall and Palm Tower. Palm Tower comprises 300 hotel rooms and 200 serviced apartments.



Amaala Luxury Resort

SAUDI ARABIA

Amaala is a **transformational project** which incorporates a seven-star luxury hospitality experience on the Red Sea and is set to become a flagship of 'contemporary KSA', an aspiration strategy which is in line with the Saudi Vision 2030. Essentially, the project consists of three luxurious new resort destinations; Triple Bay, The Island and Miraya.



Opera Grand Tower

UNITED ARAB EMIRATES

Building and structural services, fire, acoustic and vertical transport engineers for the 64-storey residential project for the Opera District cultural hub in the Downtown area of Dubai.



Transportation



Urban Transport & Infrastructure



Intercity Transport



Structures



Urban Transport



Doha Metro

QATAR

Project management for the Doha automatic metro system which comprises of four lines, 76 km of track (of which 55 km is underground and 17 km on viaducts) and 28 stations. It links the airport to the business centre and stadiums.



Alexandria Raml Tram

EGYPT

Consultancy services for engineering, procurement, and construction management to rehabilitate the Alexandria Raml Tram by upgrading and enhancing the tramline into a modern and efficient one with up-to-date infrastructure, systems and rolling stock, while improving the associated urban environment.



Madinah Metro

SAUDI ARABIA

Feasibility studies and preliminary design of Madinah metro to facilitate the mobility of the several million pilgrims that visit the holy city of Madinah each year. The plan included 95km of rails divided into three lines: green, blue and red with 25 km of underground and more than 48 km above ground.



Greater Cairo Metro, Line 3, Phase 3

EGYPT

Project Management Consultancy Services for Line 3 which will connect Imbaba in the west of the city with Cairo International Airport in the east, with total length of 45.5 km and 34 stations.



Riyadh Metro

SAUDI ARABIA

Project and construction management for 6 automated lines and 92 stations covering 177km - 60km underground, 36km over ground and 81km of viaduct sections.



Bahrain Metro

BAHRAIN

Technical advisory and consultancy services following the recommendations made in Strategic Transport Master Plan for the Bahrain Metro project, phase 1 which consists of two lines, blue and red and will run for a total of 28.6 km.



Urban Infrastructure



Hawana Salalah Masterplan

OMAN

Hawana Salalah offers a variety of real estate options including villas, townhouses, and apartments, along with a marina, and an abundance of outdoor space. The destination also features a series of hotels, restaurants, nightlife options, an aqua hut with beach courts, water sports and many other leisure activities for all visitors to enjoy.



Travel Forecast Models, Riyadh

SAUDI ARABIA

Consultancy services for the development and maintenance of the upgraded travel forecast model for Riyadh. This includes maintaining the existing transport model and developing the updated version by upgrading from 1,500 zones to 3,000 zones, taking into consideration the socio-economic and demographic factors in the city.



Katara

QATAR

Project management and technical support services for the cultural complex which consists of several Arabian style buildings, art organizations, museums, and galleries, as well as retail, restaurants and coffee shops.



Jeddah City Projects

SAUDI ARABIA

Technical review services to several of Jeddah's PMO projects reviewing the infrastructure and engineering component, as well as the urban planning and development component.



AIUla Infrastructure Program

SAUDI ARABIA

Developing, monitoring and administrating the overall Infrastructure Delivery Program, in coordination with the Asset Delivery Program, for the overall AIUla County (22,500 km³) aimed at making AIUla a sustainable, innovative and inclusive development designed to benefit the local population and visitors from around the world.



Green Riyadh

SAUDI ARABIA

Program management and technical support services for the implementation of the 'Green Riyadh' strategy contributing to increasing the per capita share of green space in the Saudi capital.



Intercity Transport



Sheikh Khalifa Bin Salman Highway

BAHRAIN

Pre-consultancy services to upgrade and improve the existing Sheikh Khalifa Bin Salman Highway, by widening it to 5 lanes



Al Ghouse Road

KUWAIT

Supervision services for the construction, rehabilitation, and maintenance of one of Kuwait's major collector roads, including the rehabilitation and widening of 11 km of road, the construction of 9 intersections (3 elevated) and 3 footbridges, the creation of road services, and relocation of all existing utilities.



Fifth Industrial Junction in Sharjah

UNITED ARAB EMIRATES

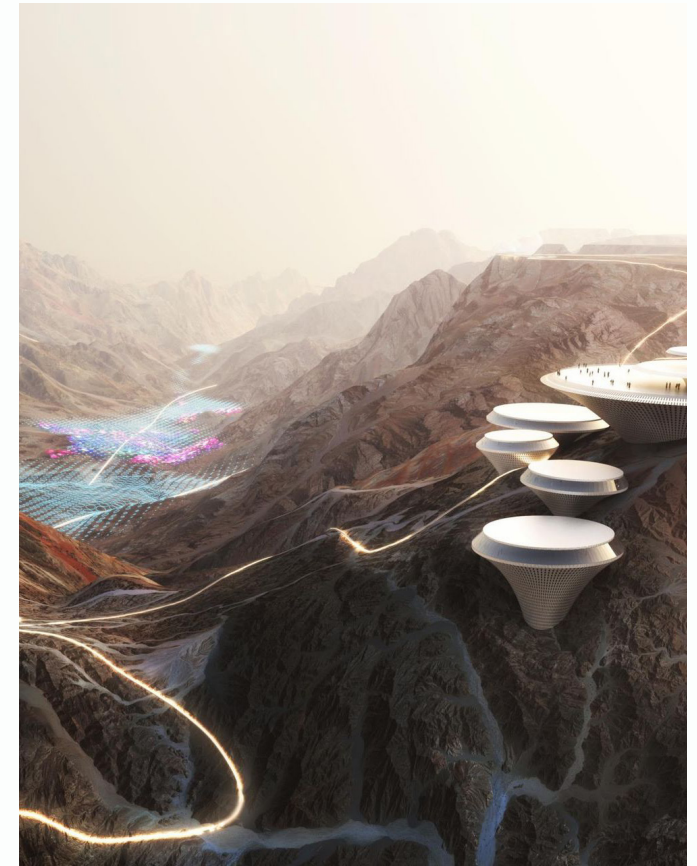
Project Management of the 12km junction which included the widening of the existing road, the construction of several interchanges or upgrading the existing ones to provide free flow movement.



Ethad Rail

UNITED ARAB EMIRATES

Project Management Consultancy for the 1,200km railway network linking freight facilities and passenger stations, and forming a part of the planned Gulf Cooperation Council (GCC) railway network.



NEOM Highway 55

SAUDI ARABIA

Concept design from Duba Port to Gayal (95km) including the study of existing conditions, design development for recommended options and design interfaces management. In addition to the design of interchanges 1, 2, and 3 on NEOM's Highway 55.



Structures



Qatar Expressway
QATAR

Pre- and post- contract consultancy services for the Qatar Expressway Projects to improve the country's road network. The project will construct 9 multi-level interchanges comprising of 2 bridges, 7 underpasses, 1 tunnel and 1 flyover that will provide efficient connectivity between Al Rayyan Road and other widely used roads.



Yas Marina Hotel Access Bridge
UNITED ARAB EMIRATES

Design and built of the only land connection to the Marina Hotel, which is surrounded by the Formula 1 racetrack. This special bridge consists of two reinforced earth walls, a steel Warren Truss Bridge and a stream-lined composite panel cladding with lighting and two



Za'abel Bridge
UNITED ARAB EMIRATES

The design and built of the cable-stay bridge which consists of a long main support suspended from a tower with inclined hangers. The towers can be designed in numerous ways and the cables can be fixed in a fan-shaped or harp-shaped arrangements. As with suspension bridges, guarding against wind-based vibration is extremely important.



Abu Dhabi National Exhibition Centre Bridge
UNITED ARAB EMIRATES

Fabrication of the ADNEC Bridge from 600 tons of steel and 132 glazed panels. It is 162 m long and spans all eight lanes of the Khaleej Al Arabi Coast Road adjacent to ADNEC.



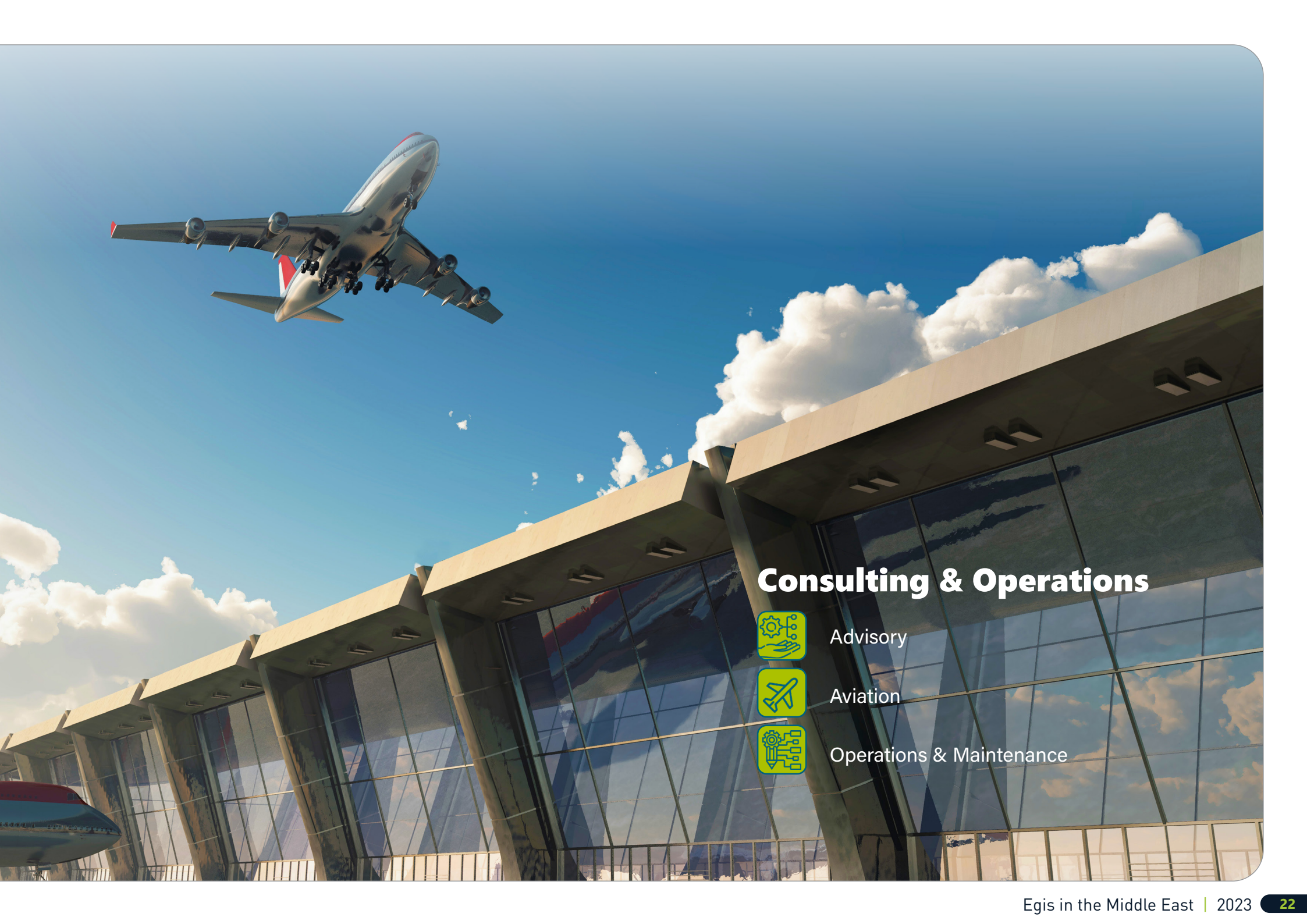
Maqta Bridge
UNITED ARAB EMIRATES

Design and built of the iconic Al Maqta Bridge with a total length of approximately 300m. This bridge was the first landmark bridge in Abu Dhabi and the first solid connection of Abu Dhabi Island with the main land constructed in 1967.



Abu Dhabi Ports Company
UNITED ARAB EMIRATES

A framework contract for **engineering services including Master planning, construction management, port operations, value engineering, cost estimating, quantity surveying and architecture services.**



Consulting & Operations



Advisory



Aviation



Operations & Maintenance



Advisory



Ecodge Project

SAUDI ARABIA

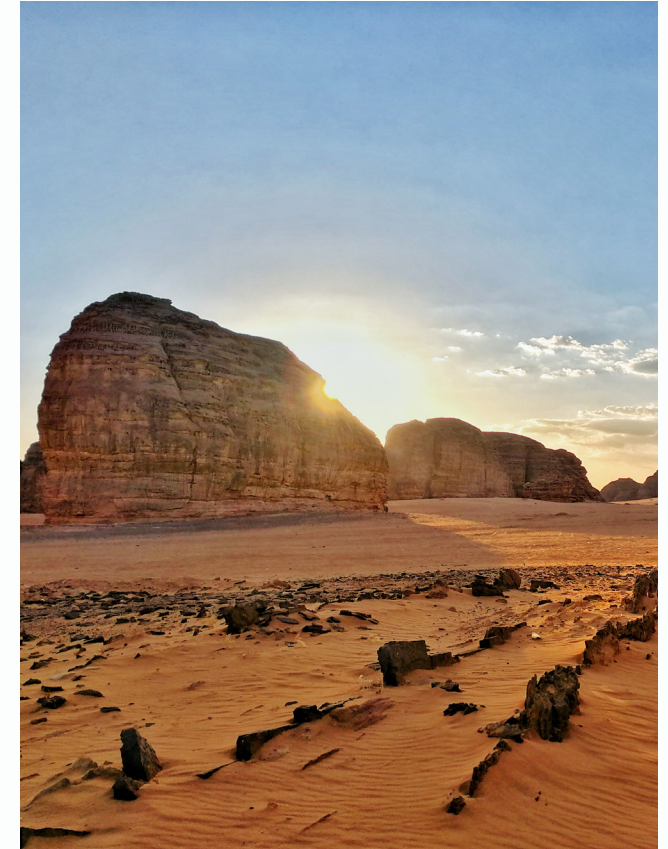
Market and Feasibility Study for a waterfront, ecodge project located on the Red Sea coast.



Q Express

SAUDI ARABIA

Financial feasibility assessment and recommendation on optimal staffing for a rail line Saudi's capital Riyadh, to Qiddiya.



Al Ula Heritage Valley

SAUDI ARABIA

Programming development of the new visitor attraction including the intended audience and visitation aspirations, rationale underpinning the proposed hospitality development program and supporting materials and data to populate the RCU's business plan assumptions.



National Museum of Egyptian Civilization

EGYPT

Marketing strategy and business plan for the museum which will display a collection of 50,000 artefacts, presenting Egyptian civilization from prehistoric times to the present day.



Abu Dhabi Louvre Museum

UNITED ARAB EMIRATES

Market study and attendance forecast for both UAE residents and tourists to assist in the positioning on the museum.



Aviation



Bahrain International Airport

BAHRAIN

Master plan for the concept, preliminary and detailed design for airside and landside, including buildings, tender management, and construction supervision for the Cargo Express Village.



UAE General Civil Aviation Authority (GCAA)

UNITED ARAB EMIRATES

UAE Airspace restructuring which included Program Management, quality, safety & data management, airspace planning & design, verification, validation & publication, ATC migration, transition & contingency planning and training & implementation.



Riyadh Airport

SAUDI ARABIA

Project management services for the development and expansion of Saudi Arabia's second largest airport.



Sharjah International Airport

UNITED ARAB EMIRATES

Project & Construction Management of Sharjah International Airport which included a new departure area, expansion of the passenger check-arrivals area and food court. Externally the airports three aerobridges were replaced and another three added and additional parking was added.



Jeddah Airport

SAUDI ARABIA

Review and preparation of standard operating procedures (SOPs) and operations manuals for the new terminal, program oversight, ATC systems integration, ANS Consultancy & Transition and Design Services (Structure & MEP).



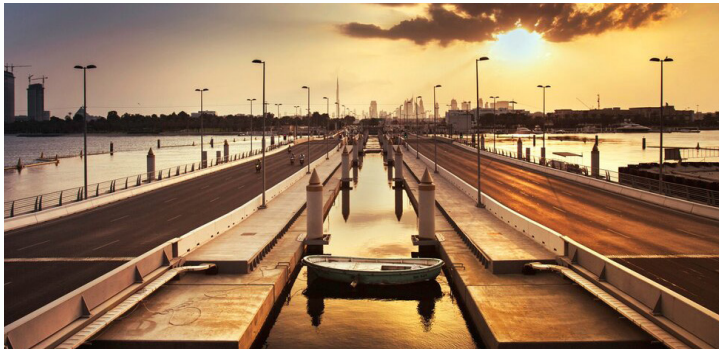
MATARAT

SAUDI ARABIA

Consulting services, establishing phased project management portals, updating airport project management policies and procedures, and providing technical support for planning, designing, and following up the implementation of capital projects with MATARAT subsidiaries for 26 airports in Saudi Arabia.



Operations & Maintenance



Floating Bridge

UNITED ARAB EMIRATES

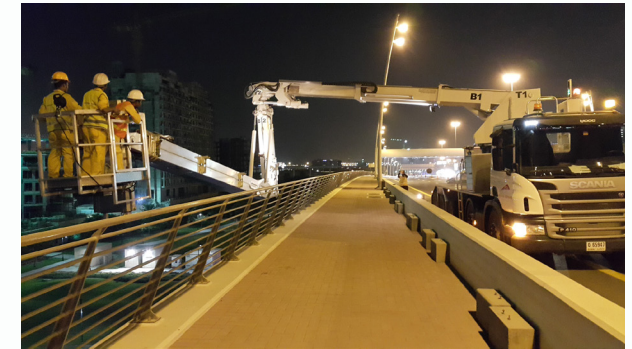
Design, build, operation & maintenance of Dubai's floating pontoon bridge with the width of 2 x 22m and a total length of 365m, moving 6,000 vehicles per hour at peak capacity across both directions.



Al Maktoum Bridge

UNITED ARAB EMIRATES

Operation and Maintenance of Al Maktoum Bridge Lift Span and its services, the works include but not limited to inspection and monitoring of all aspects required for a smooth and undisturbed performance of the Lift Span.



Road Structures in Dubai

UNITED ARAB EMIRATES

Routine, preventive and corrective maintenance of multiple road and bridge structures across Dubai. The Maintenance services includes all works associated with the structural elements, mechanical systems, electrical systems, fire alarms and fire fighting equipment.



Marine and Coastal Engineering Structures

UNITED ARAB EMIRATES

Maintenance of marine and coastal structures including beach improvement and protection solutions, beach stabilization and nourishment, maintenance of water transport stations, inclusion of groynes and maintenance of marina and berthing facilities across the UAE.



Operations & Maintenance of Package Treatment Plants

QATAR

Management, operation, and maintenance of all Package Treatment Plant (PTP) facilities including O&M activities on any equipment, systems or units installed. This includes planned, preventive and reactive maintenance, overhauling and repair, refurbishment or enhancement of the site.



Pedestrian Bridges and Tunnels in Abu Dhabi

UNITED ARAB EMIRATES

Routine and corrective maintenance and rehabilitation of several pedestrian tunnels bridges around Abu Dhabi, including but not limited to the renovation and upgrade of the painting works, surface repair, joints sealant, tile works, handrails, channel grating.

Our Locations

UAE

Egis, Dubai
Dubai Digital Park
Building A1, 3rd floor, Unit 308
PO Box 34116
Dubai
United Arab Emirates

Egis Abu Dhabi Office

Unit No: RU05, Ground Level
ADNEC Grandstand
Khaeej Al Arabi street
P.O. BOX 31520
Abu Dhabi
United Arab Emirates

KSA

Egis, Riyadh
Hamad Tower - 12th Floor
King Fahad Road, Olaya
Riyadh 12212
Saudi Arabia

Egis AlUla Office

Azizia apartment
Opposite to Al Fattouh Masjid Azizia
AlUla 43514
Saudi Arabia

Egis Al Khobar Office

Adel Qashoghi Building - 10th Floor
Dhahran Street
Al-Khobar 31952
Saudi Arabia

Egis Jeddah Office

Rovan Tower - 4th Floor - Office 406
Al Rawdah district
Jeddah 23433
Saudi Arabia

QATAR

Egis Doha Office
Aamal Tower
9th Floor
West Bay
Doha 20690
Qatar

Inhabit Doha Office

West Bay-Bay Tower II
8th Floor
Office 828
Qatar Post: PO Box 14023
Doha
Qatar

BAHRAIN

Egis Manama Office
Manama Centre - Suite 607
6th Floor Entrance 2
Manama Center Bldg 114
PO Box 21674
Manama
Bahrain

KUWAIT

Mazaya Tower 3, 13th Floor
Kuwait City
PO Box 25944
Safat 13120
Kuwait

EGYPT

Egis Cairo Office
Cloud 9, 2nd floor
New Cairo
Cairo
Egypt

JORDAN

Egis Amman Office
Um Uthainah
Hekmat Al Massri Street
Building no.8
Office no.20
PO Box 1667
Zip Code 11821
Amman
Jordan

OMAN

Egis Muscat Office
Muscat Governorate
Matrah Province Ruw
112 P.O. Box 686
Muscat
Oman



IMAGINE. CREATE. ACHIEVE.
a sustainable future

www.egis-group.com