



# TRANSPORTATION IN THE MIDDLE EAST



# summary

- 01** . About Egis
- 02** . Egis Middle East
- 03** . Egis Transportation
- 04** . Project References





# About Egis



**01.**

# Key figures

## TURNOVER BREAKDOWN 2022

€1.6bn



**79%**  
Consulting & engineering



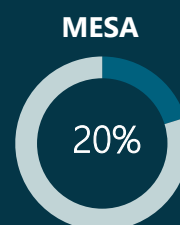
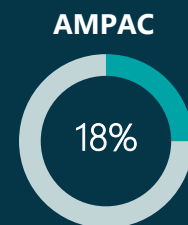
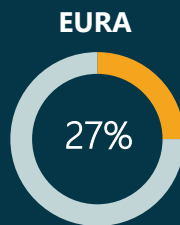
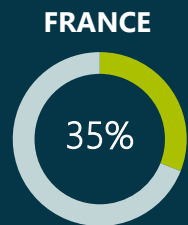
**21%**  
Operation & mobility services

 RAIL  
28%

 ROAD  
27%

 BUILDING  
25%

 OTHER  
20%



EURA: Europe . Africa  
AMPAC: Americas . Pacific  
MESA: Middle East . South Asia

**28**

ROAD OPERATING COMPANIES

**20**

AIRPORTS

**21**

URBAN PARKING CONTRACTS IN EUROPE

**26%**  
Partners, Executives & Employees

**40%**  
Tikehau Capital

**34%**  
Caisse des Dépôts

**ENR 21<sup>st</sup>** 

Engineering News Record global ranking\*

**1<sup>st</sup>**

FRENCH ENGINEERING COMPANY

**9<sup>th</sup>**

IN TRANSPORTATION MARKET\*

\*ENR TOP 225 ranking 2023



**18,000**

**EMPLOYEES**  
IN THE WORLD

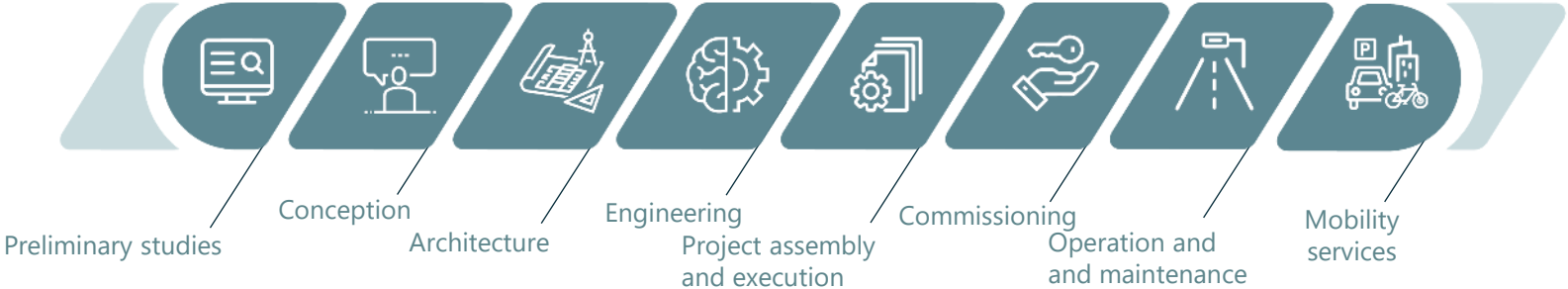
**75%** Consulting & engineering

**25%** Operation & mobility services

# Our global offer



## Throughout the project value chain







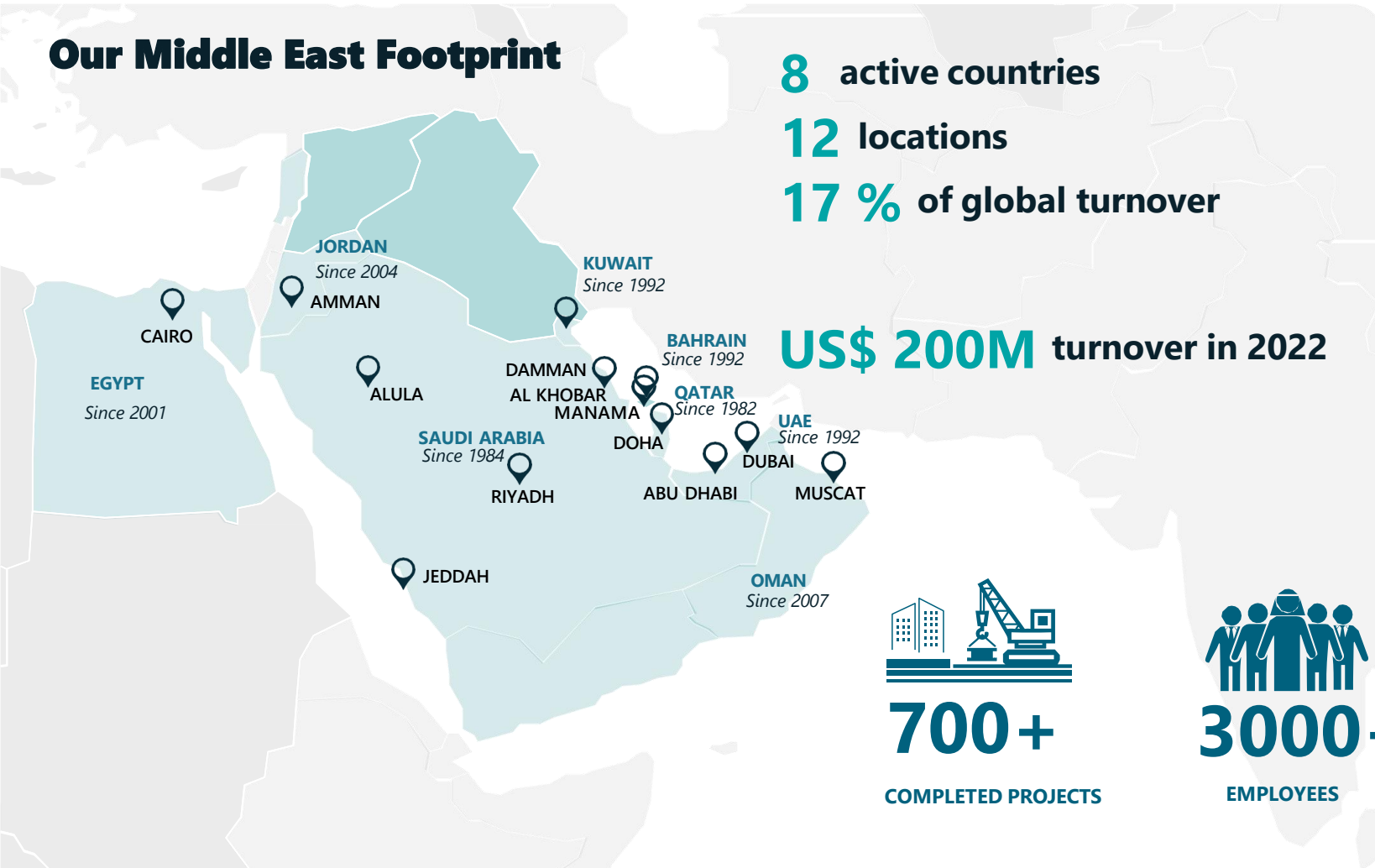
# Egis in the Middle East



02.

# Egis in the Middle East

## Our Middle East Footprint



### INTERNATIONAL SUBSIDIARIES IN THE MIDDLE EAST

**Voltere** by @egis

**Inhabit**

**ARCHITECTS**

**IO**

**WW+P**

### MIDDLE EAST SUBSIDIARIES

**WME** @egis GROUP

**waagner biro bridge services** @egis GROUP

**U+A** @egis GROUP

**PROJACS ACADEMY** by @egis

**Omrania** عمرانية @egis GROUP



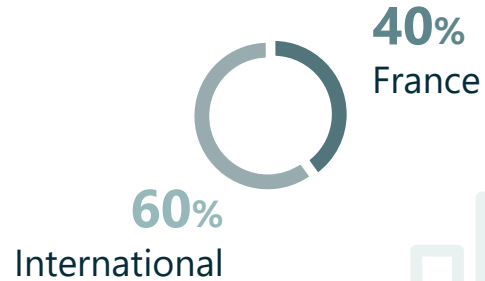


**TRANSPORTATION**  
BUSINESS LINE



# Transportation key figures

TURNOVER OF  
**€700 M**  
IN 2022



**7,000**  
ONGOING PROJECTS  
IN THE WORLD

PRESENCE  
IN MORE THAN  
**50**  
COUNTRIES



**5,000**  
EMPLOYEES

1,770 IN FRANCE

1,405 IN INDIA AND THE MIDDLE EAST

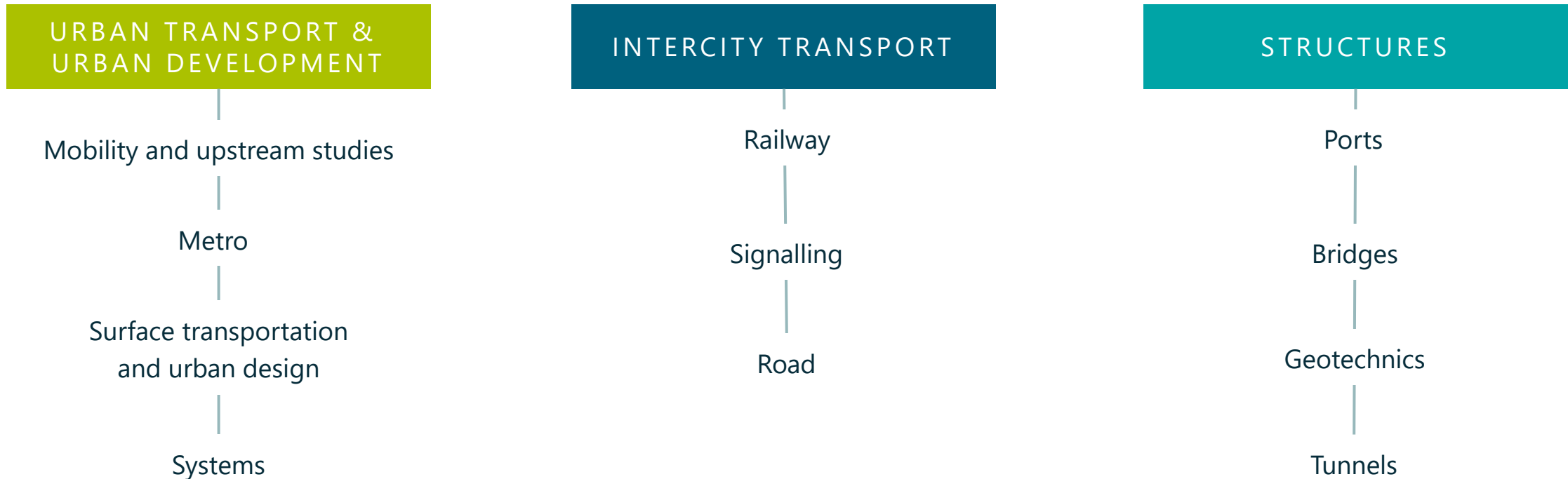
885 IN EUROPE - AFRICA

970 IN THE AMERICAS



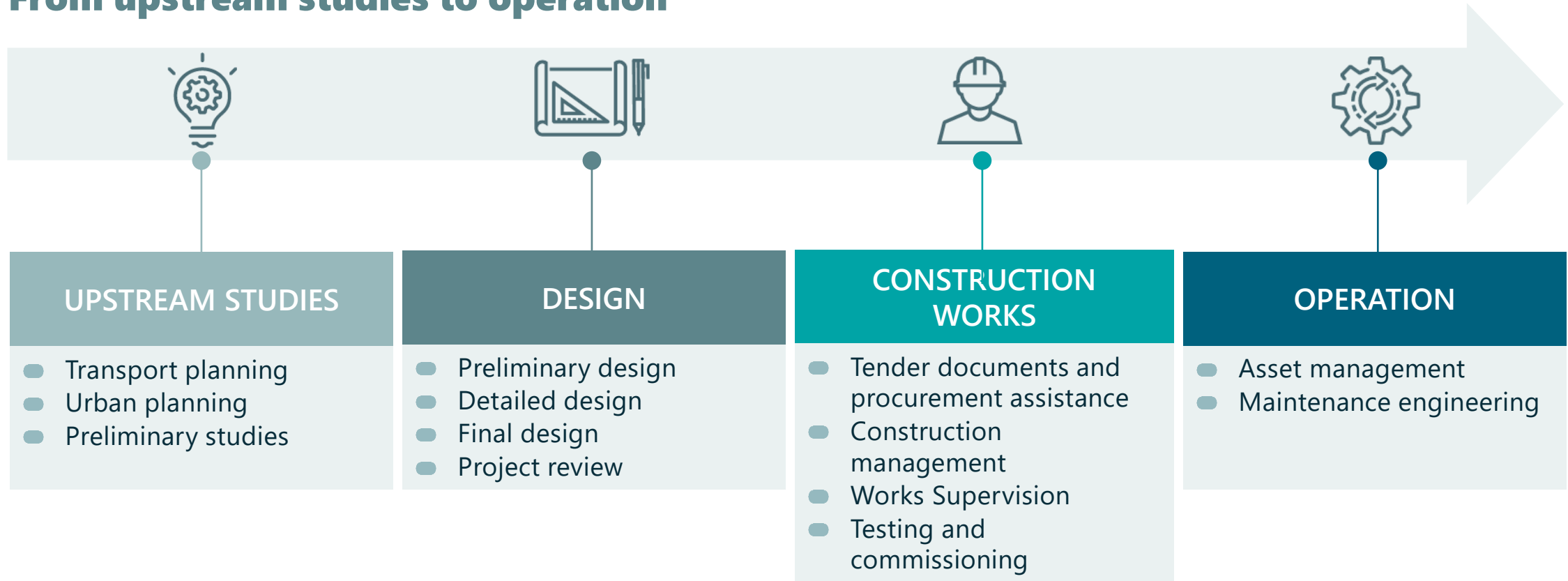
# Our service lines

In charge of project development and production throughout the world



# Our presence over the entire project life cycle

## From upstream studies to operation





# A strong urban transport experience



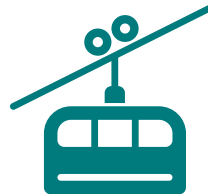
**+ 1400 km**  
Metro Rail  
Transit



**+ 900 km**  
Light Rail Transit  
2/3 of new generation LRT in  
operation



**+ 20 projects**  
Bus Rapid Transit



**6 projects**  
Cable Car Lines



# A 50-year experience in **railways**



**2,500**

rail engineers in the world

Operational presence  
in more than

**50**

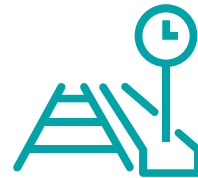
countries



**+ 2,000 km**

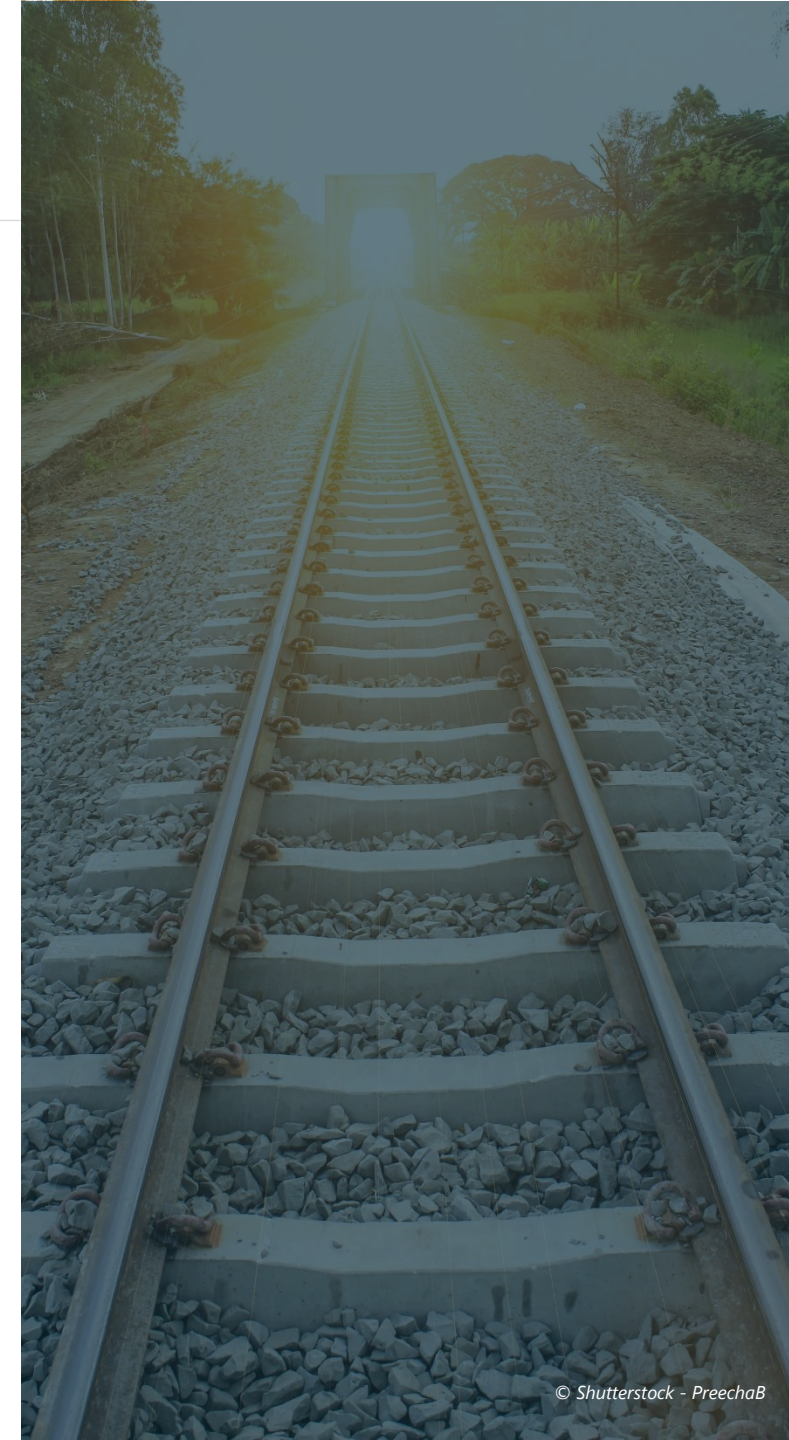
of **HSL** lines in operation

10 French & international projects



**+ 12,000 km**

of **railway** lines



# A 50-year experience in complex structures over the world

**+10 awards**

WORLDWIDE IN  
THE LAST FEW YEARS

**No. 1**  
IN GEOTECHNICAL ENGINEERING  
IN FRANCE FOR OVER 10 YEARS



**+ 2,500 km  
of bridges**

3,000 structures designed /  
100 exceptional ones



**+ 2,000 km  
of tunnels designed**  
+ 160 tunnels subject to design,  
consulting and expert services



**Thousands of km  
of motorway and  
railway projects**  
Over 500 retaining structures  
designed and supervised  
by our geotechnical teams

## Technical Excellence



### Awards & Prizes

- FIDIC & BIM Awards, Eiffel trophies (France)
- European Silver Award
- Lu Price (China), etc.



### Innovation

- Continuous investment in R&D
- Active participation in international research projects: IABSE, AFGC, etc.
- Training courses with universities



### Certifications:

- ISO 9001 - 14001, 55001, 37001
- OHSAS 18001 / OPQIBI





## Project Reference

02.

# Our Flagship Projects





# Main Rail Projects Across The World

## MAIN PROJECTS

LRT

MRT

Railway

Cable car

### FRANCE

- GRAND PARIS EXPRESS
  - Systems EPCM on lines 16,17 & 18 + 15 south
  - EPCM of civil engineering structures and infrastructures works for line 16
  - Coordination of the construction on lines 14, 16,17 & 15 south
- Lille MRT
- Lyon MRT - Lines A, B, C, D & extensions
- Marseille MRT
- RER EOLE Paris
- Rennes MRT
- CDG Express
- Grenoble LRT
- Lyon LRT - Lines 1, 2, 3 & T6 North
- Montpellier LRT - Lines 1, 2, 3 & 4
- Nantes LRT - Development of new tram lines
- Nice LRT - Lines 2, 3 & 4
- Paris LRT - Lines 3 & 6
- Ile-de-France Rail city Link T11 Express
- Brittany - Pays de Loire HSL
- South Europe Atlantic HSL
- Rhine - Rhone HSL
- Grenoble Cable Car
- Paris Cable Car A

### EUROPE

- Birmingham LRT
- Dublin LRT - Lines 1 & 2
- Irish National Network - Modernization of the signalization
- Design framework services for Network rail
- Luxembourg LRT
- Porto LRT
- Kista Stockholm LRT
- Lausanne MRT
- Belgrade MRT
- Rail Baltica - HSL section in Latvia
- Rail Baltica - Riga Station
- Poland - Creation of 2 lines
- Poland - Modernization of the line

### AFRICA & MIDDLE EAST

- Alexandrie LRT
- Cairo - People Mover
- Cairo MRT - modernization Line 2
- Alger LRT - Line 1
- Sidi bel Abbès LRT - Line 1
- Casablanca LRT - Lines 3 & 4
- Kenitra Tangiers Morocco - HSL
- Rabat LRT
- Downtown Nairobi - airport Jomo
- Jerusalem LRT
- Tel Aviv LRT
- Tel Aviv MRT
- Doha MRT - Lines 1, 2 & 3
- Dubai MRT
- Jeddah MRT
- Madinah MRT
- Riyadh MRT - Lines 1, 2 & 3
- GCC Railway

### ASIA

- Macao LRT
- Singapore MRT - Line North South
- Manila LRT - Line 1
- Palembang LRT
- Java Railway
- Surabaya LRT & Monrail
- Putrajaya LRT
- Phuket LRT
- Bangkok MRT - Lines blue, orange, pink & green
- Brisbane MRT - Electric Vehicle
- Calcutta MRT
- Chennai MRT - Lines 1 & 2
- Mumbai MRT - Line 3
- Nagpur MRT - Lines 1 & 2
- Delhi - Merrut
- Don Mueang-Suvarnabhumi-U-Tapao HSR
- Ulan-Bator Cable Car

### OCEANIA

- Auckland City Rail Link
- Brisbane European Train control system
- Brisbane MRT - Electric Vehicle
- Melbourne Metro tunnel
- Victoria High Capacity Metro Train
- Victoria X'Trapolis 2.0 trains
- Paramatta LRT
- Sydney - Waratah double deck train

### NORTH AMERICA

- New York MRT - Canaris Line
- Las Vegas LRT studies
- Montreal REM

### SOUTH AMERICA

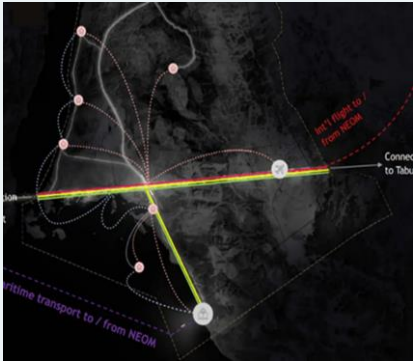
- Guadalajara MRT - Line 3
- Tren maya - tramo 4 & 5 south
- Medellin MRT - Line Patio - Talleres
- Regiotram de Occidente LRT
- Brasilia - Goiania - Passenger train
- Via Ferrea de Carajas - Freight
- Vitoria - Minas - Ferrovia Mixta
- Rail network national of Chile
- Santiago MRT - Line 3 & extension 6, 7



# Intercity Transport

## NEOM The Line ISA

Saudi Arabia



Independent Safety Assessor (ISA) for the railway system in THE LINE and the NEOM Industrial City Connector (NICC) which will comprise of: high-speed rail lines, freight rail lines, Metro/GMT rail lines, depot rail lines and platform loops.

## NEOM The Spine Operation Plan

Saudi Arabia



Operational and Technical Requirements for NEOM Backbone Rail and Transit System

## NEOM - Highway 55

Saudi Arabia



Concept Design -NEOM Highway 55 Road Capacity Study From Duba Port to Gayal (95km) (SO-06)

## Q-Express

Saudi Arabia



Comprehensive Financial, Economic, and Technical Feasibility Study of Connecting Riyadh City with Qiddiya Project with HHR Line

## GCC Railway within Saudi Arabia

Saudi Arabia



Preliminary Design and Tender Documents for GCC Railway in Saudi Arabia, a railway to connect Saudi Arabia with Qatar, UAE and Kuwait.

## Etihad Rail

UNITED ARAB EMIRATES



Project Management Consultancy for the 1,200km railway network linking freight facilities and passenger stations, and forming a part of the planned Gulf Cooperation Council (GCC) railway network.

# Urban Transport

## Doha Metro

QATAR



Project management for the Doha automatic metro system which comprises of four lines, 76 km of track (of which 55 km is underground and 17 km on viaducts) and 28 stations. It links the airport to the business centre and stadiums.

## Madinah Metro

SAUDI ARABIA



Feasibility studies and preliminary design of Madinah metro to facilitate the mobility of the several million pilgrims that visit the holy city of Madinah each year. The plan included 95km of rails divided into three lines: green, blue and red with 25 km of underground and more than 48 km above ground.

## Riyadh Metro

SAUDI ARABIA



Project and construction management for 6 automated lines and 92 stations covering 177km - 60km underground, 36km over ground and 81km of viaduct sections.

## Mashaaer Metro

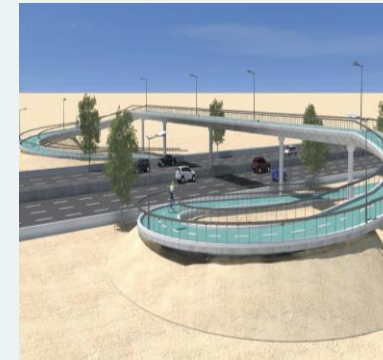
Saudi Arabia



- 1) Preliminary and Detailed Design
- 2) Program Management Office (PMO) For The Metro Mashaaer-al Mugadassah To Makkah Mashaaer Mugadassah

## Madinah Bus Rapid Transit (BRT)

Saudi Arabia



Project Management and Construction Management services, for the ongoing Madinah Bus Project.

## Bahrain Metro

BAHRAIN



Technical advisory and consultancy services following the recommendations made in Strategic Transport Master Plan for the Bahrain Metro project, phase 1 which consists of two lines, blue and red and will run for a total of 28.6 km.



# Urban Infrastructure

## Travel Forecast Models, Riyadh

SAUDI ARABIA



Consultancy services for the development and maintenance of the upgraded travel forecast model for Riyadh. This includes maintaining the existing transport model and developing the updated version by upgrading from 1,500 zones to 3,000 zones, taking into consideration the socio-economic and demographic factors in the city.

## Katara

QATAR



Project management and technical support services for the cultural complex which consists of several Arabian style buildings, art organizations, museums, and galleries, as well as retail, restaurants and coffee shops.

## Jeddah City Projects

SAUDI ARABIA



Technical review services to several of Jeddah's PMO projects reviewing the infrastructure and engineering component, as well as the urban planning and development component.

## AlUla Infrastructure Program

SAUDI ARABIA



Developing, monitoring and administrating the overall Infrastructure Delivery Program, in coordination with the Asset Delivery Program, for the overall AlUla County (22,500 km<sup>3</sup>) aimed at making AlUla a sustainable, innovative and inclusive development designed to benefit the local population and visitors from around the world.

## Green Riyadh

SAUDI ARABIA



Program management and technical support services for the implementation of the 'Green Riyadh' strategy contributing to increasing the per capita share of green space in the Saudi capital.



# Structures

## Qatar Expressway

QATAR



Pre- and post- contract consultancy services for the Qatar Expressway Projects to improve the country's road network. The project will construct 9 multi-level interchanges comprising of 2 bridges, 7 underpasses, 1 tunnel and 1 flyover that will provide efficient connectivity between Al Rayyan Road and other widely used roads.



## Za'abel Bridge

UNITED ARAB EMIRATES



The design and built of the cable-stay bridge which consists of a long main support suspended from a tower with inclined hangers. The towers can be designed in numerous ways and the cables can be fixed in a fan-shaped or harp-shaped arrangements. As with suspension bridges, guarding against wind-based vibration is extremely important.

## Maqta Bridge

UNITED ARAB EMIRATES



Design and built of the iconic Al Maqta Bridge with a total length of approximately 300m. This bridge was the first landmark bridge in Abu Dhabi and the first solid connection of Abu Dhabi Island with the main land constructed in 1967.

## Yas Marina Hotel Access Bridge

UNITED ARAB EMIRATES



Design and built of the only land connection to the Marina Hotel, which is surrounded by the Formula 1 racetrack. This special bridge consists of two reinforced earth walls, a steel Warren Truss Bridge and a streamlined composite panel cladding with lighting and two

## Abu Dhabi National Exhibition Centre Bridge

UNITED ARAB EMIRATES



Fabrication of the ADNEC Bridge from 600 tons of steel and 132 glazed panels. It is 162 m long and spans all eight lanes of the Khaleej Al Arabi Coast Road adjacent to ADNEC.

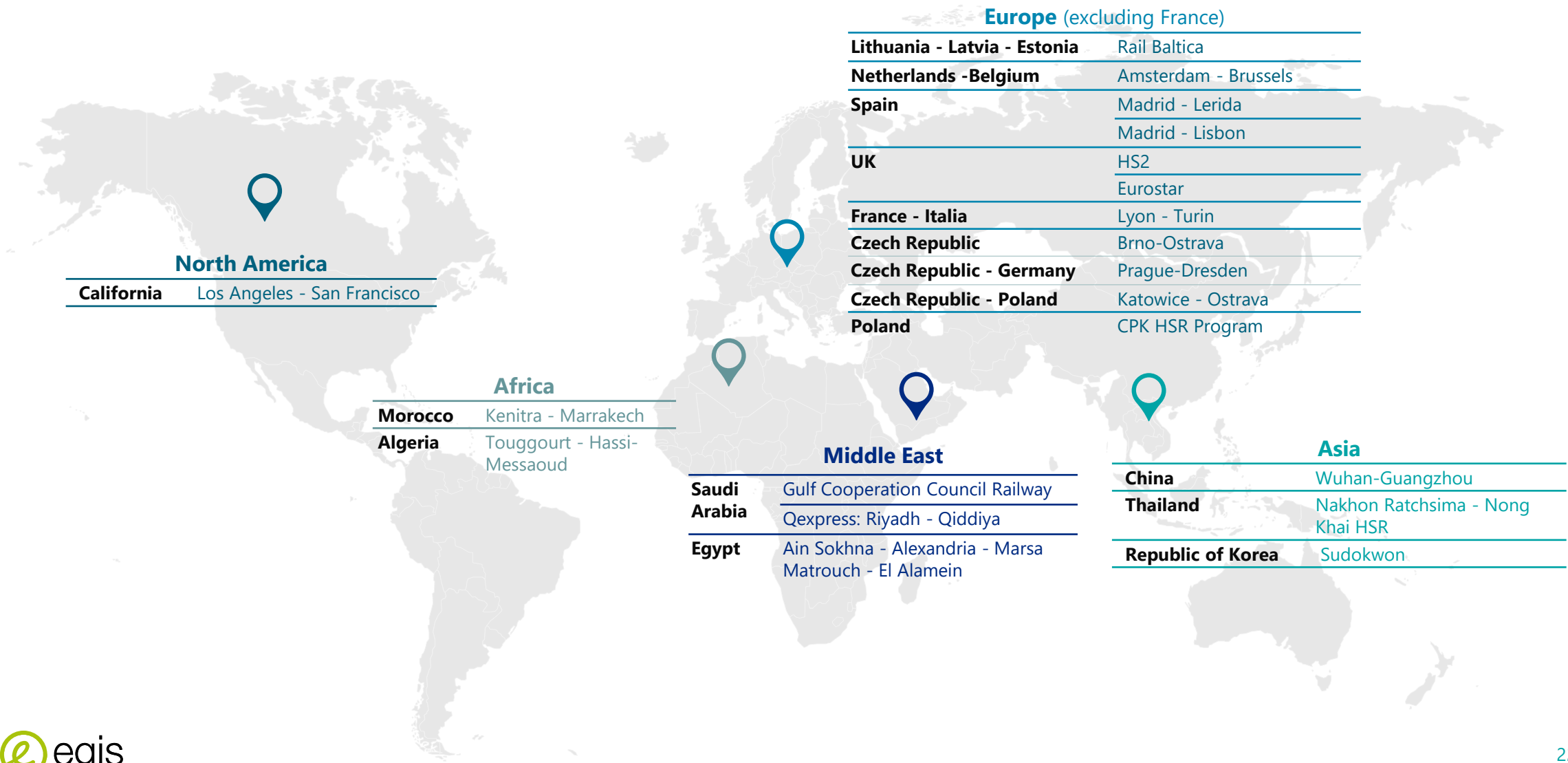
## Abu Dhabi Ports Company

UNITED ARAB EMIRATES

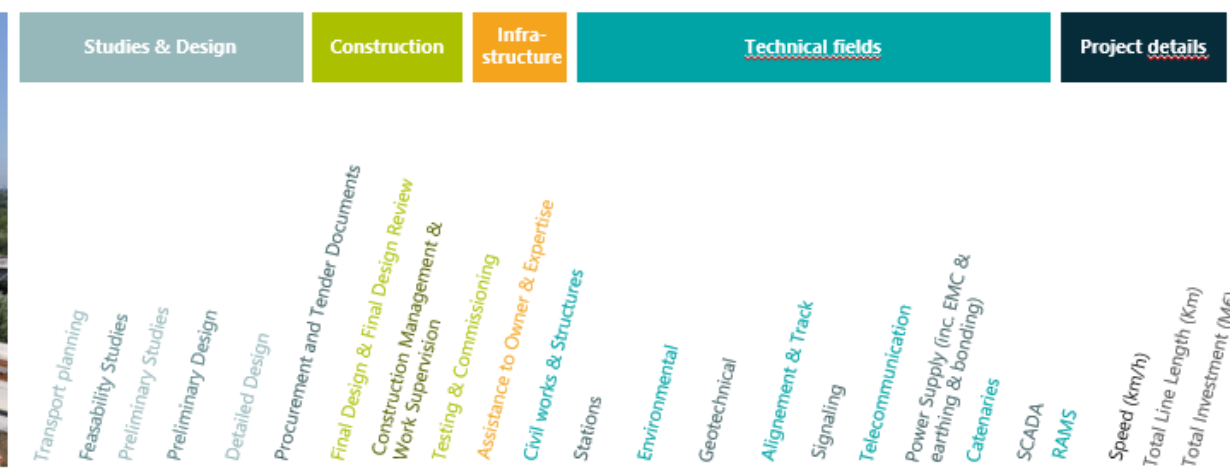


A framework contract for engineering services including Master planning, construction management, port operations, value engineering, cost estimating, quantity surveying and architecture services.

# Egis, a key player for HSR deployment in the world



# HSR project references



	Transport planning	Feasibility Studies	Preliminary Studies	Preliminary Design	Detailed Design	Procurement and Tender Documents	Final Design & Final Design Review	Construction Management & Work Supervision	Testing & Commissioning	Assistance to Owner & Expertise	Civil works & Structures	Stations	Environmental	Geotechnical	Alignment & Track	Signaling	Telecommunication	Power Supply (inc. EMC & earthing & bonding)	Catenaries	SCADA	RAMS	Speed (km/h)	Total Line Length (Km)	Total Investment (M€)		
<b>High Speed Rail (HSR)</b>																										
<b>Africa</b>																										
Morocco – Kenitra – Marrakech HSR	■	■	■	■	■	■						■	■	■	■	■	■	■	■	■	■	■	■	■	320/350	430
Morocco - Kenitra - Tangiers HSR - Civil engineering, Track, catenary and construction depot				■	■	■	■	■	■	■		■	■	■	■	■		■	■						320/350	186
Morocco - Meknès-Fès - doubling optimisation & rectification study	■	■	■	■											■										320/350	-
<b>Asia</b>																										
China - Wuhan-Guangzhou HSR							■	■			■	■		■	■	■	■	■	■						350	182
Thailand - Nakhon Ratchasima-Nong Khai HSR	■	■	■	■								■			■	■	■	■	■	■					250	355
Thailand - Don Mueang–Suvarnabhumi–U HSR					■																					
Republic of Korea - Sudokwon HSR							■	■			■	■			■	■		■	■			■			300	65
<b>Europe</b>																										
Czech Republic - Prague–Dresde		■													■		■	■	■	■	■	■			350	140
Czech Republic - Brno–Ostrava		■													■		■	■	■	■	■	■			350	100
Czech Republic - Běchovice – Poříčany				■							■				■	■		■	■			■			350	25
Czech Republic - Modřice – Šakvice				■							■				■	■		■	■			■			350	30

# HSR project references



	High Speed Rail (HSR)																								
	Transport planning	Feasibility Studies	Preliminary Studies	Preliminary Design	Detailed Design	Procurement and Tender Documents	Final Design & Final Design Review	Construction Management & Work Supervision	Testing & Commissioning	Assistance to Owner & Expertise	Civil works & Structures	Stations	Environmental	Geotechnical	Alignment & Track	Signaling	Telecommunication	Power Supply (inc. EMC & earthing & bonding)	Catenaries	SCADA	RAMS	Speed (km/h)	Total Line Length (Km)	Total Investment (M€)	
France - Poitiers-Limoges HSR	■	■	■								■	■	■	■	■	■	■	■	■	■	■	■	200	125	
France - Sud Europe Atlantique HSR		■	■	■	■	■	■	■	■		■		■	■	■	■		■	■				200/220	303	
France - Nîmes Montpellier HSR		■			■		■	■	■	■	■	■			■	■	■	■	■				200/220	70	
France - Est Européenne HSR - Section B				■	■		■				■		■	■									320	406	
France - Est Européenne HSR - Section E		■	■	■	■		■	■	■	■	■	■			■								320	406	
France - Rhin-Rhône HSR - Eastern Branch Lot B				■	■	■	■	■			■			■	■								320	140	
France - Rhin-Rhône HSR - Eastern Branch systems				■	■	■	■	■			■			■	■	■	■	■					320	140	
France - Bretagne-Pays de la Loire HSR		■	■	■		■					■	■	■	■	■	■							320/350	200	
France - GPSO - Dax and Spanish border Section HSR			■	■							■		■	■	■			■					350	95	
France   Spain - GPSO - Vitoria-Dax International Section HSR											■		■	■	■			■					350	55	
France - GPSO - Bordeaux-Toulouse and Bordeaux-Spain HSR			■	■							■	■	■	■	■			■					350	417	1
France - GPSO - South of Bordeaux HSR Facilities			■	■							■	■	■					■					350	12	
France - Lyon - Torino HSR	■	■		■						■					■								220	140	
France - Paris - Normandie line		■	■								■		■	■	■								250	450	
France - Provence Alpes-Côte d'Azur HSR	■		■								■		■	■	■								200/250	180	

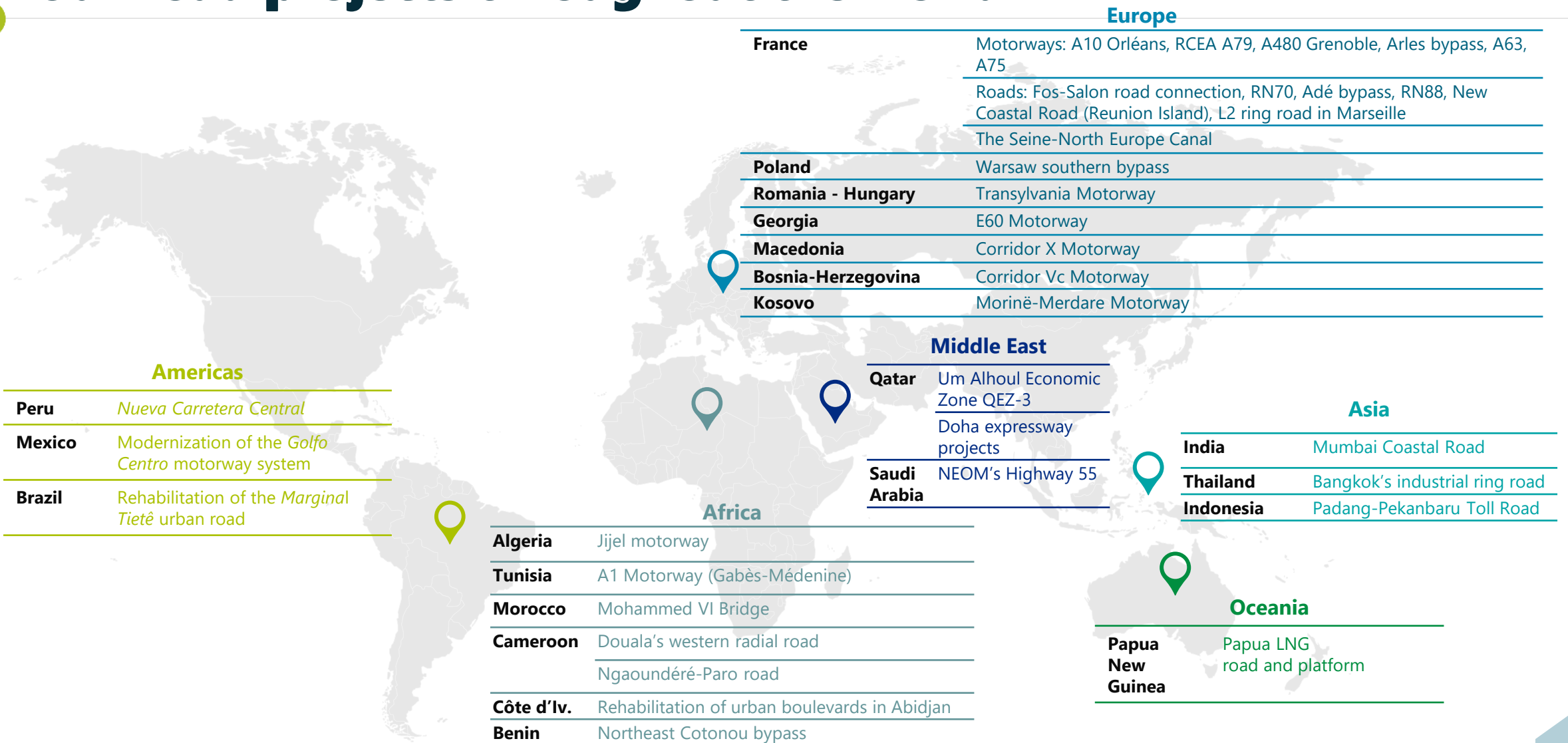


# HSR project references



	High Speed Rail (HSR)																			
Latvia - Riga Central Station, Design & Construction supervision																			250	2.5
Lithuania   Latvia   Estonia – Control Command and Signalling	■																		250	870
Latvia – Vangazi/Salaspils/Misa, Infrastructure design		■																	250	67
Netherlands - HSR Zuid				■															-	147
Poland - E65 line Warsaw - Krakow	■	■	■																200	300
Poland - Solidarity Transport Hub	■																		440	
Spain - Madrid-Lerida HSR				■															310/ 350	180
UK - HS2 Phase 1 - London - Birmingham Railway line		■																	400/ 360	-

# Our road projects throughout the world





[www.egis-group.com](http://www.egis-group.com)

