



HARVEST RISE

TRANSFORMING SUPPORT SUSSEX

Littlehampton, BN16



PERSON-CENTRED SUPPORT



With a focus on the individual, staff will regularly review outcomes, objectives, the support needed, and the individual's wishes. Understanding what is essential to the person underpins our path to achieving planned outcomes, building on strengths-based practice and skills development, which can include support from commissioning partners, external professionals, advocates, friends, and family.

The collaborative approach and expertise among all professionals, family, and friends enable a positive risk-taking approach that allows individuals to meet their needs in a safe and nurturing way.

TRANSFORMING SUPPORT SUSSEX



INTRODUCING: TRANSFORMING SUPPORT SUSSEX

Transforming Support Sussex supports individuals who may have learning disabilities, complex needs, and neurodevelopment, such as autism. We also provide vital support for those navigating mental health challenges and secondary conditions. We provide strengths-based, person-centred support, enabling more independence and community inclusion.

We offer supported living in the heart of the community, focusing on positive risk and actively exploring opportunities and challenges.

TRANSFORMING SUPPORT SUSSEX

Harvest Rise is a welcoming, supported living service located in the charming seaside town of Littlehampton, West Sussex. Set in a peaceful residential area, it is conveniently close to local shops, green spaces, and the coast. Our dedicated support staff provide personalised care tailored to each individual's needs, helping residents live as independently as possible in a safe and supportive environment.

Disclaimer: Accommodation is provided unfurnished but can be furnished if funding is authorised.



TRANSFORMING SUPPORT SUSSEX



PUTTING PEOPLE AT THE HEART OF WHAT WE DO

- Perfect for young adults transitioning to independent living and those seeking a supportive environment for mental well-being.
- We believe in working together. Your voice matters, and we encourage co-production to shape your living experience.
- Enjoy the peace of mind that comes with tenancies managed by a trusted, registered social landlord.
- Littlehampton is a charming coastal town in West Sussex. This location is near local shops and transport links.
- Harvest Rise consists of two 3-bed houses; all bedrooms have private en-suite bedrooms alongside shared kitchen, lounge, and garden spaces.

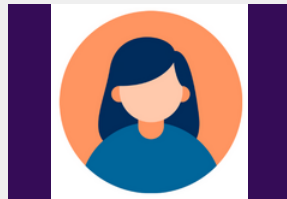
TENANCY AND SUPPORTED LIVING



Based on need and evidence, the majority of the people we support are likely to be entitled to housing benefits. Tenancies are issued by our housing partners, the managers responsible for all housing needs.

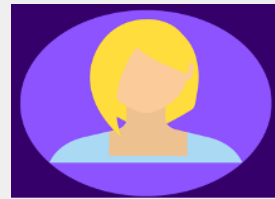
Our focus is on ensuring that the support delivered helps to keep people in a place they can call home. In some cases, we understand individuals may need to step into alternative accommodation provision as they mature.

PROFESSIONALS



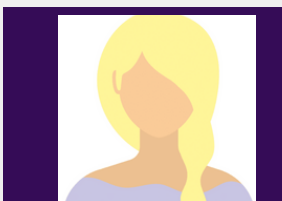
NATALIE SMITH

Regional Director - South



DENISE KING

Registered Manager



CHARLOTTE HOLMES

Consultant Social Worker



MARCUS VAN-HAGEN

Development Director



SABINA QUANSAH

PBS Lead



BUKI SOGA-ODUBAJO

Group Relationship
Manager

TRANSFORMING SUPPORT SUSSEX

AMENITIES NEAR HARVEST RISE



ONLY 10 MINUTES AWAY FROM LITTLEHAMPTON CITY CENTRE



6-minute drive to Angmering Train Station with access to Brighton, Littlehampton and Southampton Central



14-minute drive to Mewsbrook Park and 9 minutes to Arundel Castle



A variety of restaurants, coffee shops and stores within a 10-minute drive



8-minute drive to Sainsbury's Supermarket and ALDI



0.5 miles from bus stop with access to Shoreham-by-the-sea



9-minute drive to Angmering Medical Centre

PERSON WE SUPPORT - THEIR JOURNEY

STEP-BY-STEP

01

Assessment

The desktop assessment is a starting point for any client's adult social care services journey. The aim is to understand the person's situation and create a summary to ascertain if we could meet their needs. It's the first step in creating a tailored care and support plan. If the referrer accepts the service offer, our team will complete a detailed assessment. The process focuses on identifying the individual's care and support needs. It will include the person, important family members and professionals. Once it is completed, we will confirm if the initial indicative service offer reflects the person's assessed needs or if adjustments are required for the referrer's final approval.

02

Person-Centred Offer of Support

This document outlines the level of support and funding required to meet the individual's needs based on the desktop assessment and information provided by the referrer. A formal acceptance from the funder allows us to progress the person-centred support. At this point, we will also collect the necessary information to begin a tenancy application.

03

Transition Planning

Depending on needs, the transition can be planned and agreed. During this time, any agreed adaptations can be implemented, and the person we are supporting is encouraged to visit their new home. This gives us the opportunity to build a successful relationship. If applicable and agreed with the funder, the local team will begin bespoke recruitment and training to meet the person's needs and preferences.

04

Environmental Adaptions

If required, our local team will liaise with our Environmental Adaptions Manager, who can provide a proposal for appropriate adaptions to the person's apartment in conjunction with the Housing Association.

05

Move In

An agreed date will be communicated between all parties. The allocated keyworker and support staff would have prepared to welcome the individual to their new home. All the necessary support plans and risk assessments would be in place alongside an agreed activity plan to reflect the person's needs and aspirations. On the week of moving in, we will introduce the person to a representative of the Housing Association, who will explain the details of the tenancy and provide an accessible welcome pack to welcome the person to their new home.

KEY STRENGTHS



Support Model

Keyworkers are assigned to each person we support, following closely their development and enabling true personalised care for their needs. In some cases, PBS support may be required depending on assessed needs.



Active Support

Our evidence-based model of support ensures that people are supported to participate in every aspect of their daily lives and to take the lead in functional and meaningful activities.



Positive Risk Community Enablement

Positive risk-taking is a way of working with risk that promotes enablement; considered risks can enable individuals and help improve their wellbeing focusing on the outcome, not the risk.



Nurturing Environment

We aim to expand upon successful relationships, locations, and opportunities while proactively mitigating triggers for behaviours of concern to reduce frustration, anxiety, and increase mutual understanding.



Strength-Based Skills

The more independent people become, the less support they need which generates a 'value proposition' for our commissioning partners, aiming to achieve reduction costs in the long-term.



Wellbeing Outcomes

Partnership is at the core of what we do. Together, we focus on improving the experiences and quality of services for the people we support, their families, and support teams.



Technology-Led Systems

We are investing significant resources into system optimisation to ensure that the care and support delivered are visible, transparent and accessible to our teams and stakeholders.



Person Centred Planning

Considering someone's future is an important aspect of our person-centred planning, which aims to build on the person's strengths and skills and help them consider what they want most in life.

GET IN TOUCH WITH US!

referrals@transformingsupport.uk
0800 048 5792
07483 104 502