

# Go wild at Mill Waters



**well read**  
informed communications

This education Pack developed by Kate Dawson at Well Read in consultation with local heritage groups and schools. Particular thanks to Denis Hill, Heritage Consultant for his help providing historic background.

W\_L3TS

at Mill Waters heritage site

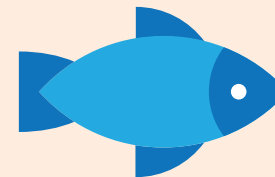
# Food chain image

We eat food to give us energy.

The order in which one species eats another is called a food chain.

Every habitat has a different food chain.

This is a simple food chain at Hermitage Pond, Mill Waters.



Algae

Snail

Damselfly

Rudd

Heron

# Different species eating habits

We can group animals by the types of foods they eat.

Some creatures eat a mixture of plants and animals and some only eat plants or only other animals.



Carnivores, like the lion, eat only meat.

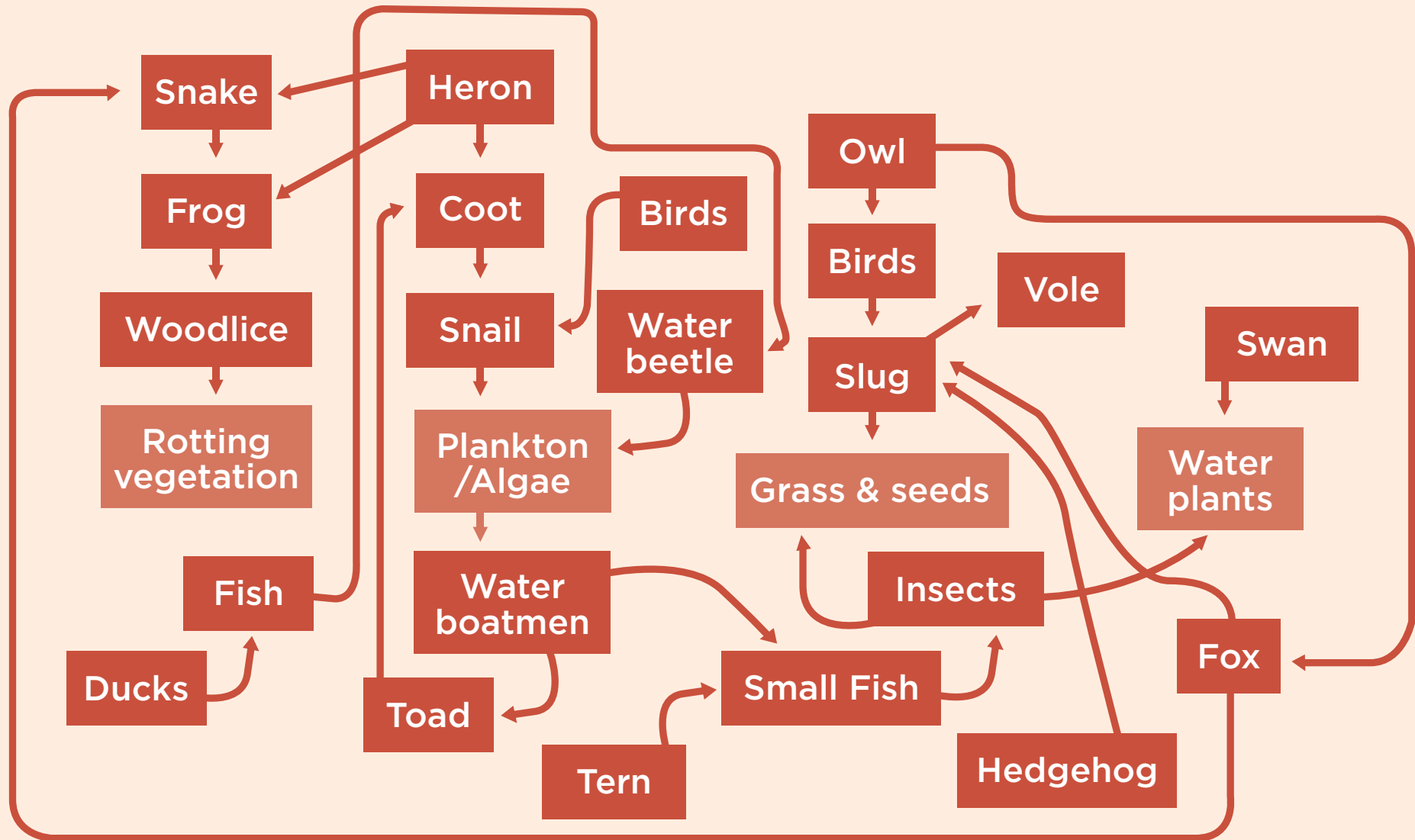


Omnivores, like the swan, eat both meat or fish and plant food.



Herbivores, such as the rabbit, only eat plant food.

# The food web at Mill Waters



# Threats to the food chain



Extremes of weather



Diseases like tuberculosis



Unwelcome predators such as birds of prey and foxes





# Mill Waters – a haven for endangered species



A water vole



A mother tern and her babies

# Birdwatching at Mill Waters



The bearded blue tit



The chiffchaff



# Woodland and hedgerow habitat



The hedgehog



The fox





# Reservoir and reed-bed habitat



The pochard



The water boatman



# Pond habitat



The kingfisher



The dragonfly

