



2021

Jersey Court Service Annual Report



*Supporting the Delivery of Justice
through Professional
Excellence*

TABLE OF CONTENTS

PURPOSE AND ORIGIN OF THE DEPARTMENTS	2
Judicial Greffe	2
Viscount’s Department.....	2
2021 OPERATIONAL AND ADMINISTRATIVE ACTIVITY	2
COVID-19 Pandemic	2
Judicial Greffe	3
Samedi Team	3
Public Registry	3
Family Team	4
Interlocutory Services	4
Probate and Protection Registry	4
Appellate Team.....	5
Intellectual Property Registry	5
Tribunal Service	6
Magistrate’s, Youth and Petty Debts Courts	6
Viscount’s Department.....	7
Enforcement.....	7
Coroner Service.....	7
Insolvency.....	8
Delegate Work.....	8
Regulatory	9
Court Services Team.....	9
Accounts Team	9
STRATEGIC ISSUES.....	10
Law Reform	10
International Dimensions	10
Corporate Social Responsibility	10
Complaints and Compliments.....	10
APPENDIX A – COURT SERVICE FUNCTIONAL ORGANISATION	11
APPENDIX B – JUDICIAL GREFFE STATISTICAL DIGEST	12
APPENDIX C – VISCOUNT’S DEPARTMENT STATISTICAL DIGEST.....	15

PURPOSE AND ORIGIN OF THE DEPARTMENTS

Judicial Greffe

The Judicial Greffe is a Department of the Judiciary responsible for the provision of secretarial, administrative and interlocutory support to the Island's Courts and Tribunals. Associated services are provided to the legal profession and the general public. The Department in its present form was established in 1931 by the "Loi (1931) constituant Le Département du Greffe Judiciaire".

Viscount's Department

The Viscount's Department is the executive arm of the Island's Courts and of the States Assembly. The Department's principal role is to execute orders of the Courts. In addition, the Department fulfils the duties of Coroner, administers *Désastre* (bankruptcy) and other insolvency proceedings, serves legal process and enforces fines and judgment debts. The Department in its present form was established in 1930 by the "Loi (1930) constituant Le Département du Vicomte".

In this report, the Judicial Greffe and Viscount's Department are described collectively as the Court Service.

2021 OPERATIONAL AND ADMINISTRATIVE ACTIVITY

COVID-19 Pandemic

The COVID-19 pandemic had a significant impact on 2021 business activity. A considerable amount of work was devoted to finding alternative ways of delivering our services, keeping users safe, maintaining the resilience of staff, and participating in implementation of measures to support the local economy, all at the expense of making progress with 2021 action plans. With the crisis not yet over, this situation is likely to continue into 2022. However, the accelerated introduction of technology to allow services to be maintained will continue, not least in respect of the Court Digital project, for which the main supplier is due to be appointed shortly.

The Court Service has been flexible and adaptable in ensuring that all essential services continue, so far as possible in the light of restrictions on work and personal environments. As a result of this experience, the new ways of working will continue to be captured, to ensure that we obtain all the benefits and learning points arising from this period of uncertainty.

It is worthy of note that it is undoubtedly the case (as referred to above) that the pandemic has had a distorting effect on activity levels in the Courts, resulting in similar distortion of the data contained in the statistical digest in the appendices to this report.

Judicial Greffe

Samedi Team



The Samedi Team is responsible for providing a full support service to the Royal Court, including attending sittings as a Clerk, issuing and enrolling the Acts of Court in relation to proceedings and providing advice on Court procedure. The Team is also responsible for the registration of professionals, deeds poll, company reinstatements, court of protection orders, guardianships, reciprocal enforcement of judgements, the taxation of costs, considering applications for disbursements in support of legally aided litigants, registering and indexing orders in council, fidéicomis applications and supporting the Liquor Licensing Assembly.

Highlights for 2021

Acts of Court produced: 1,669	Criminal cases indicted: 93	Jury trials: 15 (lasting 55 days)
Liquor Licences granted: 61	Licensing Assemblies: 4 Extraordinary Licensing Assemblies: 2	Court sittings to consider criminal matters: 225
Court Digital project continued with implementation of Caselines for sentencings and interlocutory hearings	Criminal Procedure (Jersey) Law 2018 came fully into effect	COVID-19 measures continued to be deployed, in particular, video links with HMP La Moye and other jurisdictions

Public Registry



The Public Registry is responsible for the management and protection of all land contracts and associated documents enrolled for the purpose of evidencing title to, or charges against, land.

Highlights for 2021

Stamp Duty received: £54,564,000	Value of property transactions registered: £1,547 million	Number of documents registered: 4,798
Availability rate for Public Registry Online (over full year): 99.98%		



Family Team

The Family Team is responsible for providing a comprehensive service to the Royal Court for Family proceedings. These include causes for the termination of marriage (including nullity), dissolution of civil partnership, judicial separation cases, ancillary matters, and applications relating to children. The Family Team also deals with applications relating to legitimacy of children, adoption proceedings, care orders and child abduction. Reciprocal Enforcement of maintenance cases are also dealt with, involving liaison with foreign Courts. In addition, the Family Team deals with applications for the recognition and enforcement of Children Orders made in the UK.

Highlights for 2021

Divorce and judicial separation petitions filed: 186	Decrees Absolute granted: 165	Free standing private children applications filed: 58
Matrimonial Acts issued: 331	Preliminary directions hearings: 62	Case review hearings: 229



Interlocutory Services

The Master of the Royal Court deals with all disputed claims that are not criminal prosecutions and do not involve family or children matters. He is Jersey’s civil procedural Judge and his function is to ensure that parties to a civil dispute take all necessary steps to ensure their cases are ready for trial before the Royal Court. He also deals with claims or defences that have no merit and is the mediator for disputed civil claims in the Petty Debts Court.

Highlights for 2021

Summonses issued: 82	Applications heard: 69	Acts produced: 449
Judgments written: 20	Case reports produced: 0	Cases heard at mediation: 52

Majority of hearings held remotely using appropriate technology

Probate and Protection Registry



The Probate Registry is responsible for examining, validating and granting to lawyers, trust corporations and members of the public the right to recover or receive any part of a Jersey estate. The Protection

Registry is responsible for dealing with Delegations and the registering of Lasting Powers of Attorney (LPAs).

Highlights for 2021

Number of grants issued: **1,636**

Total estates value: **£479,250,700**

Stamp Duty received: **£3,071,000**

Delegate cases at start of year: **342**

Delegate cases at end of year: **321**

LPAs (property/financial) registered: **479**

LPAs (health/welfare) registered: **356**

Appellate Team



The Appellate Team is responsible for the administrative arrangements for the Court of Appeal and the Court of Appeal Judges. This includes arranging the annual sitting rota, listing of all appeals received and preparation of documentation for each sitting. The Appellate Team act as clerk to the judges, attend all sittings, draft Acts of Court and provide procedural advice where required. The Court of Appeal has six scheduled sittings each year, however, the Appellate Team arrange any additional special sittings that are necessary.

Highlights for 2021

Appeals lodged with Court of Appeal: **17**

Superior Number appeals: **2**

Court of Appeal sittings (days): **13**

Special sittings: **1**

Intellectual Property Registry



The Judicial Greffe is responsible for maintaining the Registers of Trade Marks, Patents and Designs. The Registry houses the three registers and provides advice and associated services to industry specialists and members of the public. These are in the course of being transferred to the Jersey Financial Services Commission.

Highlights for 2021

Number of Trade Mark registrations: **70**

Number of Patents (registrations and updates): **49**

Number of Trade Mark updates: **342**

Tribunal Service



The Tribunal Service is responsible for the administration of the Jersey Employment and Discrimination Tribunal, the Social Security Income Support Tribunal, the Social Security Medical Tribunal, the Long Term Incapacity Tribunal, the Mental Health Appeals Tribunal, the Health and Safety Tribunal, Planning Appeals and the Charity Tribunal. The Jersey Employment and Discrimination Tribunal publishes an annual report available at www.tribunal.je.

Highlights for 2021

Claims to Employment and
Discrimination Tribunal: **144**

Planning Appeals: **34**

Mental Health and Capacity
Appeals: **54**

Social Security Appeals: **13**

Magistrate's, Youth and Petty Debts Courts



The Magistrate's, Youth and Petty Debts Courts service a constant daily throughput of Adult Remand Courts, Youth Courts, criminal trials, civil trials and Petty Debts Court hearings. The Magistrate's Court Greffe also provides a weekly mediation session for claims that fall within the Petty Debts Court jurisdiction and ad-hoc sessions for other mediation requirements.

Highlights for 2021

Number of cases dealt with by
Magistrate's Court: **1,863**

Number of cases dealt with by
Youth Court: **72**

New actions before Petty
Debts Court: **2,037**

Value of claims in Petty Debts Court: **£5,763,951**

Viscount's Department

Enforcement



The Enforcement Team carries out enforcement functions, including judgment and fine enforcement, maintenance enforcement, arrest of persons for non-attendance in Court, service of judicial documents, holding and administration of bail money, and enforcement of Court Orders under Proceeds of Crime and Drug Trafficking Laws. The Team also enforces civil matters including civil Injunctions and, if granted, has the power of arrest in order to fulfil this duty. In addition, the Team manages juror selection and juror custodian duties for Assize Trials in the Royal Court.

Highlights for 2021

Number of fines imposed: 616 (value collected £3.6m)	Number of judgments enforced: 595 (value £1.7m)	Number of judicial documents served: 462 (value £46k)
Assets seized under Proceeds of Crime and Civil Asset Recovery: £45m	Confiscated assets amount realised: £281k	

Coroner Service



The role of Coroner is allocated to the Viscount although in most circumstances the Deputy Viscount actually functions as such. Relief Coroners also act from time to time. Coroners investigate sudden, unexpected and unnatural deaths which are reported to them via the Police. If someone dies when in a psychiatric nursing home, mental health establishment or children's home, the death must be reported to the Police, even if the death was expected by a doctor. If someone dies while held in custody by the Police or in prison, immediate notification must be made to the Coroner. The Coroner will authorise post-mortem examinations and hold inquests as needs be. Coroners also deal with enquiries from doctors in cases where the Coroner's authorisation is required for the doctor to issue a Medical Certificate of Fact and Cause of Death. Other duties include issuing permits for the removal of bodies from and into the Island, as well as exhumations. In terms of emergency planning, in a major incident the Coroner has a specific role in the management of mass fatalities and more generally, as evidenced during the COVID-19 emergency, the management of excess death during a pandemic.

Highlights for 2021

Reported deaths: 166 (approx 20% of all registered deaths in Jersey)	Approvals for doctors to issue a certificate of fact and cause of death: 176	Inquests held and completed: 50
Import/export of body permits: 24	42% of all deaths in Jersey in 2021 involved the Viscount as coroner	Coroner Service had a central role in emergency planning and measures taken in management of death matters during COVID-19 pandemic

Insolvency



The Insolvency Team carries out a number of functions in addition to its core activity of administering *en désastre* (bankruptcy) proceedings. In light of the low demand for Debt Remission Orders (DROs), a review of the process and international comparators was conducted. Following consultation with stakeholders, the recommendation to increase the maximum debt level for the grant of a DRO from £20k to £30k was accepted and the law amendment is being progressed. This change takes into account Jersey’s high cost of living and brings Jersey in line with other jurisdictions including England and Wales. The Viscount also obtained permission from the Royal Court to pay more than £1.7 million of third party funds held in connection with historic bankruptcies to the Receiver General. Cross border applications remained constant during the year, highlighting the continuing impact of the pandemic on industry in the UK. The number of *désastre* checks carried out increased by 46%.

Highlights for 2021		
New bankruptcies declared: 0	Cases completed: 0	<i>Désastre</i> checks carried out: 18,172
Personal bankrupts discharged: 2	Number of properties sold: 1	Cross border applications: 4 to Jersey Court, 1 out of Jersey Court

Delegate Work



The pandemic continued to have an impact on direct contact with delegate clients, although case officers arranged visits when opportunities arose during the year. 16 new clients were taken on during the year but 9 clients died, including one only recently appointed. The policy of accepting delegate clients on a “last resort” basis only continued, but the variety and complexity of cases and the demands on staff has increased. Work began on a new strategy for individuals with very limited income and expenditure needs. It is envisaged that appointment would be for the specific purpose of organising receipts and payments, with benefits automatically directed towards settlement of care fees, at which time the appointment would cease as no further financial decisions would be required. This work is ongoing with the first test cases anticipated in the first quarter of 2022.

Highlights for 2021			
Cases at start of year: 31	Cases closed: 9	New cases: 16	Cases at end of year: 38

Regulatory

Under legislation associated with the Capacity and Self-Determination (Jersey) Law 2016, the Viscount has powers to investigate complaints or concerns raised by interested parties against individuals who have been appointed as delegates or as attorneys under Lasting Powers of Attorney. To date, the incidence of complaints has been low (3 in 2020 and 8 in 2021). No complaints have been upheld.



Court Services Team

The Court Services Team organises and manages juries for assize (jury) trials, deals with applications for exemption from court fees and stamp duty, issues convening notices for sittings of the Royal Court and other bodies and provides administrative support for the Coroner team and the Department as a whole.

Highlights for 2021

Assize trial process started: 22	Assize trials completed: 14 (lasting a total of 53 days)	Jury summonses: 1,130
Witness summonses: 90	Certificates of exemption from court fees: 82	Convening notices: 5



Accounts Team

The Accounts Team provides the reception and cash desk for the Viscount's Department, including receipt of fines, judgments, bail receipts and payments, and delegate cash payments. All transactions relating to Viscount's Department third party assets (delegate funds, maintenance, insolvency, compensation, criminal injuries compensation, proceeds of crime and drug trafficking offences) are also undertaken by the Accounts Team. Payment of all invoices and receipt of all income, for the Court Service as a whole, is undertaken on a daily basis, along with management of budgets and regular provision of financial and accounting information to the Treasury.

Highlights for 2021

Total Stamp Duty collected: £57,635,000	Court and Case costs net expenditure: £3,392,700	Underspend of Court and Case costs, transferred to other departments: £149,900
Judicial Greffe grant to Family Mediation Jersey: £72,300	Viscount's Department over- achieved business as usual income: £0.8m (including a corporate fine of £0.6m under Proceeds of Crime Law)	Judicial Greffe underachieved business as usual income: £0.1m

STRATEGIC ISSUES

Law Reform

During the period, the Court Service identified and commented on changes required in primary and subordinate legislation affecting the operation of the Courts or the core services provided by the Court Service. In particular, work on or review of the following items of legislation was completed.

- Companies (Amendment No 8) (Jersey) Regulations 202-.
- Consumer Lending Legislation.
- Criminal Procedure (Jersey) Law 2018.
- Criminal Procedure Rules (Jersey) 2021.
- Debt Remission (Individuals) (Jersey) Law 2016.
- Probate (Jersey) Law 1998.
- Stamp Duties and Fees (Jersey) Law 1998.

International Dimensions

The Court Service has always represented the Island in a number of international fora (through participation in and hosting of conferences, attendance at regional meetings, and through secretariat membership) and continued to do so in 2021, although several of these events were held online/remotely. These included:

- International Association of Insolvency Regulators.
- Free Access to Law Movement.
- Coroners' Society of England and Wales.
- Commonwealth Magistrates' and Judges' Association.
- Criminal Assets Management and Enforcement Regulators Association.
- United Nations Office on Drugs and Crime.
- INSOL (International Association of Restructuring, Insolvency & Bankruptcy Professionals).

Corporate Social Responsibility

During the period, the Court Service continued to maintain its Corporate Social Responsibility policy. The Court Service contributed to a number of charities throughout the year by various fund raising efforts, including dress-down days, sponsored walks, and collections. Organisations that have benefited include Breakthrough Breast Cancer, Jersey Hospice, Headway, Comic Relief and Cancer Relief.

Complaints and Compliments

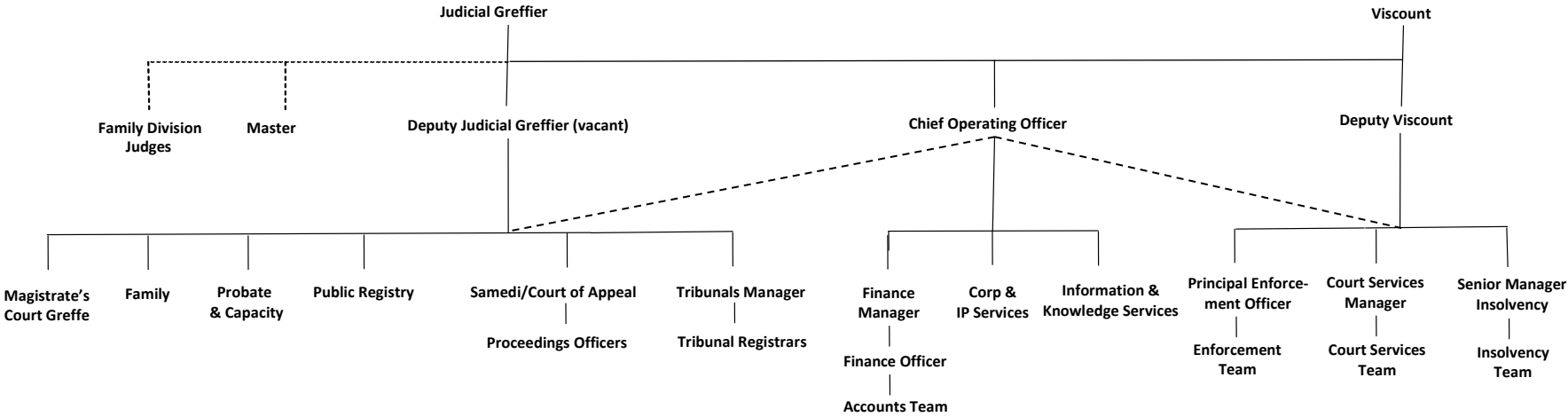
During the period, the Court Service continued to maintain a register of complaints and compliments. In 2021, the Court Service received 3 formal complaints (2020: 5) and 14 formal compliments (2020: 12).

Elaine Millar
Viscount

Adam Clarke
Judicial Greffier

31 March 2022

APPENDIX A – COURT SERVICE FUNCTIONAL ORGANISATION



APPENDIX B – JUDICIAL GREFFE STATISTICAL DIGEST

	2020	2021	% change 2020 to 2021
Samedi Section			
Actions before the Royal Court			
New Actions	484	241	-50%
Placed on the Pending List	43	60	40%
Acts of Court issued	1,688	1,669	-1%
Number of Court Sitzings	637	722	13%
Orders in Council registered	13	23	77%
Jury trials completed	10	15	50%
Dégrévement Hearings	2	0	-100%
Applications for Remise de Biens	1	0	-100%
Consent Orders	245	234	-4%
Actions before the Greffier Substitute			
Registration of professionals	26	38	46%
Registration of Deeds poll	62	110	77%
Registration of Court of Protection Orders	58	57	-2%
Company reinstatements	41	27	-34%
Inquests	46	50	9%
Guardianships	1	2	100%
Magistrate's Court Appeals			
Lodged	13	9	-31%
Heard	6	5	-17%
Liquor Licences			
Licences Granted	55	61	11%
Ex parte applications (vary/extend licence)	12	4	-67%
Managers Registered	97	64	-34%
Taxation of Costs			
Civil bills of costs	22	15	-32%
Criminal bills of costs	23	33	43%
Legal Aid Disbursements			
Occasions granted (invoices paid)	871	857	-2%
Legally aided litigants	182	216	19%
Expenditure	£1,897,269	£1,658,864	-13%
Public Registry			
Documents Registered/Cancelled			
Contracts	2,094	2,516	20%
Procurations	2,421	2,932	21%
Obligations	1,860	2,282	23%
Cancellations	1,632	1,981	21%
Stamp Duty received	£31,835,000	£54,564,000	71%
Contracts & Wills	£28,773,000	£50,344,000	75%
Judicial Hypothecs	£3,062,000	£4,220,000	38%

	2020	2021	% change 2020 to 2021
Documents registered in the Public Registry	3,954	4,798	21%
Value of property transactions registered *	£1,043,000,000	£1,547,000,000	48%

* Excluding value of properties transferred by Deeds of Gift or bequeathed in Wills of Immovable Estate

Probate Section

Number of Grants issued	1,392	1,636	18%
Total estates value	£1,175,399,400	£479,250,700	-59%
Number of Delegates formed	53	95	79%
LPAs registered	834	835	0%
Stamp Duty received	£2,426,900	£3,071,000	27%

Family Section

Free standing private children applications filed	45	58	29%
Preliminary directions hearing	105	62	-41%
Case review hearing	328	229	-30%
Summonses heard (half day or more)	31	56	81%
Family/children Acts issued	346	289	-16%
Adoptions (2 Orders per child)	3	6	100%
Nisi Acts issued	194	167	-14%
Matrimonial Acts issued	460	331	-28%
Reciprocal Orders	2	1	-50%
Parental Responsibility Agreements	29	26	-10%
Decrees Absolute issued	169	165	-2%
Petitions filed	175	186	6%
Hearings vacated/settled	173	135	-22%

Interlocutory Services

Summonses issued	83	82	-1%
Applications heard	73	69	-5%
Judgments	35	20	-43%
Acts issued (including Consent Order)	421	449	7%
Cases heard at mediation	74	52	-30%
Case reports produced	2	0	-100%

Appellate Section

Appeals lodged with Court of Appeal	25	17	-32%
Superior Number Appeals	2	2	0%
Court of Appeal sittings (days)	14	13	-7%
Number of Unreported Judgments (published)	316	325	3%
Number of File and party Judgments (unpublished)	95	138	45%
Transcripts of evidence - transcripts produced	82	71	-13%

Intellectual Property Registry

Trade Marks Registrations	46	70	52%
Patents (Registrations & Updates)	24	49	104%
Designs (Registrations & Updates)	0	0	0%
Trade Marks Updates	247	342	38%

Tribunal Service

JEDT Applications: Employment	156	131	-16%
JEDT Applications: Discrimination	59	13	-78%

	2020	2021	% change 2020 to 2021
Case management meetings	127	96	-24%
Interim hearings	22	19	-14%
Full hearings	36	35	-3%
Pending at year end	51	20	-61%
Income Support Medical Appeal Hearings	0	0	-
Social Security Medical Appeal Hearings	9	3	-67%
Social Security Appeal Hearings	6	0	-100%
Mental Health Appeal Applications	26	40	54%
Mental Health Appeal Hearings	13	14	8%
Capacity Reviews	7	14	100%
Capacity Hearings	5	10	100%
Health and Safety Applications	1	0	-100%
Planning Appeals	33	34	3%
Total number of cases received	281	232	17%
Magistrate's Court			
Non parking cases completed	547	609	11%
Cases committed to Royal Court	75	90	20%
Parking cases completed	218	258	18%
Total completed cases	840	957	14%
Non parking persons			
Non parking persons	508	600	18%
Persons committed to Royal Court	73	90	23%
Parking persons	105	225	114%
Total persons	686	915	33%
Non parking arrest			
Non parking arrest	80	47	-41%
Parking arrest	220	388	76%
Total arrests	300	435	45%
Total remands			
Total remands	751	678	-10%
Total volume of case work			
Total volume of case work	1,900	2,307	21%
Youth Court			
Total cases	51	72	41%
Total Youths	43	66	53%
Royal Court committals	4	3	-25%
Remands	67	75	12%
Arrests	0	0	-
Petty Debts Court			
Actions	2,217	2,037	-8%
New actions	1,468	1,373	-6%
Judgments	1,045	831	-20%

	2020	2021	% change 2020 to 2021
Taxation of Costs			
Criminal Bills of Costs	26	20	-23%
Mediation Sessions			
Sessions conducted before the Master	99	74	-25%
Contested cases			
Direct to mediation	99	74	-25%
Direct to pleadings	0	0	0%
Cases settled	81	55	-32%
Trials	0	0	0%
Tenancy	51	0	-100%
Family	2	0	-100%
Total Value	£7,771,620	£5,638,621	-27%
Stamp Duty	£97,647	£51,115	-48%

APPENDIX C – VISCOUNT’S DEPARTMENT STATISTICAL DIGEST

	2020	2021	% change 2020 to 2021
Enforcement			
Fines imposed and amounts collected			
Number imposed	436	616	41%
Value of fines imposed	£1,244,088	£3,622,037	191%
Amount collected	£2,008,988	£1,561,474	-22%
Receipt of bail moneys			
Persons bailed	91	188	107%
Money received	£13,020	£17,110	31%
Arrest Orders			
Number of Arrest Orders	5,786	6,015	4%
Service of Process			
Service of Judicial documents	380	462	22%
Value of fees collected	£25,220	£46,501	84%
Costs			
Number imposed	19	29	53%
Value imposed	£49,100	£106,200	116%
Compensation Orders			
Number imposed	65	80	23%
Value imposed	£284,053	£85,960	-70%

	2020	2021	% change 2020 to 2021
Judgments received and processed			
Number lodged	503	595	18%
Total amount collected	£303,524	£389,418	28%
Evictions			
Number of evictions carried out	8	17	113%
Maintenance Orders under enforcement			
Number of Maintenance Orders under enforcement	63	69	10%
Proceeds of Crime			
Non-Saisie Confiscation Orders			
Local	20	23	15%
External	0	0	-
Total	20	23	15%
Approximate value of assets arrested	£10,272	£63,257	516%
Proceeds of Crime - Saisies Judiciaires			
New cases (including Drug Trafficking)			
Local	1	4	300%
External	0	1	-
Total	1	5	400%
Approximate value of assets arrested	£212,119	£913,263	331%
Confiscations (concluded cases): Proceeds of Crime			
Number	3	4	33%
Value (net)	£959,137	£127,103	-87%
Value (net)	\$0	\$0	-
Cases discharged	1	1	0%
Cases carried forward into following year			
Local	9	9	0%
External	11	10	-9%
Total	20	19	-5%
Approximate asset value	£32,688,991	£30,400,102	-7%
Civil Asset Recovery			
New cases			
Local	0	0	-
External	0	0	-
Total	0	0	-
Approximate value of assets arrested	£0	£0	-
Confiscations (concluded cases): Civil Asset Recovery			
Number	0	0	-
Value (net)	£0	£0	-
Cases discharged	0	0	-
Cases carried forward into following year			
Local	0	0	-

	2020	2021	% change 2020 to 2021
External	1	1	0%
Total	1	1	0%
Approximate asset value	£15,484,303	£14,858,113	-4%
Civil Proceedings Forfeiture of Assets			
New cases			
Local	1	1	0%
External	0	0	-
Total	1	1	0%
Approximate value of assets arrested	£0	£94,552	-
Assizes			
Trial process started	23	22	-4%
Trials not completed	18	7	-61%
Trials completed	7	14	100%
Days	36	53	47%
Juror exemptions	492	453	-8%
Jury summonses	1,057	1,130	7%
Witnesses	83	90	8%
Jurors given financial assistance	0	0	-
Coroner			
Reported Deaths			
Inquest cases	67	48	-28%
Cleared after autopsy	37	50	35%
Cleared by doctor's cert etc	58	68	17%
	162	166	2%
Deaths reported as % of all registered deaths*	23%	20%	-13%
Unreported Deaths			
Approvals for doctor to issue cert of fact and cause	298 ⁺	176	-41%
Permits Issued			
Import/export of bodies	17	24	41%
Exhumation	0	2	-
Inquests Concluded**			
Accident/misadventure	14	16	14%
Drugs/alcohol	7	3	-57%
Industrial disease	0	0	-
Lawful/unlawful killing	1	0	-100%
Natural causes	18	12	-33%
Open	3	3	0%
Road traffic collision	0	0	-
Stillbirth	0	0	-
Suicide	2	14	600%
Narrative	1	2	100%
Total number of inquests completed	46	50	9%
Inquest cases carried forward to following year	40	33	-18%

* Based on a total of 827 deaths registered in Jersey in 2021 (although there were 814 actual deaths in Jersey in 2021). Source: "Births, Deaths, Stillbirths, Marriages and Civil Partnerships registered in the 12 parishes of the Island of Jersey for the year 2021". R21/2022.

** The finding of an inquest in Jersey is given in a narrative form. However, for statistical purposes for the Annual Report, these findings are re-classified into the short-form conclusions used in England and Wales. The table above has been modified for this Annual Report to include all of the short-form conclusions in England and Wales which were revised by the coming into force of the Coroners (Inquest) Rules 2013.

† During the COVID-19 pandemic, for approximately 7 months, all deaths in the community were referred to the Coroner Service for authorisation.

	2020	2021	% change 2020 to 2021
Désastre			
Declared	3	0	-100%
Completed	3	0	-100%
Discharges of personal bankrupts			
Granted	1	2	100%
Extended	1	0	-100%
Sales of immovable property			
Number of properties	2	1	-50%
Value	£1,906,000	£2,000,000	5%
Debt Remission Orders			
Number of applications received	0	0	-
Orders granted	0	0	-
Désastre checks			
Checks conducted	12,408	18,172	46%
Charges invoiced	£227,575	£359,607	58%
Remise de Biens applications			
Applications received	0	0	-
Applications granted	0	0	-
Cross border applications			
Applications granted	4	4	0%
Applications pending	1	0	-100%
Request for assistance out of Jersey Court			
Applications granted	3	1	-67%
Delegate clients			
Appointments	6	16	167%
Cases closed	6	9	50%
Under administration at year end	31	38	23%
Vues de Vicomte			
In progress	1	0	-100%
Completed	0	1	-
Other functions of the Viscount			
Attend sittings of the States	28	20	-29%
Bear Royal Mace and Seal on official occasions	7	11	57%



The Departments of the Jersey Court Service:

Judicial Greffe, Royal Court House, St Helier, Jersey JE1 1JG
Telephone: +44 (0) 1534 441300 Facsimile: +44 (0) 1534 441399
Email: jgreffe@courts.je

Viscount's Department, Morier House, St Helier, Jersey JE1 1DD
Telephone: +44 (0) 1534 441400 Facsimile: +44 (0) 1534 441499
Email: viscount@courts.je

Websites: www.gov.je/judicialgreffe, www.gov.je/viscount, www.jerseylaw.je