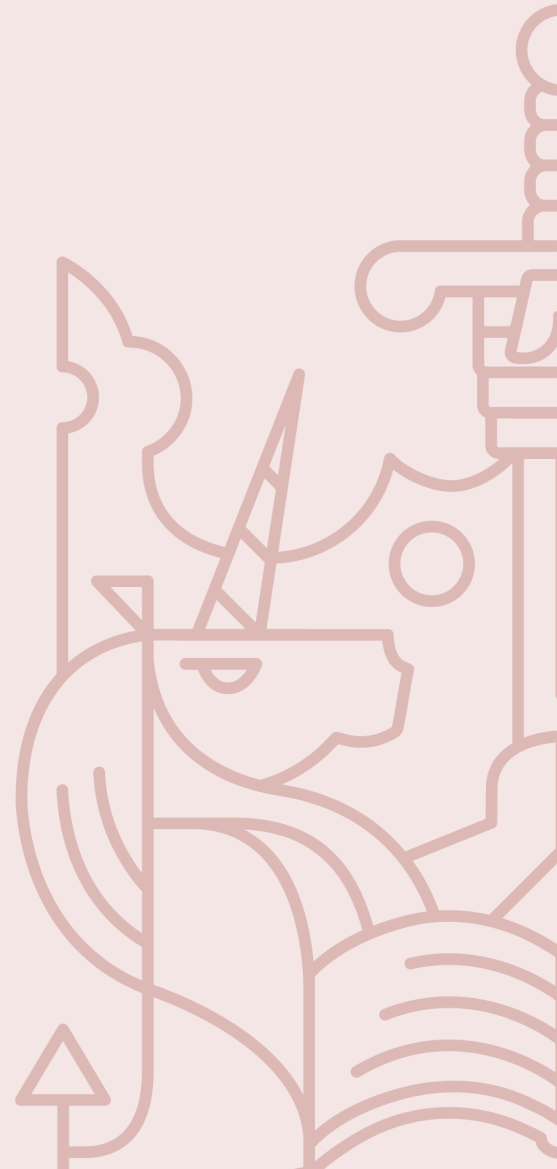




Personal
Finance
Society
Standards. Professionalism. Trust.

March 2025

CII Level 4 Certificate in Paraplanning Qualification specification



Thank you for considering study with the CII. This specification summarises the purpose and the content of this qualification to help you decide whether it meets your learning needs.

The qualifications section of the CII website, unit syllabus documents and CII policies provide further detail on the features summarised here.

Qualification overview

The CII Level 4 Certificate in Paraplanning meets the specific needs of paraplanners by offering a dedicated qualification route that develops paraplanning skills and expertise, and imparts advanced technical knowledge in a number of key advisory areas.

Who is this qualification for?

This qualification is particularly appropriate for:

- Paraplanners looking to further their knowledge and sharpen their skills.
- New industry entrants, graduates or otherwise, aspiring to become paraplanners or looking for an entry route into financial planning.

Benefits for individuals and employers

The Certificate supports existing and aspiring paraplanners to gain greater understanding of the importance of their role and the technical aspects of paraplanning.

Summary of content

The Certificate involves completion of four compulsory units that cover the market and regulatory context, key principles of investment, personal taxation and the practice of paraplanning.

Entry and professional completion requirements

Entry requirements

There are no entry requirements for this qualification.

Additional completion requirements

There are no additional completion requirements for this qualification.

Qualification structure

Regulatory units

You will need to complete one of the following units.

(R01) Financial services, regulation and ethics

20 CII Credits

(CF1) UK Financial services, regulation and ethics

15 CII Credits

Other compulsory units

You will need to complete the following three units.

(R02) Investment principles and risk

20 CII Credits

(R03) Personal taxation

10 CII Credits

(J09) Paraplanning

30 CII Credits

Learning and assessment

Learning materials provided

For units in this qualification, students typically have access to the following materials as part of their enrolment:

- Study text (digital only or printed and digital) with online updates
- Online support including exam guide via RevisionMate

Additional or different resources may be available for some units.

Study time

Specific study time guidelines are provided for each unit on its webpage and in the CII qualifications brochure.

The notional Ofqual 'Total Qualification Time' for this qualification is 270 hours*. This represents the time a student might typically take to complete the qualification.

*'Total Qualification Time' is a term that awarding organisations are required by Ofqual (the qualifications regulator in England) to use to describe the size of qualifications.

Assessment format

Each unit, with the exception of J09 (Paraplanning), is assessed by a single multiple-choice on screen exam, these exams are available weekly at UK and non-UK online exam centres or via remote invigilation.

J09 is assessed by three written coursework assignments. The qualification award will be graded pass/fail.

To be awarded this qualification, each unit must be passed. The nominal pass mark for each unit within this qualification can be found on the relevant unit page. Please note, pass marks may vary from examination to examination to take account of the relative difficulty of examinations presented to candidates, ensuring that the pass standard remains constant.

We regularly update our qualifications, units and assessments to maintain industry relevance and assessment standards.

Further information on learning and assessment for each unit

Please ensure that you refer to the individual unit syllabus for unit-specific details:

- learning outcomes and assessment criteria
- further reading and resources
- important notes, such as the tax and legislative position that will be assessed

This is available on each unit webpage, accessible from the qualification webpage:

www.cii.co.uk/learning/qualifications/certificate-in-paraplanning-qualification

Please also select your unit from the webpage to find out about any unit updates.

Important assessment policies

Details of terms and conditions which apply to candidates entering for assessments with the CII are set out on the CII website. By entering any assessment with the CII, you agree to be bound by these terms and conditions and our [assessment policies](#).

Fair access to our qualifications

The CII acts at all times to ensure that no unfair barriers apply to those seeking to gain the qualifications it offers. If, due to disability or illness, you may require adjustments in order to access an assessment, please read the [Qualifications accessibility and special circumstances policy and guidance](#) and contact the CII Customer Service team as soon as possible to discuss how we can meet your needs.

Qualification Fees

We are required by our regulators to publish a standardised set of qualification fees and these are set out below. The best way for you to calculate the cost of completing a qualification is by looking at the unit shop pages for the units you are planning to take.

The terms, 'Standard Qualification Fee', 'Package fee' and 'Associated Learner Fees' are defined by our regulators, Ofqual, CCEA and Qualifications Wales, to create consistency between UK-based awarding organisations. It is a regulatory requirement to illustrate our pricing in this way. The total price paid will depend upon specific pathway chosen, membership status and local currency. Further pricing information by unit and component relevant to your specific pathway remains available on your qualification webpage. The table below describes what each fee indicates.

Fee	Description
Standard Qualification Fee	The standard total fees payable for the assessment elements of the core qualification throughout a typical course of study.
Package Fee	Where applicable, the total of the fees payable for mandatory learning materials elements of the core qualification throughout a typical course of study.
Associated Learner Fees	Additional fees for optional services payable: <ul style="list-style-type: none"> • at the learner's discretion. • in specific circumstances only; or, • for additional study requirements prior to completing this qualification.

Please note these fees are based on non-CII members taking the qualification in the UK, following a typical route to completion, using digital only options where available. Costs may vary for those residing outside the UK and depending on the route to completion. Substantial discounts are available to members and are detailed on the individual unit shop pages.

Standard Qualification Fee	£970.00
Package Fee	£237.00
Associated Learner Fees	
Annual	
Non-Mandatory Annual Membership (per annum) (Assumes entry level membership)	£84.00
One off	
Digital enrolment	£627.00
Digital and printed enrolment	£746.00
Digital only enrolment plus	£786.00
Digital and printed enrolment plus	£879.00
Key facts booklet (Printed and Digital)	£135.00
Key facts booklet (Digital Only)	£114.00

Knowledge checker	£135.00
E-learn	£195.00
Audio revision	£183.00
Study text update (Digital only)	£210.00
Study text update (Printed and Digital)	£252.00

For post results services prices, please visit the [Post results services webpage](#).

Chartered Insurance Institute


3rd Floor, 20 Fenchurch Street,

London, EC3M 3BY

tel: +44 (0)20 8989 8464

customer.serv@cii.co.uk

cii.co.uk

 Chartered Insurance Institute

 @CIIGroup

© The Chartered Insurance Institute 2025

Ref: QSCP202301