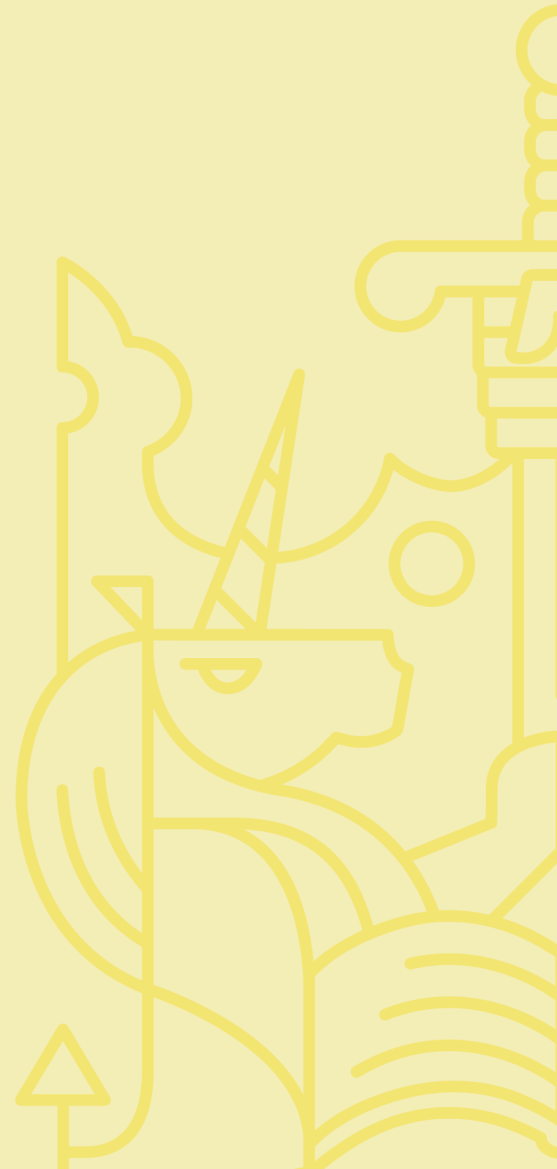


Chartered
Insurance
Institute
Standards. Professionalism. Trust.

March 2026

CII Level 2 Award in Home Insurance Qualification specification



Thank you for considering study with the CII. This specification summarises the purpose and the content of this qualification to help you decide whether it meets your learning needs.

The qualifications section of the CII website, unit syllabus documents and CII policies provide further detail on the features summarised here.

Qualification overview

The **CII Level 2 Award in Home Insurance** is suitable for entry-level staff, anyone working in customer facing roles and those in support roles seeking to build a better understanding of Home Insurance.

IMPORTANT NOTICE: The CII Level 2 Award in Home Insurance is being withdrawn. The last opportunity to enrol for unit PL3 will be 30 November 2026.

Who is this qualification for?

This qualification is particularly appropriate for anyone wishing to gain a broad understanding of Home Insurance.

Benefits for individuals and employers

By completing this qualification, you will be able to understand home insurance products and how to support home insurance customers. This will assist you in understanding your role and your workplace and prepare you to progress to more detailed study of insurance concepts, market, processes and products.

The Award in Home Insurance can play an important part in helping employers to support your development and ensure that their teams have the right level of technical awareness and understanding.

Summary of content

The qualification consists of one core unit that develops an understanding of key insurance topics relating to home insurance, including;

- the need for cover and its benefits;
- insurance legal principles and duties;
- product features;
- how cover is arranged and provided; and
- the principles of delivering good customer service.

Entry and professional completion requirements

Entry requirements

There are no entry requirements for this qualification.

Additional completion requirements

There are no additional completion requirements for this qualification.

Qualification structure

Single compulsory unit

You will need to complete the following unit.

IMPORTANT NOTICE: The CII Level 2 Award in Home Insurance is being withdrawn. The last opportunity to enrol for unit PL3 will be 30 November 2026.

(PL3) Introduction
to home
insurance

0 CII credits *

Learning and assessment

Learning materials provided

For units in this qualification, students typically have access to the following materials as part of their enrolment or for an additional price:

- Interactive digital course
- Study text (digital only or printed and digital) with online updates
- Assessment entry
- Online support including exam guide via RevisionMate

Study time

Specific study time guidelines are provided for each unit on its webpage and in the CII qualifications brochure.

The notional Ofqual 'Total Qualification Time' for this qualification is 20 hours[†]. This represents the time a student might typically take to complete the qualification.

*Completion of three of the four Personal Lines Awards (Award in Pet Insurance, Award in Travel Insurance, Award in Home Insurance, Award in Motor Insurance) contributes 15 CII credits towards the completion requirements of the CII Level 3 Certificate in Insurance.

[†]'Total Qualification Time' is a term that awarding organisations are required by Ofqual (the qualifications regulator in England) to use to describe the size of qualifications.

Assessment format

Each unit is assessed by a single multiple-choice on screen exam, exams are available weekly at UK and non-UK online exam centres or via remote invigilation. The qualification award will be graded pass/fail.

The nominal pass mark for this qualification is 70%. Please note, pass marks may vary from examination to examination to take account of the relative difficulty of examinations presented to candidates, ensuring that the pass standard remains constant.

We regularly update our qualifications, units and assessments to maintain industry relevance and assessment standards.

Further information on learning and assessment for each unit

Please ensure that you refer to the individual unit syllabus for unit-specific details:

- learning outcomes and assessment criteria
- further reading and resources
- important notes, such as the legislative position that will be assessed

This is available on each unit webpage, accessible from the qualification webpage:

www.cii.co.uk/learning/qualifications/award-in-home-insurance-qualification

Please also select your unit from the webpage to find out about any unit updates.

Important assessment policies

Details of terms and conditions which apply to candidates entering for assessments with the CII are set out on the CII website. By entering any assessment with the CII, you agree to be bound by these terms and conditions and our [assessment policies](#).

Fair access to our qualifications

The CII acts at all times to ensure that no unfair barriers apply to those seeking to gain the qualifications it offers. If, due to disability or illness, you may require adjustments in order to access an assessment, please read the [Qualifications accessibility and special circumstances policy and guidance](#) and contact the CII Customer Service team as soon as possible to discuss how we can meet your needs.

Qualification Fees

We are required by our regulators to publish a standardised set of qualification fees and these are set out below. The best way for you to calculate the cost of completing a qualification is by looking at the unit shop pages for the units you are planning to take.

The terms, 'Standard Qualification Fee', 'Package fee' and 'Associated Learner Fees' are defined by our regulators, Ofqual, CCEA and Qualifications Wales, to create consistency between UK-based awarding organisations. It is a regulatory requirement to illustrate our pricing in this way. The total price paid will depend upon specific pathway chosen, membership status and local currency. Further pricing information by unit and component relevant to your specific pathway remains available on your qualification webpage. The table below describes what each fee indicates.

Fee	Description
Standard Qualification Fee	The standard total fees payable for the assessment elements of the core qualification throughout a typical course of study.
Package Fee	Where applicable, the total of the fees payable for mandatory learning materials elements of the core qualification throughout a typical course of study.
Associated Learner Fees	Additional fees for optional services payable: <ul style="list-style-type: none"> • at the learner's discretion. • in specific circumstances only; or, • for additional study requirements prior to completing this qualification.

Please note these fees are based on non-CII members taking the qualification in the UK, following a typical route to completion, using digital only options where available. Costs may vary for those residing outside the UK and depending on the route to completion. Substantial discounts are available to members and are detailed on the individual unit shop pages.

Standard Qualification Fee	£79.00
Package Fee	£115.00
Associated Learner Fees	
Annual	
Non-Mandatory Annual Membership (per annum) (Assumes entry level membership)	£93.00
One off	
Digital and printed enrolment	£140.00
Knowledge checker	£46.00


For post results services prices, please visit the [Post results services webpage](#).


Chartered Insurance Institute
1st Floor, 30 Old Broad Street
London EC2N 1HT

tel: +44 (0)20 8989 8464

customer.serv@cii.co.uk

cii.co.uk

 Chartered Insurance Institute

 @CIIGroup

© The Chartered Insurance Institute 2026

Ref: QSPL3202301