

CURRAN
SAN FRANCISCO, CA

TECHNICAL INFORMATION

CONTENTS:

CURRAN/BSFpage 3
LOAD-IN/OUT... page 4
STAGE FEATURES & DIMENSIONS..... page 5 & 6
RIGGINGpage 7
SOFTGOODSpage 8
ORCHESTRA PITpage 8
ELECTRICSpage 9 & 10
PROJECTION PACKAGEpage 10
PYROTECHNICS / OPEN FLAME / SPECIAL EFFECTSpage 11
GENERAL FIRE MARSHALL INFORMATION..... page 11
AUDIOpage 12 & 13
WARDROBEpage 14
PROPSpage 14
DRESSING ROOMS & OFFICESpage 15
INTERNET ACCESS/ BUILDING PHONES page 16
BUILDING ACCESS..... page 17
ADDITIONAL BUILDING INFORMATIONpage 18
VISITOR AND TRUCK PARKING.....page 19
VISITOR INFO..... page 20 & 21

APPENDICES:

LINESET SCHEDULEappendix A
STAGE DETAIL/ RIGGING POINTSappendix B
FRONT ELEVATION.....appendix C
DRESSING ROOMSappendix D
REP LIGHT PLOTappendix E
REP SOUND PIOTappendix F
SEATING CHARTappendix G

C
U
R
R
A
N

CURRAN

DISCLAIMER

This packet is intended for touring and prospective productions companies, creatives and crew.

All technical information should be discussed in advance with the ATG Director of Production and may require a site survey for verification. No assumptions should be made regarding accessibility, stage traps, structural beams, or other obstructions. It is the sole responsibility of the production to verify all measurements.

Lists of local resources and vendors included are not affiliated with the Curran in any way and their inclusion does not represent a recommendation from the Curran. Locations, hours and services should be confirmed by the production, as this information may have changed.

This technical information packet was last updated on July 16, 2024. Please contact Kim Fisk, Director of Production, Broadway SF, at (415) 551-2054 or kimfisk@atgentertainment.us if you find any outdated or incorrect information.

CURRAN

CURRAN

445 Geary Street
San Francisco, CA 64102
www.sfcurran.com

MISSION AND HISTORY:

Built in 1922, the Curran has housed some of the biggest productions in theater history and has maintained a reputation over the course of its life as one of the premier live entertainment venues in North America. Now, a century after it welcomed its first Bay Area audiences, the Curran has undergone a major restoration and renovation. Curated by eight-time Tony Award-winner Carole Shorenstein Hays, the Curran reopened in January 2017.

CONTACTS:

Jamie Budgett, ATG/BSF 646-829-8734
General Manager
jamiebudgett@atgentertainment.us

Kim Fisk, ATG/BSF 415-551-2054
Director of Production
kimfisk@atgentertainment.us

Rachel Caproni, ATG/BSF 415-551-2009
Production Manager
rachelcaproni@atgentertainment.us

Joshua Hayes, ATG/BSF 937-707-9272
House Manager, Deputy General Manager
joshuahayes@atgentertainment.us

Box Office 415-358-1220

ADMINISTRATIVE OFFICES:

ATG Entertainment
Broadway SF
1182 Market St., Suite 200
San Francisco, CA 94102
415-551-2030

CURRAN

LOAD IN/LOAD OUT

The Curran Theater does not have a dedicated dock. Trucks unload at street level in parking lane on Geary Street. The Theater has two loading doors, accessible by alleyways on either side of the theater building.

TRUCK PARKING/DOCK:

No trucks can be on Geary Street between 4pm-6pm weekdays.
2 trucks can be parked and unloaded/loaded at a time. Street level load in parking lane on Geary Street. Please coordinate with PM about limitations and extra space if needed.
No additional staging/truck parking/trailer storage available onsite. Traveling company should make arrangements with area truck lots and marshaling areas. See PARKING on page 19.
No forklift onsite. Local rental arrangements can be made through venue when required.

SR STAGE LOADING DOOR (MAIN):

100' push from street. Door opens directly to stage.
9'-11" high x 6'-2" wide

SL STAGE LOADING DOOR:

100' push from street. 15' push to stage.
6'-4" high x 5'-6" wide* (Alley restricted to 3'-6" width.)

BASEMENT ACCESS:

Trap in stage floor USR.
10' wide by 4'-0" deep (3'-6" passable depth)
One (1) 1-ton motor spotted above trap, operated by pickle near trap.

ALT. BASEMENT ACCESS:

SL Basement Loading Door
85' push from street
This is a steep ramp with overhead clearance issues. Max roadcase allowable is approximately 6'-6" H x 4' L x 3' D.
Stairs to basement can be covered with ramp. Block & fall may be used to lower cases to the basement. Typically, a ½ ton 110v motor is rented. Please contact Production Manager.

FOH LOBBY DOOR:

For FOH Lighting, Audio and
Merch Only! 6'-4" h x 5'-6" w
Requires props crew to lay masonite in lobby and house to protect carpet. No elevator to upper lobbies. Basement lobby cannot be used to stage/store cases.

STAGE FEATURES & DIMENSIONS

STAGE DIMENSIONS:

Smoke Pocket:	0'-4" deep, from plaster line. Fire curtain must remain unobstructed.
Proscenium Width:	41'-11"
Proscenium Height:	31'-9" (at center)
PL to Back Wall:	33'-1" (31'-7" unobstructed, see pilaster detail.)
PL to Lineset 2:	1'-3" (first available lineset)
PL to Lineset 58:	29'-7"
PL to Apron:	1'-11" (at center)
Stage Width:	87'-6"
CL to SR Wall:	51'-0"
CL to SL Wall:	36'-6"
CL to SL Fly System:	34'-4"
CL to SR Jump:	36'-8"
SR Jump Floor:	26'-9"
Clearance under SR Jump:	23'-3" (23'-7" under permanent storage trolley beam)
CL to SL Jump/Fly Floor:	31'-2"
SL Jump/Fly Floor:	26'-9"
Clearance under Fly Floor:	23'-4"
CL to SL Weight Floor:	30'-5"
SL Weight Floor:	53'-1"
SL Upper Weight Floor:	63'-1"
Walking surface of grid:	72'-6"

Motor for genie storage SR. Contact Curran Production Manager to rent.

STAGE FEATURES:

10'-0" w x 3'-6" d, located USR. Motor spotted above.
No forklift in-house. Contact Production Manager to rent.

Trap to Basement:
Equipment/Lifts:

- House Motors:
- (1) 1-ton High-Speed motor above SR jump on trolley.
 - (1) 1-ton Motor above Stage Trap.
 - (2) 1-ton Motors above typical FOH cluster points.
 - (2) 1-ton Motors above typical audio tower/array points.
 - (4) 1-ton Motors installed for House FOH Truss.
 - (1) 1-ton Motor for Genie storage, typically SR.
 - (1) 1-ton Addl spare Motor

CURRAN

Fire Protection Equip.:

Clear access must be maintained to the following permanent equipment on the stage:

- Main building fire alarm panel is located on SR.
- Sprinkler valves for grid sprinklers USR.
- Fire hose located on SR.
- Fire curtain release lines DSL & DSR.

Stage Floor Surface:

3/8" MDF, painted satin black.

Stage Floor Construction:

3/4" Plywood, over 2-1/2" tongue and groove Douglas Fir.

Fir T&G sits on transverse glue-lam beams on 4' centers.

Off-stage areas, beginning 23' left and right of center are wood over concrete slab. Apron, beginning 12" upstage of plaster, is wood over concrete slab.

CURRAN

RIGGING

COUNTERWEIGHT SYSTEM:

58 Linesets
57'-0" long battens, on 6" on center, 7 liftlines/set, most kickable, some exceptions.
35,000 lbs. Counterweight available.
Linesets 1-18, Double Purchase
Arbor Capacity: 2000 lbs.
High Trim: 67'-3"
Low Trim: 4'-6"
Linesets 19-58, Single Purchase
Arbor Capacity: 1000 lbs.
High Trim: 65'-0"
Low Trim: 4'-6"
Upper Weight Bridge: For single purchase linesets.
Lower Weight Bridge: For double purchase linesets.
Locking Rail: SL Jump only
Lineset Schedule: See Appendix A

HEMP:

Pin Rails on SR and SL Jumps.
60 Spot-line Loft Blocks Available.
Hemp lines available.

SR JUMP:

Approximately 12' x 30' of working space.
Several company switches available. See Electrics.
FOH transfer circuit tails. See Electrics.
One (1) High-speed 1-ton motor on trolley to ferry equipment up from stage.

GRID:

Access via stairs from SL jump, or straight ladder from SR/SR Jump.
Counterweight system is loft block, grid mounted.
Linesets kickable.
30 pieces of grid pipe available.
4'x4' Trap USR

FOH RIGGING POINTS:

The Curran has Phantom Steel. See Appendix B for all FOH point locations.

CURRAN

SOFTGOODS

MAIN CURTAIN:

Encore "Corona", sewn with 100% fullness.

1-panel. Operates as a guillotine curtain only. Hung on Lineset 1.

MASKING:

- Two (2) Borders, 57'-0" W x 12'-0" H, Black Wool Serge.
- Eight (8) Legs, 12'-0" W x 30'-0" H, Black Wool Serge.
- One (1) Full-Stage Black, 50'-0" W x 30'-0" H, Black Wool Serge.
- One (1) Split Full-Stage Black, 2 Panels 30'-0" x 30'-0", Black Wool Serge.

MISC. SOFTGOODS:

- One (1) Black Sharkstooth Scrim, 50'-0" W x 30'-0" H.
- One (1) Bleached, Seamless, Muslin Bounce, 50'-0" W x 30'-0" H
- One (1) Da-Lite Dual-Vision Projection Screen, 28' W x 16' H (front & rear) (16:9 ratio)

ORCHESTRA PIT

Fixed floor 8'-0" below stage, 4'4" below house level.

Depth at Center: 11'-6"

Depth at SR & SL Extreme: 8'-6"

Apron Overhang: 0'-10"

Orchestra Equipment:

32 Manhasset Music Stands + 7 Generic stands
20 Music Stand Lights
30 Orchestra Chairs

CURRAN

ELECTRICS

COMPANY SWITCHES:

Panel	Capacity	Location	Connector	Notes
A	400 A	SR Jump, DS	Camlock	Breaker
B	400 A	SR Jump, DS	Camlock	Breaker
C	400 A	SR Jump, US	Camlock	Breaker
D*	400 A*	SR Jump, US	Camlock	Breaker, *Generator Trans.
E	200 A	Stage, DSR	Tails	ISOLATED Ground, Fused
F	200 A	Stage, USL	Camlock	Breaker

*Panel D is a generator transfer panel. Generator rented by productions as needed and parked on top floor of parking garage behind theatre. Corresponding input panel with Camlock connectors located on roof of stage house.

HANGING POSITIONS:

All transfer circuits connector are 20-amp stage-pin, except where noted.

All transfer circuits terminate on SR jump with tails.

HR Near Box Boom:

12x 20-amp Transfer Circuits
DMX Transfer
House 2 Port ETC Net 3 Gateway Avail.
5x 36" Safer Sidearms
~40' to Plaster Down Center
200' Cable run to SR Jump

HL Near Box Boom:

12x 20-amp Transfer Circuits
DMX Transfer
House 2 Port ETC Net 3 Gateway Avail.
5x 36" Safer Sidearms
~40' to Plaster Down Center
100' Cable run to SR Jump

HR Far Box Boom:

12x 20-amp Transfer Circuits
DMX Transfer
House ETC Net3 Available
5x 36" Safer Sidearms
~65' to Plaster Down Center
250' Cable run to SR Jump

HL Far Box Boom:

12x 20-amp Transfer Circuits
DMX Transfer
House ETC Net3 Available
5x 36" Safer Sidearms
~65' to Plaster Down Center
125' Cable run to SR Jump

Mezzanine Rail:

24x 20-amp Transfer Circuits, distributed along rail.
DMX Transfer, House 2 Port ETC Net 3 Gateway Available
~41' to Plaster Down Center
~50' of Hanging position. House cameras are positions from 0'-0" to 1'-6" house-left of center.
Please note: The pipe was originally intended for conventional fixtures only. Discuss with Head Electrician the limitations of using moving lights in this position.
125' Cable run to SR Jump

Balcony Rail:

4x, 6-circuit 19-pin SOCAPEX Multis with staggered stage pin connectors distributed along rail. Production can replace break-in/break-outs as needed.

DMX Transfer, House 2 Port ETC Net 3 Gateway Available

~64' to Plaster at Center

~50' of Hanging position. Two (2) architectural lights must remain in place, ~3' left and right of center.

Please note: The pipe was originally intended for conventional fixtures only. Discuss with Head Electrician the limitations of using moving lights in this position.

150' Cable run to SR Jump

House FOH Truss:

12x 20-amp Transfer Circuits

No DMX Transfer

~53' Throw (typical trim at 39')

40' Ladder truss, hang top and bottom, up to 75lb/ft.

3 Permanent speakers.

200' Cable run from to SR jump

Focus track & chair hangs immediately downstage of truss.

Road Truss:

Rigging Points Available. See Rigging Information.

Follow Spot Booth:

~103' to Plaster Down Center

No DMX Transfer

Accommodates 3 follow-spots.

(3) 120v, 30-amp circuits with L5-30 receptacles.

(3) 220v, 30-amp circuits with L6-30 receptacles.

200' Cable run from SR Jump.

ETC Network tap available

Proscenium Booms:

Can be installed on a production-by production basis if-needed.

No transfer circuits.

FOH CONSOLE POSITIONS:

There is an open booth at the back of the orchestra, Center, for lighting.

House Right Box:

Rear Orchestra:

Typical position.

Shared with audio. Expansion kills seats.

No DMX Transfer.

No DMX Transfer.

2 House ETC Net3 Taps Available

2 House ETC Net3 Taps Available

250' Cable run to SR Jump

200' Cable run from to SR jump

IN-HOUSE LIGHTING PACKAGE

Available Inventory:

- ETC GIO @5 4K 8 universe with 4.096 Outputs/ Parameters
- Touch screen Monitor
- 24x2k Sensor Pack
- 36 way 110/220v PD Rack
- 12 - ETC Source 4 - 19 degree w/top hat
- 6 - ETC Source 4 - 26 degree w/top hat
- 10 - ETC Source 4 Series 3 LED Lustr's with Power con to stage pin connectors
- 4 - 19 deg lustr barrels
- 4 - 26 deg lustr barrels
- 2 - 36 deg lustr barrels
- 8 - High End/ETC Lodestar UltraBrights
- 12 - Mac Aura XPL's with case
- 8 - Color Force II 72's
- 1 - Lycian M2 Modular 2500W Medium Throw Follow Spot with Electronic Ballast
- 2 - water based Hazers
- Cable and Distro Package

PROJECTION PACKAGE

Available Inventory:

- PANASONIC PT-DZ21KU2
- Lens: D75LE10
- Standard position hangs on Mezzanine Rail
- Da-Lite 99865, 16'x28' Dual Vision Fast-Fold Screen.
- More information available upon request.

CURRAN

PYROTECHNNICS/OPEN FLAME SPECIAL EFFECTS

FLAME RETARDANCY:

Productions must submit copies of all flameproofing certificates to the Curran prior to the start of load-in. Productions should be prepared to produce samples for the Fire Marshall if requested.

HAZE AND FOG:

Productions must submit copies of MSDS sheets for all haze and fog solutions used prior to the start of load-in.

OPEN FLAME AND PYROTECHNICS:

ANY open flame or pyrotechnic effects require permits from the City of San Francisco. It is the productions responsibility to obtain the approvals and permits from the authority(s) having jurisdiction. The Curran Live staff will assist with this process.

- Productions must provide detailed information about the effects, how they are used, where they are used, safety equipment and MSDS sheets no later than 4 weeks prior to load-in. Production should be prepared to demonstrate all effects prior to the first performance if requested by the authorities.
- If the Production does not have a Pyrotechnician licensed in the State of California and by the City of San Francisco, a locally licensed Pyrotechnican will be required to be added above the Yellow Card.

GENERAL FIRE MARSHALL REQUIREMENTS

The Fire Marshall in San Francisco is known for making spot inspections 3-minutes prior to curtain. Please help ensure you production is not interrupted by following these policies:

- Productions must submit copies of all flameproofing certificates to the Curran prior to the start of load-in. Productions should be prepared to produce samples for the Fire Marshall if requested.
- Nothing can be attached to or hung from sprinkler pipes or overhead water pipes. All sprinkler heads must remain unobstructed.
- All fire extinguishers, fire hoses and sprinkler valves must be unobstructed with a clear path to access equipment in an emergency.
- Egress pathways must be kept free of obstructions and hazards. Road cases and quick-change areas should not be places in hallway

AUDIO

MAIN AUDIO SYSTEM:

The Curran is equipped with under-mezzanine, under-balcony, and balcony fill system as well as a Meyer Point Source PA.

Under Mezzanine Fills:

9x Meyer UPM-1XP's permanently installed.
XLR Input in DSL Panel.

Under Balcony Fills:

9x Meyer UPM-1XP's permanently installed.
XLR Input in DSL Panel.

Balcony Fills:

3x Meter UPQ-1P's mounted on House FOH Truss.
XLR Input in DSL Panel.

CENTER CLUSTER:

No house center cluster or truss for this position.
2x 1-ton motors available. See rigging information.

SPEAKER TOWERS:

Typically located on stage of the proscenium.
Platforms exist in-house for speaker towers, approximately 3'-6" wide and 3'-6" deep.
2x 1-ton motors available. One hung above each typical tower location.
See rigging information.

PROGRAM FEED AND BOH PAGING SYSTEMS

Backstage monitors system is installed in all backstage areas.
Page microphone can be located DSL or DSR.
(XLR balanced input.)
Line-level program feed input DSR.

INTERCOM:

The Curran is equipped with a Clear-Com Helixnet infrastructure. A limited number of Helixnet basestation is permanently installed in house rack.

- 8 x 2-channel Helixnet Beltpacks (Powerline, no POE beltpacks)
- 2x 4-channel Helixnet Stations
- House Dept. Head offices are equipped with Helixnet speaker boxes.

LISTENING ASSISTANCE DEVICES:

The Curran is equipped with an infrared assisted listening system.
Uses program feed input.

FOH MIX POSITION:

Rear, House Left of Orchestra, 61' feet to Plaster Line. 8'-4" wide x 6'-0" deep. Expansion requires seat kills.
150' Cable run from to SR

TYPICAL CABLE RUNS:

SR to Orchestra Pit (via basement): 75'

SR to SL (via basement): 120'

SR to Spot Booth: 250'

SL to Fly Floor: 50'

CURRAN

IN-HOUSE AUDIO PACKAGE

Available Inventory:

Meyer Ultra X40

- Center Orch Proscenium Truss
- Left/Right Orchestra
- Left/Right Mezz

Meyer Ultra X42

- Center Mezz - Proscenium Truss
- Center Balc - Proscenium Truss
- Left/Right Balc - Proscenium (removed if towers are used)
- Left/Right/Center Balcony Delay (FOH Delay Truss)

Meyer UP-4 Slims (11)

- Front Fills (7)
- Orchestra Side Fills (2)
- Mezz Side Fills (2)

Meyer UPM-1P (17)

- Stall Delays (9)
- Mezz Delays (8)

Meyer MM4 (2)

- Mezz Box Fills L/R

Meyer 900LFC (6)

- Subs Floor HL & HR (2)
- Subs Flown Left Proscenium Truss (2)
- Subs Flown Right Proscenium Truss (2)

Meyer Ultra X 20

- Orchestra In Fills Left/Right

Floating Inventory:

- UPQ (3)
- UP4 Slims 2 (limited rigging)

Wired Intercom Helixnet

- 6 Belt packs/ HRC

The permanently installed sound system in The Curran Theater includes a 1 channel Sennheiser IR assisted listening systems, paging and backstage audio feed.

**See Appendix F for plot.*

WARDROBE

Wardrobe area is located in the basement, stage left

Features:

- Double-basin sink.
- 2 Front-Loading LG Washers & Dryers.
- 1 Top load washer
- 2 Steamers, 2 Irons, & 2 Ironing Boards Available.
- Four (4) 6' Z-Racks w/top and bottom shelves available. More available on request.
- Folding tables & chairs available from Props dept.

PROPS

Available Inventory:

- (4) 8' Folding Tables
- (10) 6' Folding Tables
- (4) 4' Folding Tables
- (30) black stackable orchestra chairs
- (50) plastic black chairs
- See ORCHESTRA on page 8 for orchestra chairs & music stands.

CURRAN

DRESSING ROOMS & OFFICES

Wi-fi is available across the entire venue, included dressing room areas. Hard-line connections can be activated in any dressing room upon request. A private Production Wi-Fi network is customarily set up for each show.

The Curran has a total of 17 dressing rooms of varying size, able to accommodate over 40 people. Each dressing room is equipped with a sink. All dressing rooms are located on stage left side of the building.

BASEMENT LEVEL:

Chorus Room 1	
10 stations	13'-8" x 18'-6"
Chorus Room 2	
10 stations	14'-0" x 11'-2"
Production Office 1	
	8'-0" x 10'-0"
Production Office 2	
	8'-0" x 8'-0"
Men's Restroom & Shower	
Women's Restroom & Shower	

STAGE LEVEL:

Dressing Room 1, 1 Station

Dressing Rooms:

2nd FLOOR:

- Dressing Room 2
1-2 Stations
- Dressing Room 3
1 Station
- Dressing Room 4
1 Station
- Dressing Room 5
1 Station
- Dressing Room 6
1-2 Stations
- Dressing Room 7
1-2 Stations
- Dressing Room 8
1 Station
- Single, Unisex Toilet

3rd FLOOR:

- Dressing Room 9
2 Stations
- Dressing Room 10
2 Stations
- Dressing Room 11
1 Station
- Dressing Room 12
1 Station
- Dressing Room 13
2 stations
- Dressing Room 14
2 Stations
- Dressing Room 15
1 Station
- Single, Unisex Toilet

INTERNET ACCESS

Wi-fi is available throughout entire venue, included dressing room areas. Hard-line connections can be provided in any dressing room, any office, and most other areas upon request.

The Curran's high-speed Internet access is shared across the building. Production with large bandwidth needs should discuss requirements and additional Internet services with the Curran Production Manager before load-in.

WiFi: Curran Production
PW: hP"2018"otter

BUILDING PHONES

The Curran is equipped with a digital phone system. If your production has specific phone needs please discuss with the Curran House Manager before your load-in begins.

BUILDING ACCESS

STAGE DOOR

The iconic Curran Stage Door is located on the right/west side of the theatre. From Geary, walk down the west alley to the right of theatre. Stage door is staffed starting 2-hours prior to curtain or 30-minutes prior to rehearsals and work calls. Access at other times must be arranged in advance with Curran Production Manager.

BACKSTAGE GUESTS

If your production allows backstage guests, all company members should notify the stage door person ahead and names added to the guest list. To insure the safety of all concerned, no one will be admitted who is not properly identified. When guest arrive, the stage door staff will page the company member to the stage door. All guests must be met by the company member and escorted at all times backstage. The stage door staff cannot leave the door to find someone or deliver messages.

KEYS

Company and Stage Management offices, as well as some other individual keys may be checked out by the Company Manager from the Curran House Manager. All keys must be returned prior to final settlement. Lost keys will result in a \$20 charge/key.

ADA ACCESS

The Curran is an ADA compliant venue. A wheelchair lift is installed in the alley on the left/east side of the theatre to access the stage level. There is a wheelchair lift off-stage-left to provide access to the accessible restrooms and showers in the basement.

The Curran's wheelchair lifts are not to be used for freight or for non-disabled passengers.

ADDITIONAL BUILDING INFORMATION

REHEARSALS / WORKCALLS

Rehearsals and work calls must be arranged with the Curran's Production Manager at least 24 hours in advance. At least one department head and stage door staff will be required for all rehearsals and work calls. All rehearsal related costs including added security are the responsibility of the production.

MINORS EMPLOYED BY THE SHOW

California has very strict Child Labor Laws. The Curran suggests that productions contact the Division of Labor Standards Enforcement for information on proper permitting and supervision requirements.

Division of Labor Standards
445 Golden Gate Ave., 10th Floor
San Francisco, CA 94102
(415) 703-5300

PETS

Only Service Animals are allowed inside the Curran. This is established for the health and safety of all those backstage, including pets. Various pest control devices in the backstage area could pose a threat to pets.

SMOKING

The Curran is a non-smoking facility. This is in accordance with California and San Francisco laws. Violations will result in fines. Any fines received by the theatre due to production violations will be billed to the production. Company members may smoke only when they are at least 15-feet from the Stage Door alley entrance.

HAZARDOUS CHEMICALS AND SPRAY PAINT

California law forbids the use of hazardous chemicals and spray painting inside the theatre. Spraying of any kind must be done outdoors or in a ventilated spray booth.

CURRAN

PARKING

PASSENGER VEHICLES

There is no parking onsite at the Curran. There are several parking lots within 1-2 blocks of the Curran. It is the productions cost and responsibility to make arrangements with local lots.

1 – *Mason O'Farrell Garage (24hrs)

325 Mason

2 – California Parking (24hrs)

665 Sutter St, 415-468-4860

3 – Pro Park Parking, Hilton (24hrs)

210 Ellis St. 415-775-3089

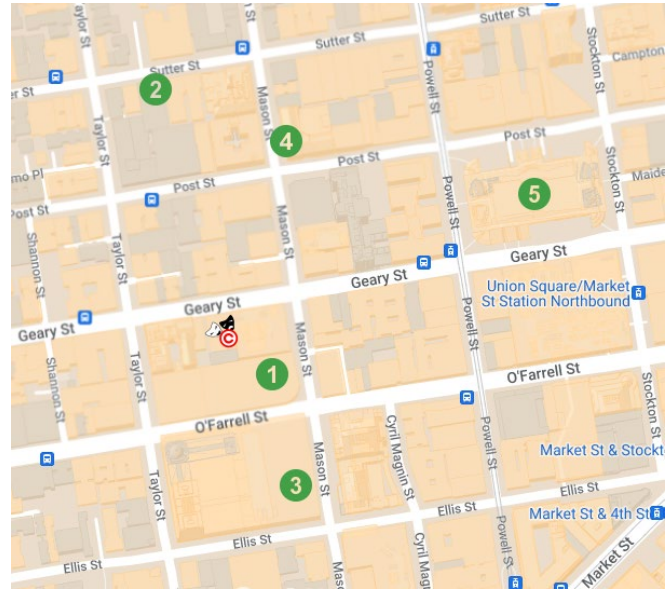
4 – Post & Mason Garage (6am-9pm)

520 Mason St, 415-829-3921

5 – Union Square Garage (430p-11p)

333 Post St, 415-397-0631

* - Mason O'Farrell Garage offers Curran employees a parking discount w/ badge. \$16 for 12hr.



TRUCK PARKING

Staging and parking for trucks and tractor-trailers:

Marshling Yard

Pier 80, San Francisco, CA

Contact – Ray Valentino

rayvstoragesanfrancisco@gmail.com

Phone: 415-760-8287

OR:

Cow Place

2600 Geneva Ave.

Daly City, CA 94014

Contact -

Andrew

Sherevearshreve@cowpalace.com

BUS PARKING

Phoenix Hotel (one spot for bus + trailer) 601 Eddy Street

San Francisco, CA 94109

Contact - Isabel Manchester

Isabel@phoenixSF.com

CURRAN

Stage Door: Located Stage LT
of West side of Theatre

Receiving Mail:

Your Name, Show Name Curran Theater
445 Geary St.
San Francisco, CA 94012

Time Zone: Pacific Time

Box Office Hours:

Daytime/Matinee Shows:

Wed/Sat – 11-3p
Sunday – 11-3p

Evening Shows:

Tue/Thu/Fri – 4-8p
Wed/ Sat – 4-8p

HEALTH CARE

HOSPITAL: Main:
St. Francis Memorial 415-353-6000
900 Hyde Street

PHARMACY: 415-391-7222
Walgreens
135 Powell St

URGENT CARE:
Carbon Health Urgent & 415-918-5766
Primary Care

GENERAL PRACTICE:
Dr. Jordan Shlain 415-732-7029
(24hr on-call)

WALK-IN CLINIC:
Sutter Walk-in Care 800-972-5547

SPORTS MEDICINE: 415-480-4569
Avid Sport Medicine

DENTIST: 415-781-2781
Emergency Dental Care

OBGYN: 415-955-8550
SF Gynecology INC.

CHIROPRACTIC: 415-421-1924
Union Square Chiro.

MASSAGE: 415-776-2200
SF Sport Massage &
Healing Arts

GYMS

24 HOUR FITNESS 415-776-2200
1200 Van Ness Ave.
Live Fit Gym 415-525-3454
1094 Bush Street

BANKING

BANK OF AMERICA: 415-837-1394
1 Powell St.
CHASE: 415-749-6535
1500 Polk St.
WELLS FARGO: 415-394-2900
460 Sutter St.
CITIBANK: 415-817-9113
99 Post Street

SHIPPING & MAILING

FED EX OFFICE: 415-359-0235
333 O'Farrell St.
(inside Hilton)
UPS STORE: 415-775-6644
950 Mason St.
POST OFFICE: 800-275-8777
1400 Pine Street

TAXI & PUBLIC TRANSPORT

YELLOW CAB 415-333-3333
CITY WIDE CAB 415-920-0700
SUPER SHUTTLE (airport) 800-258-3826

BART (subway): bart.gov
MUNI (bus): sfmta.com

**Closest Bart/ Muni station is Powell
Street*

RENTAL CARS

HERTZ: 415-264-2441
340 O'Farrell St.
ENERPRISE: 415-837-1700
340 O'Farrell St.
BUDGET CAR RENTAL: 628-895-0436
333 O'Farrell St.

LAUNDRY

CITY SERVICE CLEANERS: 415-392-4482
767 Bush St.
ANNIE'S CLEANERS: 415-202-0157
325 Mason St. #4
(inside parking garage) 415-674-6774
SF COIN LAUNDRY CO
(Laundromat)
895 Post St.

FLORISTS

SHOWCASE FLOWERS: 415-771-8323
325 Mason St.
(basement of garage)

CURRAN

CAFES

STARBUCKS:	628-399-7188
201 Powell St	
CAFECITO	415-874-9508
406 Ellis St	

RESTAURANTS (within ½ mile)

MASTRO'S STEAKHOUSE**	415-363-9539
399 Geary Street	
TRATTO**	415-292-8151
501 Geary Street	
PINECREST DINER	415-885-6407
401 Geary St.	
THE THONGLOR THAI:	415-346-3121
420 Geary St.	
HONEYHONEY CAFÉ & CREPERY	415-351-2423
599 Post Street	
OMA SUSHI	415-757-0066
330 O'Farrell	
TONTON RESTAURANT	415-874-9664
422 Geary Street	
KING OF THAI NOODLE	415-677-9991
184 O'Farrell St.	
MASON DINER	415-544-0320
329 Mason St	
PEARL'S DELUXE BURGERS	415-409-6120
708 Post Street	

***50% Discount for Curran Cast/Crew*

BARS

BOURBON AND BRANCH:	415-346-1735
501 Jones St.	
RYE COCKTAIL BAR:	415-474-4448
688 Geary St.	
JOHN FOLEY'S IRISH PUB:*	415-954-0777
243 O'Farrell St.	
BARTLETT HALL:*	415-433-4332
242 O'Farrell St.	
TONGA ROOM:*	415-772-5278
950 Mason St.	
GOLDEN GATE TAPROOM	415-677-9999
449 Powell Street	
OWL TREE	415-359-1600
601 Post Street	
BOTTLE CLUB PUB	415-423-2582
555 Geary Street	

**serves food*

GROCERIES

WHOLE FOODS
399 4 th St
SAFEWAY
145 Jackson St.
TRADER JOE'S
10 4 th St.

SAN FRANCISCO ATTRACTIONS

CITY LIGHTS – Allen Ginsberg & Beat Generation bookstore
MUSEE MECHANIQUE – old school arcade games. Free to enter, pay to play.
GOLDEN GATE PARK & BRIDGE – huge park, walkable bridge
LANDS END – see a view of the Pacific and the Golden Gate
EXPLORATORIUM – hands on science museum fun for all ages
LOMBARD STREET – famous crooked street
FERRY BUILDING – gourmet food stands, farmer's market, artisan's market
FISHERMAN'S WHARF – sea lions and clam chowder
DOLORES PARK & MURALS – SF Mission District
ALCATRAZ TOURS – see how Clint Eastwood Escaped.
PRESIDIO TUNNEL TOPS – National Park Space with Golden Gate Bridge views, trails, nature & picnic spots
MUIR WOODS – get out of town and see the world's largest trees
WINE COUNTRY – visit Sonoma and Napa for CA's best wines

APPENDICES ATTACHED:

APPENDICES:

LINESET SCHEDULE	appendix A
STAGE DETAIL/ RIGGING POINTS	appendix B
FRONT ELEVATION	appendix C
DRESSING ROOMS	appendix D
REP LIGHT PLOT	appendix E
REP SOUND PLOT (PENDING)	appendix F
SEATING CHART	appendix G

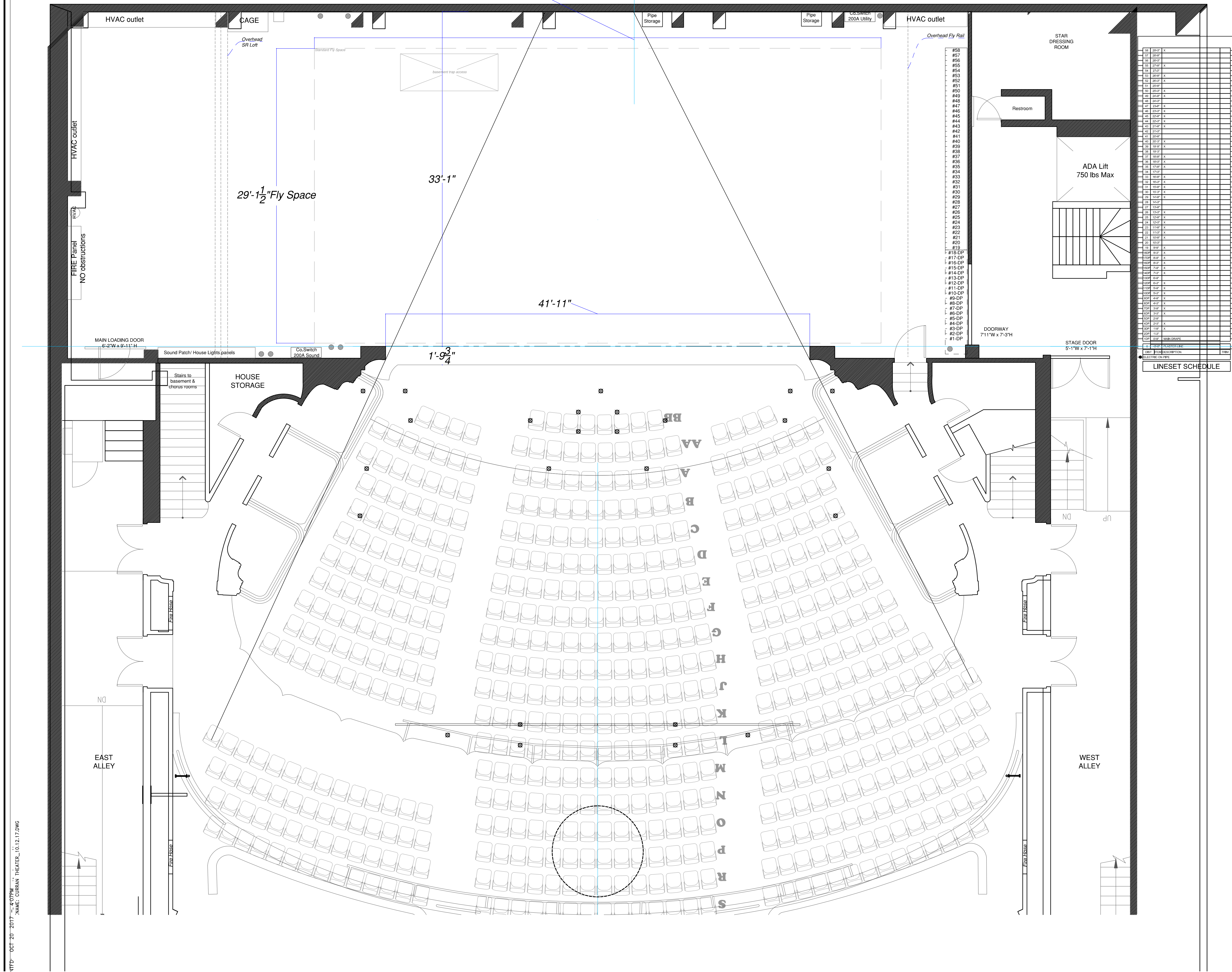
APPENDIX A – LINESET SCHEDULE

Lineart Schedule

Lineset	Type	Position	Show Title	Trim	Weight	Notes
		from "P" Line				1'-8" from PL to edge of stage
FIRE CURTAIN		0'-3"				
1	DP	0'-9"	Grand Drape	22'-0"		
2	DP	1'-3"	Teaser / BOC			
3	DP	1'-9"				
4	DP	2'-3"				
5	DP	2'-9"				
6	DP	3'-3"				
7	DP	3'-9"				
8	DP	4'-3"				
9	DP	4'-9"				
10	DP	5'-3"				
11	DP	5'-9"				
12	DP	6'-3"				
13	DP	6'-9"				
14	DP	7'-3"				
15	DP	7'-9"				
16	DP	8'-3"				
17	DP	8'-9"				
18	DP	9'-3"				
19	S	9'-9"				
20	S	10'-3"				
21	S	10'-9"				
22	S	11'-3"				
23	S	11'-9"				
24	S	12'-3"				
25	S	12'-9"				
26	S	13'-3"				
27	S	13'-9"				
28	S	14'-3"				
29	S	14'-9"				
30	S	15'-3"				
31	S	15'-9"				
32	S	16'-3"				
33	S	16'-9"				
34	S	17'-3"				
35	S	17'-9"				
36	S	18'-3"				
37	S	18'-9"				
38	S	19'-3"				
39	S	19'-9"				
40	S	20'-3"				
41	S	20'-9"				

CURRAN

42	S	21'-3"				
43	S	21'-9"				
44	S	22'-3"				
45	S	22'-9"				
46	S	23'-3"				
47	S	23'-9"				
48	S	24'-3"				
49	S	24'-9"				
50	S	25'-3"				
51	S	25'-9"				
52	S	26'-3"				
53	S	26'-9"				
54	S	27'-3"				
55	S	28'-9"				
56	S	29'-3"				
57	S	29'-9"				
58	S	30'-3"				
						2'-3" from last pipe to face of Column on back wall.



CURRAN

Carol Shorenstein
Hays Director & Founder

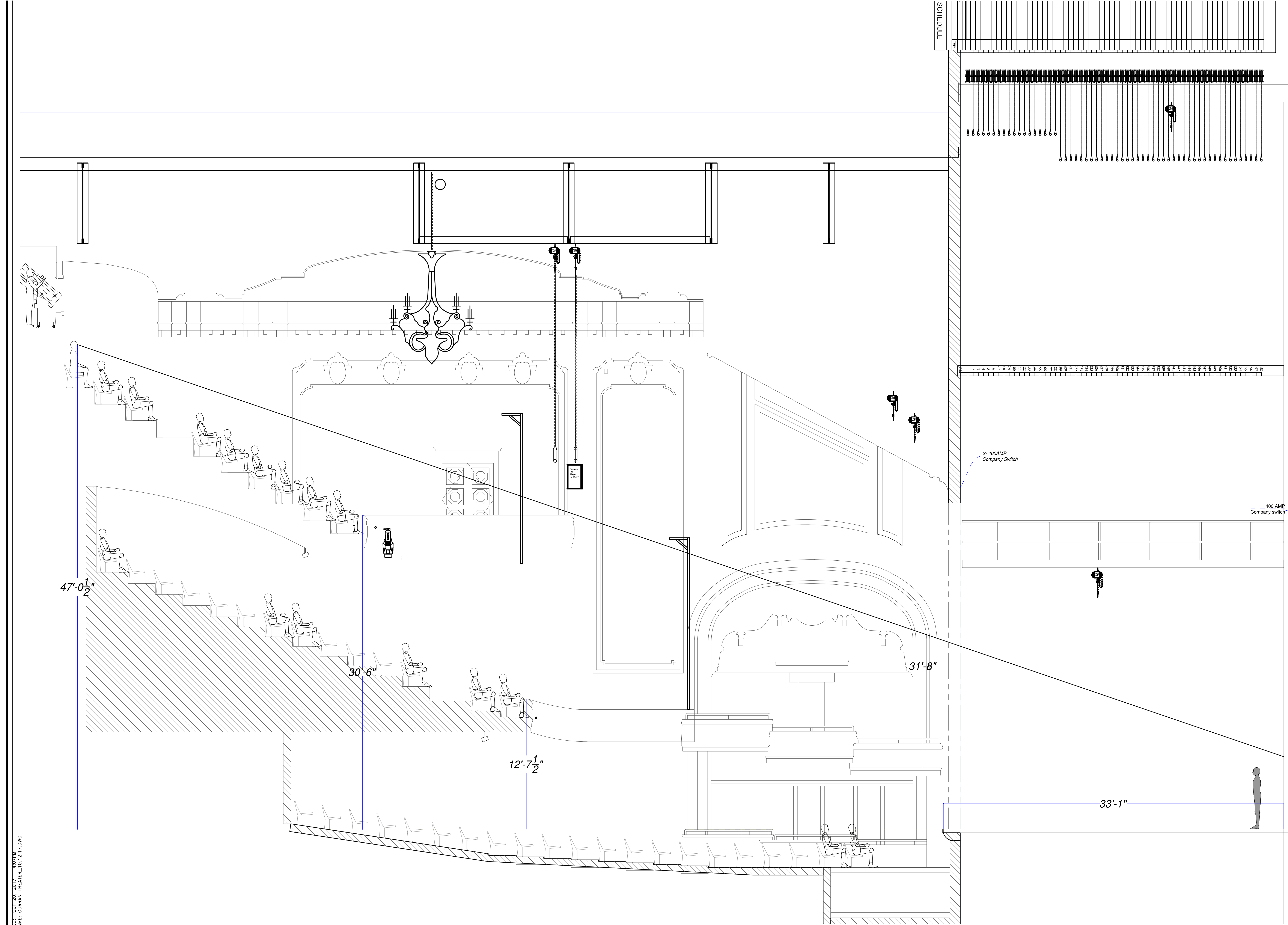
Greg Backstrom
Chief Operating Officer

Theater..... 445 Geary Street, SF, CA
Office..... 450 Geary Street, Suite 310, SF, CA
Office..... 270 W. 38th St., 20th Fl., NY, NY

2016-1
7

nalP dnuor
G

DRAWING
NUMBER 0-1
SCALE 1/4"=1'-0"
PRINTED: OCT 20, 2017 4:07PM
FILENAME: CURRAN
THEATER_10.12.17.DWG



CURRAN

Carol Shorenstein Hays
Director & Founder

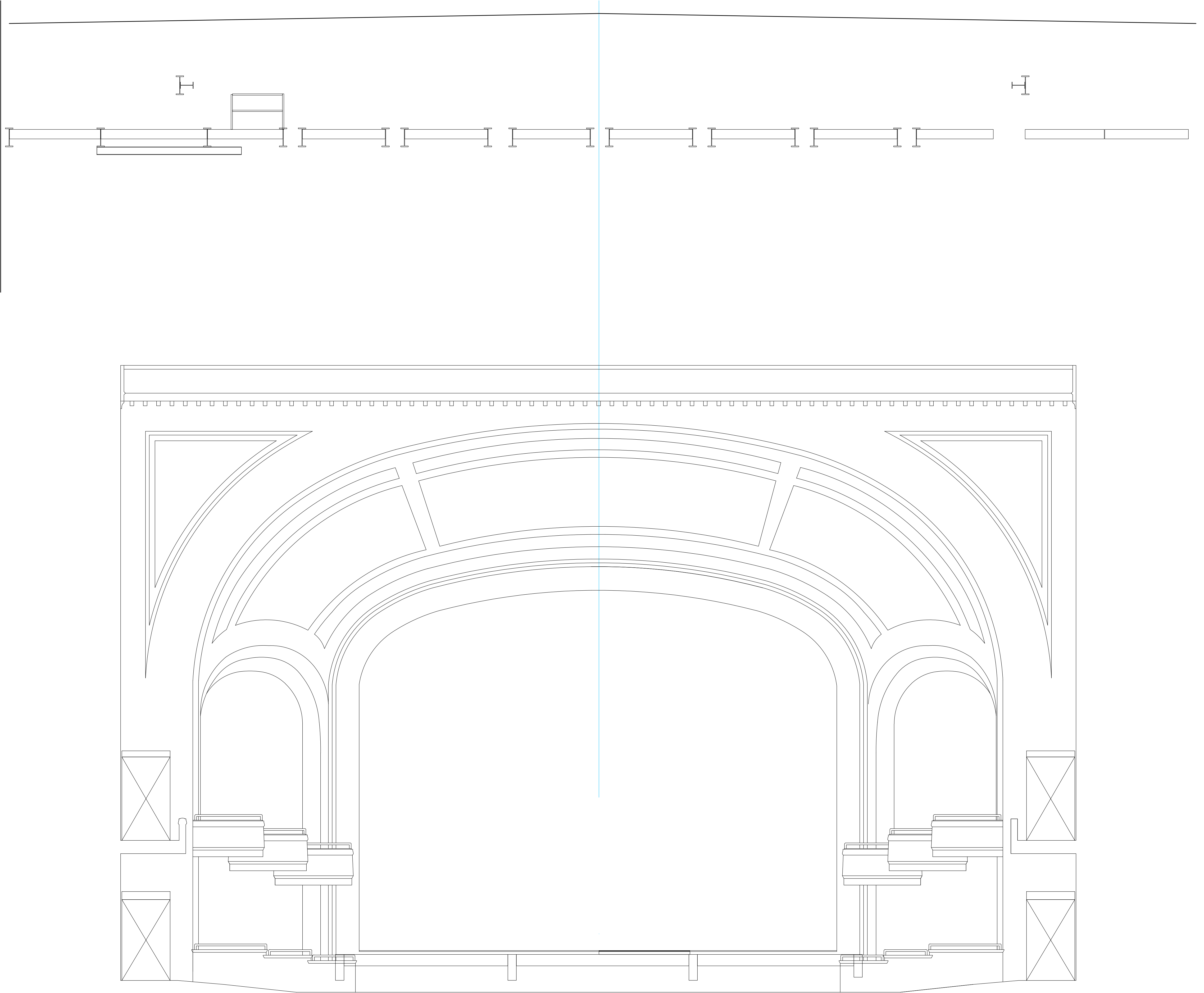
Greg Backstrom
Chief Operating Officer

Theater.....445 Geary Street, SF, CA, 94102
SF Office.....450 Geary Street, Suite 310, SF, CA, 94102
NY Office.....270 W. 39th St., 20th Fl., NY, NY 10018

2016-17

Section

DRAWING NUMBER:
SCALE: 1/4" = 1'-0"
PRINTED: OCT 20, 2017 - 4:07PM
FILENAME: CURRAN THEATER_10.12.17.DWG



CURRAN

Carol Shorenstein Hays
Director & Founder

Greg Backstrom
Chief Operating Officer

Theater.....446 Geary Street, SF, CA, 94102
SF Office.....450 Geary Street, Suite 310, SF, CA, 94102
NY Office.....270 W. 39th St., 20th Fl., NY, NY 10018

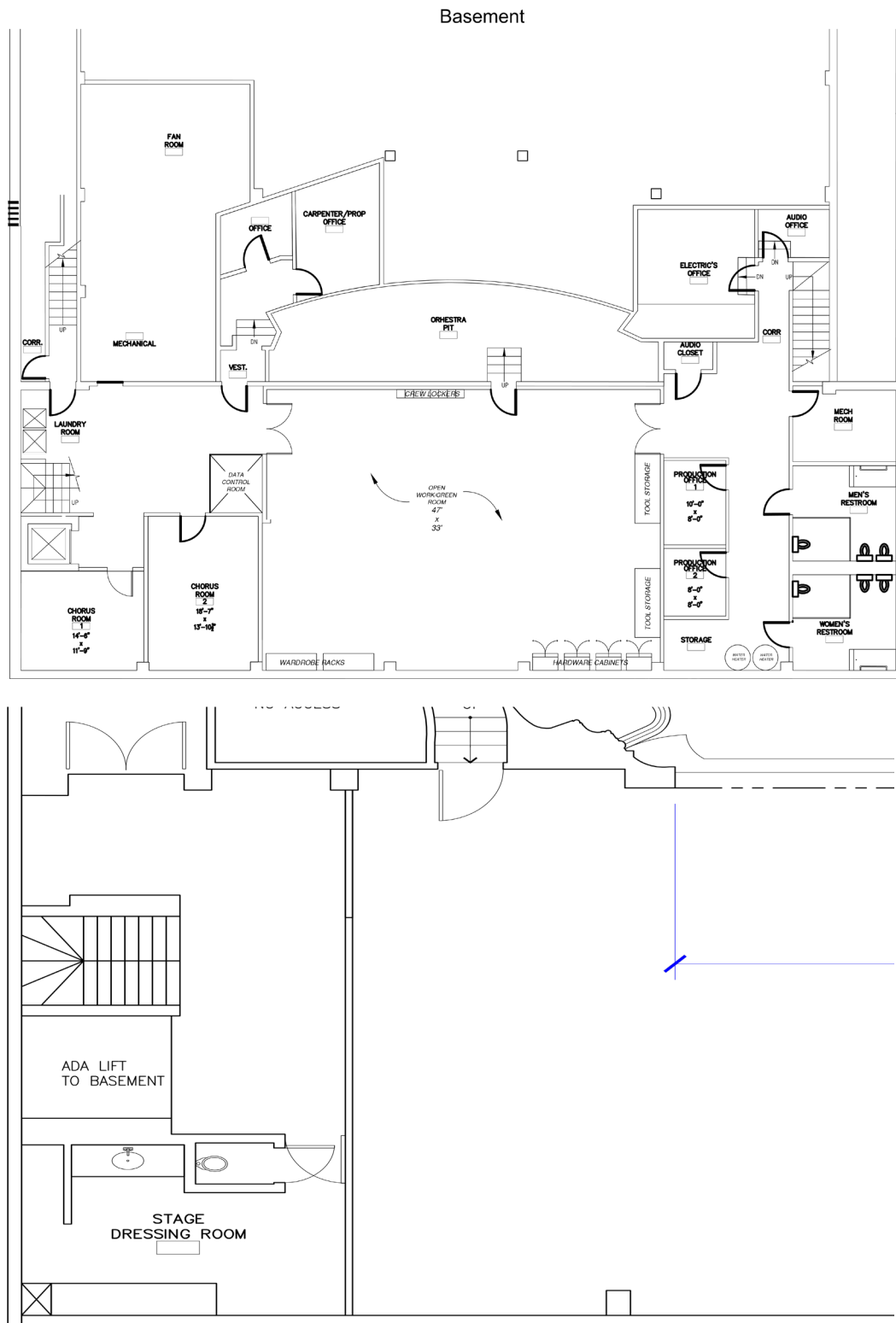
2016-17

Front Elevation

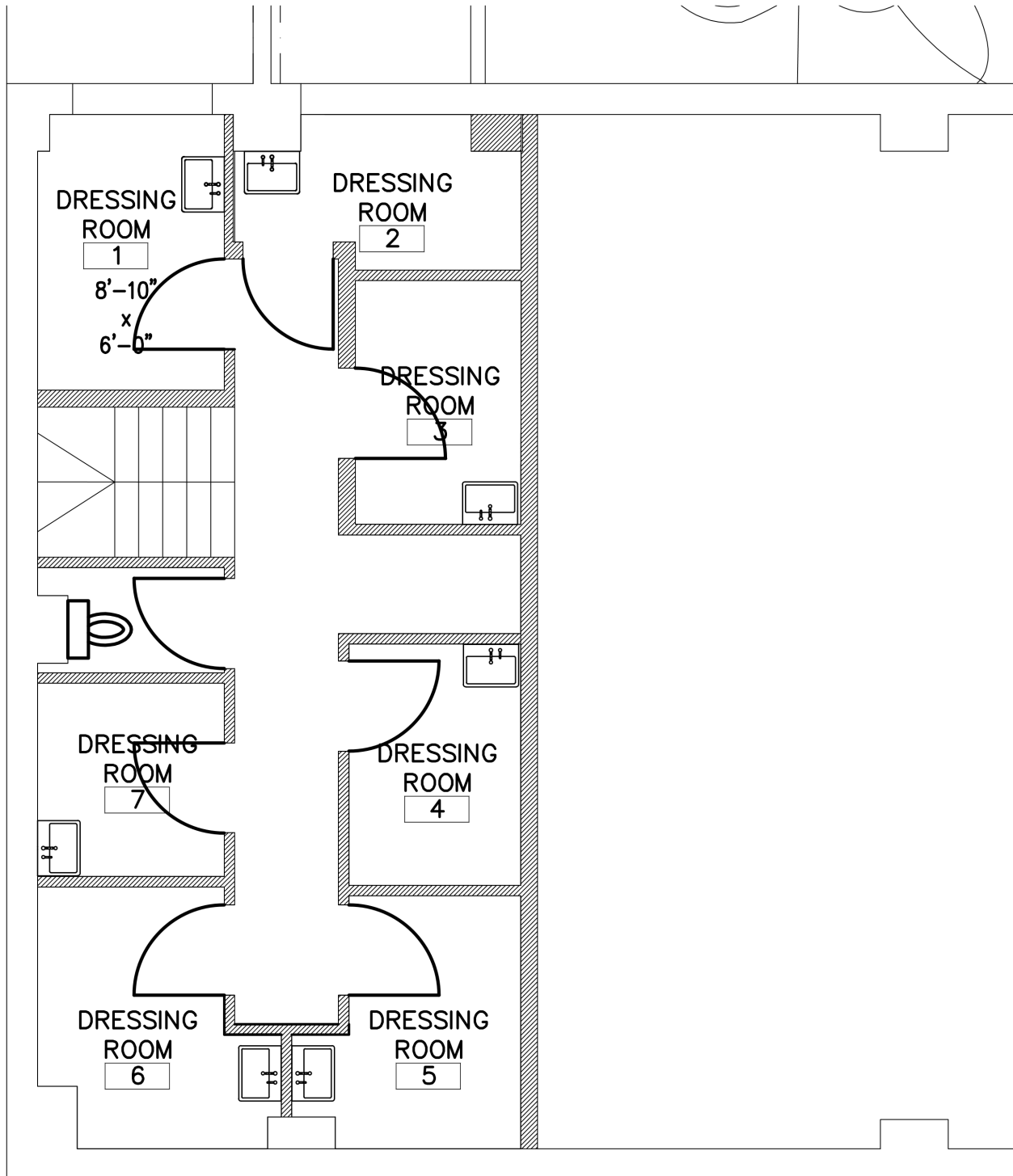
DRAWING NUMBER:
SCALE: $\frac{1}{4}'' = 1'-0''$
PRINTED: OCT 20, 2017 - 4:07PM
FILENAME: CURRAN THEATER_10.12.17.DWG

APPENDIX D – DRESSING ROOMS

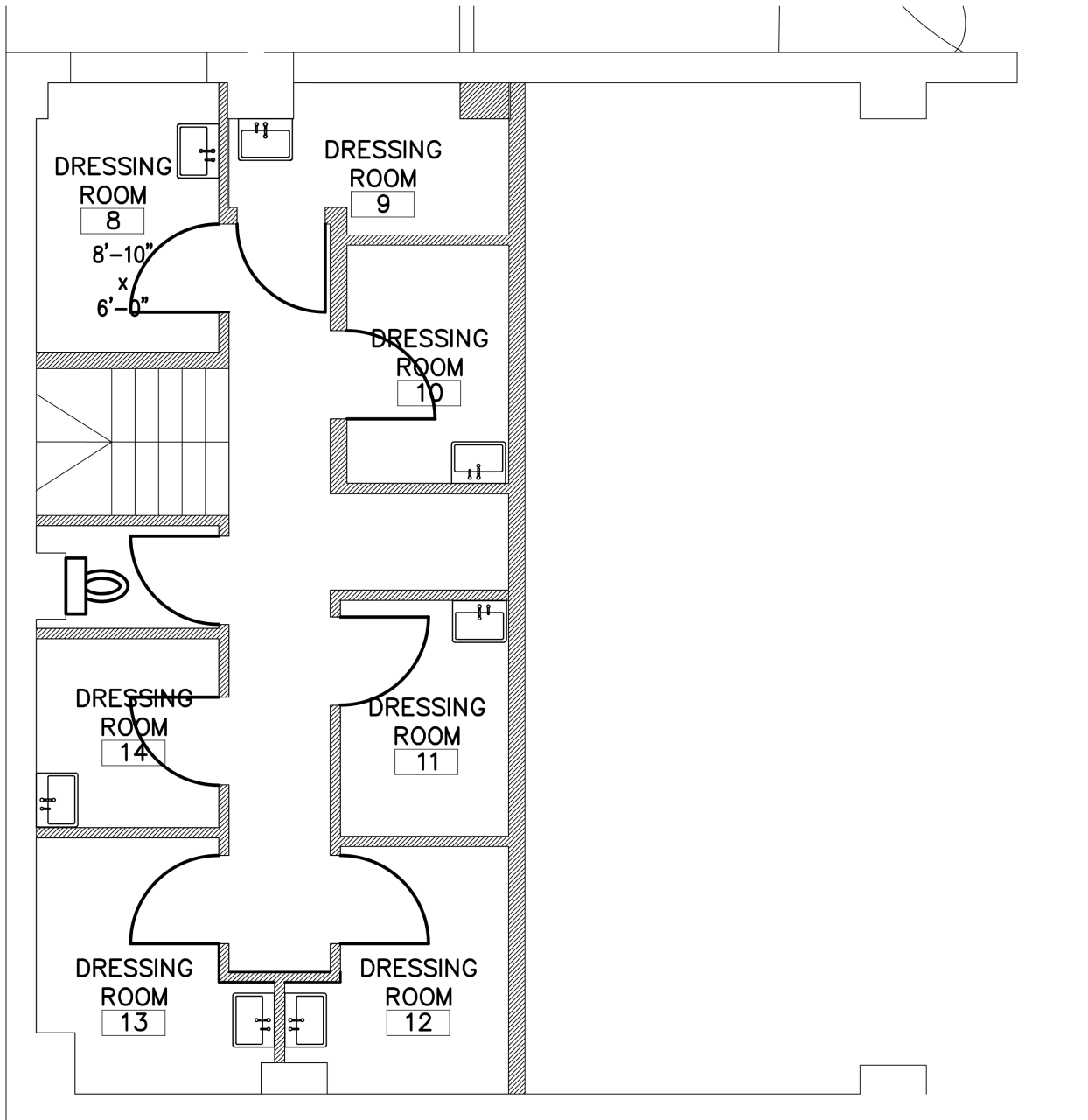
STAGE LEVEL



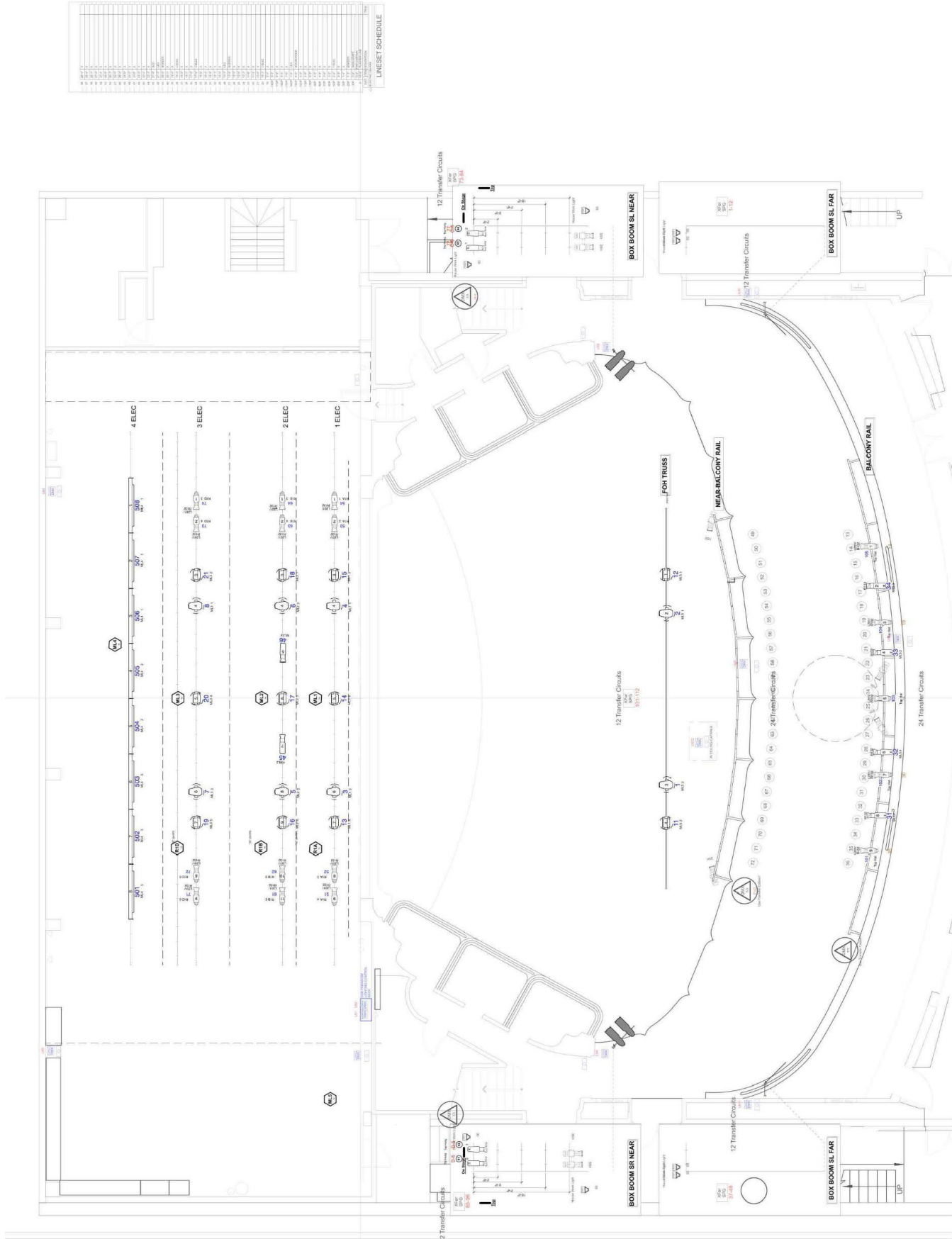
FLOOR 1



FLOOR 2

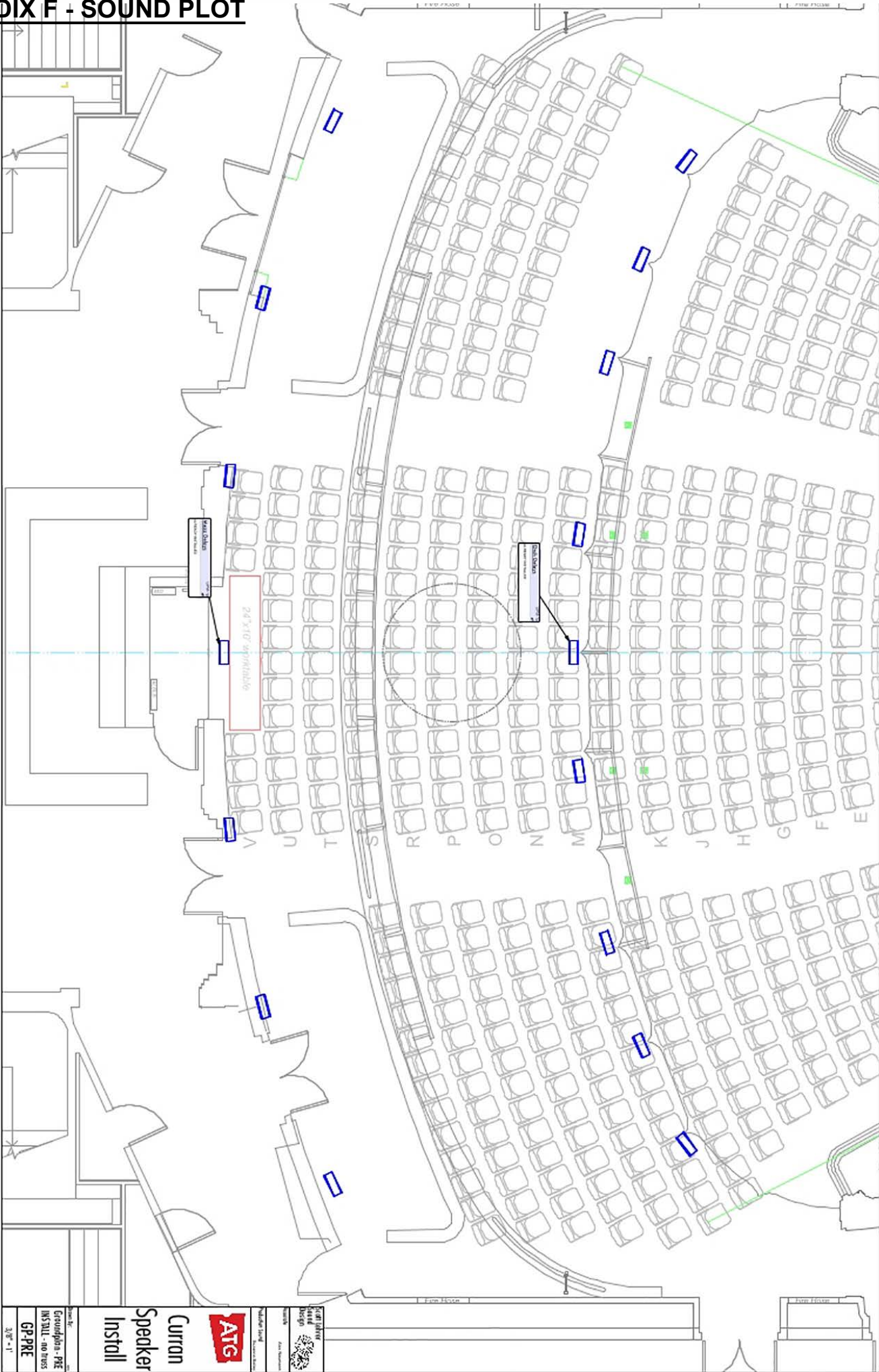


APPENDIX E – REP LIGHT PLOT

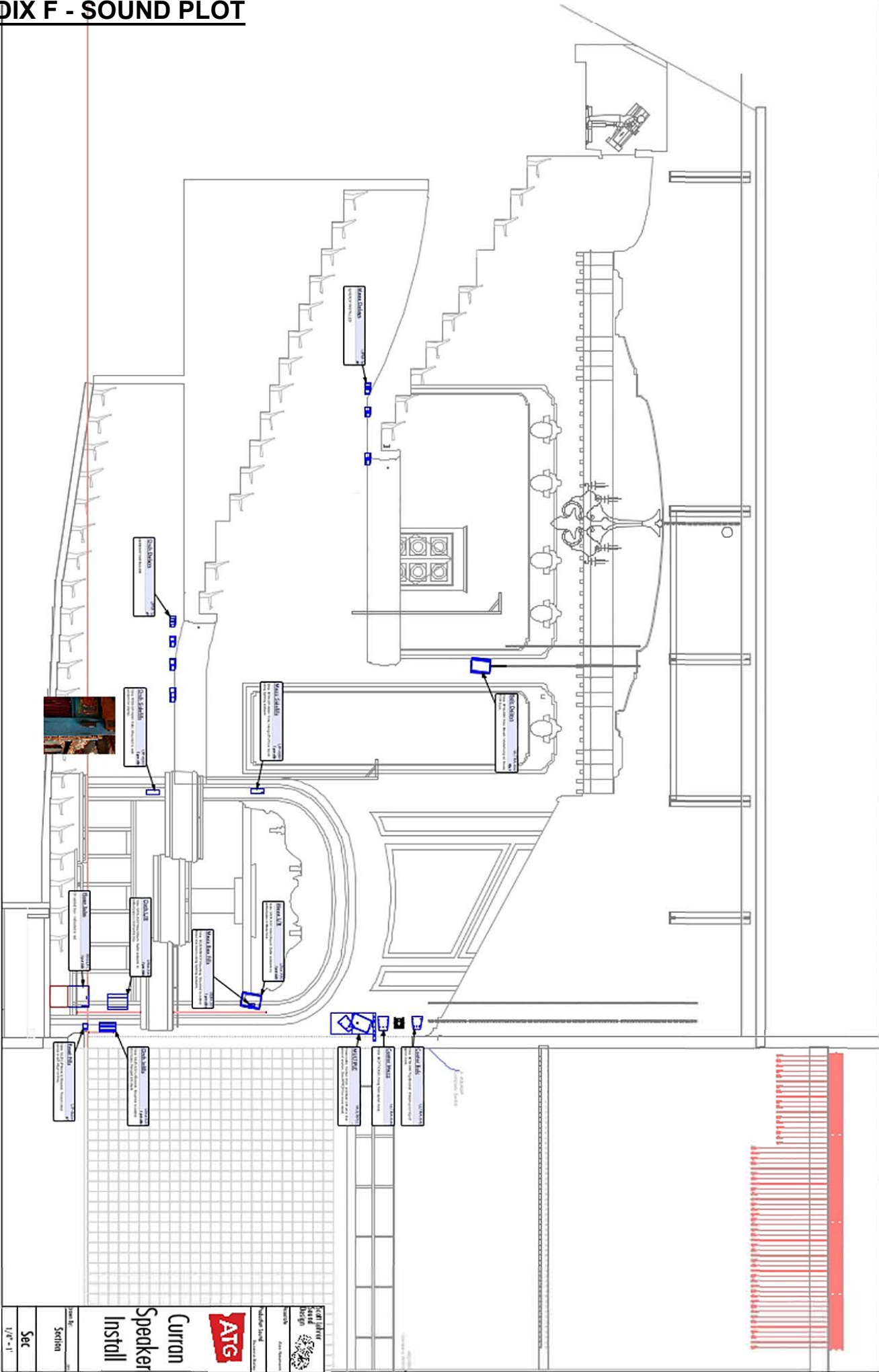




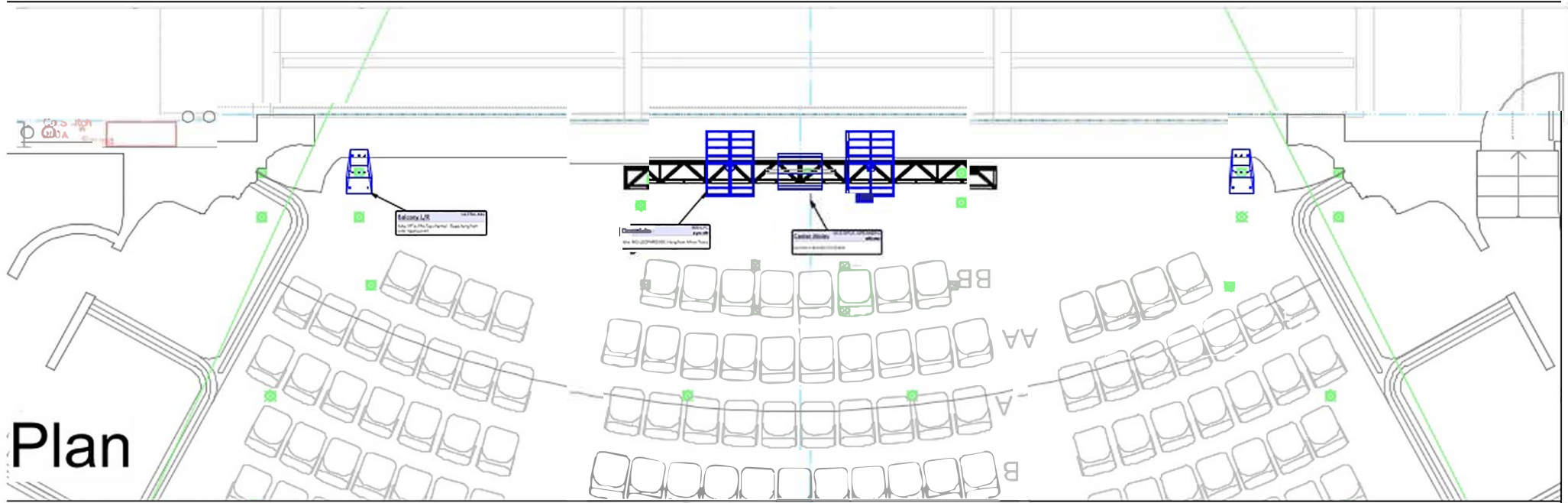
APPENDIX F - SOUND PLOT



APPENDIX F - SOUND PLOT

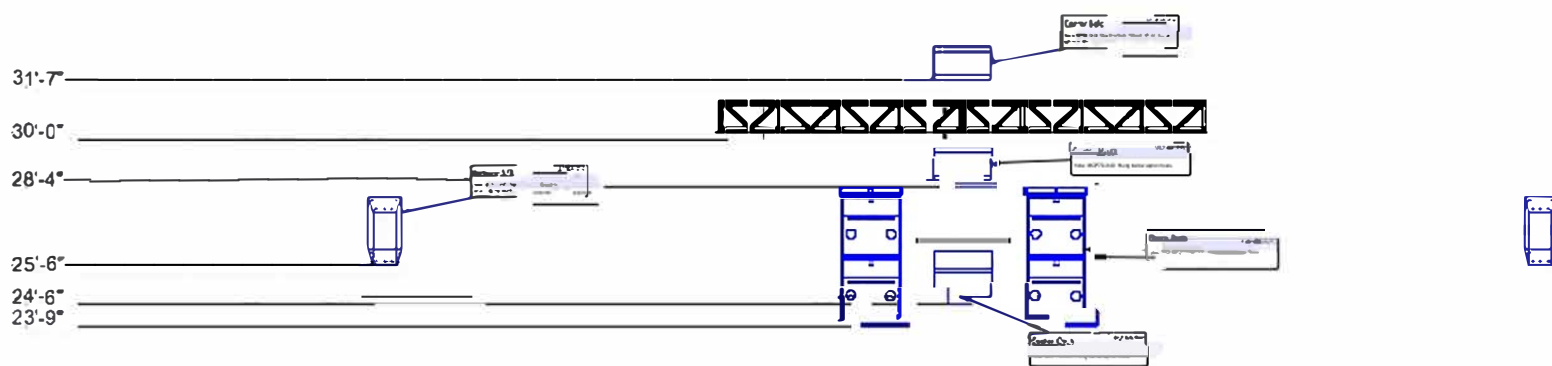


APPENDIX F - SOUND PLOT



Plan

Elevation



This hang has been modified. The Ultra X 40/42s and the LFC 900 are rigged tight to truss.

