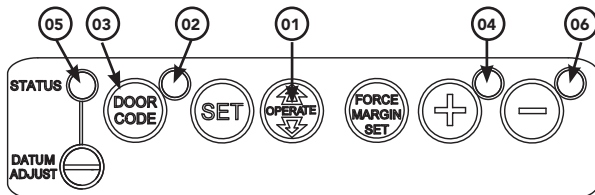


GDO-8 ShedMaster®

Weather Resistant Rolling Door Opener
Quick Operation Guide

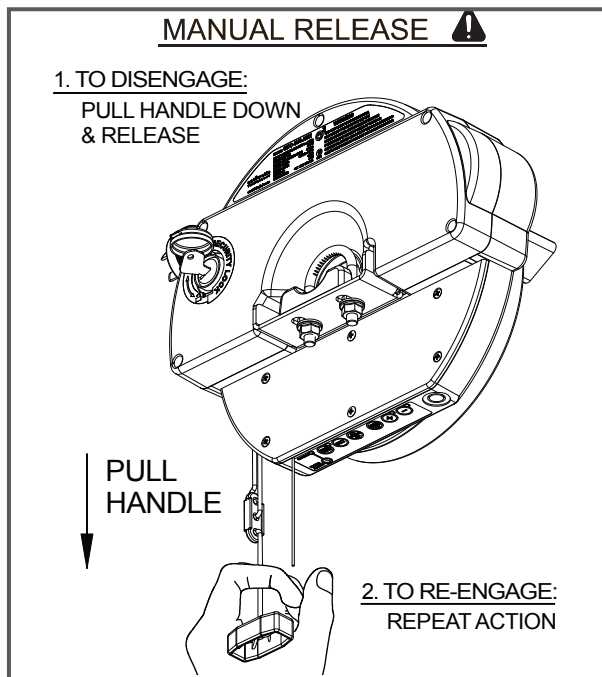
1.0 User Operating Controls



Button	Function
01	Open / Stop / Close
02	Flashes when a code is being stored or when a remote control button is pressed.
03	For storing or erasing remote control button code to switch the courtesy light on or off.
04	Flashes as the door opens and remains on when opened.
05	Illuminates when Service is due.
06	Flashes as the door closes and remains on when closed.

automatic
TECHNOLOGY

2.0 Manual Door Operation



2.1 To Disengage the Opener:

1. It is recommended to do so with the door in the closed position.
2. Pull the manual release cord towards the door, until you hear a click.
3. Move the door manually.



CAUTION: When the opener is manually disengaged, the door is no longer locked. To lock the door manually, re-engage the opener after the door is closed.

2.2 To Re-Engage the Opener:

1. Check the door has not been locked by a locking device.
2. Pull the manual release cord away from the door, until you hear a click.
3. The door will now operate from the opener.



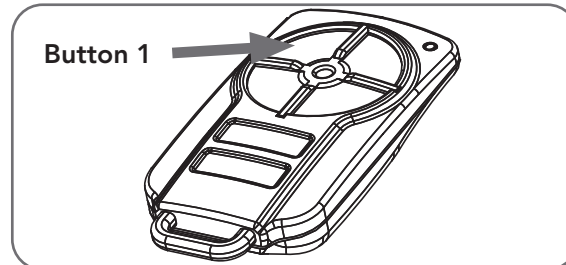
WARNING! Please test the manual release mechanism to ensure that the manual release is easy to operate. No more than 20kg of force should be required to disengage the door using the manual release cord. If excessive force is required, contact your dealer.

3.0 Coding a Remote Control

3.1 Storing the Remote Control Code:

The opener can only be operated from remote controllers that have been programmed into its memory. Up to 8 remotes can be stored in the memory.

1. Press and hold the DOOR CODE button.
2. Press Button 1 on the remote controller for two seconds. Release and pause for two seconds. Press the Button 1 again for two seconds.
3. Release the DOOR CODE button. The remote control button is now coded, press to test.

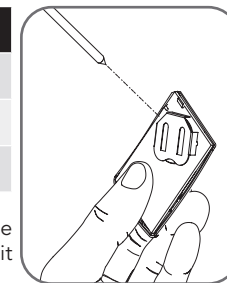


3.2 Battery Replacement:

Battery Type: 1 x CR2032.

1. To test the battery is working, press and hold a remote button. Check Light Status table to determine if battery needs replacing.

Light Status	Battery Status
Solid	OK
Flashing	Replace
No light	Replace



2. Use finger nails to separate the remote casing to expose circuit board.
3. Use a non-metallic object to push the battery down through the side opening to remove the battery.



WARNING! The battery is hazardous and must be kept out of reach of children. The battery can cause severe or fatal injuries within 2 hours or less if swallowed or placed inside any part of the body. If you suspect the battery has been swallowed or placed inside any part of the body, SEEK IMMEDIATE medical attention.

4.0 Troubleshooting

Symptom	Possible cause	Remedy
The opener does not work from the transmitter	The opener does not have power	Plug a device of similar voltage (e.g. a hairdryer) into the power point and check that it is OK
	The battery in the remote control is flat	Replace the battery
	The remote control button is not programmed to operate the door.	Code in the remote control button
One transmitter works but the other/s do not	Faulty remote controller	Replace remote controller
	Flat battery	Replace battery
The motor is running but the door remains stationary	The opener is disengaged	Re-engage the opener
The transmitter range varies or is restricted	Variations are normal depending on conditions e.g. temperature or external interference	Make sure you can see the door when you use the remote control.
	The battery life is exhausted	Check the battery status by pressing a button (flashing or no light requires battery to be changed)
	Position of the remote control in the motor vehicle	Aim the remote control through the windscreen.
The door reverses for no apparent reason	This may occur occasionally from environmental conditions such as areas that are windy, dusty or have extreme temperature changes.	Ensure the door runs smoothly before increasing the force pressure.
	If Safety beams are installed they may be partially obstructed.	Ensure the beam path is not obstructed. Check the Alignment.
The door stops or moves very slowly.	Garage door in poor condition e.g. springs may be broken.	Check the door's operation.
The SERVICE LED has started to flash and is beeping numerous times	A Fault has been detected. The fault will be active each time an attempt is made to operate the door.	Record opener function (How many beeps?) then press the SET button once to reset the opener. If the fault continues to be tripped contact 1300 133 944 for support.

5.0 Caring for your Opener

Preventative servicing of your garage door and opener, is important. Your garage door is made up of numerous moving parts designed to lift and lower your door safely and efficiently.

Ongoing preventative servicing ensures that your door continues to function within factory specifications, greatly reduces the risk of failure and repair bills down the track and ensures you maintain your Warranty.

Refer to your Owners Opener Handbook for your service schedule.



Refer to the installation manual for monthly testing procedures in Section 12 to ensure garage door is fit for use.

6.0 Need a Service Call?

If the opener needs a service please call the dealer who installed the garage door opener (their contact details are usually on a sticker on the back of your garage door).



Scan: for installation manual

For product assistance, general enquiry or more information, please visit:

ata-aust.com.au
or call **1300 133 944.**