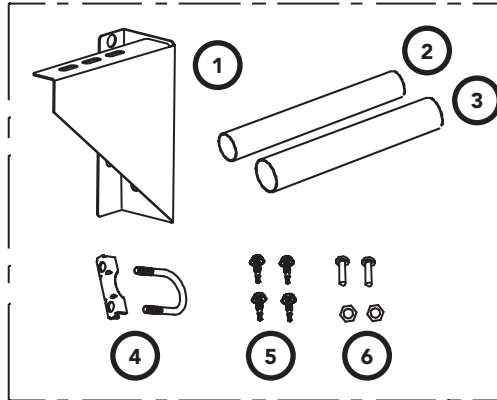


# Axle Extension Kit

## Installation Instructions

EXTENSION KIT		
ITEM	DESCRIPTION	QTY
1	HANGER BRACKET	1
2	EXTENSION PIPE 1" OD	1
3	EXTENSION PIPE 1 1/4" OD	1
4	U BOLT AND SADDLE	1
5	HEX HEAD SELF TAPPING SCREWS	4
6	NUTS AND BOLTS	2



## Please read these important safety rules



### WARNING!

- Place a 6 feet exclusion zone around area under the garage opening while installing door.
- DO NOT move under a door while it is on the door support (or lifting device).
- Follow the installation instructions.
- Fit door support (or lifting device) snugly under door before lifting.
- Ensure door support (or lifting device) is on flat ground.
- Ensure the door is immediately fastened to the bracket with the "U" Bolt.
- Ensure no-one walks under a door sitting on brackets.
- Keep the sheet door balanced. Sticking or binding doors must be repaired. Sheet doors, door springs, brackets and their hardware are under extreme tension and can cause serious personal injury. Do not attempt any sheet door adjustment. Do not use if repair or adjustment is needed. Only to be installed by professional sheet door installer.



### CAUTION:

Fall from ladder

- Ensure ladder is the correct type for job.
- Ensure ladder is on flat ground.
- Ensure user has 3 points of contact while on ladder.



**WARNING!** Do not allow persons around the door and prop. Serious personal injury and/or property damage can result from failure to follow this warning.

### 1. Propping the Door:

- At the end opposite to where the opener will be fitted, check that the U-bolt or tensioning device, which holds the door axle to the bracket is tightened securely.



**WARNING!** The U-bolt must be done up tightly to ensure the stored energy in the springs cannot be unexpectedly released.

- Open the door completely and tie rope around the door roll. Do not tie the rope too tight as damage to the curtain may ensue. This will stop the door unrolling.
- At the end where the opener is to be fitted, support the door with a door stand or suitable prop. Place a towel between the door and the prop to protect the door from damage.



**WARNING!** Make sure the prop is snug under the door and is stable.

### 2. Raising the Door:

- When in position, remove the U-bolt (or bolts) and saddle from the door bracket.
- Lift the door up and away from the wall until clear of the door bracket, before lowering the door to rest on the door stand or prop. (**Fig 1.1**)

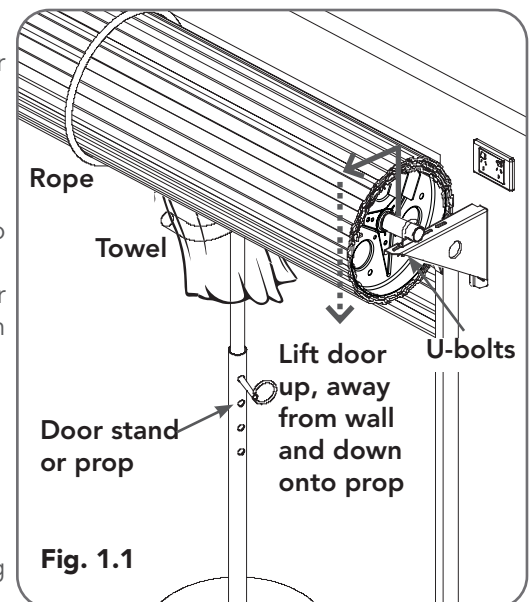


Fig. 1.1

### 3. Fitting the Extension to: (either 1" or 1 1/4" Axle)

#### Extension to a 1" Axle

- Insert the 1 1/4" extension pipe (3) over the end of the axle and push all the way down to the door drum in **Fig 3.1**.
- Drill a 3/16" pilot hole into extension pipe (3) on an angle 1" out from the curtain edge. (**Fig 3.1**)
- Fit tek screw to secure 1 1/4" pipe to axle.

**NOTE:** Follow the opener instructions to install the opener onto the axle, then continue with step 4.

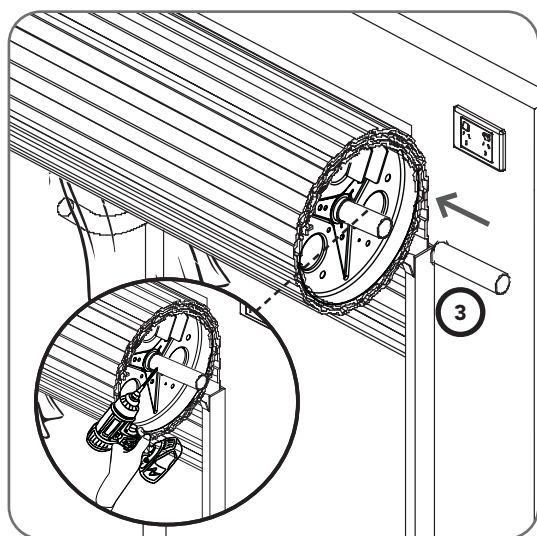


Fig. 3.1

#### Extension to a 1 1/4" Axle

- Insert the 1" extension pipe (2) into the end of the axle and push in half way into the axle in **Fig 3.2**.
- Drill a 3/16" pilot hole on an angle into the axle and through the extension pipe. (**Fig 3.2**)
- Fit tek screw to secure 1" pipe to axle.
- Insert the 1 1/4" pipe (3) over the 1" extension pipe. (If extension pipe is too long, cut pipe to fit sideroom before fitting)

**NOTE:** Follow the opener instructions to install the opener onto the axle, then continue with step 4.

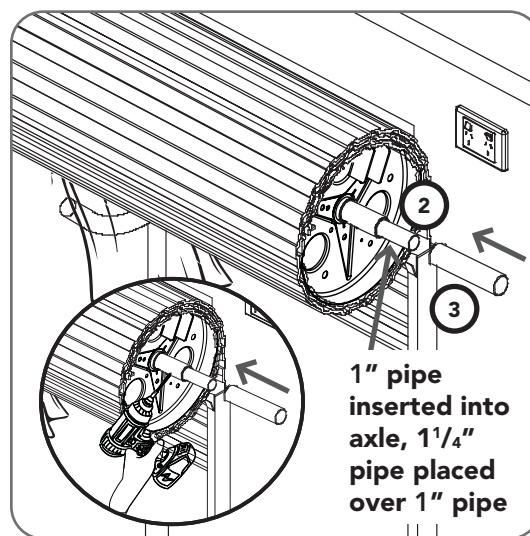


Fig. 3.2

#### 4. Mounting the bracket:

- Place the hanger bracket (1) next to the door guide and mount to the guide using 4 x hex head screws (5) (**Fig 4.1**).
- Raise the door off the door stand or suitable prop.
- Lift up and over the door hanger bracket (1) position the door onto the bracket.
- Fit the U-bolt (4) supplied with the extension kit and tighten with nuts (6).

#### 1 1/4" Axle ONLY:

- Drill a 3/16" pilot hole (next to the U bolt saddle) on an angle into the axle extension pipe.
- Fit tek screw to secure 1 1/4" pipe to 1" pipe.

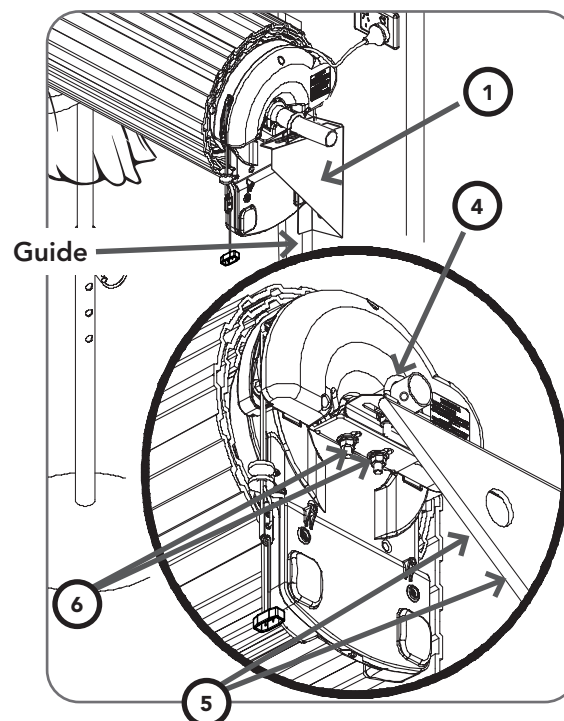


Fig. 4.1